

Particle Size, Zeta-Potential and Polydispersity Coefficient of SLN-CA

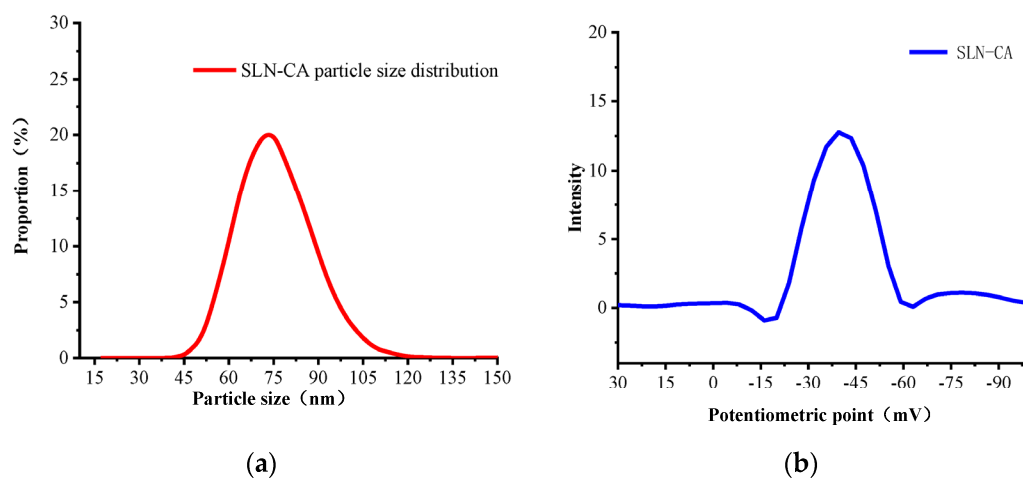


Figure S1. Results of particle size, zeta potential and polydispersity coefficient: (a) particle size and distribution; (b) zeta potential distribution.

SEM and TEM of SLN-CA

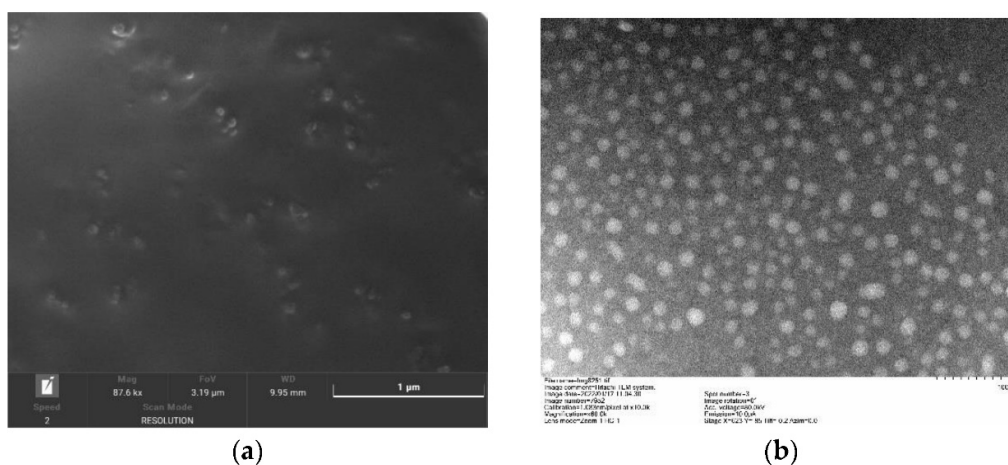


Figure S2. SLN-CA scanning electron microscope morphology (a), SLN-CA transmission electron microscope morphology (b).

Table S1 Sensory characteristics of strawberries on the first of storage at 25°C.

	Colour	Appearance	Scent	Shape	Overall acceptability
CA (16.6 μ L/mL)	9 \pm 0 a	8.5 \pm 0.82 b	5 \pm 1.2 d	8 \pm 1.22 b	5.25 \pm 0.7 c
CA (1.05 μ L/mL)	9 \pm 0 a	8.25 \pm 0.43 b	7.5 \pm 0.5 b	9 \pm 0 a	7 \pm 0.7 b
Control	9 \pm 0 a	9 \pm 0 a	9 \pm 0 a	9 \pm 0 a	9 \pm 0 a
SLN-CA (16.6 μ L/mL)	8 \pm 0.7 b	9 \pm 0 a	6.5 \pm 1.11 c	9 \pm 0 a	9 \pm 0 a
SLN-CA (8.3 μ L/mL)	8 \pm 0.71 b	9 \pm 0 a	7.75 \pm 0.82 b	9 \pm 0 a	9 \pm 0 a
SLN-CA (4.16 μ L/mL)	9 \pm 0 a	9 \pm 0 a	9 \pm 0 a	9 \pm 0 a	9 \pm 0 a
SLN-CA (2.08 μ L/mL)	9 \pm 0 a	9 \pm 0 a	9 \pm 0 a	9 \pm 0 a	9 \pm 0 a
SLN-CA (1.05 μ L/mL)	9 \pm 0 a	9 \pm 0 a	9 \pm 0 a	9 \pm 0 a	9 \pm 0 a

Table S2. Sensory characteristics of strawberries on seventh day (b) of storage at 25°C.

	Colour	Appearance	Scent	Shape	Overall acceptability
control	4.14 \pm 1.2 b	4.57 \pm 1.4 b	3.57 \pm 0.5 c	5 \pm 0.7 c	5.43 \pm 1 c
SLN-CA (16.6 μ L/mL)	2.43 \pm 0.5 a	3.42 \pm 0.5 a	1.14 \pm 0 a	2.57 \pm 0.5 a	1.42 \pm 0.8 a
SLN-CA (8.3 μ L/mL)	4.14 \pm 0.82 b	7.28 \pm 0.75 c	2.41 \pm 0.69 b	4 \pm 0.82 b	3.71 \pm 0.47 b
SLN-CA (4.16 μ L/mL)	6.14 \pm 0.47 c	7.28 \pm 0.69 c	7.14 \pm 0.58 e	6.85 \pm 0.47 d	7.71 \pm 0.47 d
SLN-CA (2.08 μ L/mL)	7.28 \pm 0.45 d	8 \pm 0.53 c	7.57 \pm 0.49 e	8 \pm 0.53 e	7.42 \pm 0.73 d
SLN-CA (1.04 μ L/mL)	5.85 \pm 0.64 c	4.57 \pm 0.73 b	6 \pm 0.76 d	3 \pm 0.76 a	4.71 \pm 0.7 c