

Figure S5 - Alignment visualisation of fifteen Scilloideae chloroplast genomes using *Hyacinthus orientalis* L. ‘Gipsy Queen’ as reference

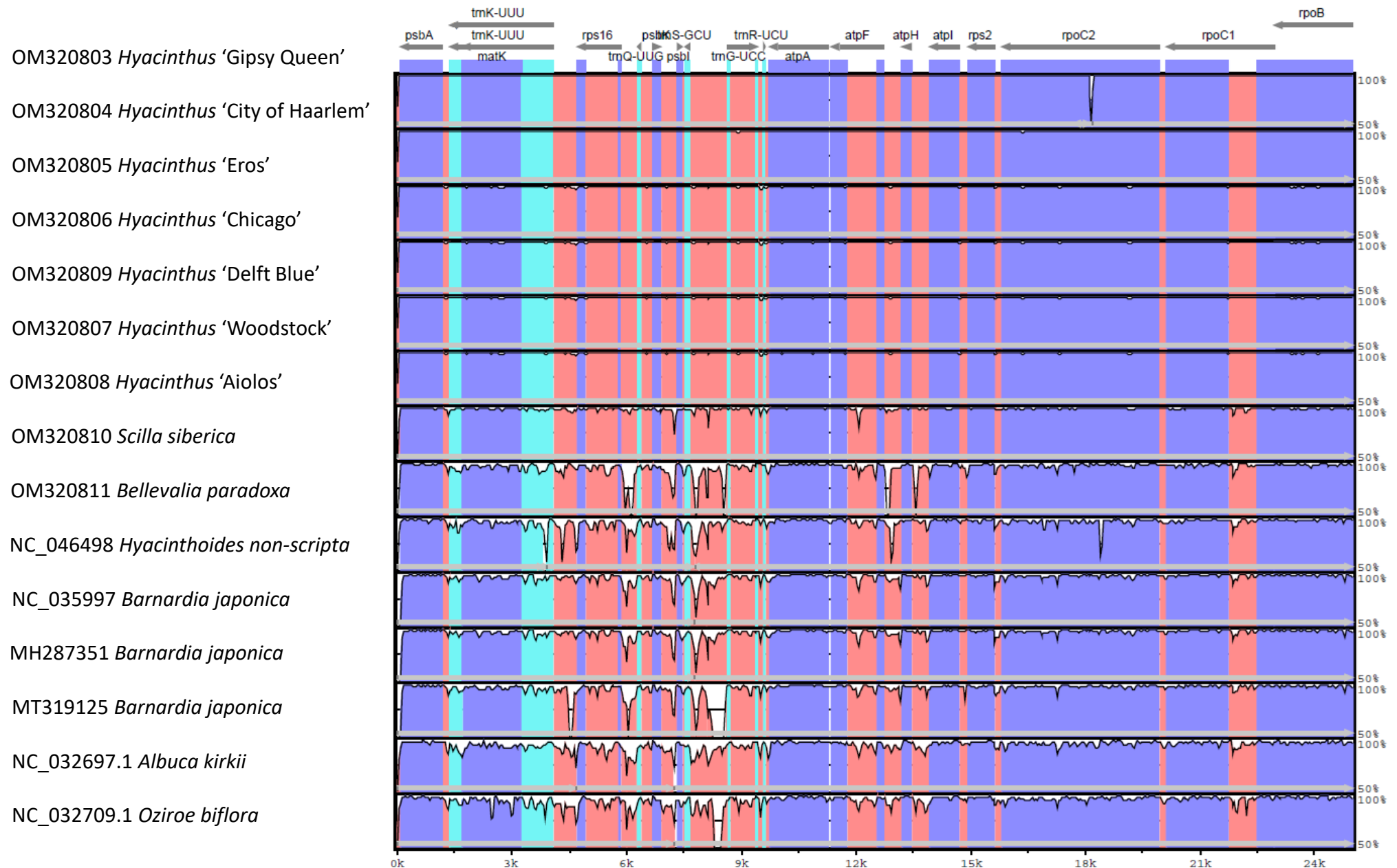


Figure S5 - Alignment visualisation of fifteen Scilloideae chloroplast genomes using *Hyacinthus orientalis* L. ‘Gipsy Queen’ as reference

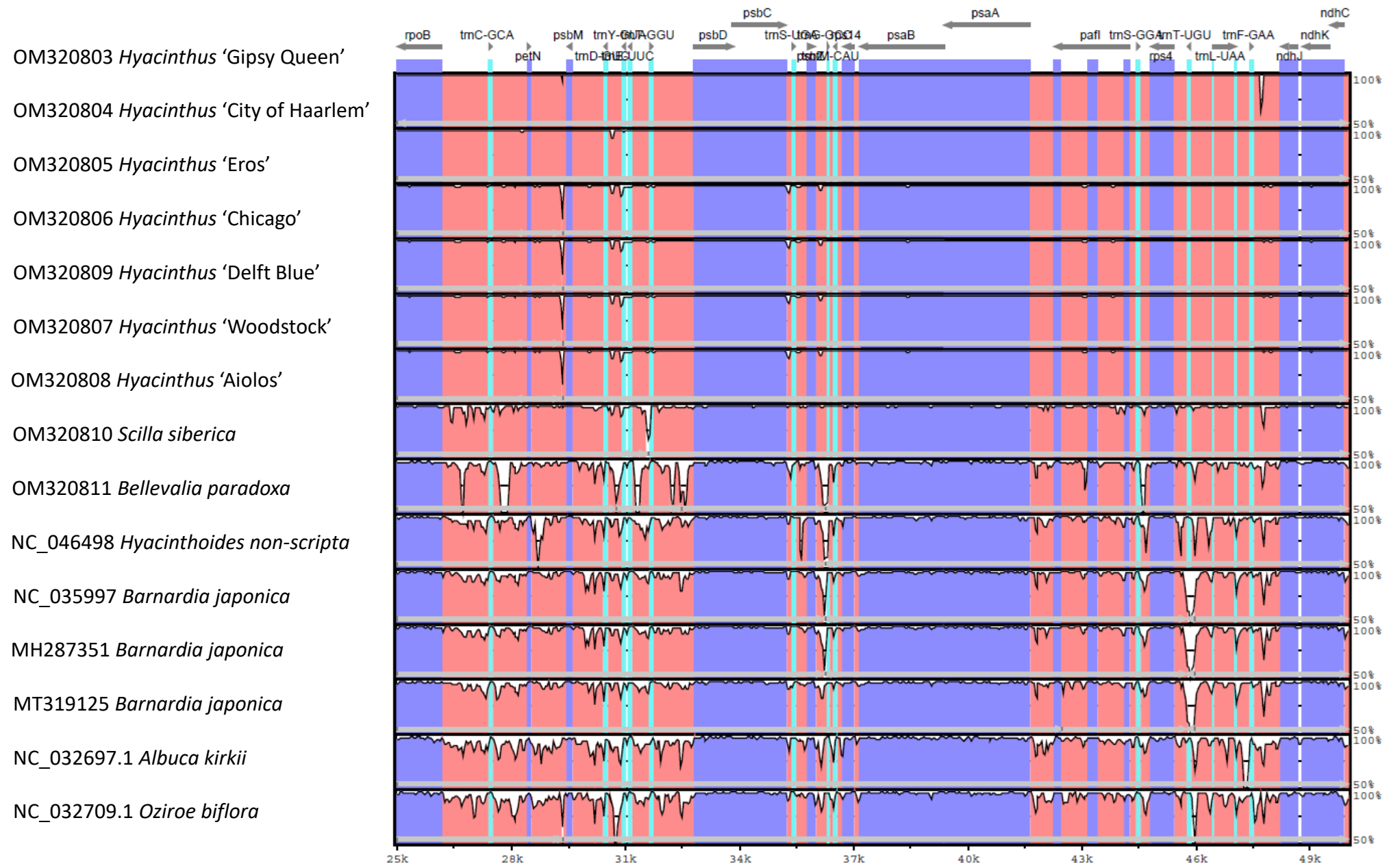


Figure S5 - Alignment visualisation of fifteen Scilloideae chloroplast genomes using *Hyacinthus orientalis* L. ‘Gipsy Queen’ as reference

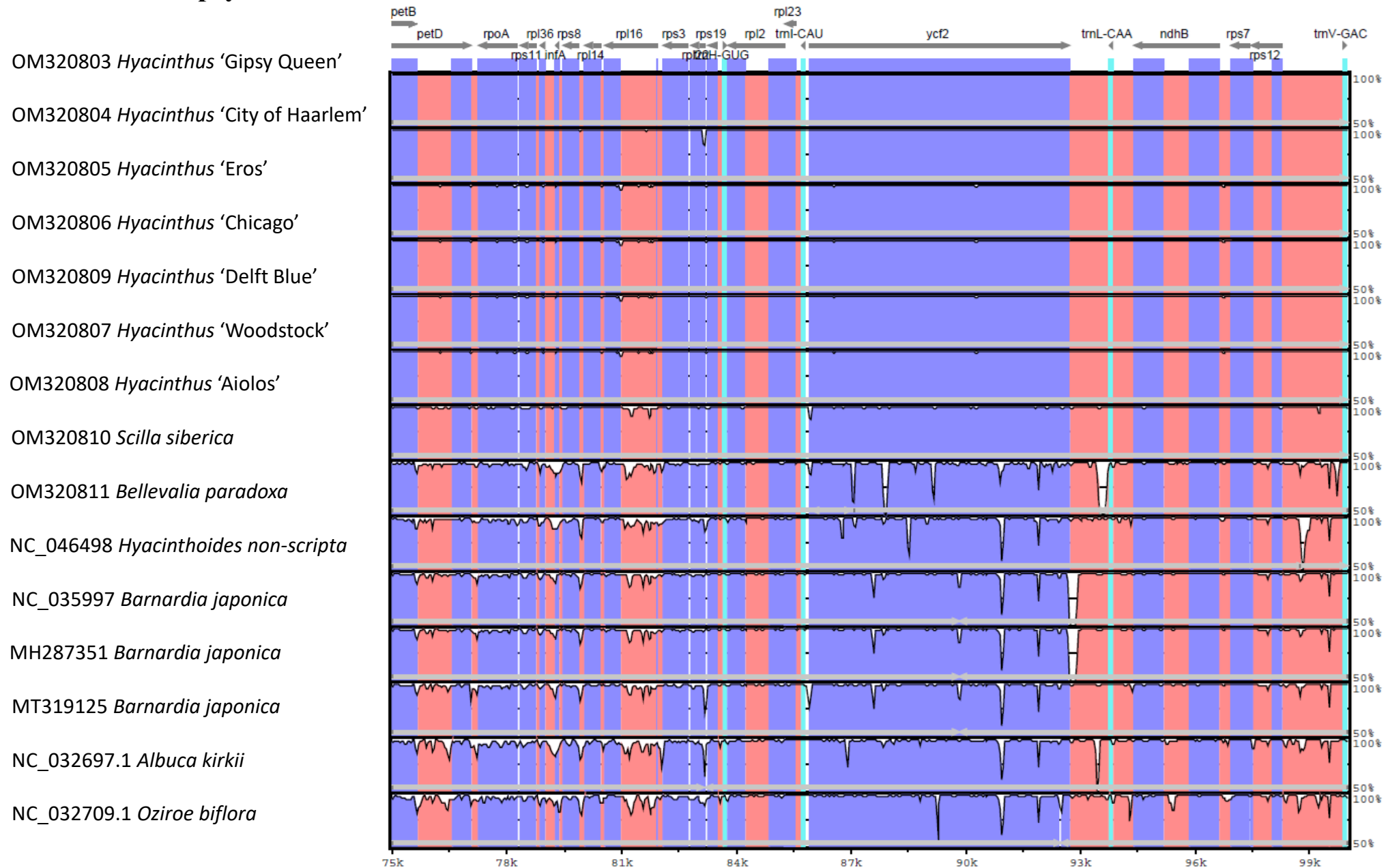


Figure S5 - Alignment visualisation of fifteen Scilloideae chloroplast genomes using *Hyacinthus orientalis* L. ‘Gipsy Queen’ as reference

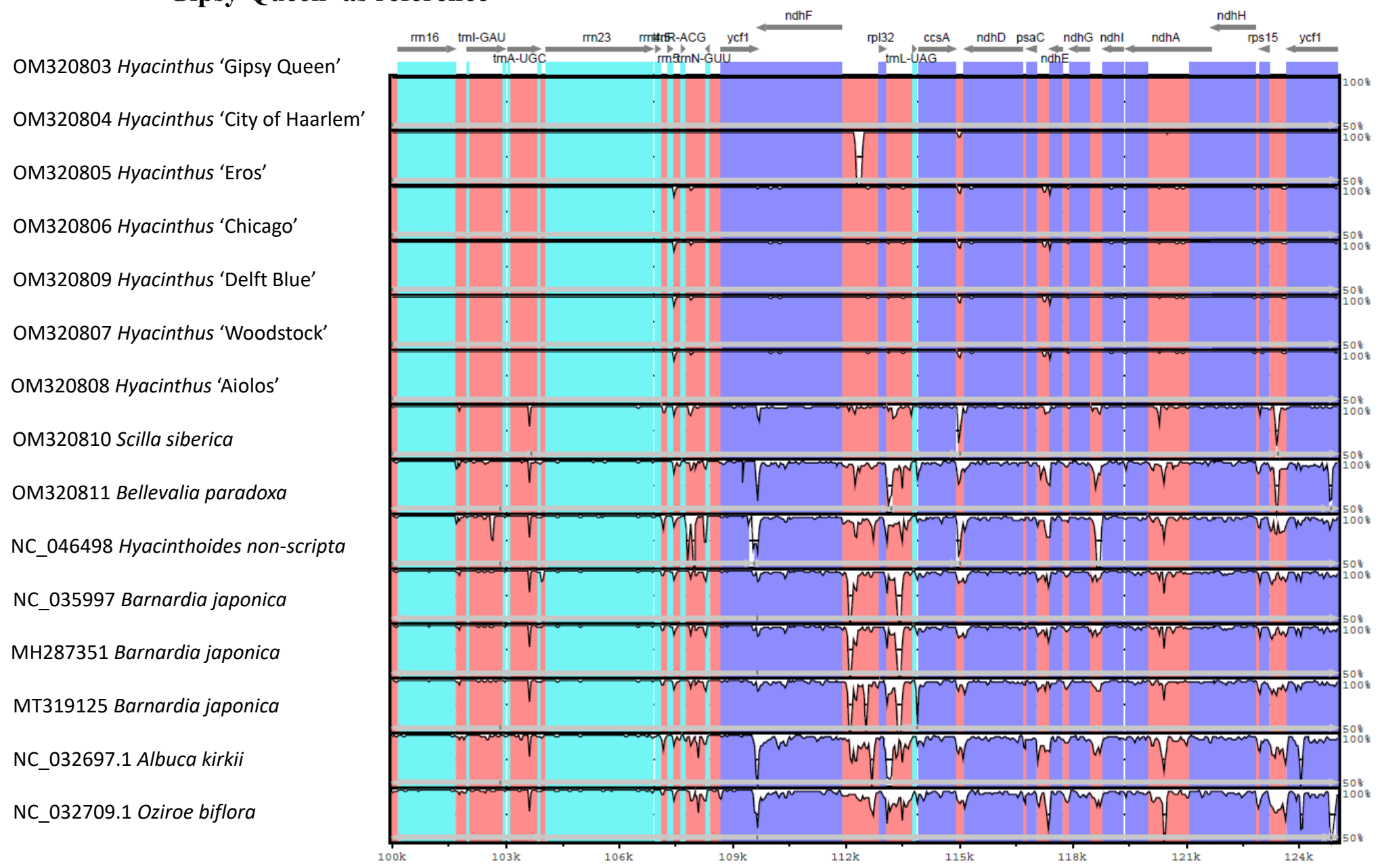


Figure S5 - Alignment visualisation of fifteen Scilloideae chloroplast genomes using *Hyacinthus orientalis* L. ‘Gipsy Queen’ as reference

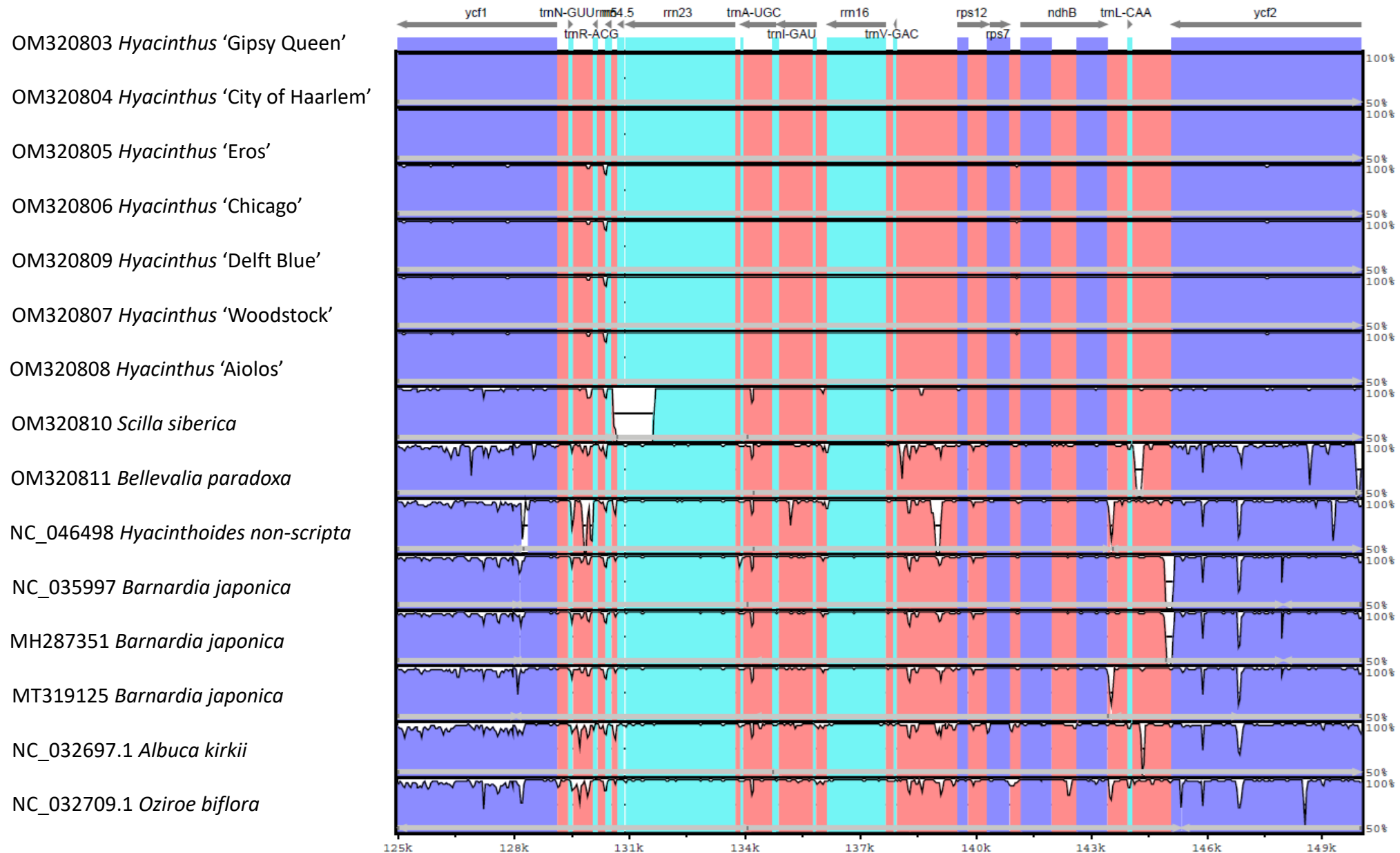


Figure S5 - Alignment visualisation of fifteen Scilloideae chloroplast genomes using *Hyacinthus orientalis* L. ‘Gipsy Queen’ as reference

