

Supplementary Materials: Seed Micromorphology, *In Vitro* Germination, and Early-Stage Seedling Morphological Traits of *Cattleya purpurata* (Lindl. & Paxton) Van den Berg

Miriam Bazzicalupo ^{1,*}, Jacopo Calevo ^{2,*}, Martino Adamo ^{2,3}, Annalisa Giovannini ⁴, Andrea Copetta ⁴ and Laura Cornara ¹

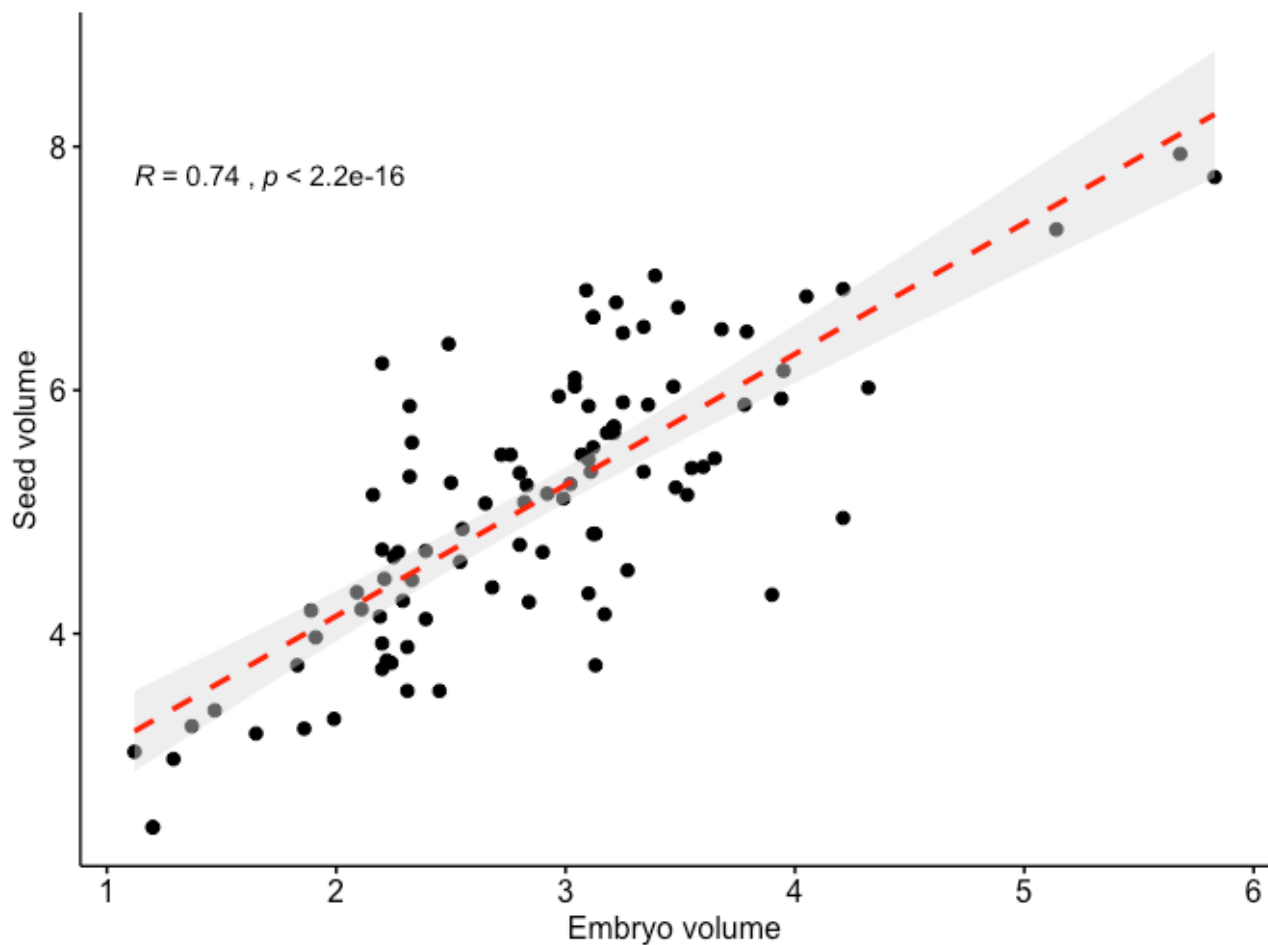


Figure S1. Correlation between the volume of the embryo and the seed analyzed by means of the `cor.test()` function using the Spearman's rank correlation coefficient ρ .

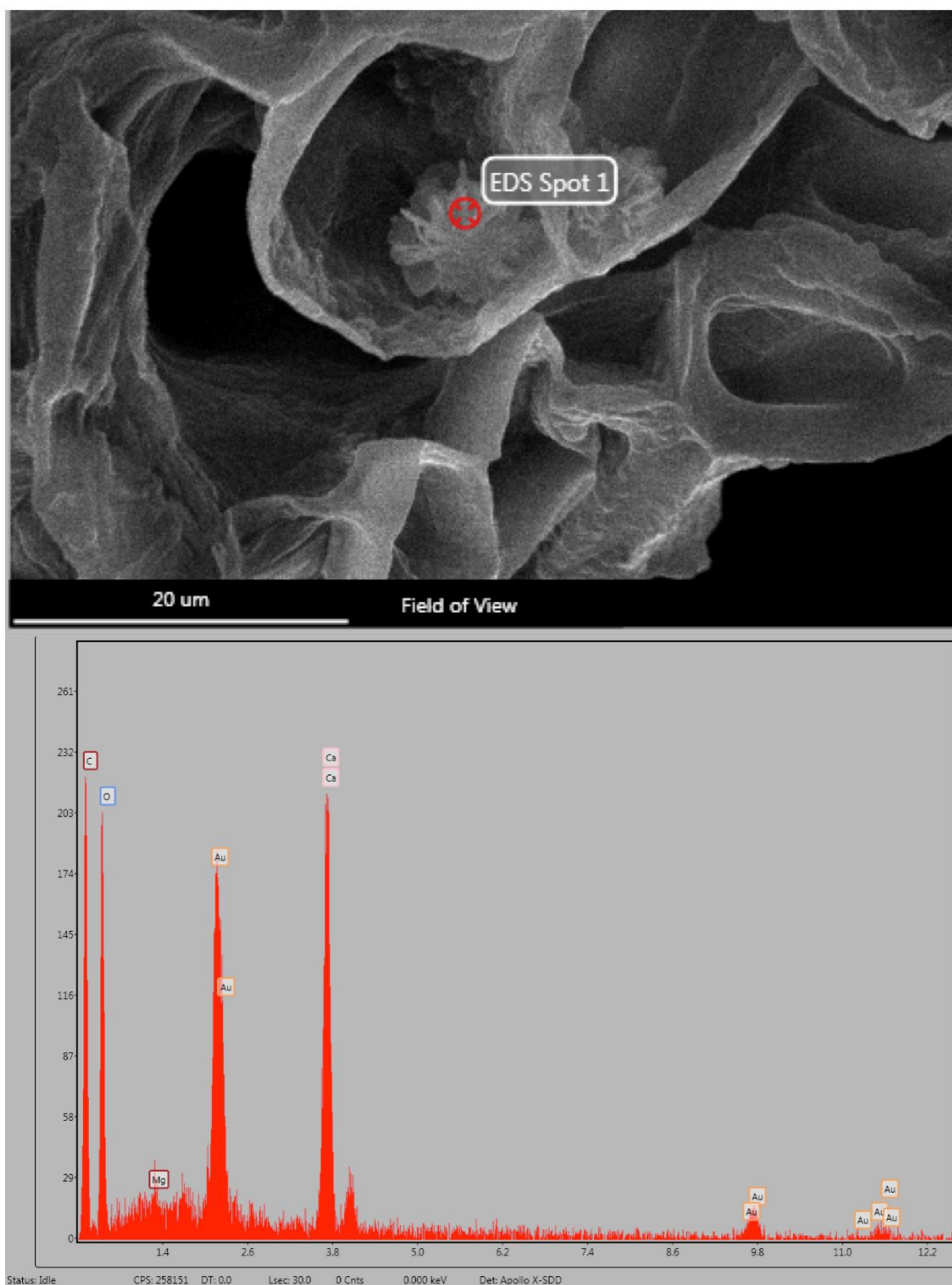


Figure S2. Main elements present in crystals determined by SEM-EDS spectrum. The analysis showed a chemical composition typically obtained for calcium oxalate, with carbon (C), oxygen (O) and calcium (Ca) peaks.