

Supplementary Information



Figure S1. Ripe fruit of 'Ninomiyahakuri'(left) and 'Eli No.2'(right) pears.

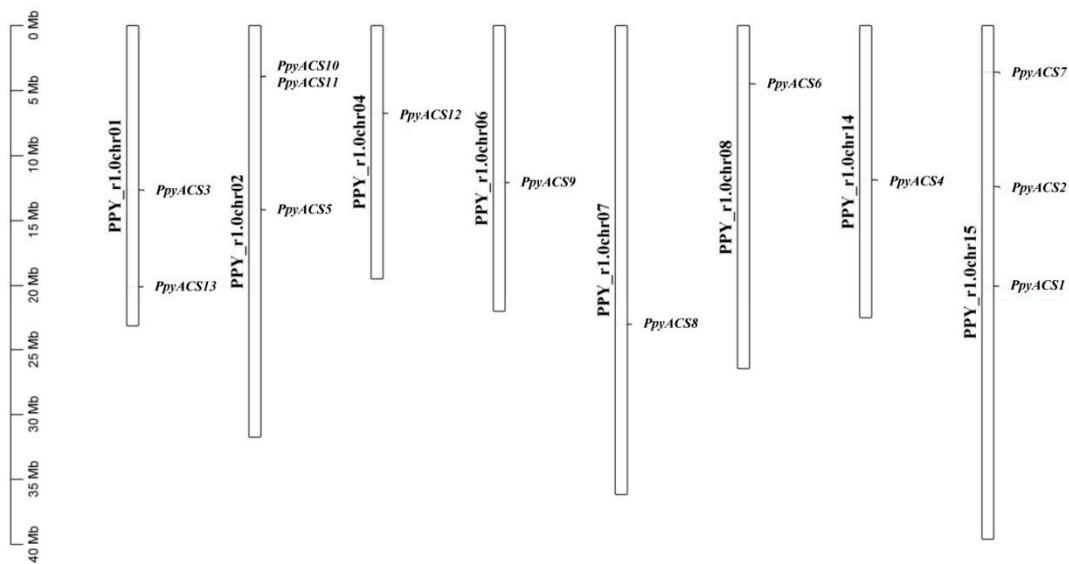


Figure S2. Distribution of ACS genes on the *Pyrus pyrifolia* chromosomes.

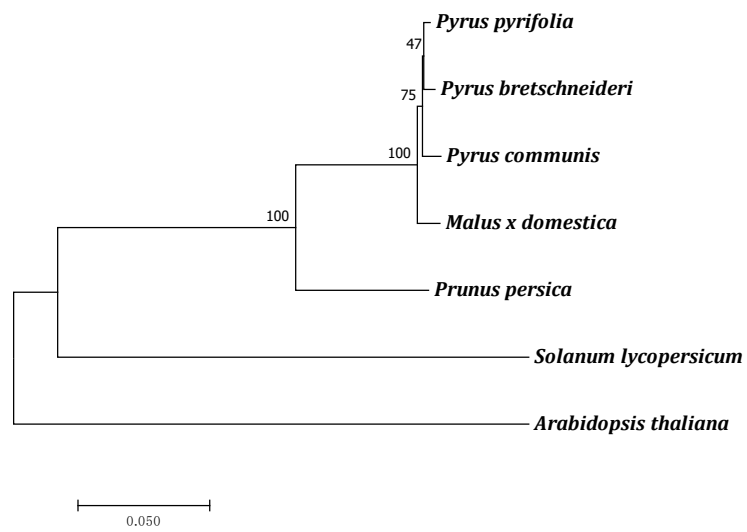


Figure S3. Species tree of five Rosaceae species and two reference species. The orthologs gene of different species were identified by using OrthoVenn2 and then aligned by using Clustal W (Table S5). The tree was constructed by using MEGA 7.0 software following the NJ (neighbor-joining) statistical method and bootstrap analysis was conducted with 1000 replicates .