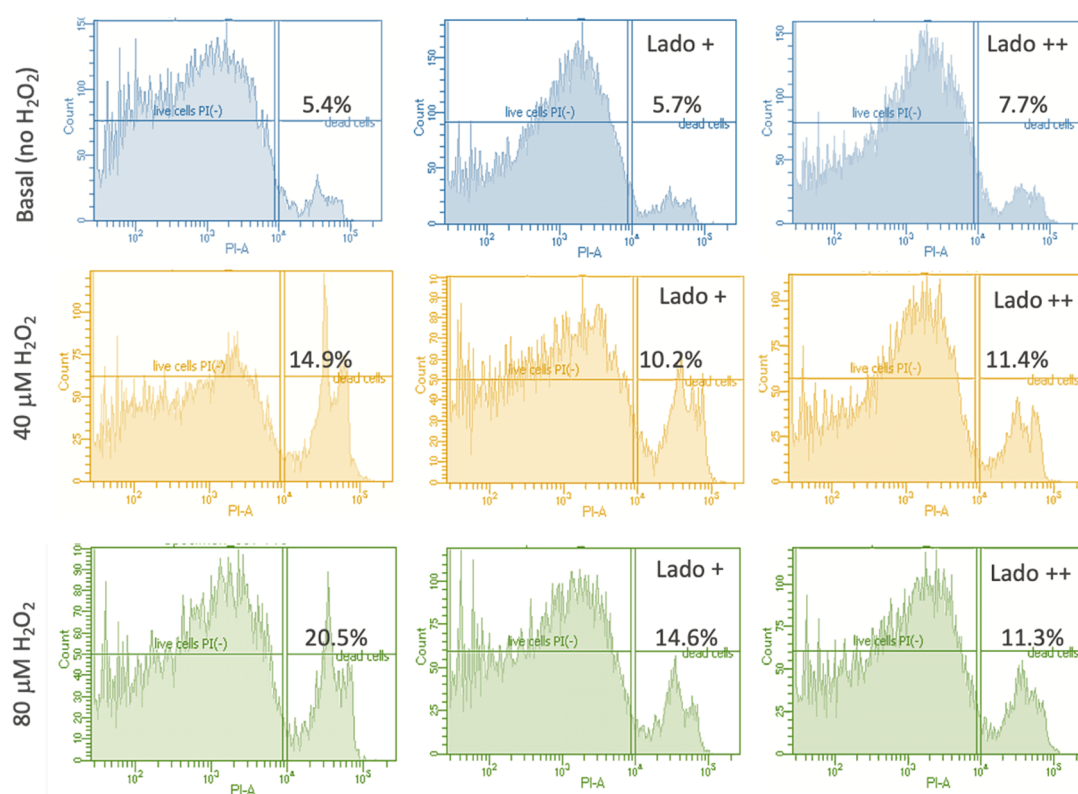


Supplementary Figure S1



**Figure S1.** Flow cytometry analysis in naïve (untreated) and cells under oxidative stress condition in response to treatment with ladostigil (24 h). In each condition, 50 k cells were tested and split to live and death cell in basal condition (blue), following 40  $\mu M$  and 80  $\mu M$   $H_2O_2$  (yellow and green panels, respectively), and by the addition of ladostigil at 5.4  $\mu M$  (middle), 54  $\mu M$  (right). The data is of a representative experiment performed with 9 different biological samples using predetermined gates on the flow cytometry (shown by the vertical double lines in each panel). The high fluorescence of PI (x-axis, above the vertical line) indicates the fraction of dead cells (in % from total).