

Figure S1. Cytotoxicity effect of thermoresponsive gels containing HLRE in normal human dermal fibroblasts (NHDF) as determined by AlamarBlue assay at 24 h of incubation, n=3. Footnote: Blank gel indicates unloaded thermoresponsive gels made of PF127 and PEG (F5); HLRE indicates hot extract of *L. rhinocerotis*

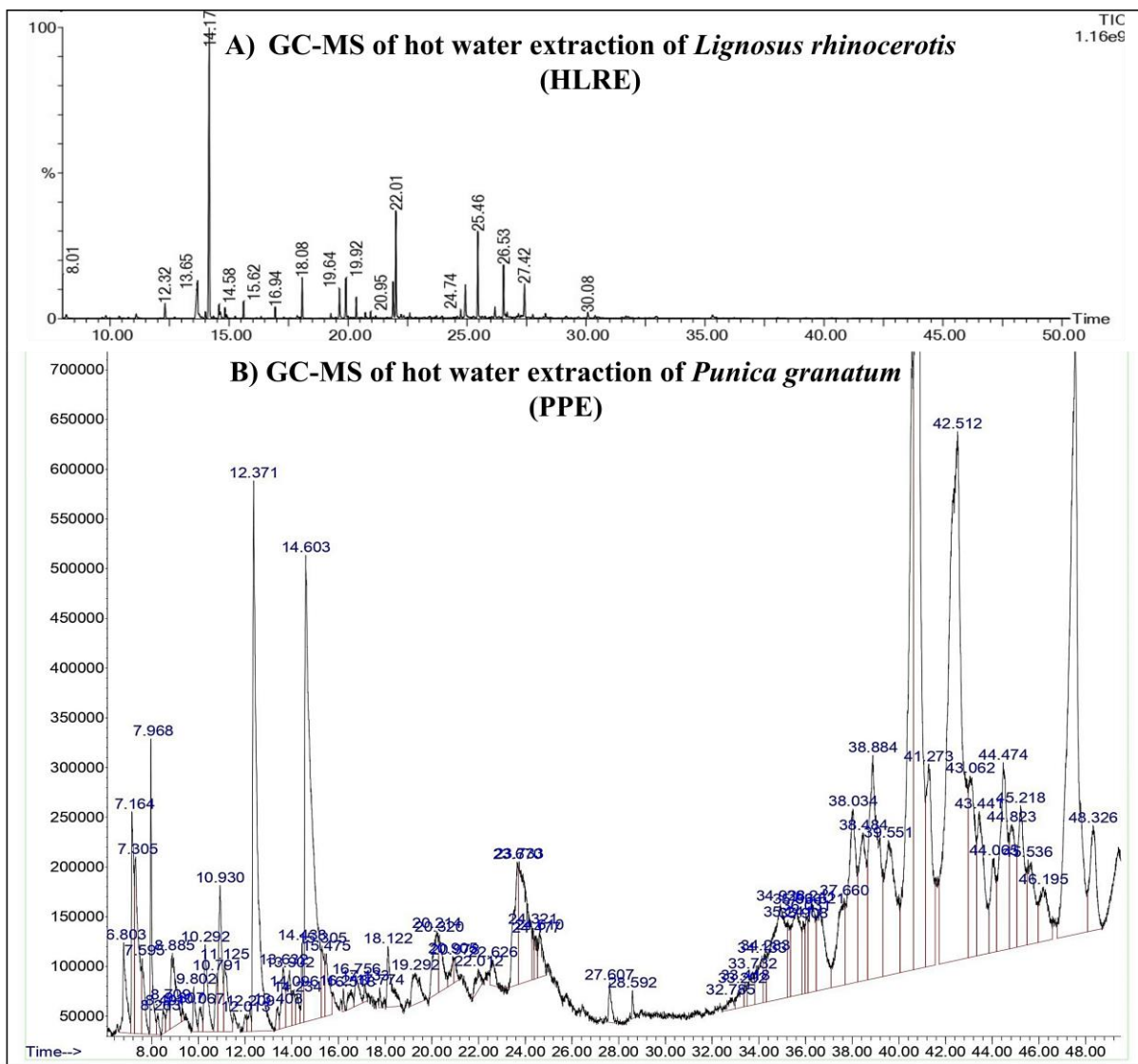


Figure S2. GC-MS analysis of HLRE (A) and PPE (B) .