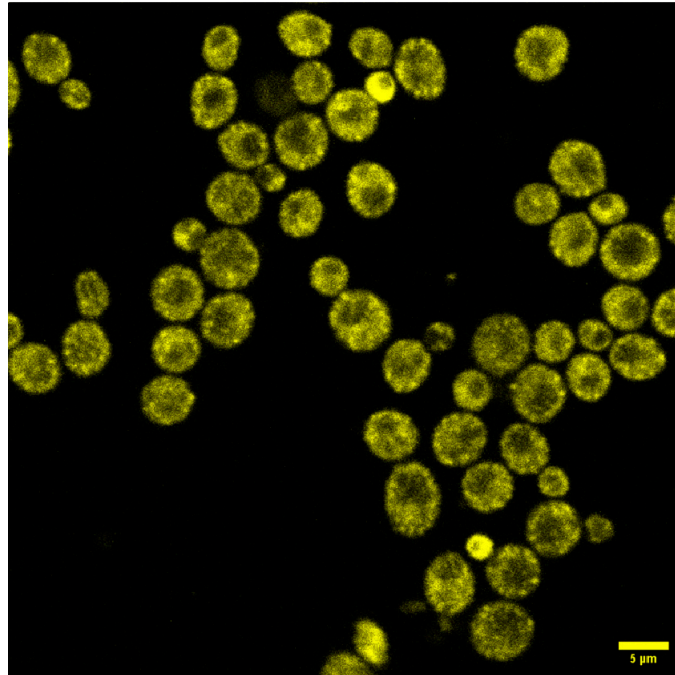


Supplementary Figure S1A.

Saccharomyces cerevisiae Azteca



Saccharomyces cerevisiae W303

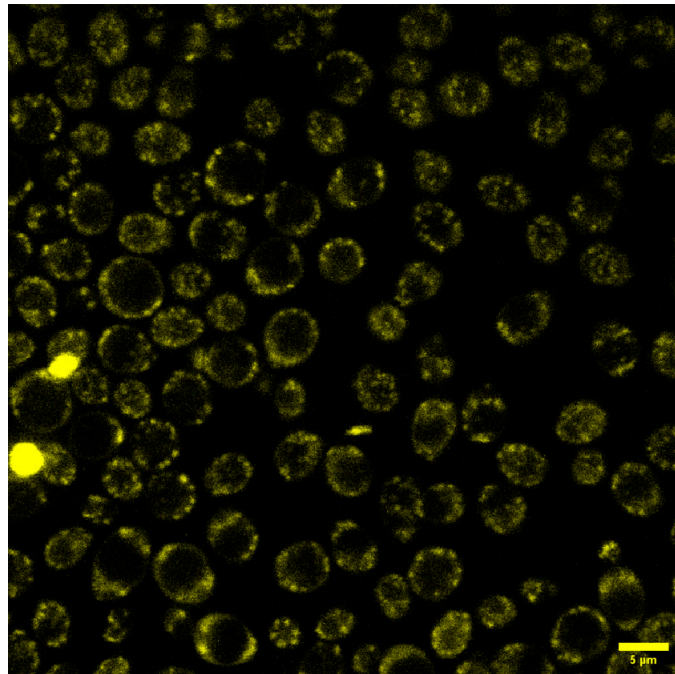
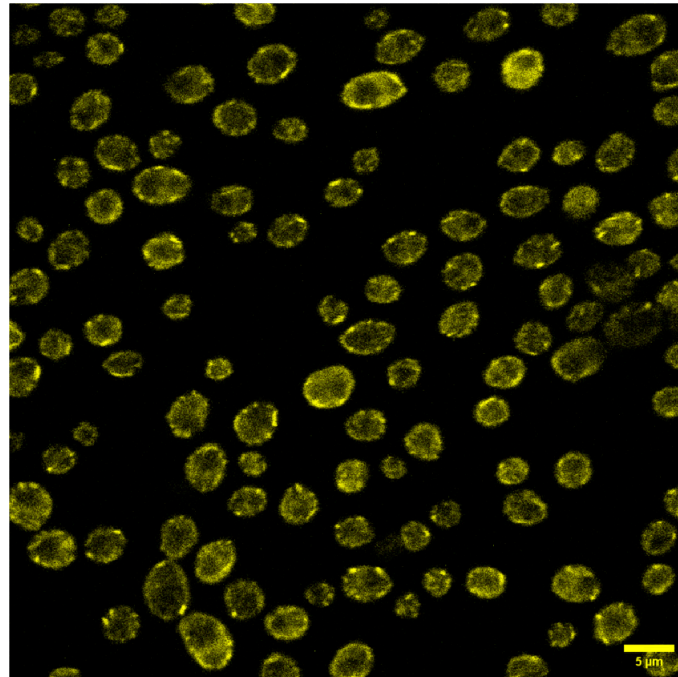


Figure S1. A. Control images enlargement of the different strains of Figure 5.

Supplementary Figure S1B.

Candida albicans



Debaryomyces hansenii

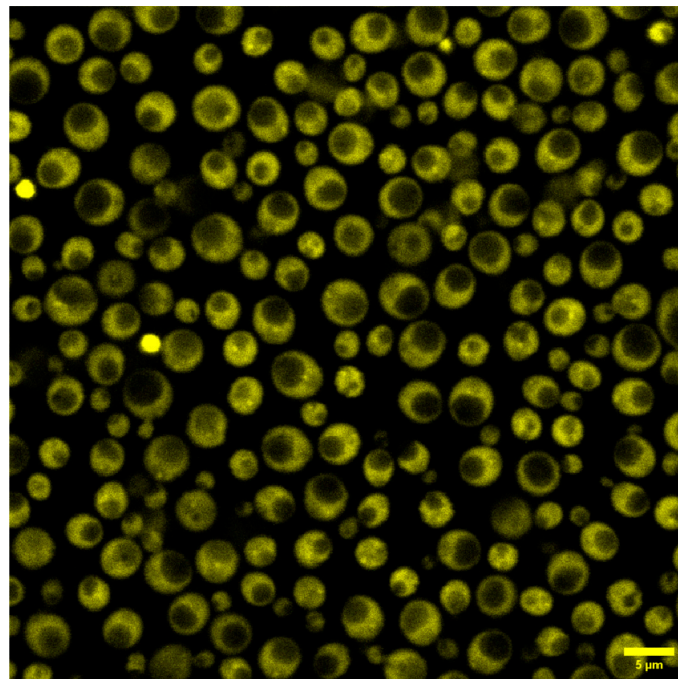
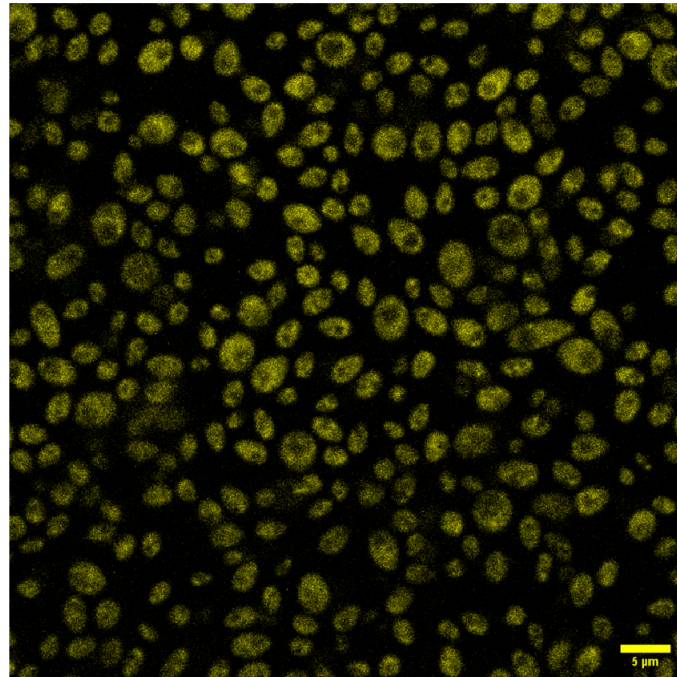


Figure S1. B. Control images enlargement of the different strains of Figure 5.

Supplementary Figure S1C.

Meyerozyma guilliermondii



Rhodotorula mucilaginosa

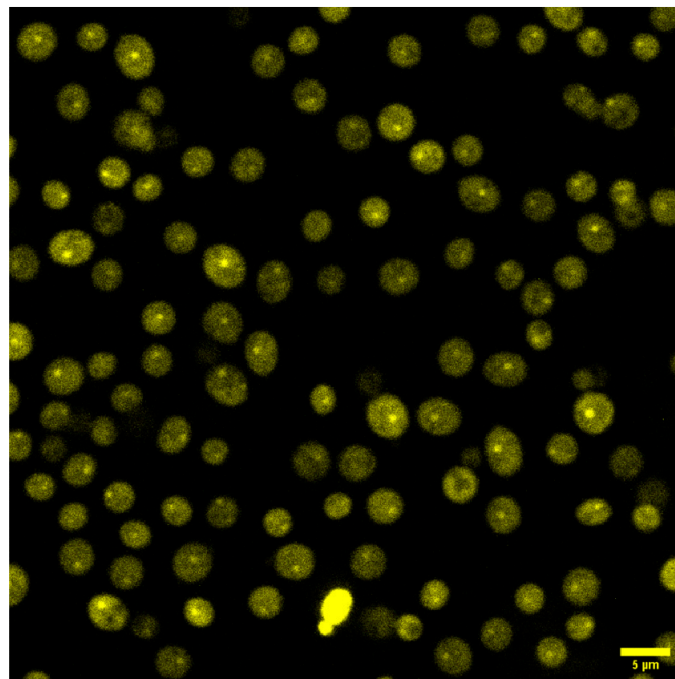


Figure S1. C. Control images enlargement of the different strains of Figure 5.

Supplementary Figure S2.

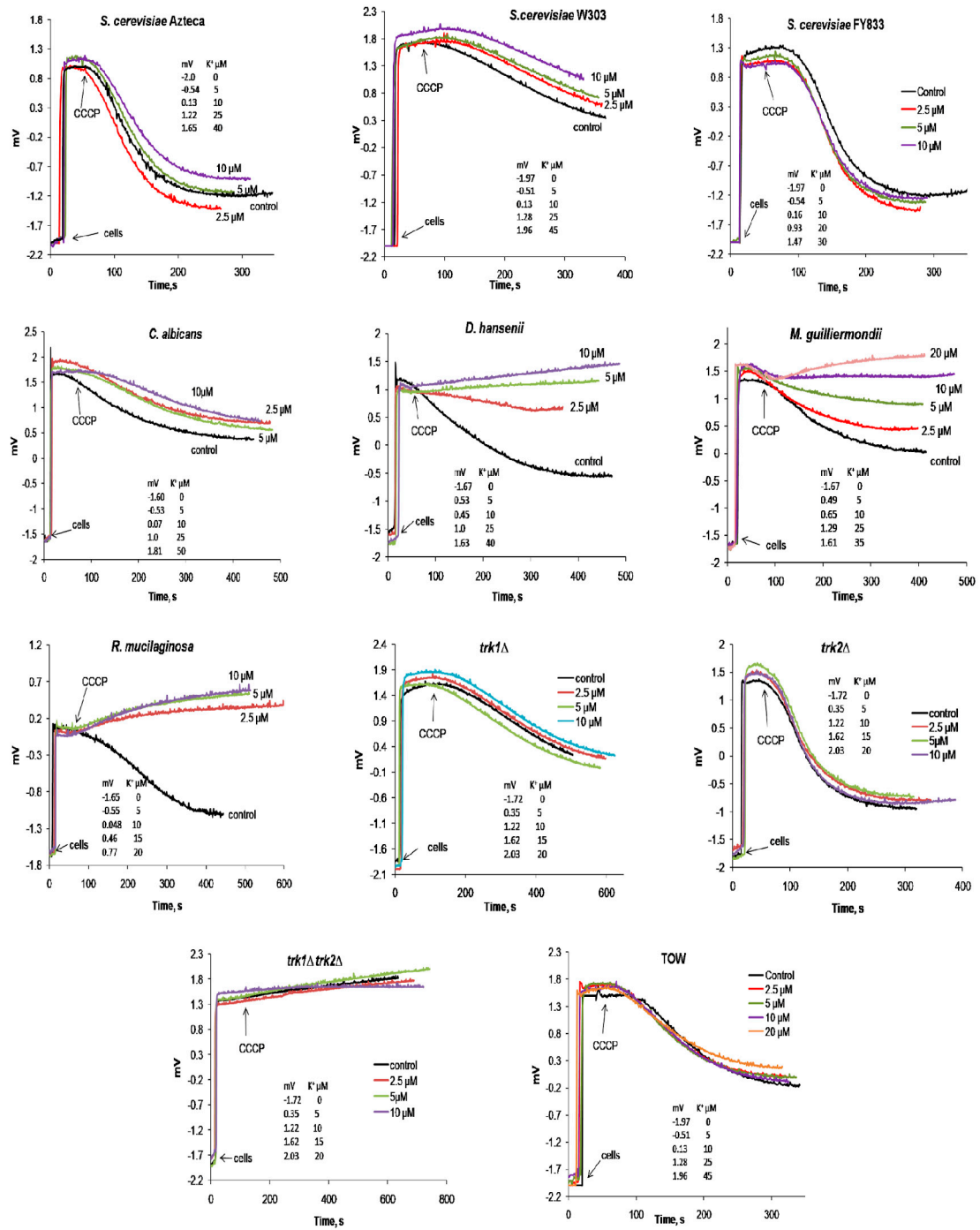


Figure S2. Effects of different CCCP concentrations on the K⁺ uptake. The medium used was 2 mM MES-TEA buffer, pH 6.0, 20 mM glucose. Tracings were started by the addition of 100 mg of cells (w. w.). Where indicated, variable concentrations of CCCP were added. A standard curve for the tracings was performed by the successive addition of 0 to 50 μM (specified in the insert).

Supplementary Figure S3

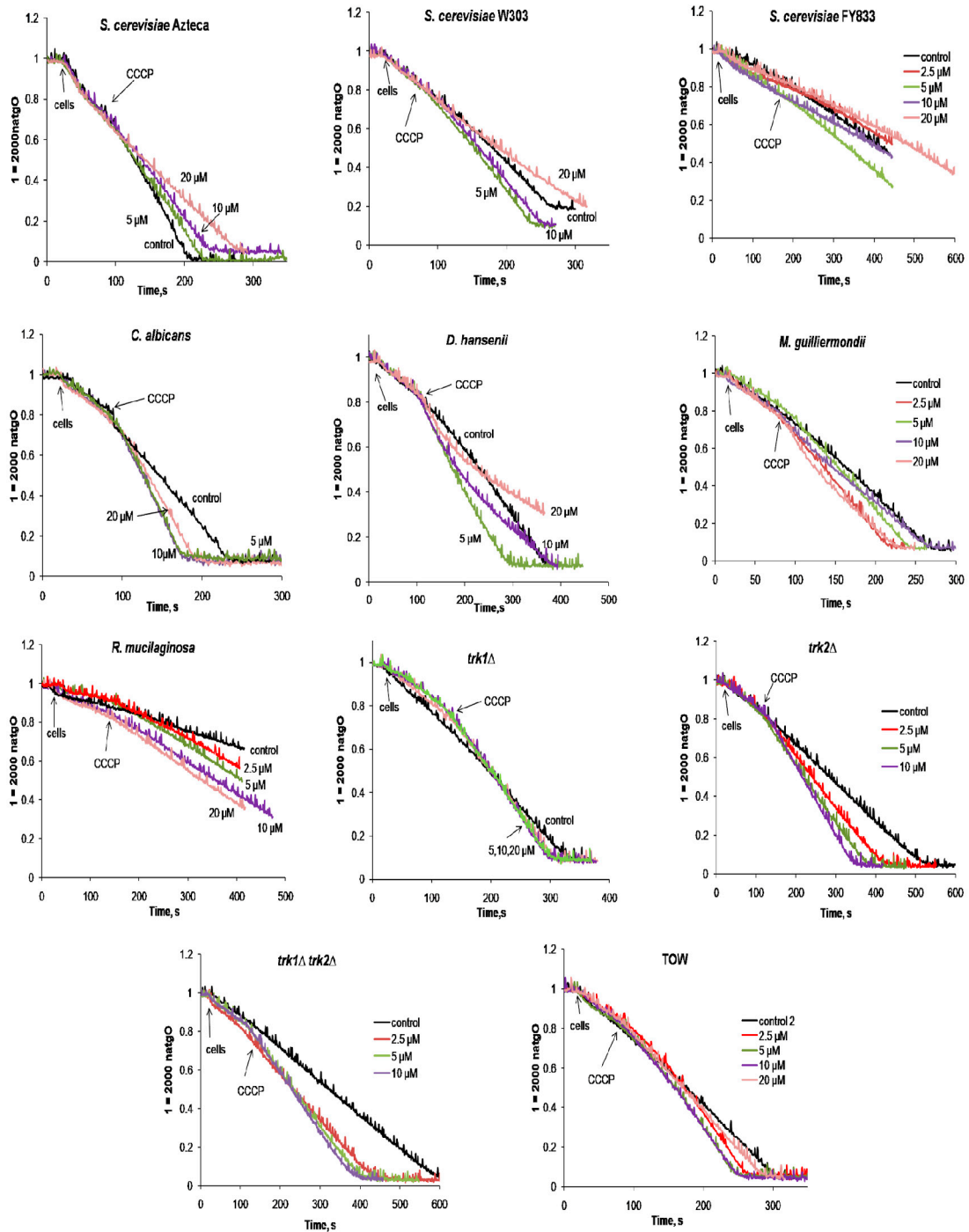


Figure S3. Effects of different CCCP concentrations on oxygen consumption. The medium used was 10 mM MES-TEA buffer, pH 6.0, 20 mM glucose. Tracings were started by the addition of 50 mg of cells (w. w.). Where indicated, variable concentrations of CCCP were added.