

Supplementary Supplementary

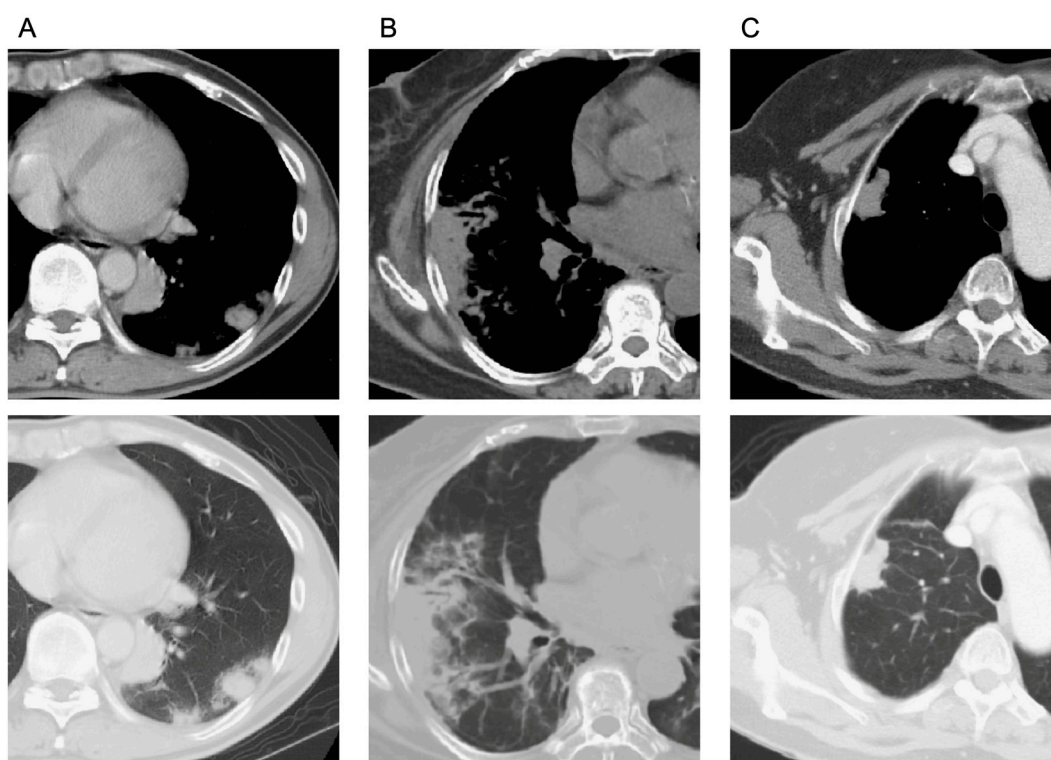


Figure S1. Common computed tomography findings of pulmonary cryptococcosis: multiple nodules/masses with or without cavitation (A), consolidation (B), and solitary nodule/mass with or without cavitation (C).

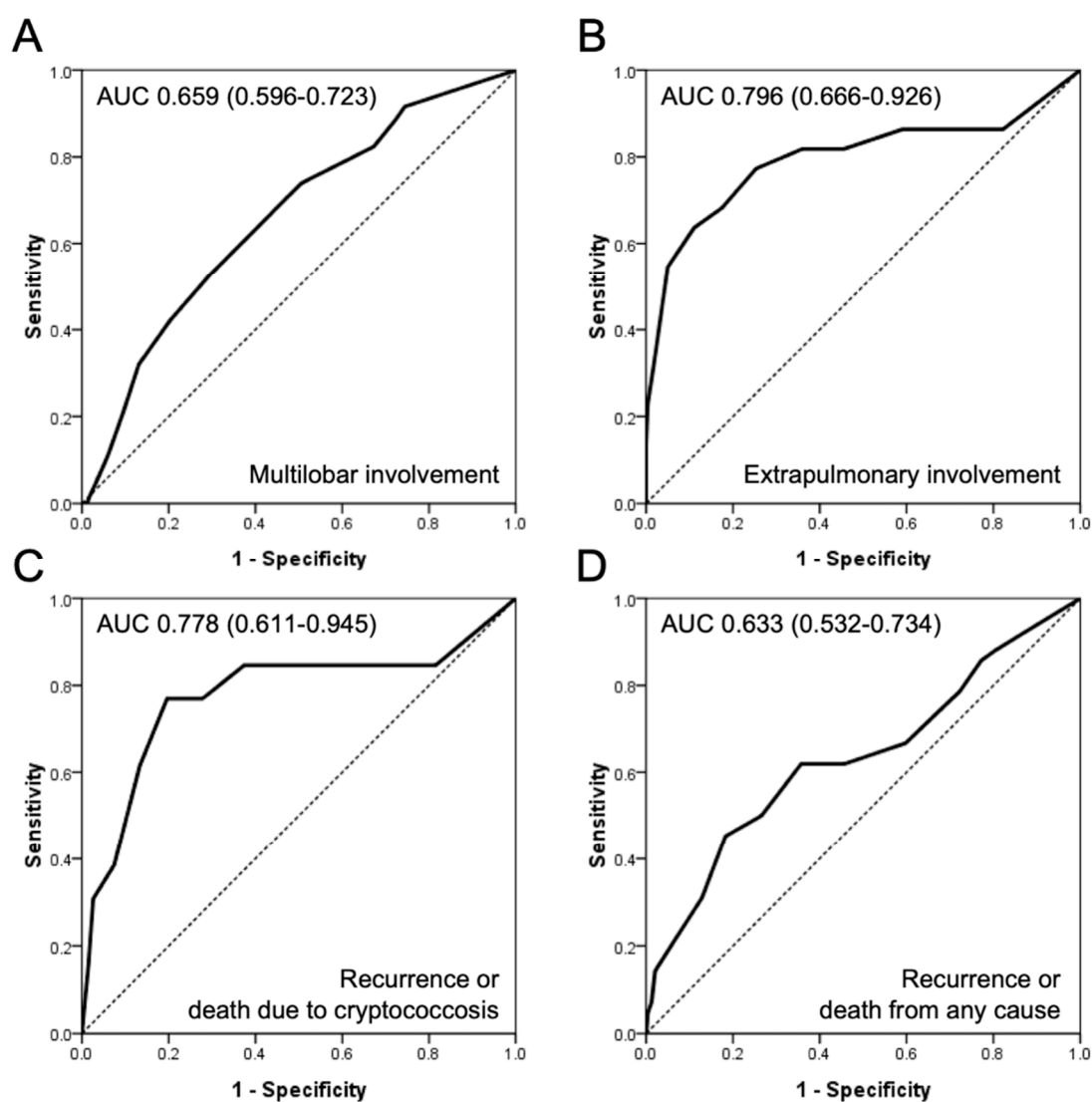


Figure S2. Receiver-operating characteristic (ROC) curve for evaluating Latex agglutination test of blood in predicting the extent of disease and outcome.