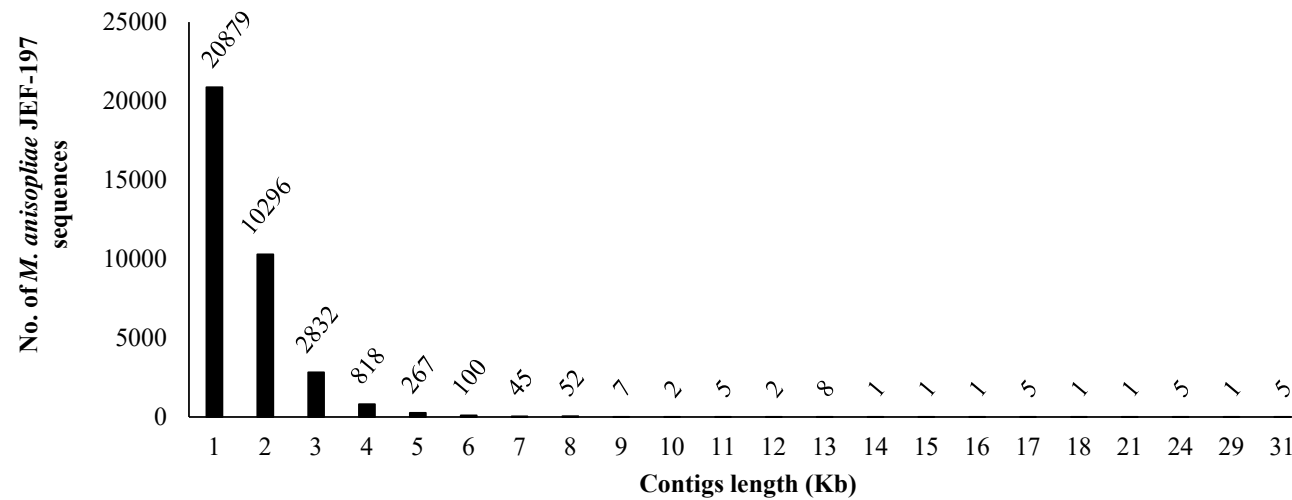
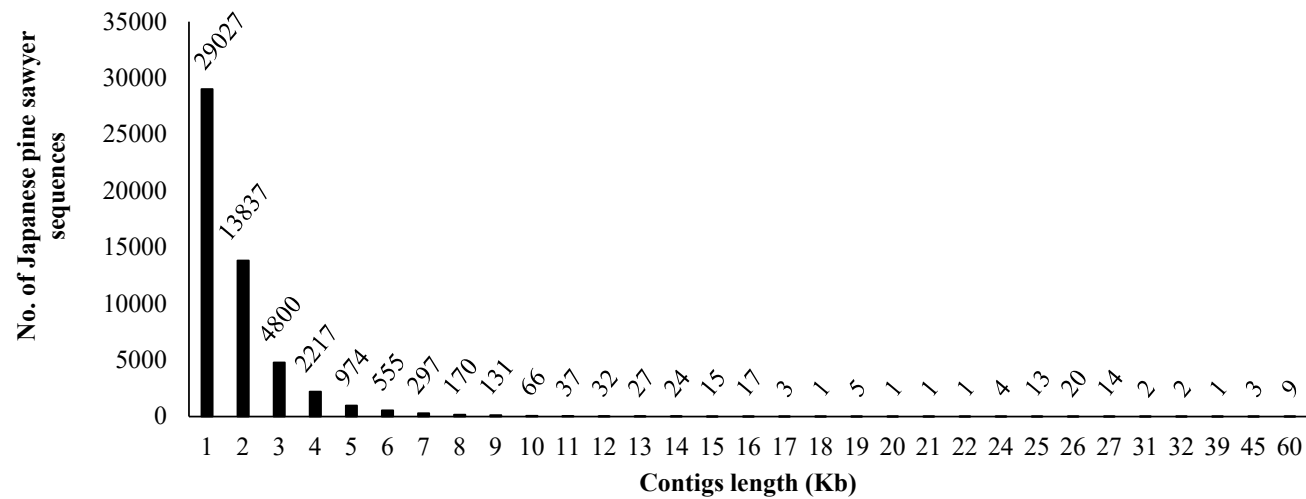


(a) *Metarhizium anisopliae* JEF-197



(b) Japanese pine sawyer beetle



**Supplementary Figure S1. Distribution of the assembled Japanese pine sawyer beetle transcripts according to length of contig** The number of contigs was counted between the corresponding 1 kb size criteria. (a), The contigs of *Metarhizium anisopliae* JEF-197; (b), The contigs of JPS beetle