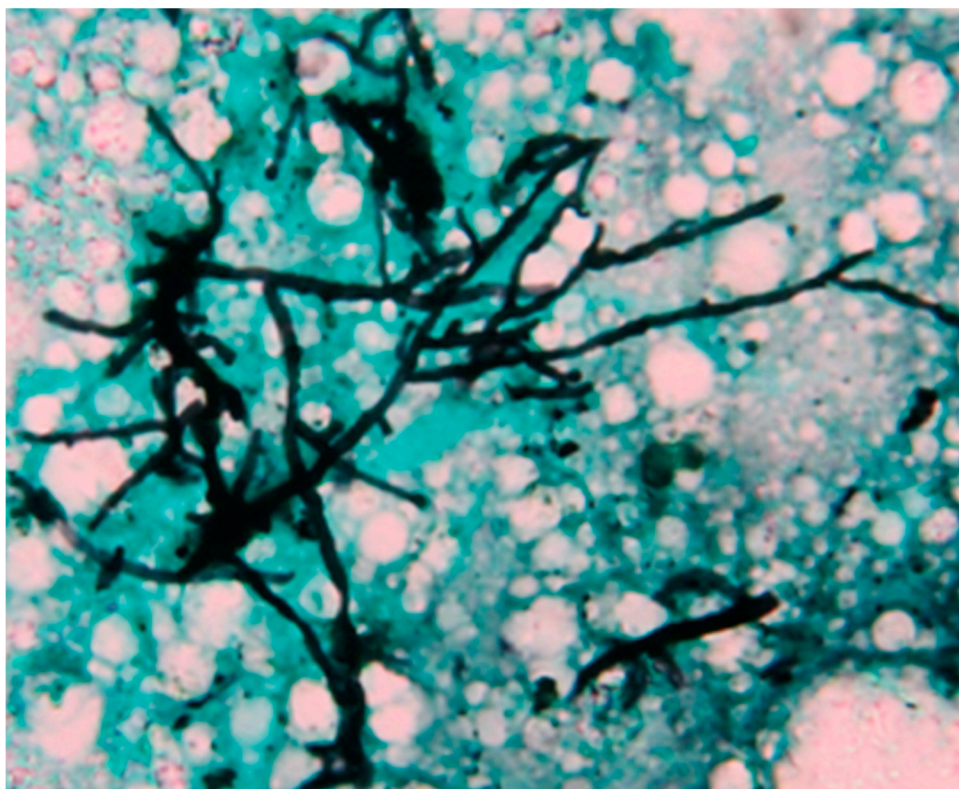


**Table S1.** Classification of the histopathological lesions observed in infected and treated *G.mellonella* larvae.

Stages	Description
Stage 1: Minimal lesions	Low invasion, rare and small foci containing mostly conidia Germinated conidia and hyphae
Stage 2: Mild to moderate lesions	2-a Not extensive 2-b More extensive
Stage 3: Marked lesions	Extensive lesions with invasion and presence of numerous intralesional hyphae



**Figure S1.** Direct examination of a larva infected with  $10^7$  cfu/ml of HEGP4017 *Aspergillus fumigatus* isolate. Gomori methenamine silver stain showing proliferating hyphae.