

Figure S1. The OTU accumulation curves for each sample, plotted using the function *rarecurve* from the R package “vegan”.

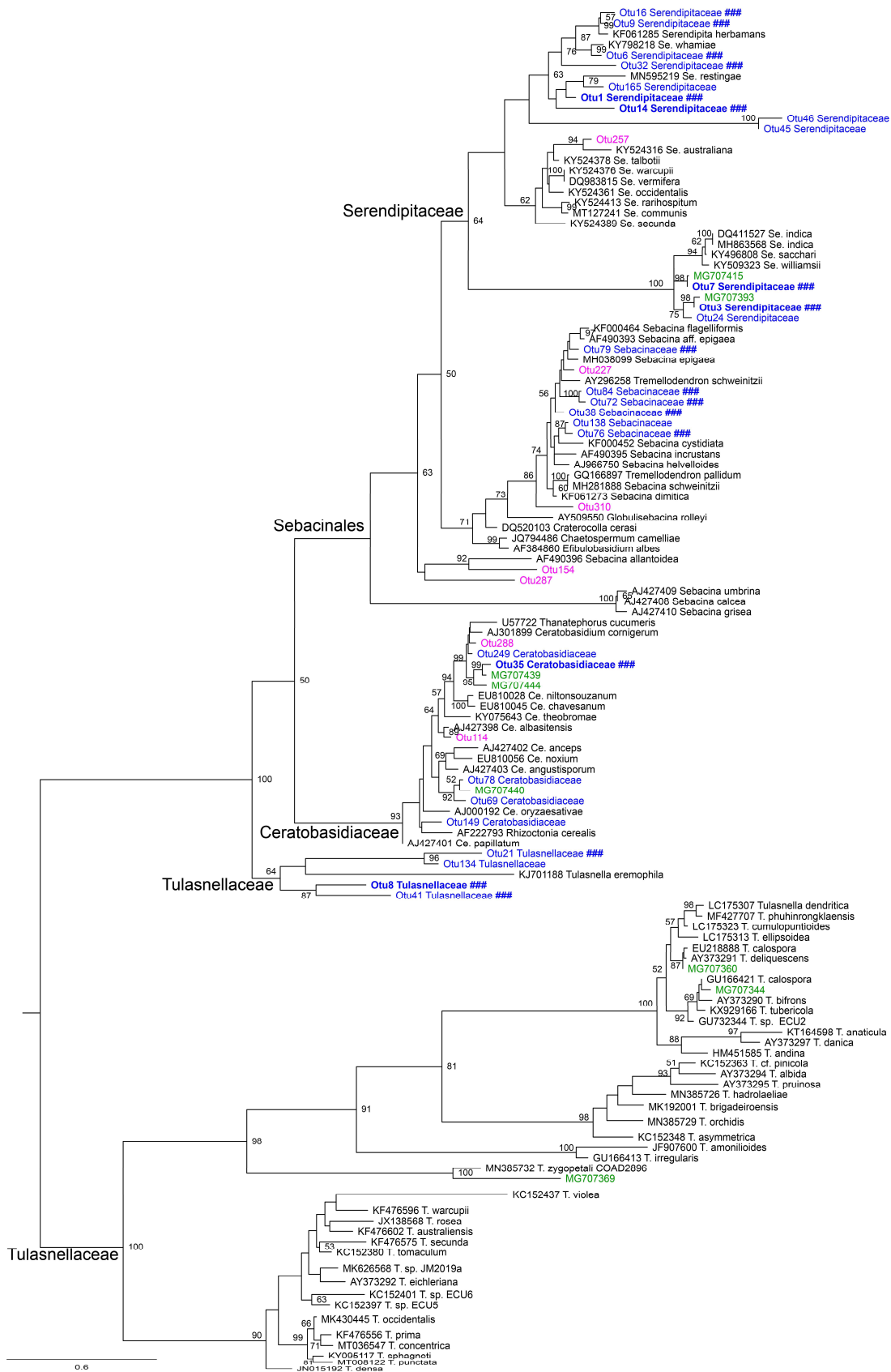


Figure S2. The phylogenetic tree of rhizoctonia fungi inferred from ITS2 sequences. Bootstrap values (≥ 50) are shown along nodes. Blue texture indicates mycorrhizal fungi of *Pleione bulbocodioides* detected in this study. Boldface and ### show the MF detected from ≥ 38 (90% of the total) individuals and those shared by 7 age groups. Green shows the OMF of *P. bulbocodioides* reported in one previous study [44]. Pink shows rhizoctonia fungi detected in ≤ 5 individuals (as opportunists) in this study.