

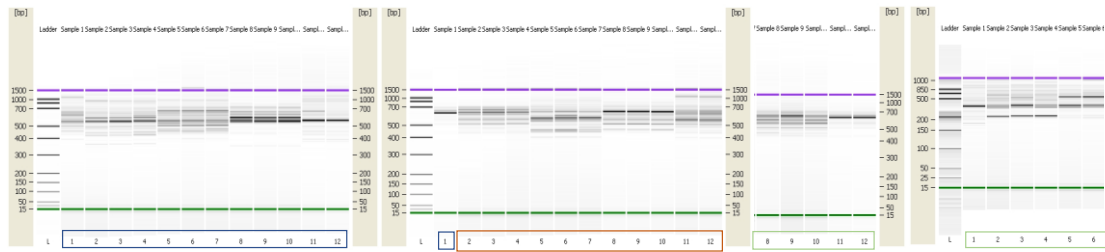
Supplementary material

Supplementary Table 1 Shotgun metagenome sequencing total number of reads, total number of classified fungal and bacterial reads per sample. Their means and SD are shown. Per each location (Bóbrka, Białowieża and Warsaw) six phyllosphere samples were sequenced.

	Total number of reads	Total number of classified fungal reads	Total number of classified bacterial reads	Fungi		Bacteria	
				mean	SD	mean	SD
Bóbrka 1	305,400	16,733	285,818	14,106.00	7,097.73	340,110.50	64,229.54
Bóbrka 2	413,132	9,075	400,744				
Bóbrka 3	442,307	7,896	42,854				
Bóbrka 4	330,779	21,241	304,252				
Bóbrka 5	297,404	21,870	271,924				
Bóbrka 6	349,848	6,809	339,359				
Białowieża 1	485,062	5,536	475,564	4,449.00	1,011.79	426,475.33	77,314.96
Białowieża 2	465,702	4,254	458,499				
Białowieża 3	493,303	2,903	487,623				
Białowieża 4	481,196	4,468	473,548				
Białowieża 5	335,726	4,478	328,274				
Białowieża 6	332,377	4,160	322,688				
Warsaw 1	419,482	12,590	266,920	5,704.17	4,734.63	336,557.33	62,557.18
Warsaw 2	386,176	11,254	404,347				
Warsaw 3	259,786	3,409	381,093				
Warsaw 4	374,014	4,332	251,606				
Warsaw 5	351,473	10,837	366,668				
Warsaw 6	272,565	8,245	266,920				

Supplementary Table 2. Overview cultivated epiphytic fungi from Bóbrka and Warsaw.

Site	Class	Genus	Species	Strains
Bóbrka	Dothideomycetes	<i>Alternaria</i>	<i>alternata</i>	AT37; AT11; AT14; AT28
	Dothideomycetes	<i>Cladosporium</i>	sp.	AT23; AT33
	Sordariomycetes	<i>Fusarium</i>	<i>lateritium</i>	AT6
	Sordariomycetes	<i>Fusarium</i>	<i>sporotrichiodes</i>	AT8; AT11; AT35
	Sordariomycetes	<i>Fusarium</i>	<i>avenaceum</i>	AT5; AT17; AT18; AT21
	Sordariomycetes	<i>Fusarium</i>	<i>proliferatum</i>	AT22
	Dothideomycetes	<i>Lophiostoma</i>	sp.	AT37
	Eurotiomycetes	<i>Penicillium</i>	<i>citrinum</i>	AT10
	Dothideomycetes	<i>Phoma</i>	<i>herbarum</i>	AT15; AT16
	Sordariomycetes	<i>Sarocladium</i>	<i>strictum</i>	AT4
Warsaw	Sordariomycetes	<i>Acremonium</i>	<i>frucatum</i>	AT3
	Dothideomycetes	<i>Aureobasidium</i>	<i>pullulans</i>	AT2; AT20; AT25
	Dothideomycetes	<i>Cladosporium</i>	sp.	AT1



Supplementary Figure 1. Gel-like image generated by ARISA bioanalyzer to analyse the fungal diversity at the three sites (Warsaw, Bóbrka and Białowieża. The first column (L) shows the reference DNA ladder. Base pair sizes are indicated next to the ladder. The lowermost (15 bp) and the uppermost (1500 bp) bands represent the markers used to align the ladder data with data from the sample wells.