

Figure 1S. Classification of 970 HARVEST participants grouped according to BMI (kg/m²) and metabolic status, stratified by sex. Subjects without any abnormal parameter were defined as being metabolically healthy (Metab -). Data at baseline.

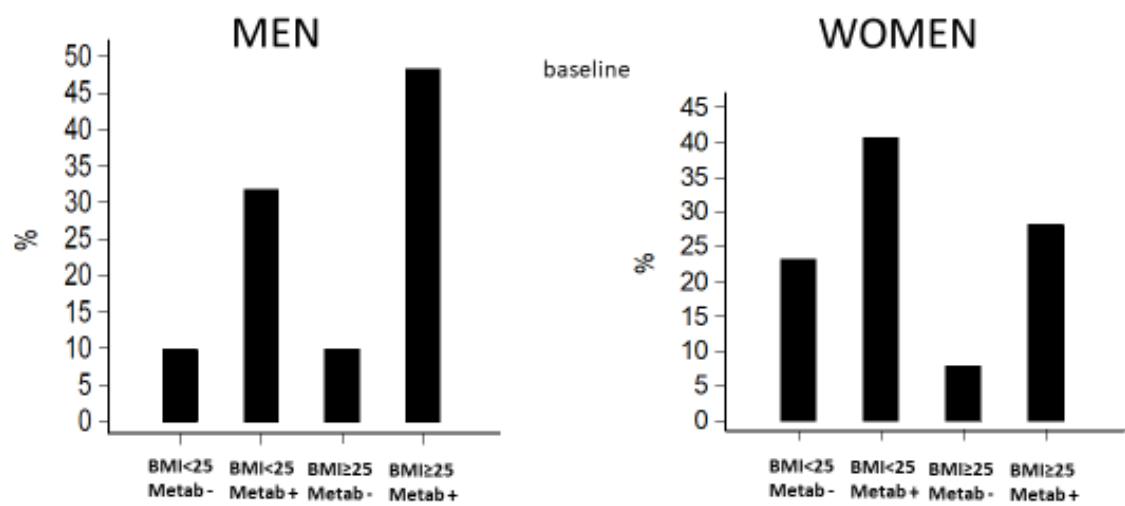


Figure 2S. Classification of 970 HARVEST participants grouped according to BMI (kg/m²) and metabolic, stratified by sex. Subjects without any abnormal parameter were defined as being metabolically healthy (Metab -). Data at follow-up end.

