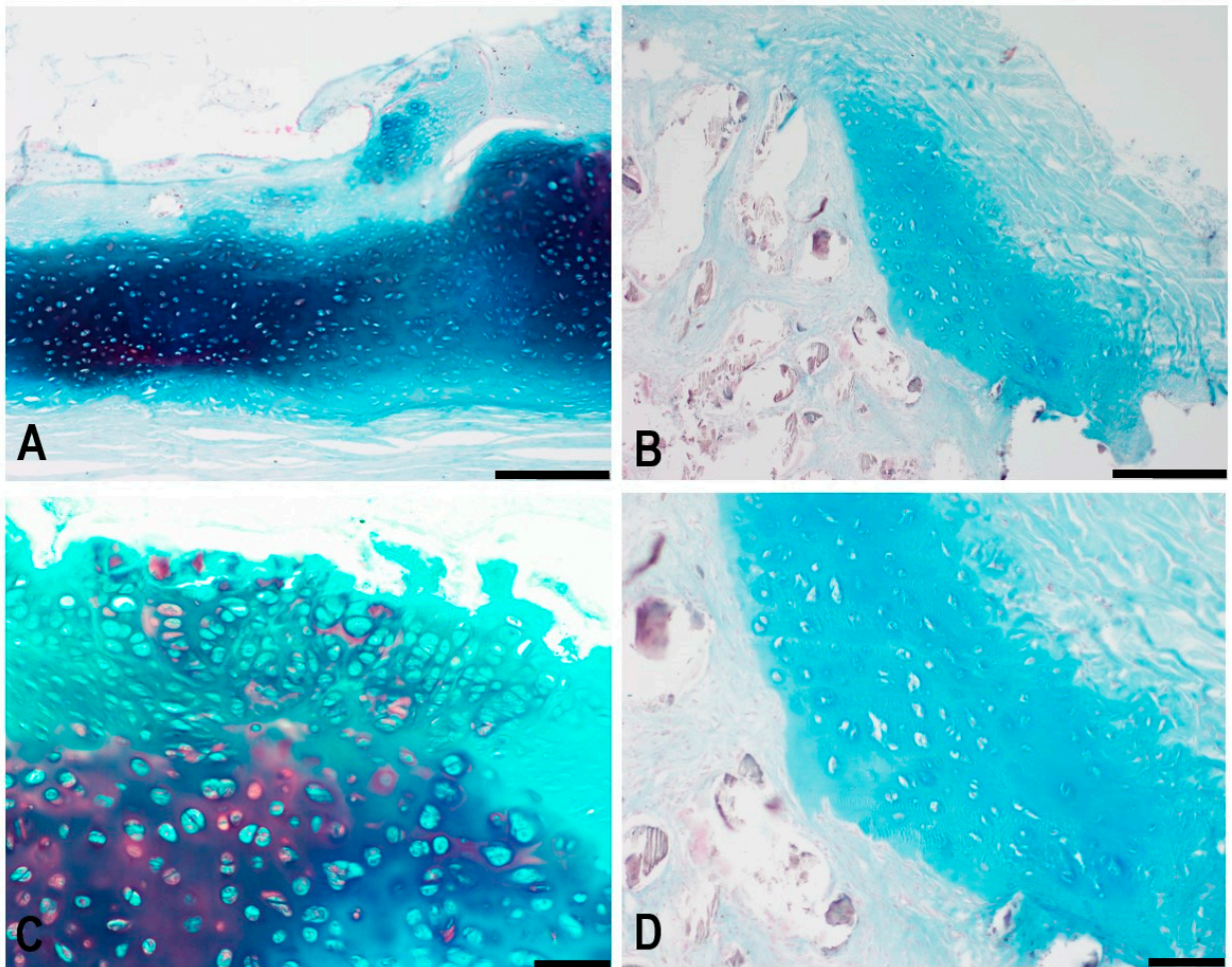


Supplementary Figure



Supplementary Figure S1: Histological evaluation of neo-cartilage tissue formed within the autologous bone graft (A, C), and Zengro[®] (B, D) at 10-week post-implantation stained with Alcian Blue technique (pH 1). Scale bar: 200 μ m (A, B), and 100 (C, D). Blue colour determines the presence of cartilage tissue with the tissue.