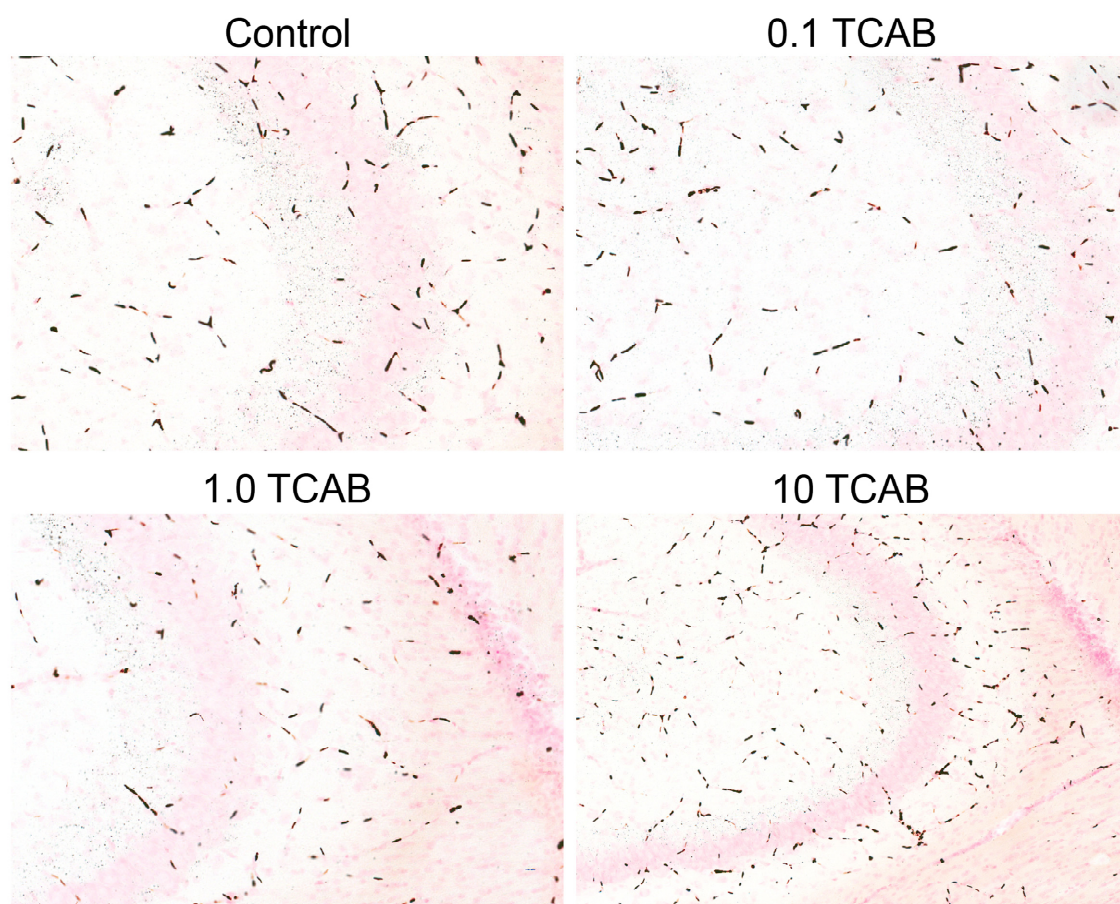
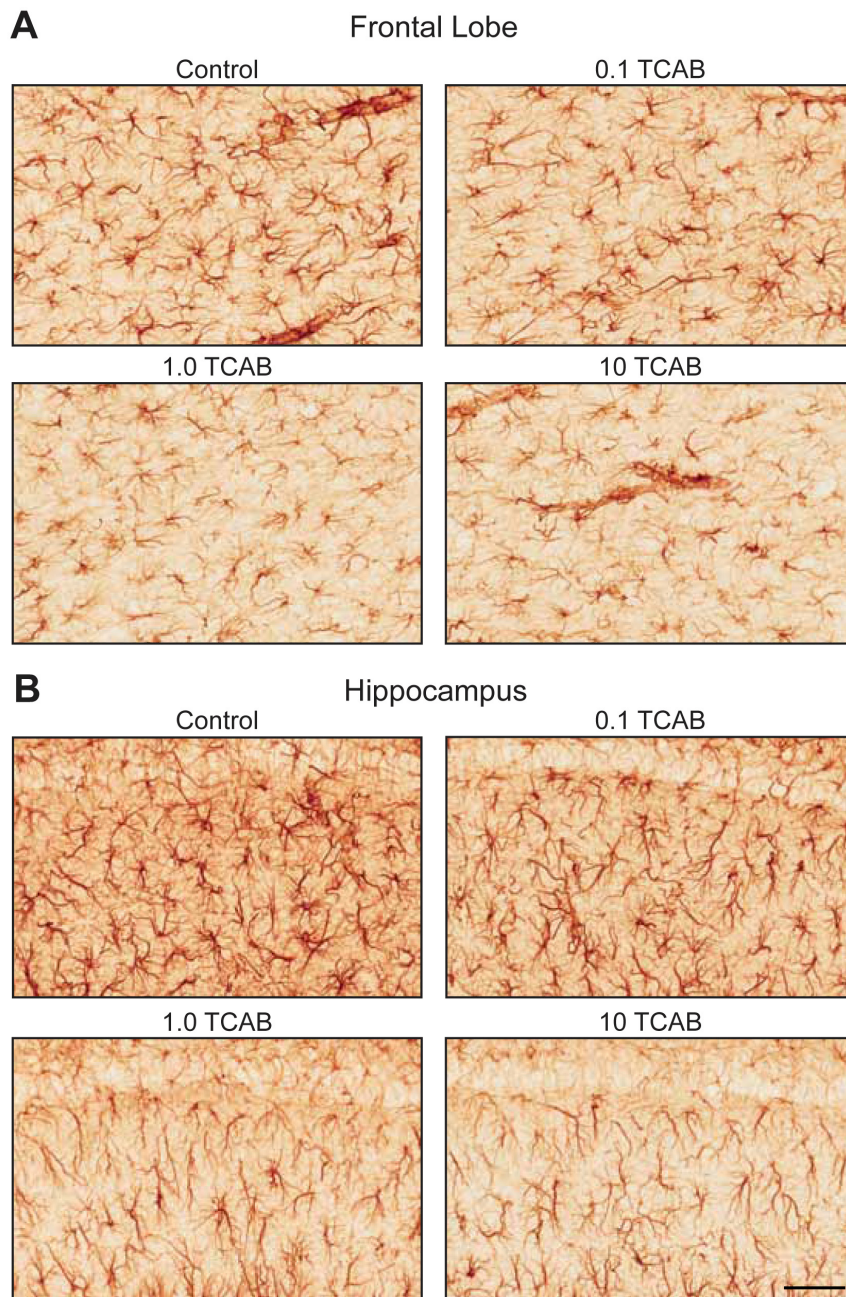


## Supplementary Information

**Figure S1.** CuAg staining within the CA3 mossy fiber region of PND21 rats exposed to various concentrations of TCAB during development. Blood vessels are detected as rod like structures, The dark punctate staining along the inner (left) CA3 neuronal region of the hippocampus identified by Neutral red counterstain represents synaptic pruning in the mossy fiber bouton region with development. This was prominent in the control and diminished in the 10 mg/kg/day TCAB dose group.



**Figure S2.** Representative GFAP+ astrocytes (brown) at PND21 within the (A) frontal lobe and (B) hippocampal molecular layer (ML). Image provide a larger field of the brain region and identify the region of interest (ROI) for scoring morphology. Scale bar = 50  $\mu$ m.





**Figure S3.** Representative Iba-1+ microglia (brown) at PND21 within the (A) frontal lobe and (B) hippocampal molecular layer (ML). Image provide a larger field of the brain region and identify the region of interest (ROI) for scoring morphology. Scale bar = 50  $\mu$ m.

