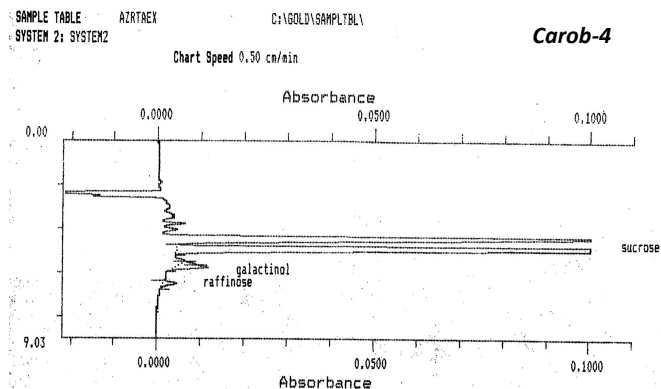
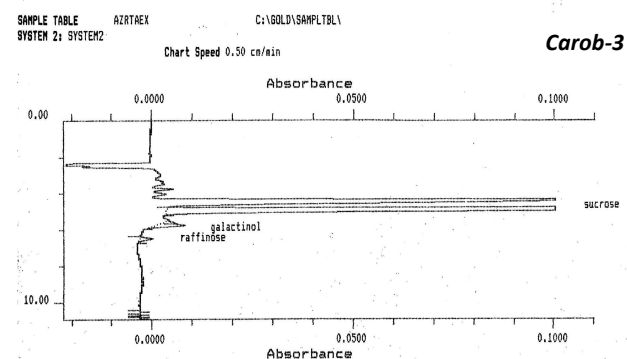
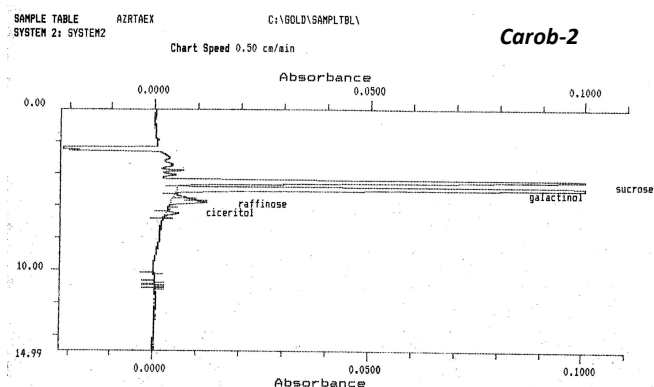
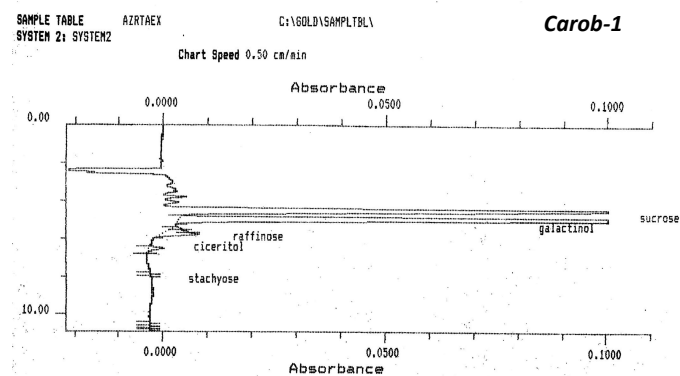
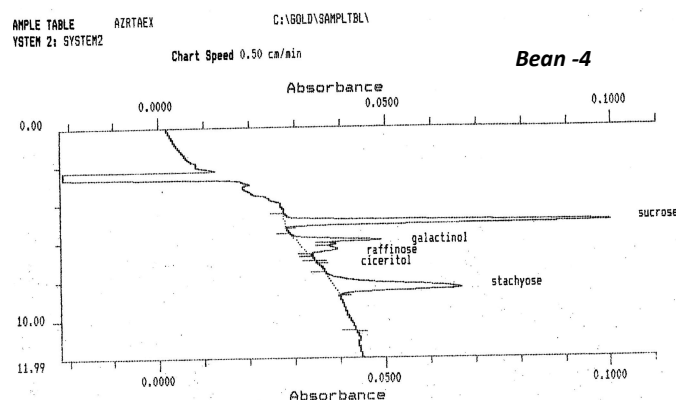
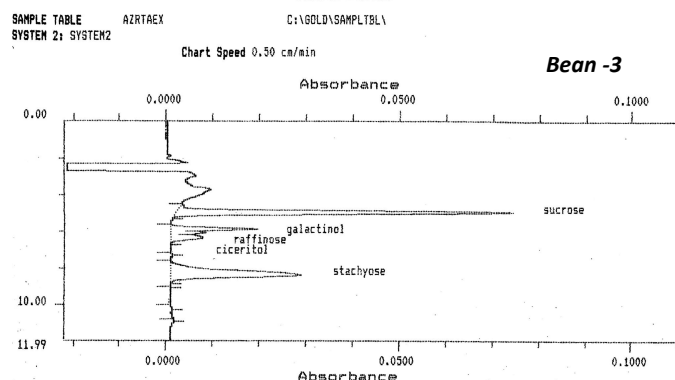
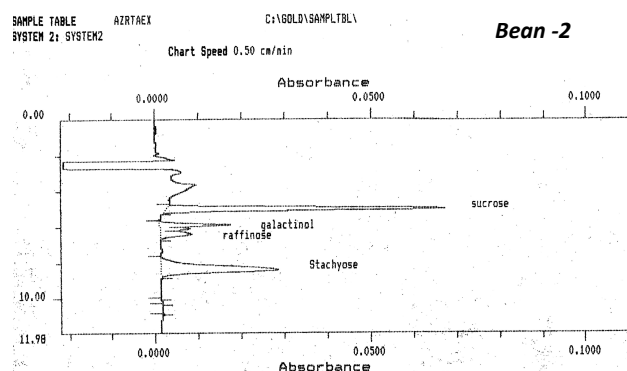
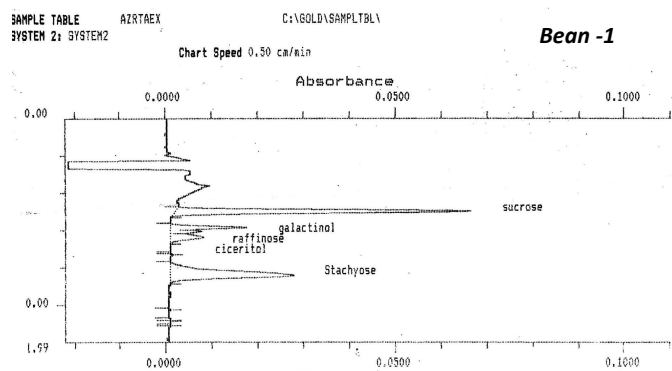


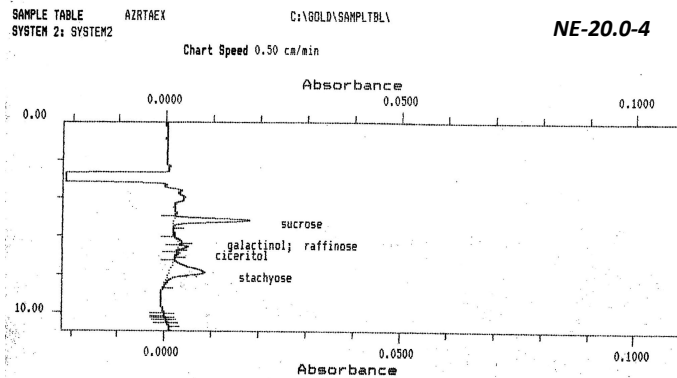
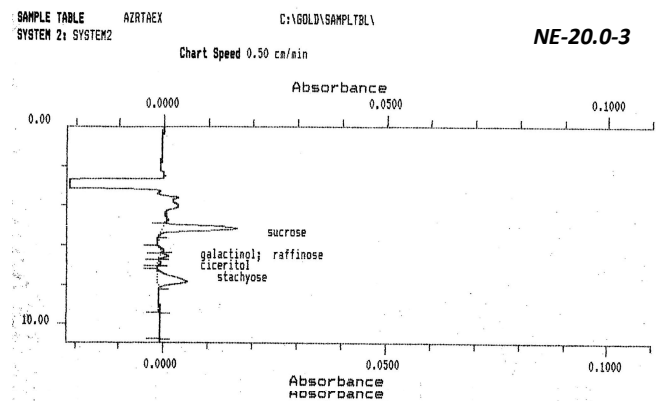
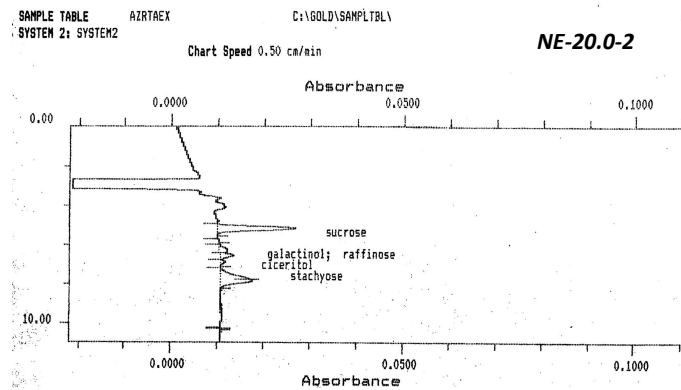
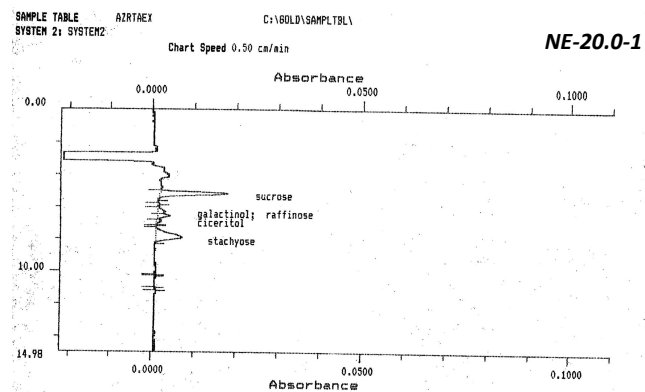
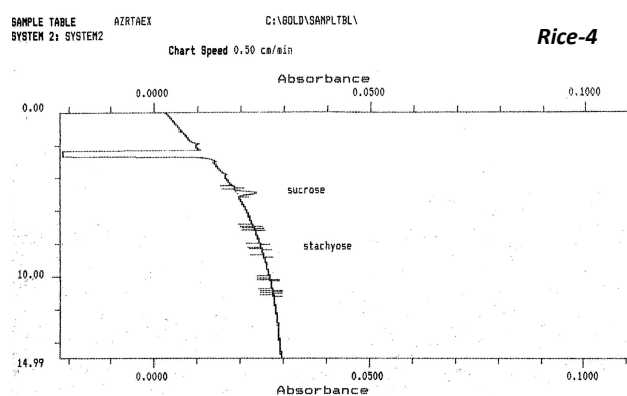
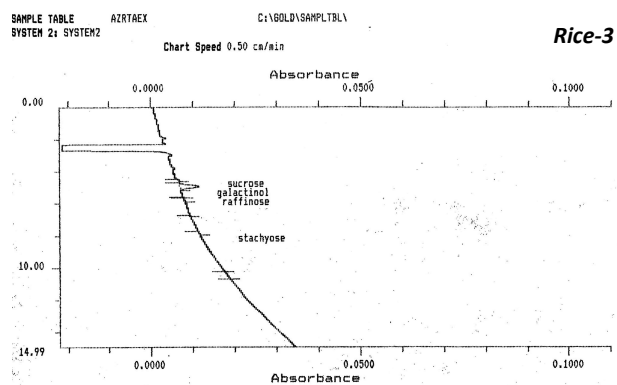
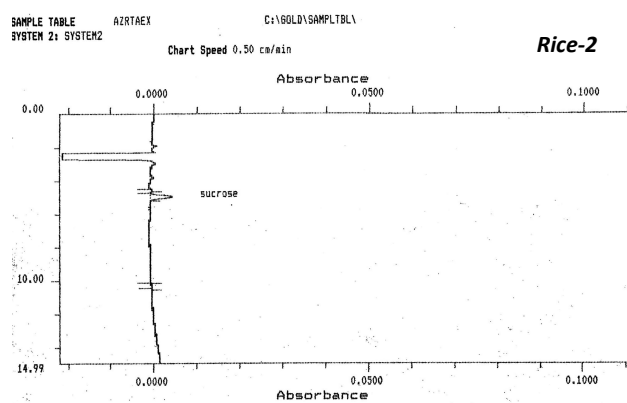
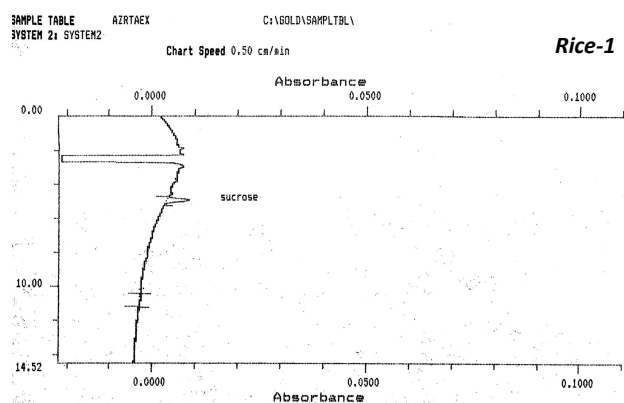
# Bioactive compounds, antioxidant activity and sensory analysis of rice-based extruded snacks-like fortified with bean and carob fruit flours

## Supplementary Material

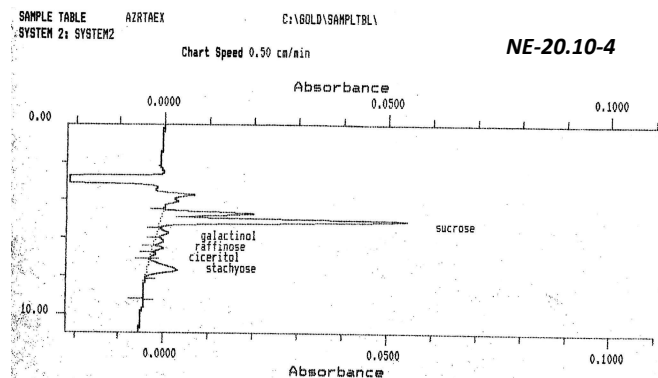
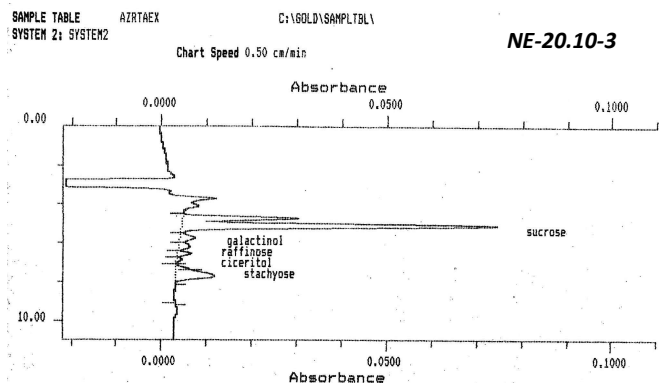
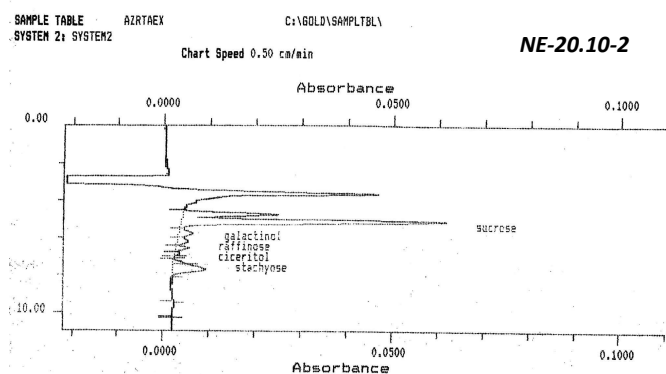
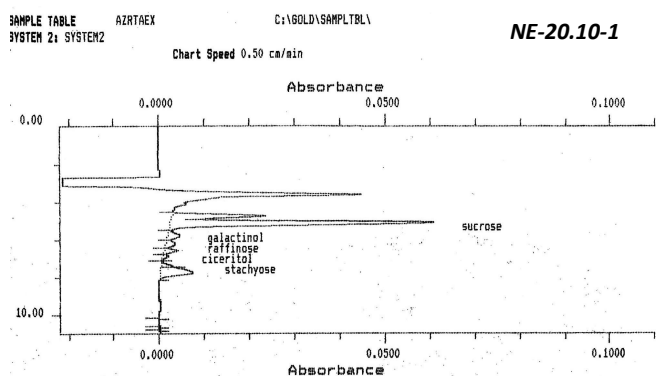
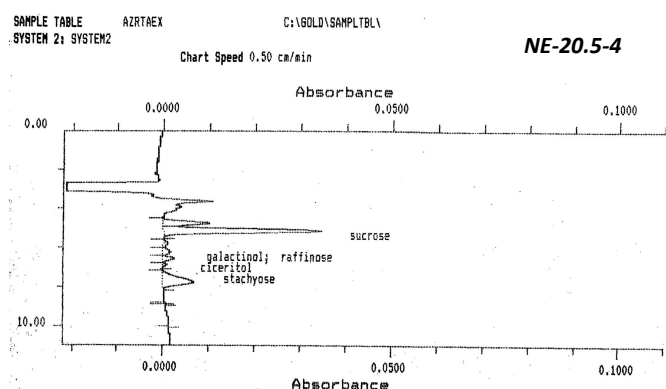
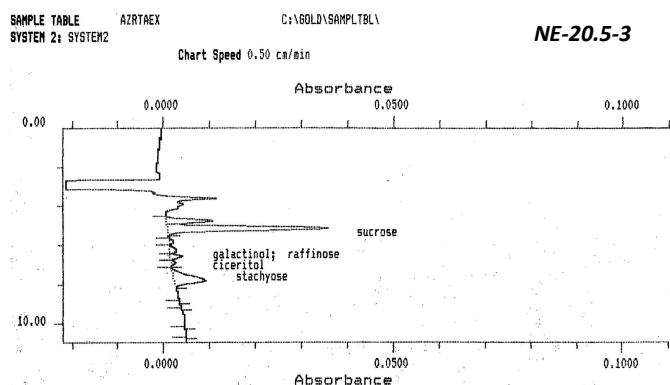
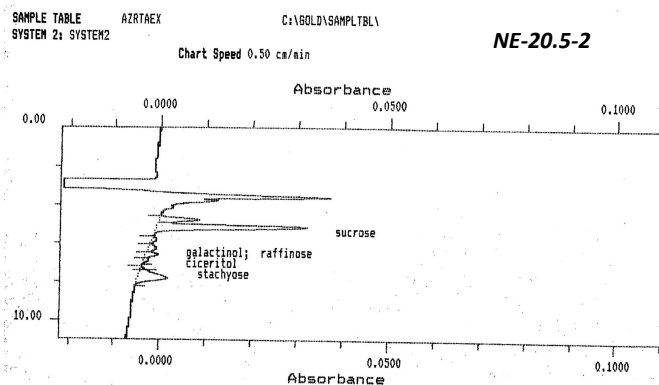
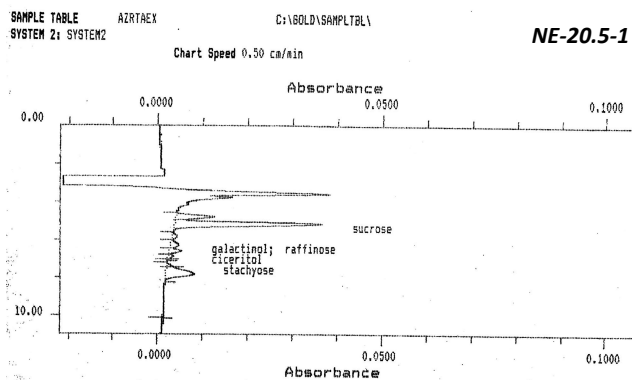
Figure S3. HPLC Chromatograms of sucrose, galactinol, raffinose, ciceritol and stachyose of the three raw materials, the six non-extruded (NE-), the six extruded (Ex-) flour formulations, and the extruded commercial sample.



\*\*Sample codes: 20.0 (20% bean; 0% whole carob fruit); 20.5 (20% bean; 5% whole carob fruit); 20.10 (20% bean; 10% whole carob fruit); 40.0 (40% bean; 0% whole carob fruit); 40.5 (40% bean; 5% whole carob fruit); 40.10 (40% bean; 10% whole carob fruit).

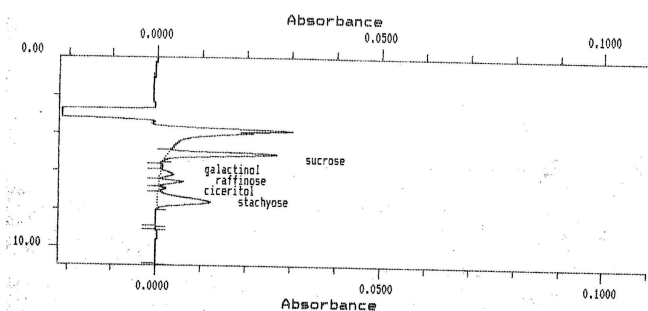


\*\*Sample codes: 20.0 (20% bean; 0% whole carob fruit); 20.5 (20% bean; 5% whole carob fruit); 20.10 (20% bean; 10% whole carob fruit); 40.0 (40% bean; 0% whole carob fruit); 40.5 (40% bean; 5% whole carob fruit); 40.10 (40% bean; 10% whole carob fruit).

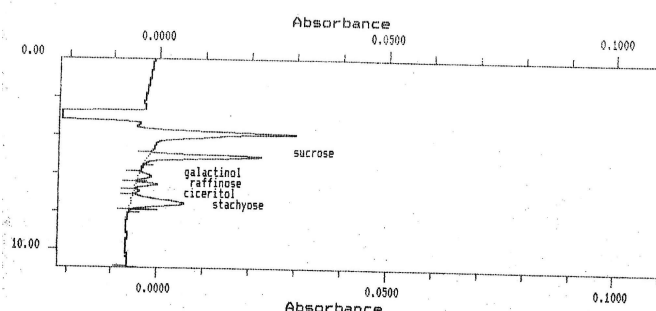


\*\*Sample codes: 20.0 (20% bean; 0% whole carob fruit); 20.5 (20% bean; 5% whole carob fruit); 20.10 (20% bean; 10% whole carob fruit); 40.0 (40% bean; 0% whole carob fruit); 40.5 (40% bean; 5% whole carob fruit); 40.10 (40% bean; 10% whole carob fruit).

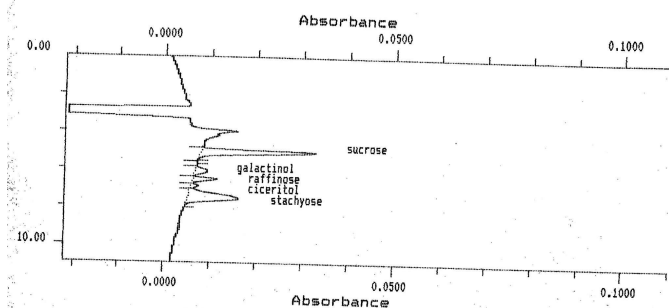
SAMPLE TABLE AZRTAEX C:\GOLD\SAMPLTBL\  
SYSTEM 2: SYSTEM2 Chart Speed 0.50 cm/min **NE-40.0-1**



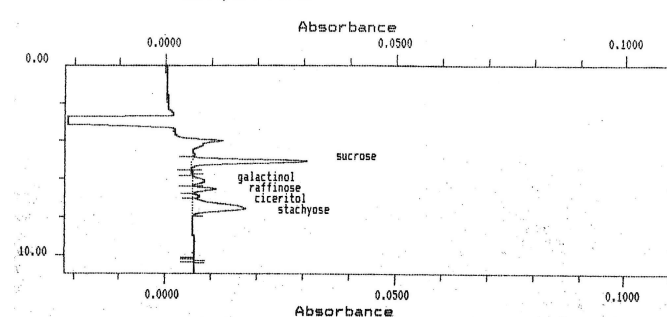
SAMPLE TABLE AZRTAEX C:\GOLD\SAMPLTBL\  
SYSTEM 2: SYSTEM2 Chart Speed 0.50 cm/min **NE-40.0-2**



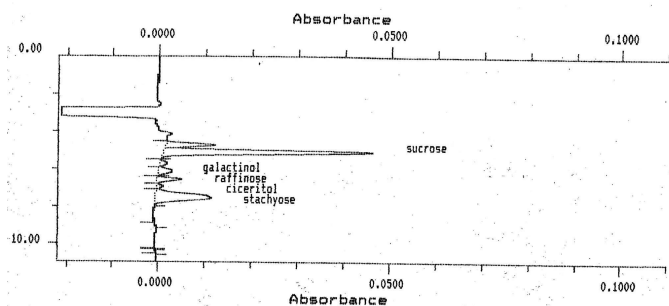
SAMPLE TABLE AZRTAEX C:\GOLD\SAMPLTBL\  
SYSTEM 2: SYSTEM2 Chart Speed 0.50 cm/min **NE-40.0-3**



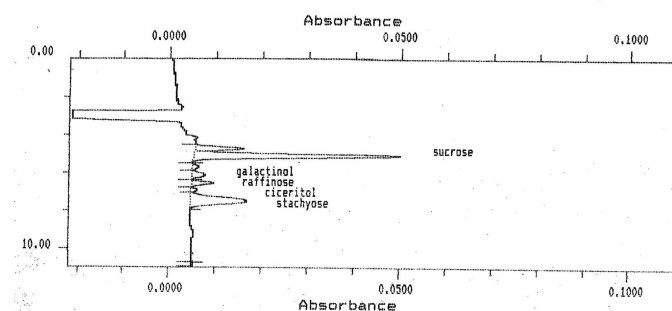
SAMPLE TABLE AZRTAEX C:\GOLD\SAMPLTBL\  
SYSTEM 2: SYSTEM2 Chart Speed 0.50 cm/min **NE-40.0-4**



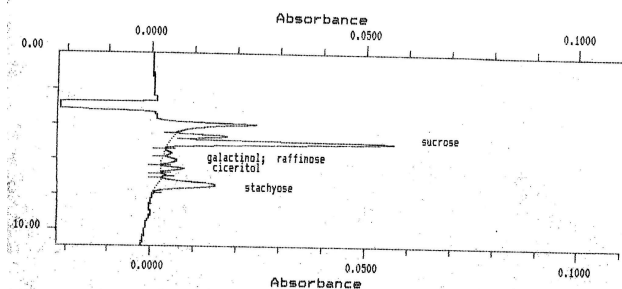
SAMPLE TABLE AZRTAEX C:\GOLD\SAMPLTBL\  
SYSTEM 2: SYSTEM2 Chart Speed 0.50 cm/min **NE-40.5-1**



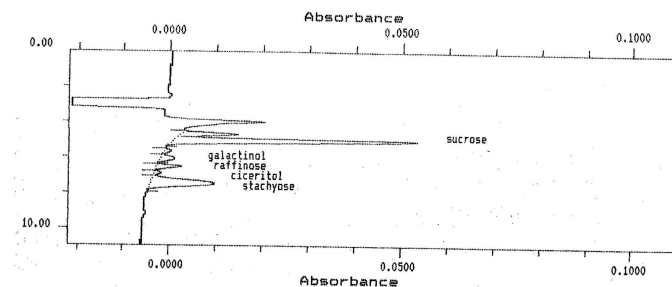
SAMPLE TABLE AZRTAEX C:\GOLD\SAMPLTBL\  
SYSTEM 2: SYSTEM2 Chart Speed 0.50 cm/min **NE-40.5-2**



SAMPLE TABLE AZRTAEX C:\GOLD\SAMPLTBL\  
SYSTEM 2: SYSTEM2 Chart Speed 0.50 cm/min **NE-40.5-3**

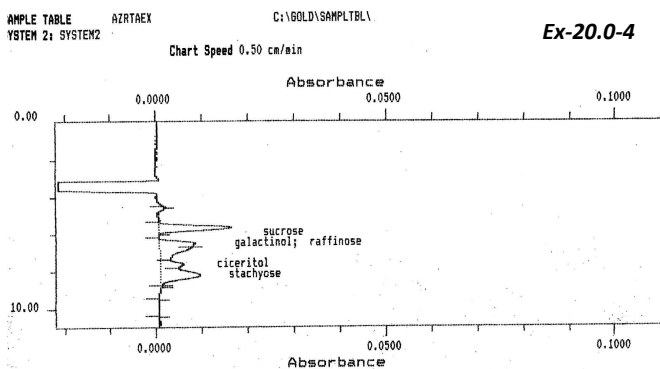
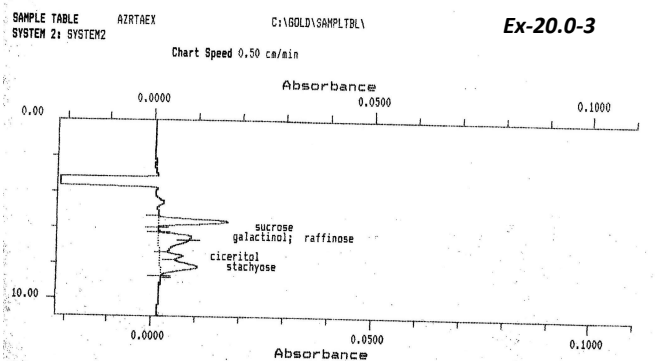
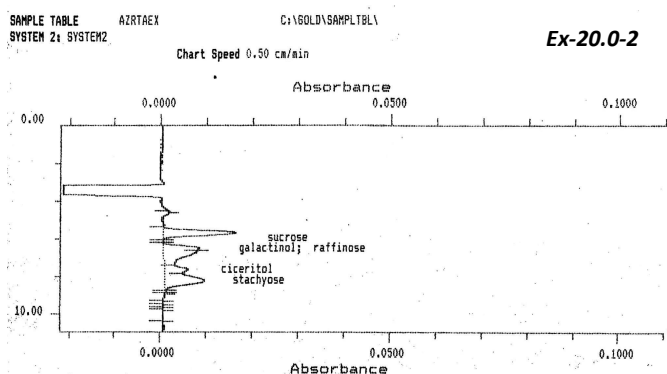
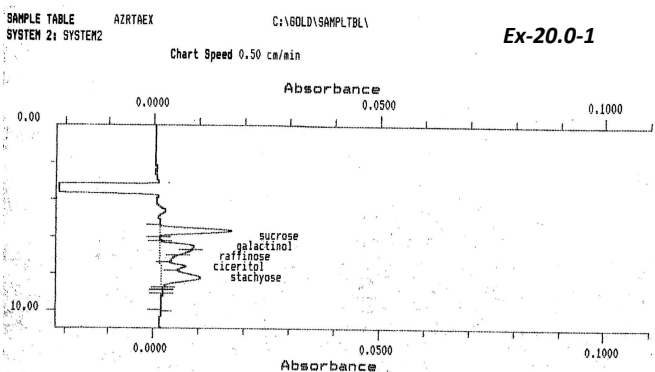
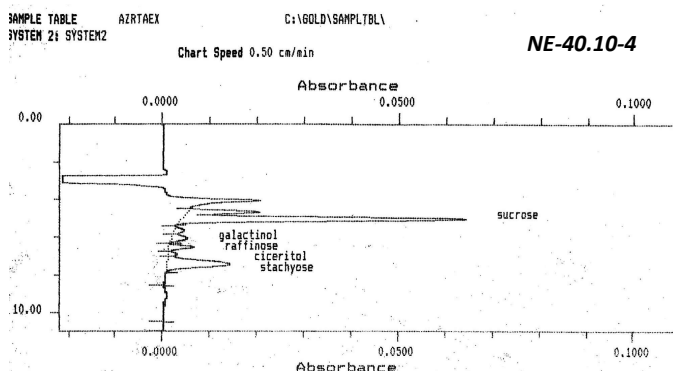
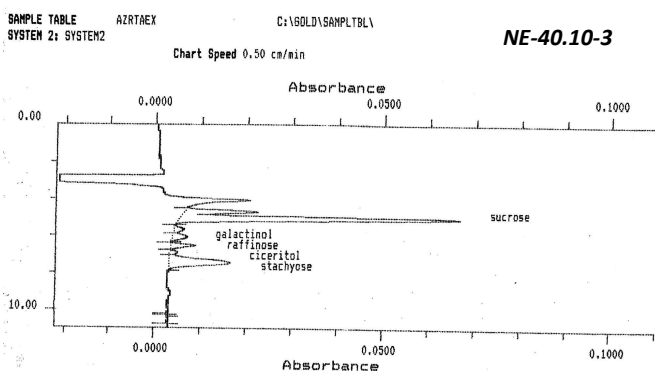
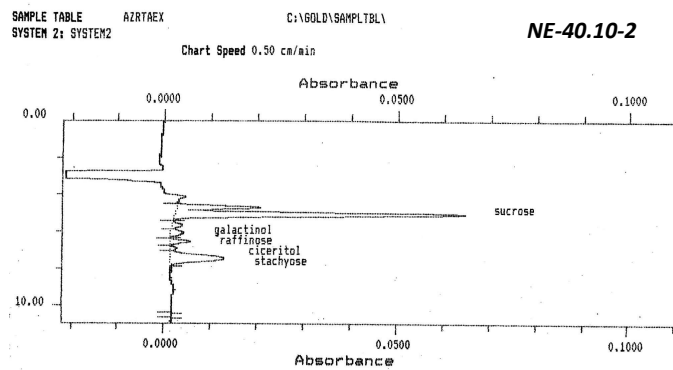
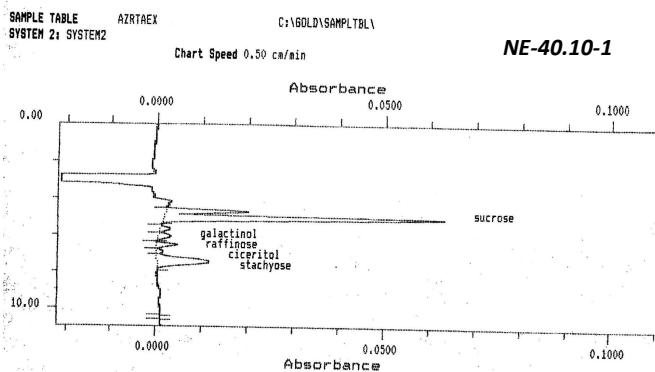


SAMPLE TABLE AZRTAEX C:\GOLD\SAMPLTBL\  
SYSTEM 2: SYSTEM2 Chart Speed 0.50 cm/min **NE-40.5-4**



\*\*Sample codes: 20.0 (20% bean; 0% whole carob fruit); 20.5 (20% bean; 5% whole carob fruit); 20.10 (20% bean; 10% whole carob fruit); 40.0 (40% bean; 0% whole carob fruit); 40.5 (40% bean; 5% whole carob fruit); 40.10 (40% bean; 10% whole carob fruit).

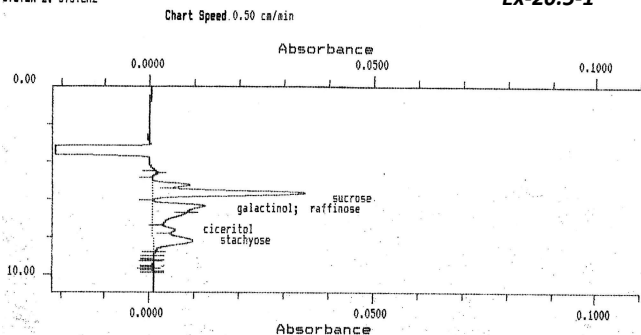




\*\*Sample codes: 20.0 (20% bean; 0% whole carob fruit); 20.5 (20% bean; 5% whole carob fruit); 20.10 (20% bean; 10% whole carob fruit); 40.0 (40% bean; 0% whole carob fruit); 40.5 (40% bean; 5% whole carob fruit); 40.10 (40% bean; 10% whole carob fruit).

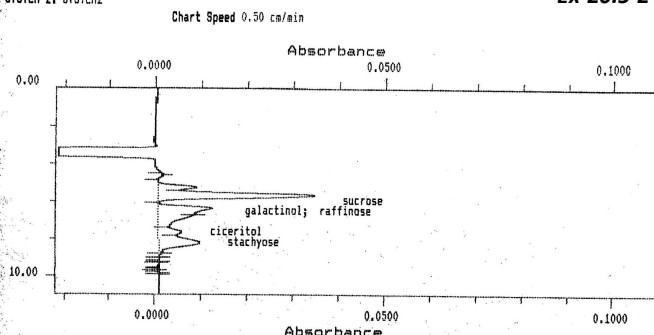
SAMPLE TABLE AZRTAEX C:\GOLD\SAMPLTBL\  
SYSTEM 2: SYSTEM2

**Ex-20.5-1**



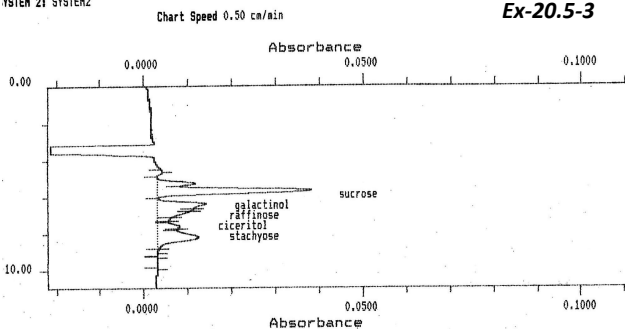
SAMPLE TABLE AZRTAEX C:\GOLD\SAMPLTBL\  
SYSTEM 2: SYSTEM2

**Ex-20.5-2**



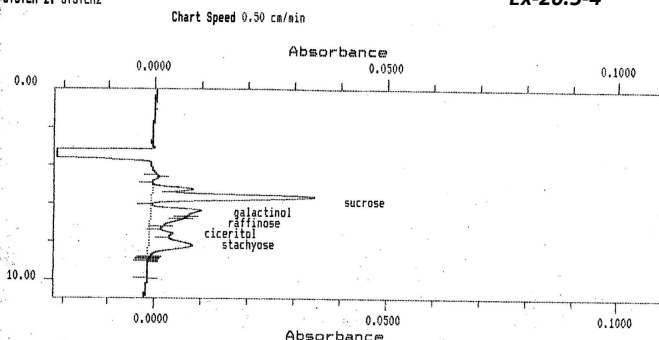
SAMPLE TABLE AZRTAEX C:\GOLD\SAMPLTBL\  
SYSTEM 2: SYSTEM2

**Ex-20.5-3**



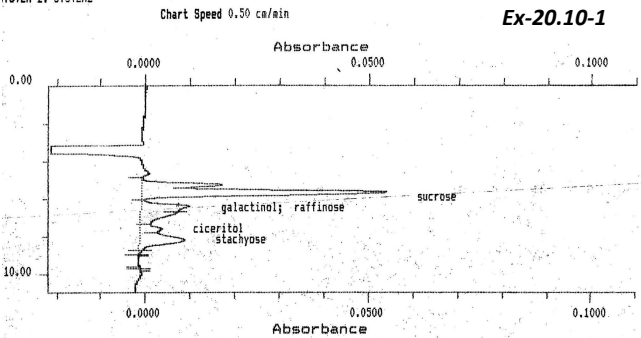
SAMPLE TABLE AZRTAEX C:\GOLD\SAMPLTBL\  
SYSTEM 2: SYSTEM2

**Ex-20.5-4**



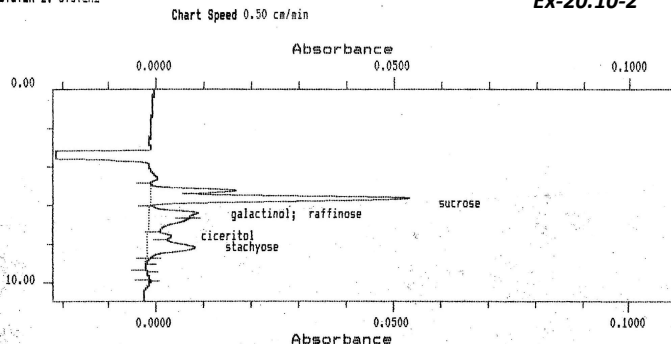
SAMPLE TABLE AZRTAEX C:\GOLD\SAMPLTBL\  
SYSTEM 2: SYSTEM2

**Ex-20.10-1**



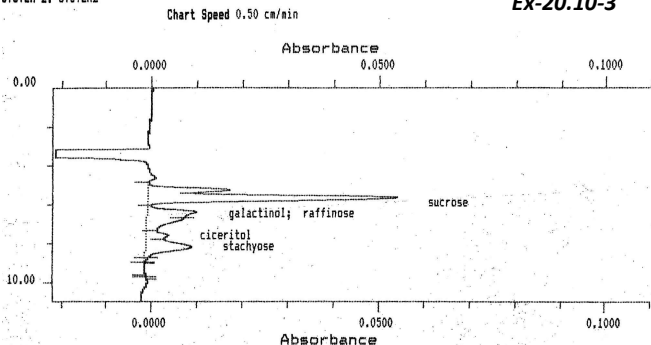
SAMPLE TABLE AZRTAEX C:\GOLD\SAMPLTBL\  
SYSTEM 2: SYSTEM2

**Ex-20.10-2**



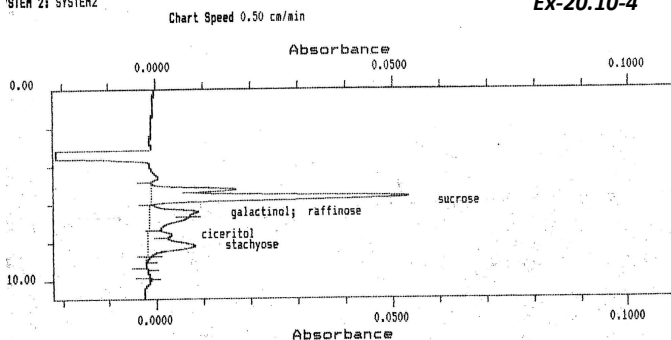
SAMPLE TABLE AZRTAEX C:\GOLD\SAMPLTBL\  
SYSTEM 2: SYSTEM2

**Ex-20.10-3**

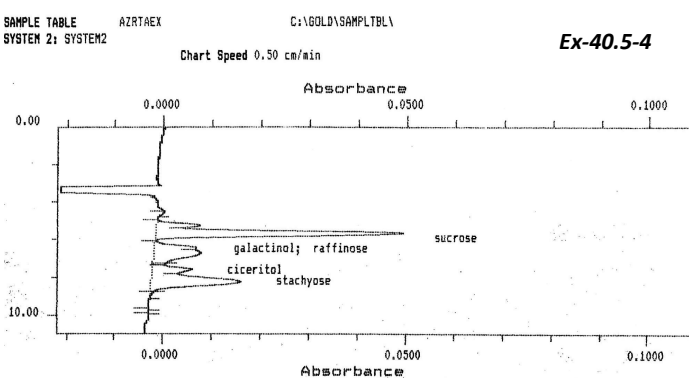
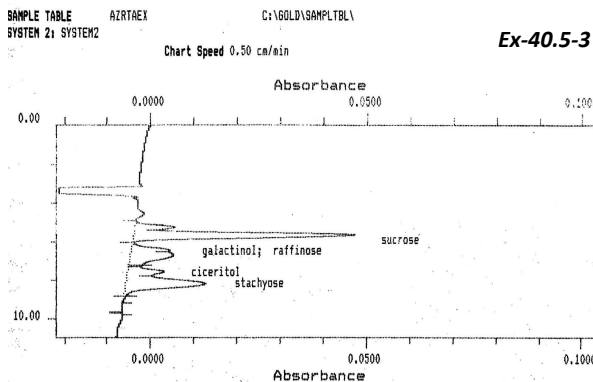
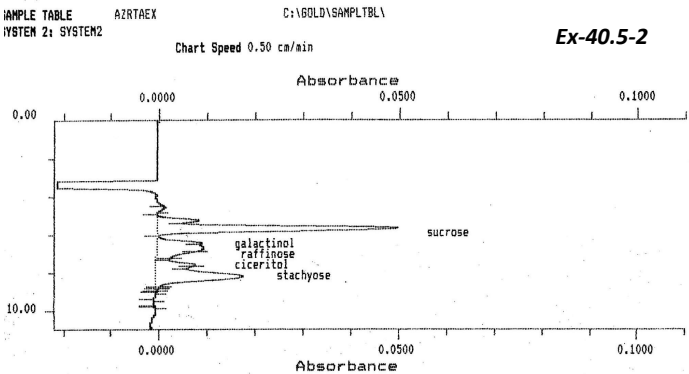
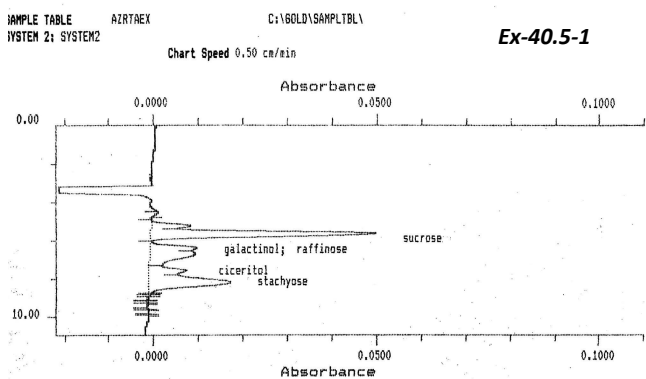
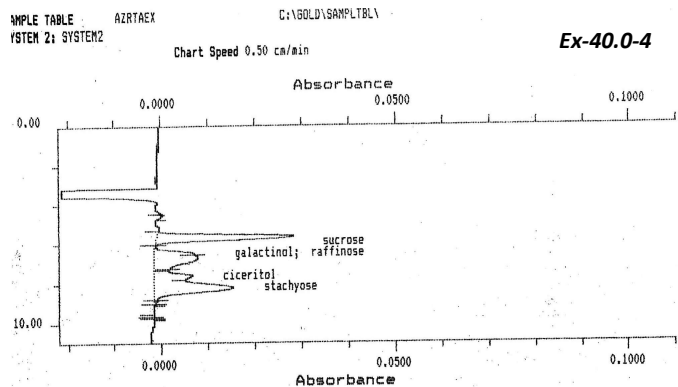
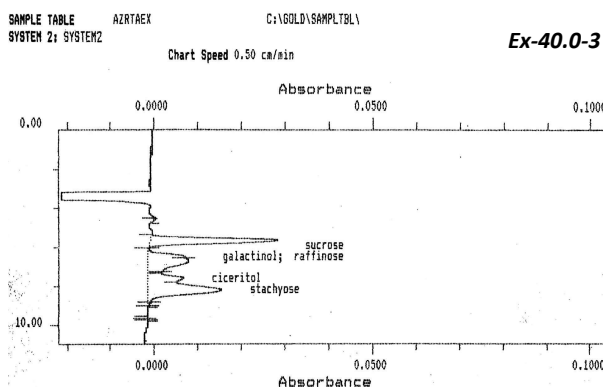
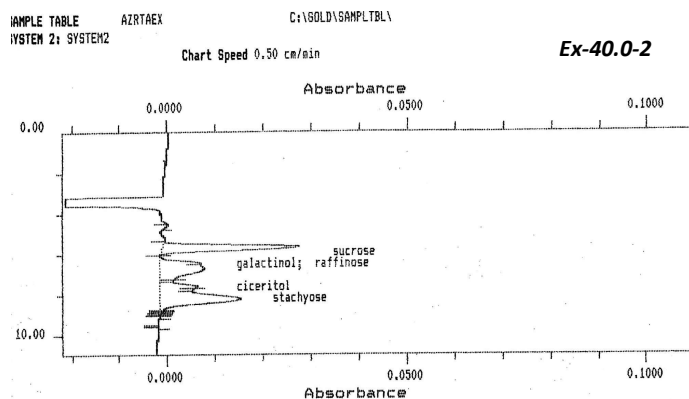
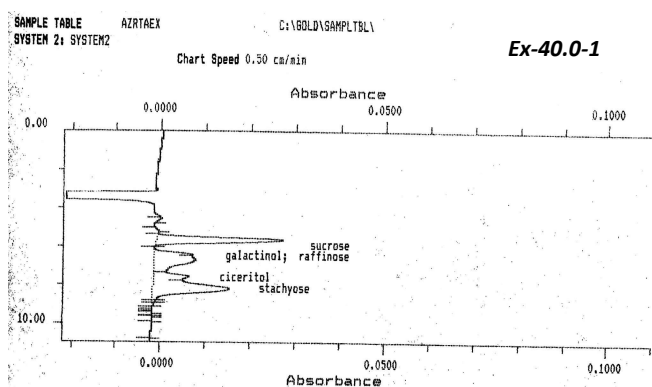


SAMPLE TABLE AZRTAEX C:\GOLD\SAMPLTBL\  
SYSTEM 2: SYSTEM2

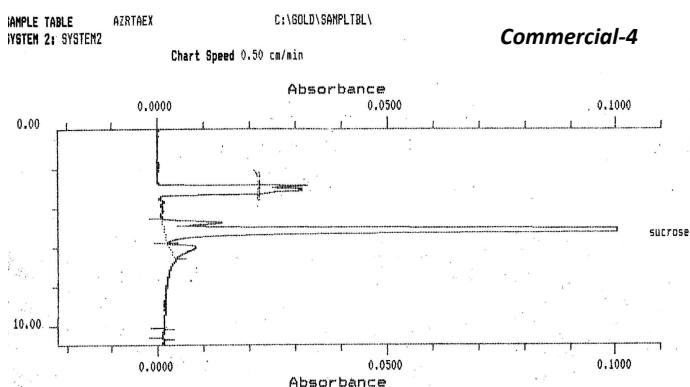
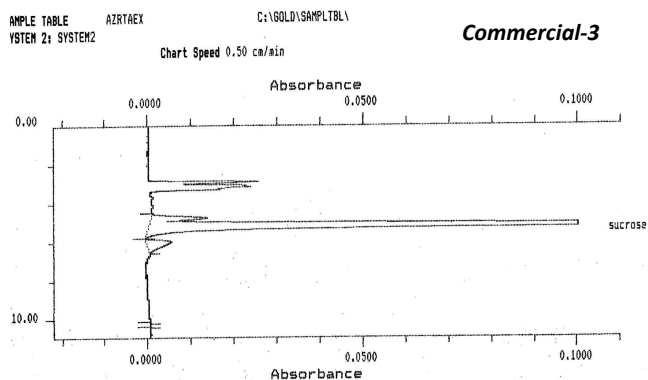
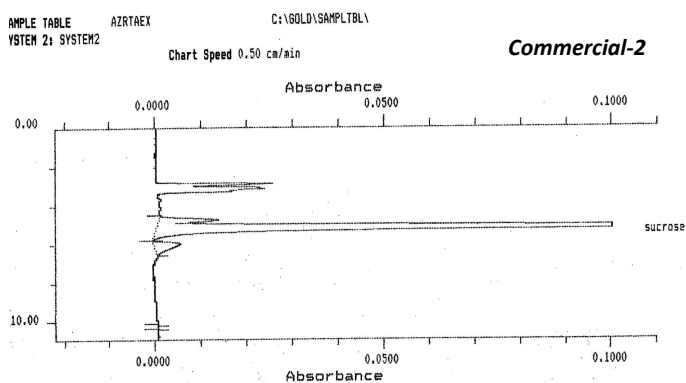
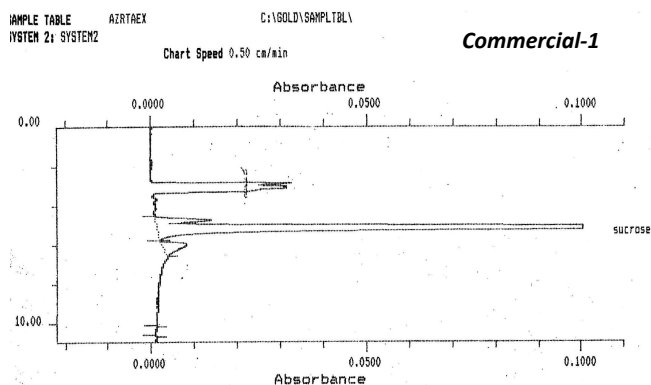
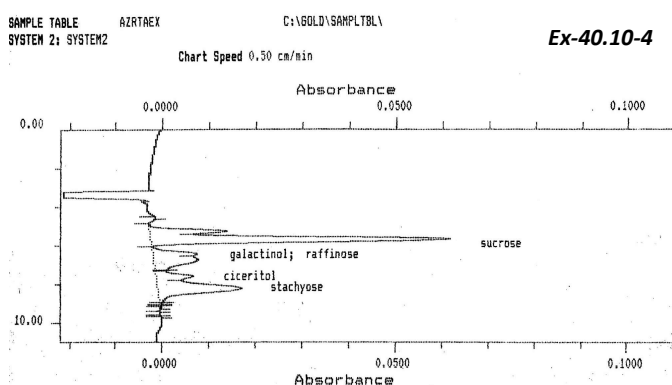
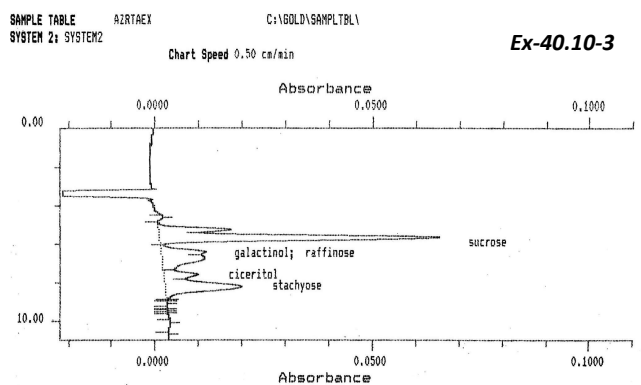
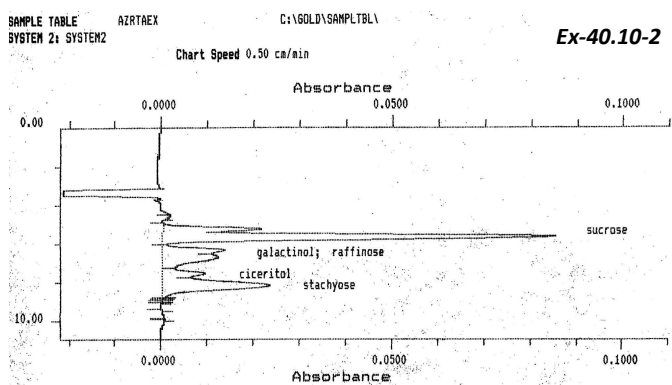
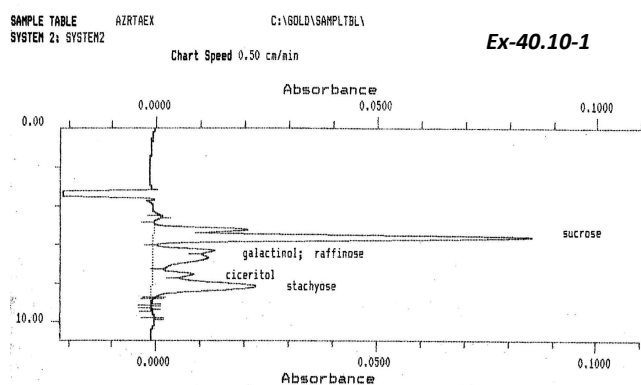
**Ex-20.10-4**



\*\*Sample codes: 20.0 (20% bean; 0% whole carob fruit); 20.5 (20% bean; 5% whole carob fruit); 20.10 (20% bean; 10% whole carob fruit); 40.0 (40% bean; 0% whole carob fruit); 40.5 (40% bean; 5% whole carob fruit); 40.10 (40% bean; 10% whole carob fruit).



\*\*Sample codes: 20.0 (20% bean; 0% whole carob fruit); 20.5 (20% bean; 5% whole carob fruit); 20.10 (20% bean; 10% whole carob fruit); 40.0 (40% bean; 0% whole carob fruit); 40.5 (40% bean; 5% whole carob fruit); 40.10 (40% bean; 10% whole carob fruit).



\*\*Sample codes: 20.0 (20% bean; 0% whole carob fruit); 20.5 (20% bean; 5% whole carob fruit); 20.10 (20% bean; 10% whole carob fruit); 40.0 (40% bean; 0% whole carob fruit); 40.5 (40% bean; 5% whole carob fruit); 40.10 (40% bean; 10% whole carob fruit).