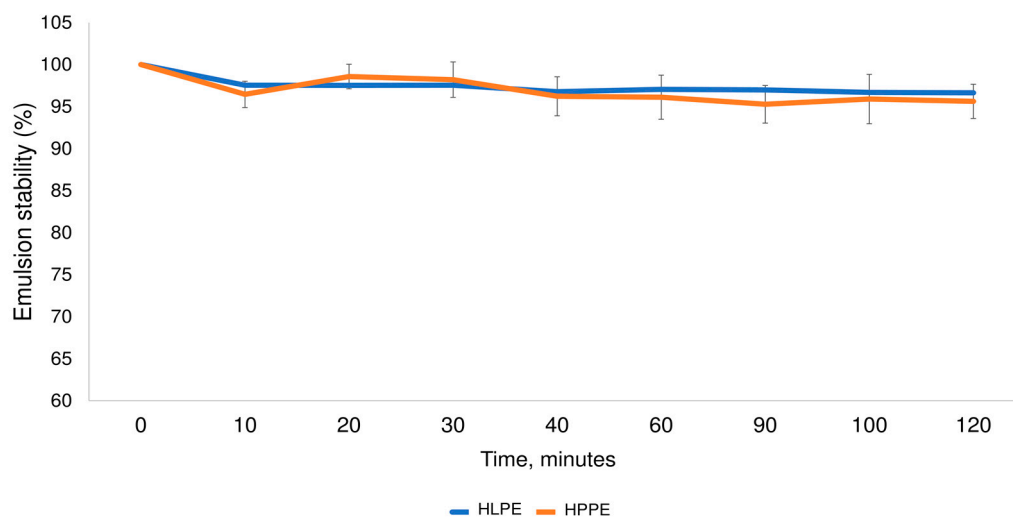


**Supplementary Materials:**

**Table S1:** Yield and recovery (% dry weight basis) of HLPE and HPPE.

|                         | HLPE                    | HPPE                    |
|-------------------------|-------------------------|-------------------------|
| Yield (% dry weight)    | 31.9 <sup>b</sup> ± 0.2 | 33.5 <sup>a</sup> ± 0.3 |
| Recovery (% dry weight) | 72.1 <sup>a</sup> ± 4.0 | 76.5 <sup>b</sup> ± 1.5 |

All values are expressed as mean ± standard deviation (SD); n=3; Means with different superscripts (<sup>a-b</sup>) within each row are significantly different (p<0.05), as determined by the posthoc Tukey's Honestly Significant Difference (HSD) test.



**Figure S1.** Emulsion stability of HLPE and HPPE.