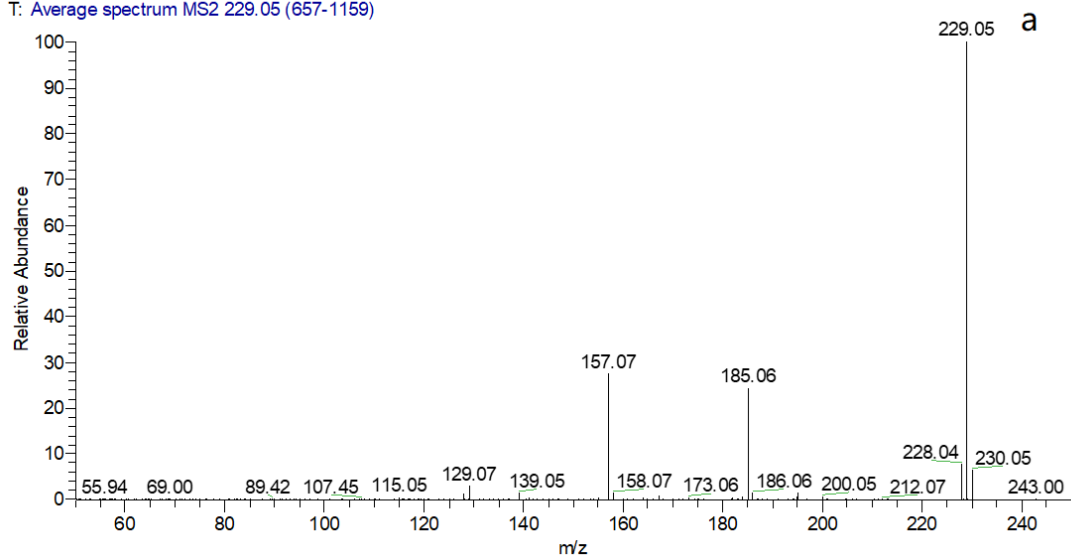
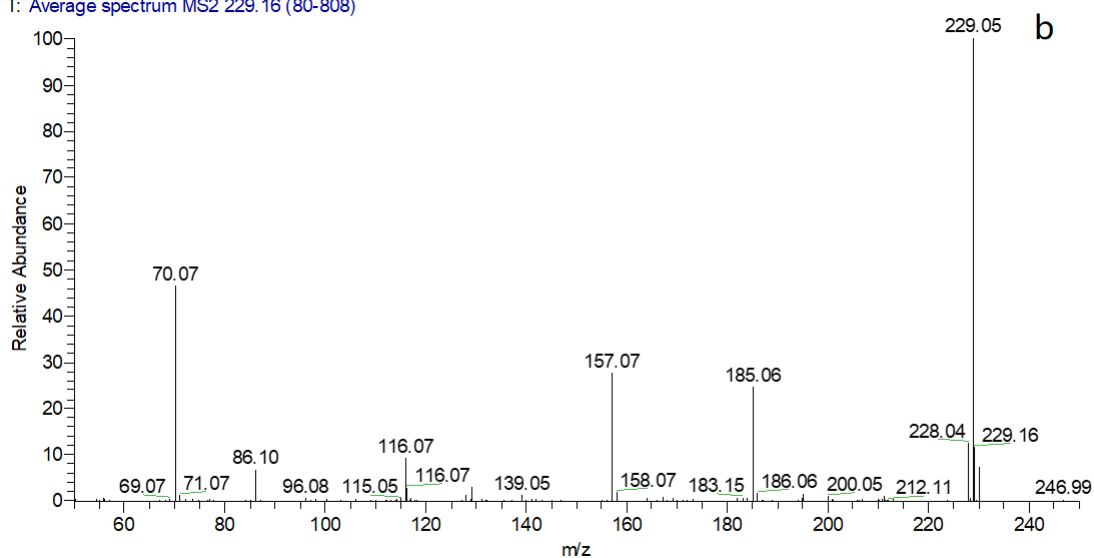


## Supplementary Materials

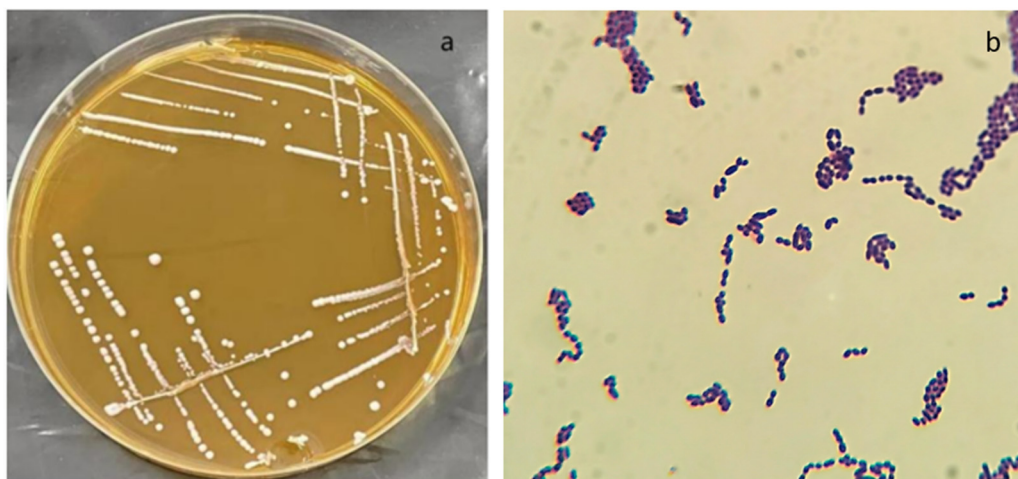
2022031011 #657-1159 RT: 2.90-4.94 AV: 11 NL: 2.00E7  
T: Average spectrum MS2 229.05 (657-1159)



2022031012 #80-808 RT: 0.38-3.05 AV: 2 NL: 4.29E6  
T: Average spectrum MS2 229.16 (80-808)



**Supplementary Figure S1.** HPLC-MS/MS analysis: (a) The standard urolithin A; (b) The urolithin A of the fermentation broth of the strain FUA329.



**Supplementary Figure S2.** (a) The colony morphology of the strain FUA329 on the ABB plate; (b) light microscopic picture (10×100 magnification).