

Supplementary materials

Figure S1. The gas chromatogram (a) and the compositions of acylglycerols (b) and fatty acids (c) of *Litsea cubeba* (A) peel, (B) fruit and (C) kernel oils from Soxhlet extraction. Numbers in the concentric circles represent the relative percentages.

Figure S2. The decoloring effect of different dosages of activated clay on *Litsea cubeba* oils from (a) fruits and (b) kernels.

Figure S1

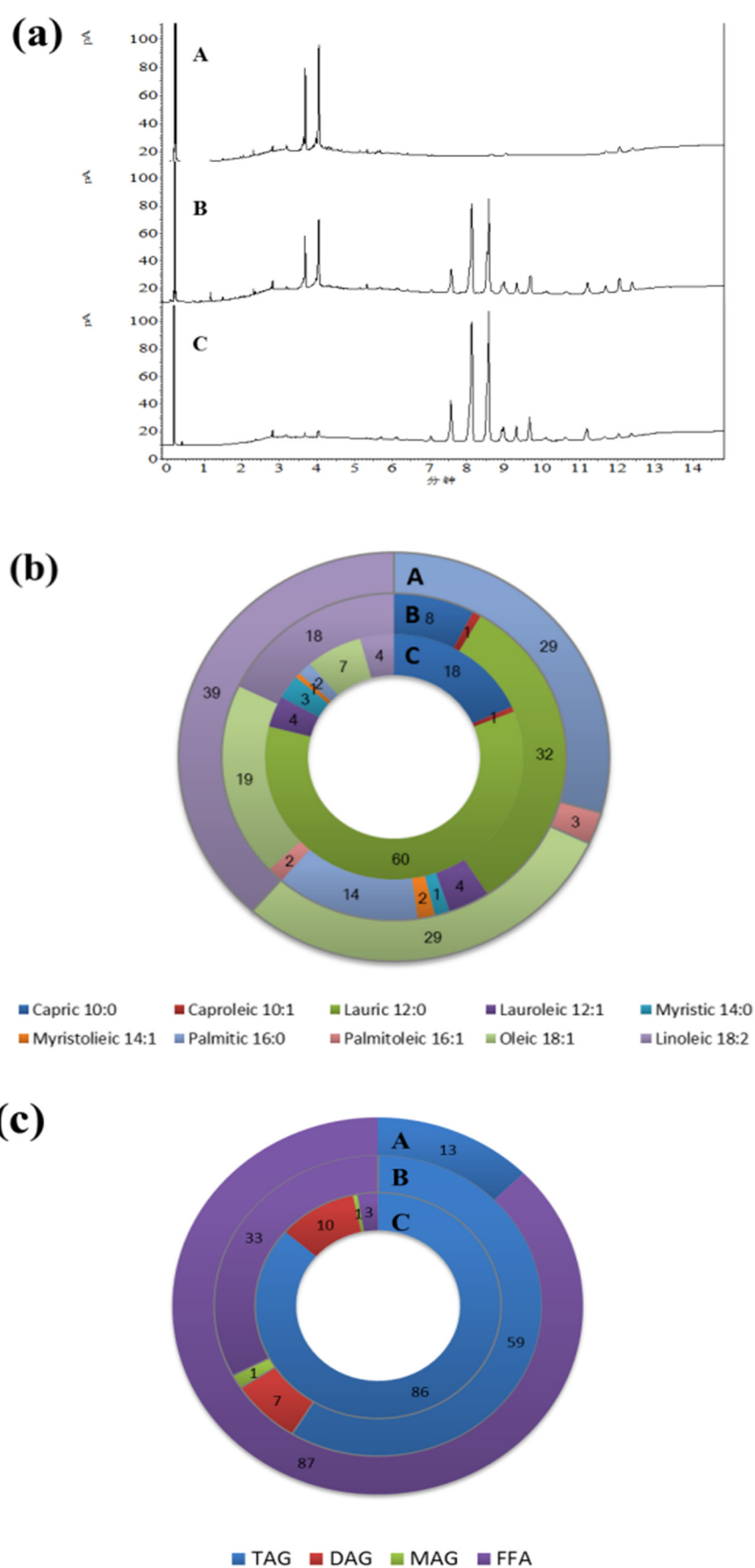


Figure S2

