

Both mass spectra was obtained by GC-MS analysis with Varian CP-3800/Saturn 2000 apparatus (Varian, Walnut Creek, CA, USA). MS operational conditions were as follows: ion source temperature: 250 °C; electron impact (EI) ionization at 70 eV; scanning mode from 35 to 300 m/z .

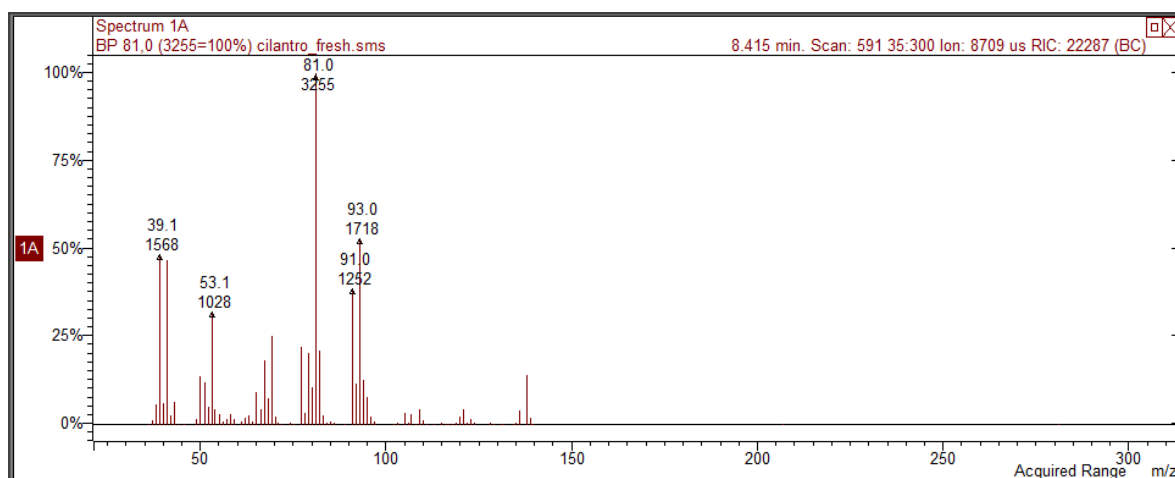


Figure S1 Unknown compound - LRI 992

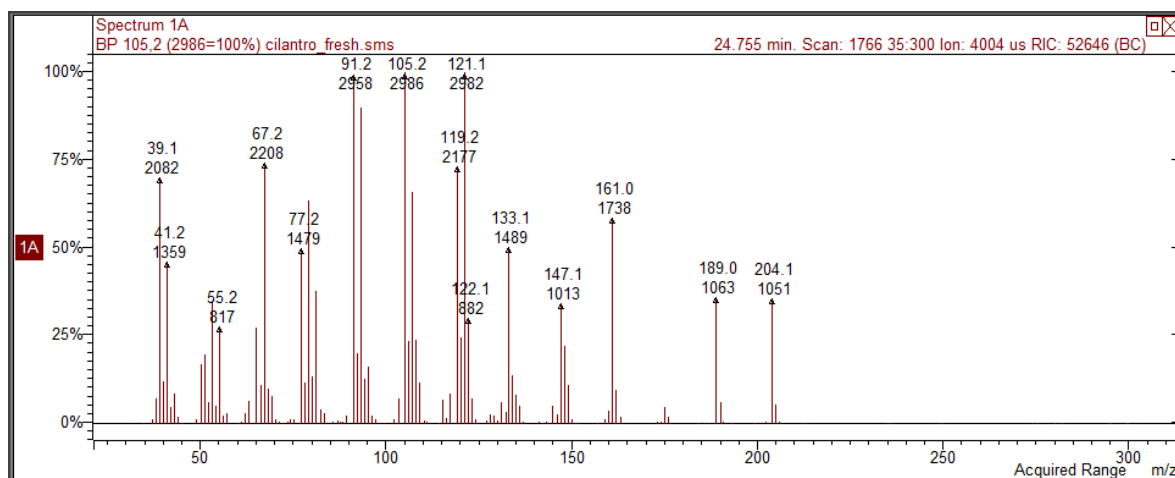


Figure S2 Unknown compound - LRI 1572