

Supporting Information

Synthesis of a Dichlorodigermasilane: Double Si–Cl Activation by a Ge=Ge unit.

Tomohiro Sugahara,¹ Norihiro Tokitoh¹ and Takahiro Sasamori,^{2,*}

¹ Institute for Chemical Research, Kyoto University, Gokasho Uji, Kyoto 611-0011, Japan

² Graduate School of Natural Sciences, Nagoya City University,
Yamanohata 1, Mizuho-cho, Mizuho-ku, Nagoya, Aichi 467-8501, Japan

E-mail: sasamori@nsc.nagoya-cu.ac.jp

Tel: +81-52-872-5820

NMR Data

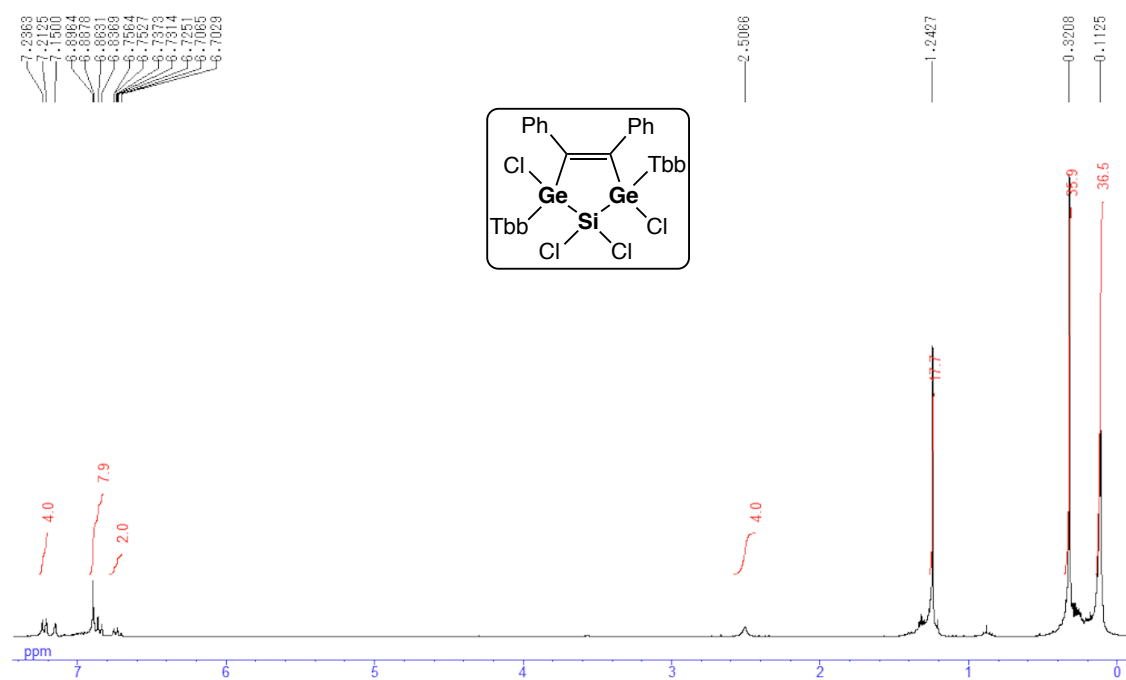


Figure S1. ¹H NMR spectrum of **3** in C₆D₆.

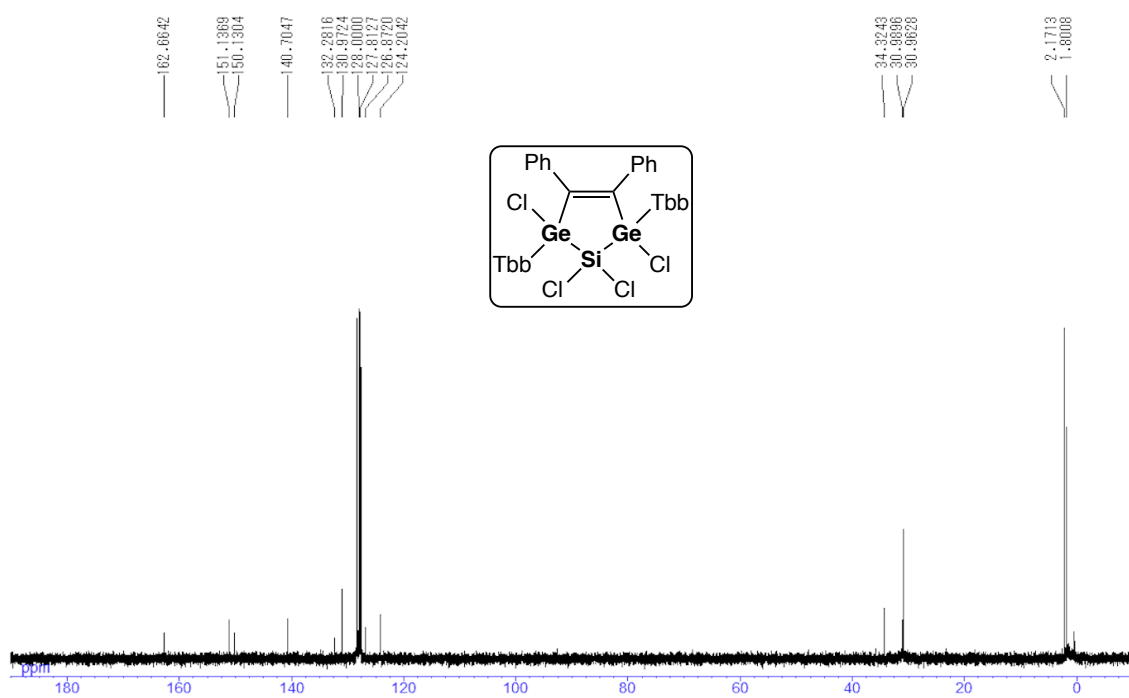


Figure S2. ¹³C NMR spectrum of **3** in C₆D₆

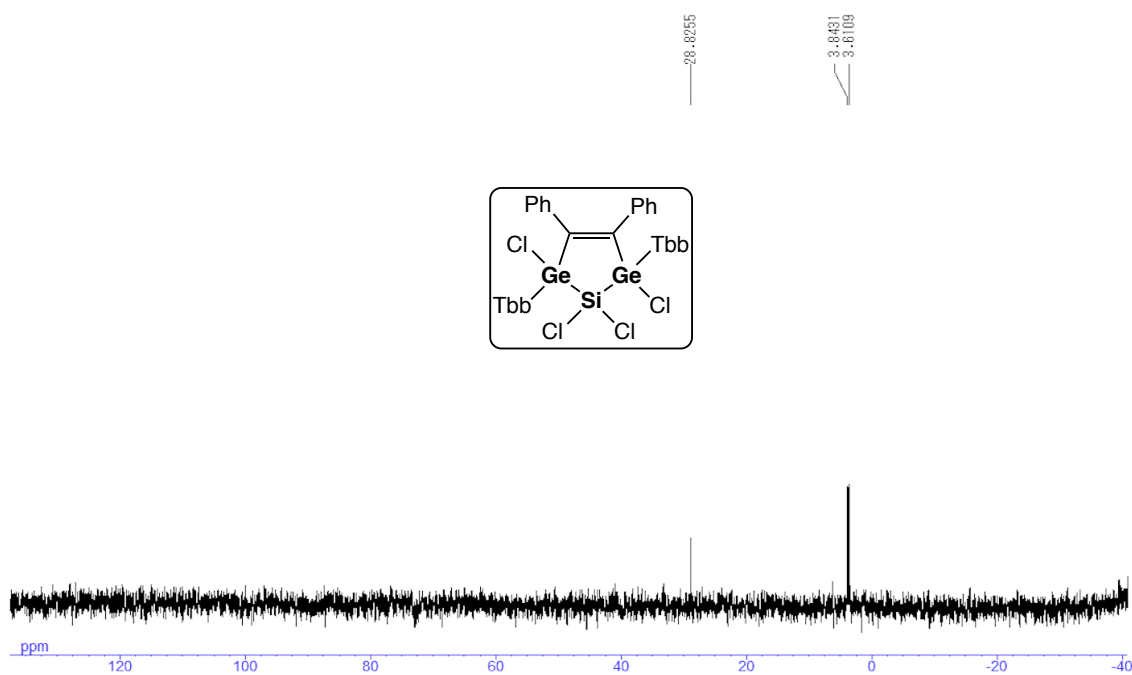


Figure S3. ²⁹Si NMR spectrum of **3** in C₆D₆.

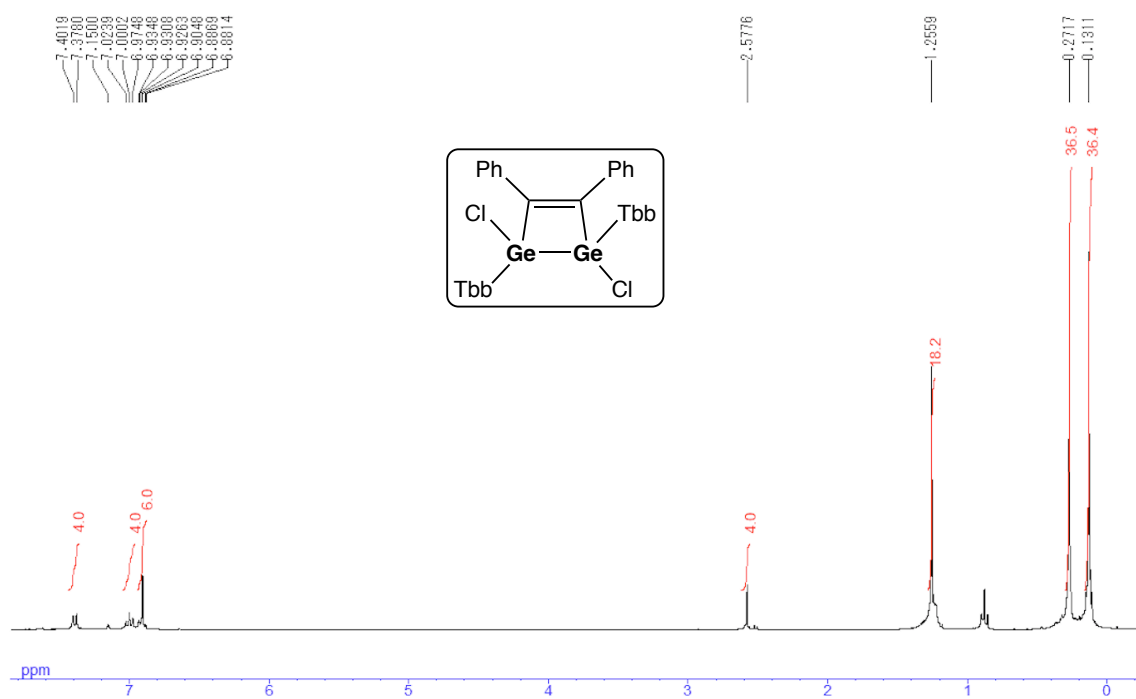


Figure S4. ¹H NMR spectrum of **5** in C₆D₆.

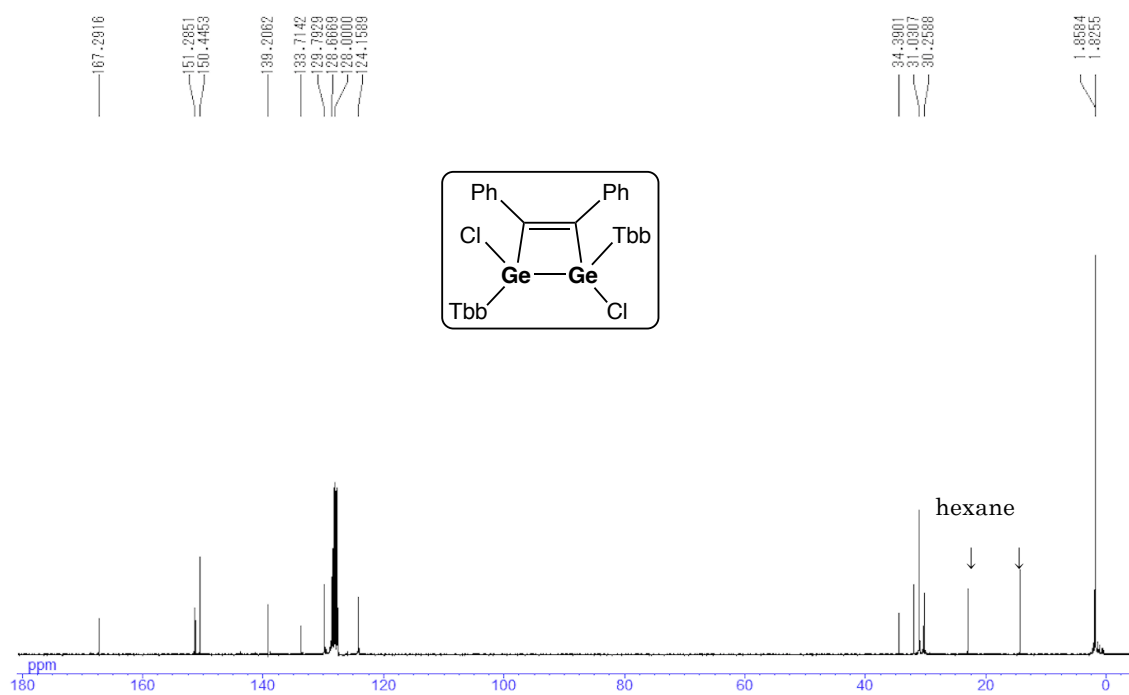


Figure S5. ^{13}C NMR spectrum of **5** in C_6D_6 .