

Activity of Platinum-Based Cathode Electrocatalysts in Oxygen Redaction for Proton-Exchange Membrane Fuel Cells: Influence of the Ionomer Content

Anastasia Alekseenko ¹, Sergey Belenov ^{1*}, Dmitriy Mauer ¹, Elizaveta Moguchikh ¹, Irina Falina ², Julia Bayan ¹, Ilya Pankov ³, Danil Alekseenko ¹, Vladimir Guterman ¹

Supporting Information

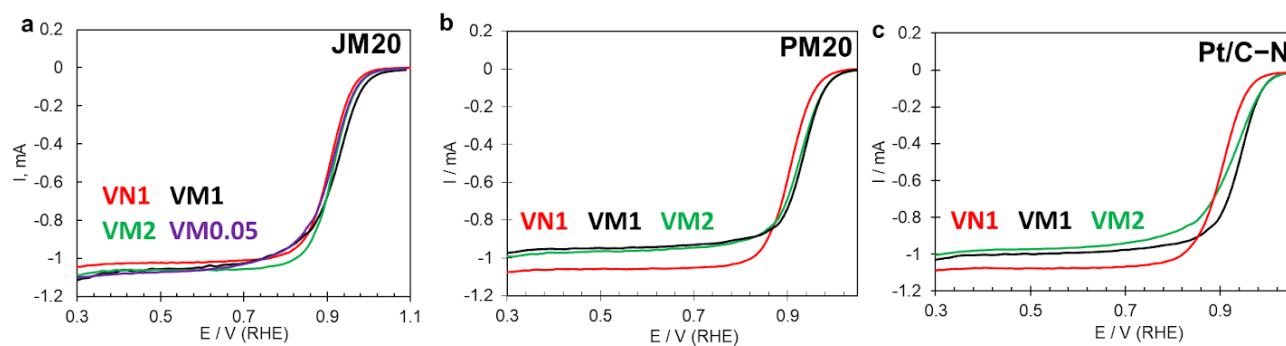


Figure S1 LSV curves: JM20 (a), PM20 (b) and Pt/C-N (c). Rotation speed of RDE is 1600 rpm. 0.1 M HClO₄.

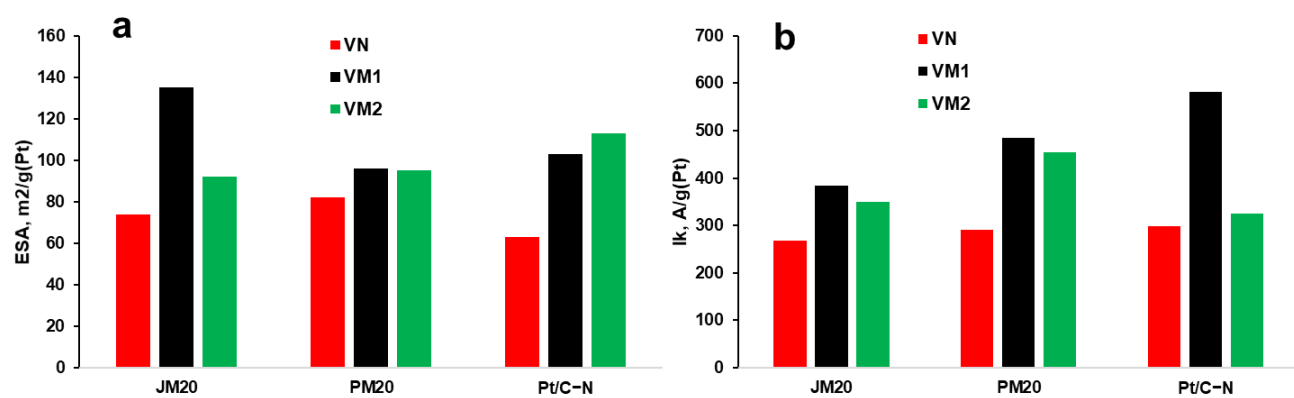


Figure S2 Influence ionomer content to ESA value (a) and ORR activity (kinetic current) for different Pt-based catalysts: JM20, PM20 and Pt/C-N.