

Two Birds with One Stone: Ammonium-Induced Carbon Nanotube Structure and Low-Crystalline Cobalt Nanoparticles Enabling High Performance of Lithium-Sulfur Batteries

Qi Tan ¹, Hongliang Liu ², Guozhu Liang ², Kaigui Jiang ², Hangxuan Xie ³, Weijie Si ⁴, Jiajv Lin ^{4,*} and Xiongwu Kang ^{4,*}

¹ Guangdong Electric Power Development Co., Ltd., Guangzhou 510080, China

² Guangdong Zhuhai Jinwan Power Co., Ltd., Zhuhai 519000, China

³ China Southern Power Grid Technology Co., Ltd., Guangzhou 510080, China

⁴ New Energy Research Institute, School of Environment and Energy, South China University of Technology, Guangzhou 510006, China

* Correspondence: linjiaju@dg.gd.csg.cn (J.L.); esxkang@scut.edu.cn (X.K.)

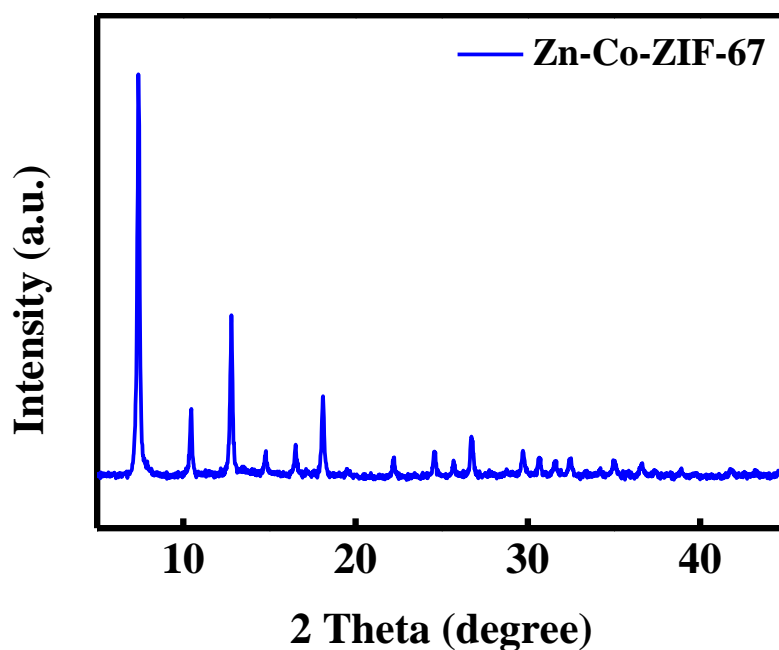


Fig.S1 The XRD pattern of Zn-Co-ZIF.

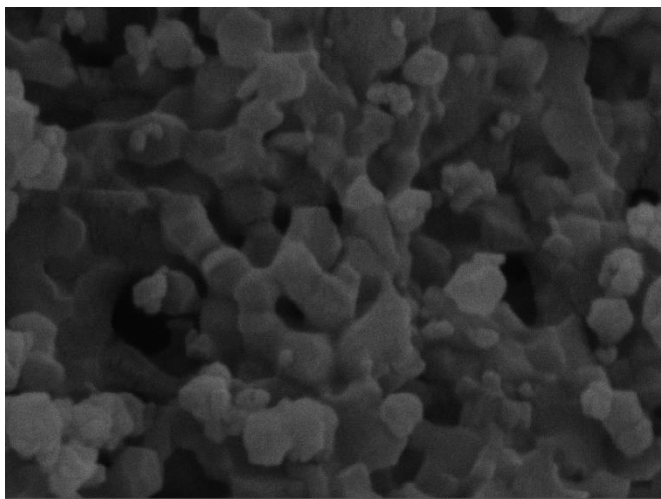


Fig.S2 SEM of Zn-Co-ZIF.

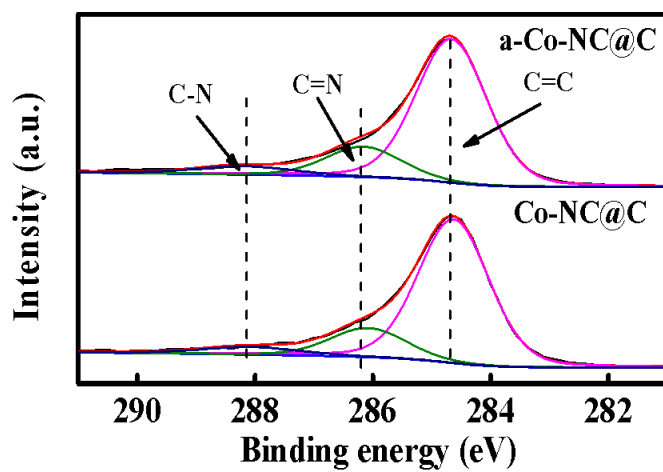


Fig.S3 High resolution XPS spectra of C 1s of Co-NC, Co-NC@C and a-Co-NC@C.

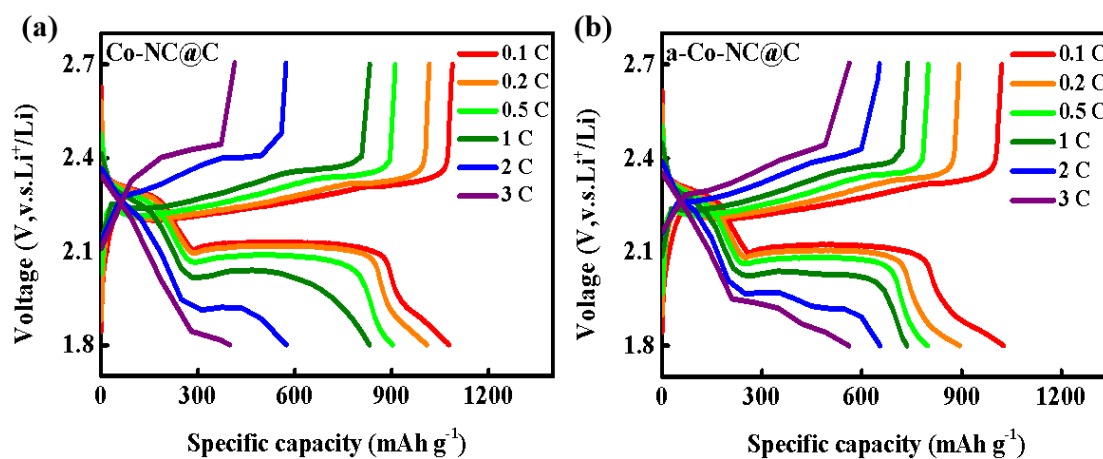


Fig.S4 Charge/discharge profiles at various rates of the cell with cathode of (a) Co-NC@C; (b) a-Co-NC@C.

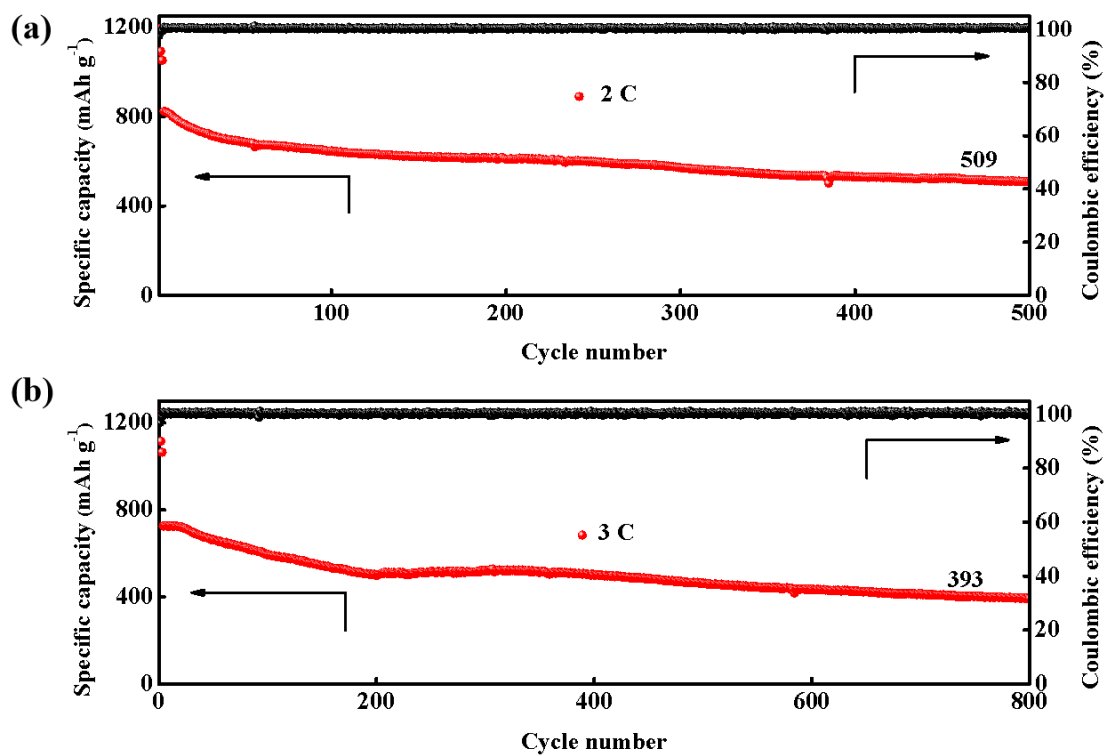


Fig.S5 Long term cycling performance at (a) 1 C; (b) 2 C of a-Co-NC@C/S electrode.

Table S1. Current density values at different redox peaks and polarization voltages of composite cathodes of Co-NC@C and a-Co-NC@C.

Sample	Current density				Polarization(mV) for peak A&C
	Peak A	Peak B	Peak C	Peak D	
Co-NC@C	−0.442	−0.990	1.522	1.688	0.354
a-Co-NC@C	−0.620	−2.062	2.097	1.625	0.270