

Article

Influence of season and habitat on the essential oils composition, allelopathy, and antioxidant activities of *Artemisia monosperma* Delile

Ahmed M. Abd-ElGawad ^{1,*}, Abdulaziz M. Assaeed ¹, Saud L. Al-Rowaily ¹, Mohamed S. Alshahri ¹, Giuliano Bonanomi ² and Abdelsamed I. Elshamy ³

¹ Plant Production Department, College of Food & Agriculture Sciences, King Saud University, P.O. Box 2460 Ri-yadh 11451, Saudi Arabia

² Department of Agriculture, University of Naples Federico II, Portici, 80055 Naples, Italy

³ Department of Natural Compounds Chemistry, National Research Centre, 33 El Bohouth St., Dokki, Giza, 12622, Egypt

* Correspondence: aibrahim2@ksu.edu.sa (A.M.A.-E.); +966-599458396.

Supplementary Materials

Citation: Abd-ElGawad, A.M.; Assaeed, A.M.; Al-Rowaily, S.L.; Alshahri, M.S.; Bonanomi, G.; Elshamy, A.I. Influence of Season and Habitat on the Essential Oils Composition, Allelopathy, and Antioxidant Activities of *Artemisia monosperma* Delile. *Separations* **2023**, *10*, 263. <https://doi.org/10.3390/separations10040263>

Academic Editor: Paraskevas D. Tzanavaras

Received: 24 March 2023

Revised: 13 April 2023

Accepted: 15 April 2023

Published: 17 April 2023



Copyright: © 2023 by the authors. Licensee MDPI, Basel, Switzerland. This article is an open access article distributed under the terms and conditions of the Creative Commons Attribution (CC BY) license (<https://creativecommons.org/licenses/by/4.0/>).

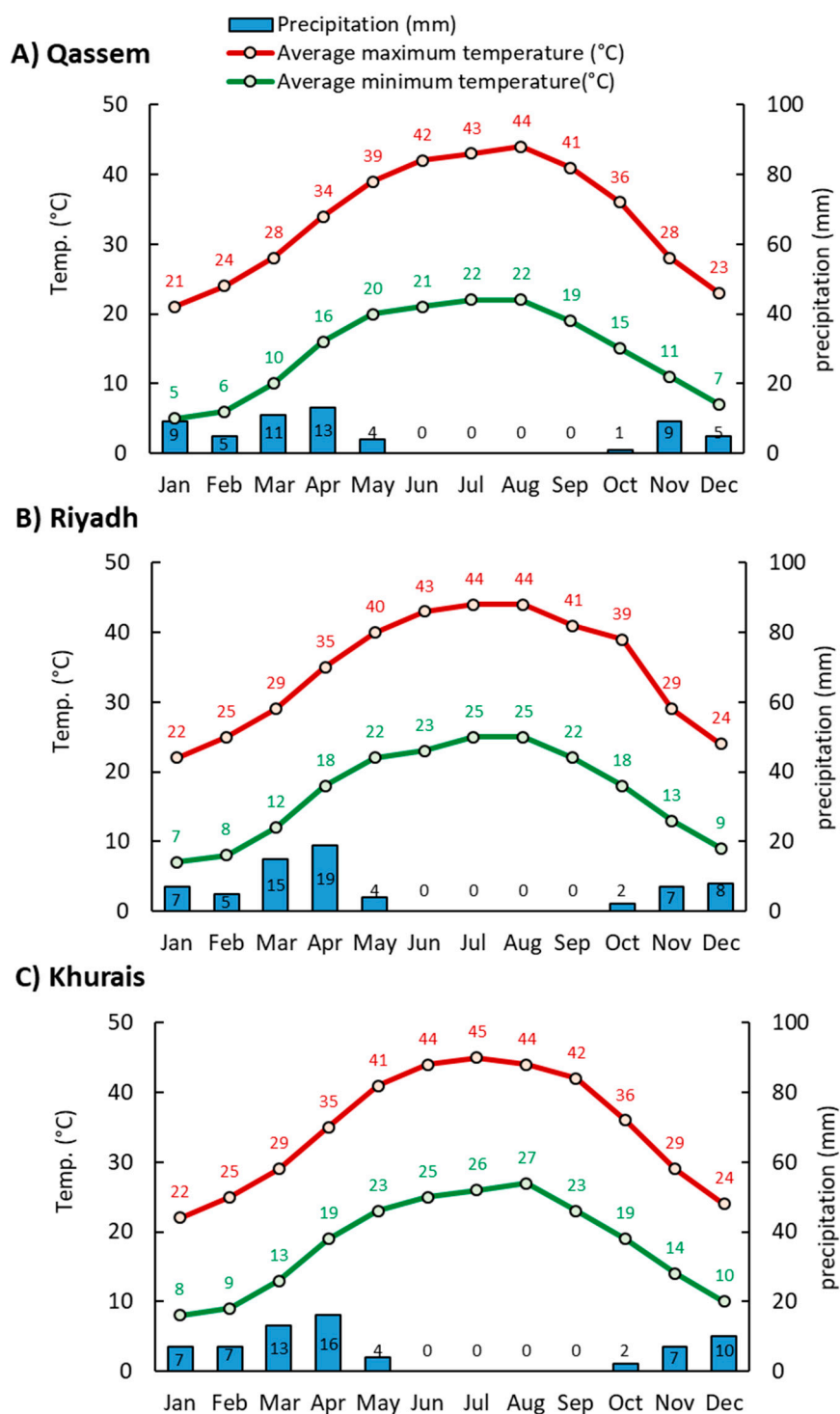


Figure S1. The climatic conditions of the three studied regions during the year of sampling. A) Qaseem represents the Ghat region, B) Riyadh represents the Thumamah, and C) Khurais represent the Giham region. The data was gathered from <https://www.meteoblue.com>.

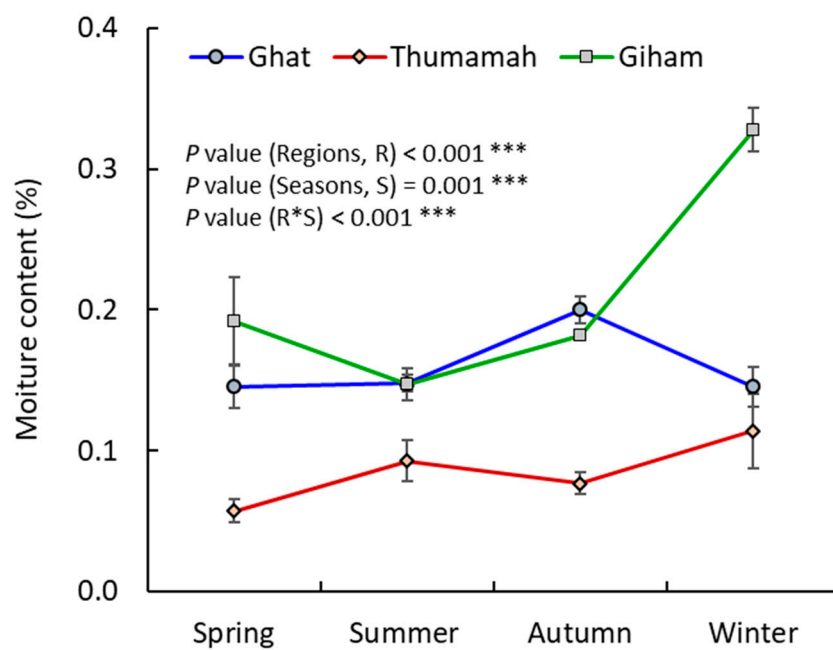


Figure S2. Soil moisture content of the soil under the *A. monosperma* during the four seasons from the three regions (Ghat, Thumamah, and Giham).

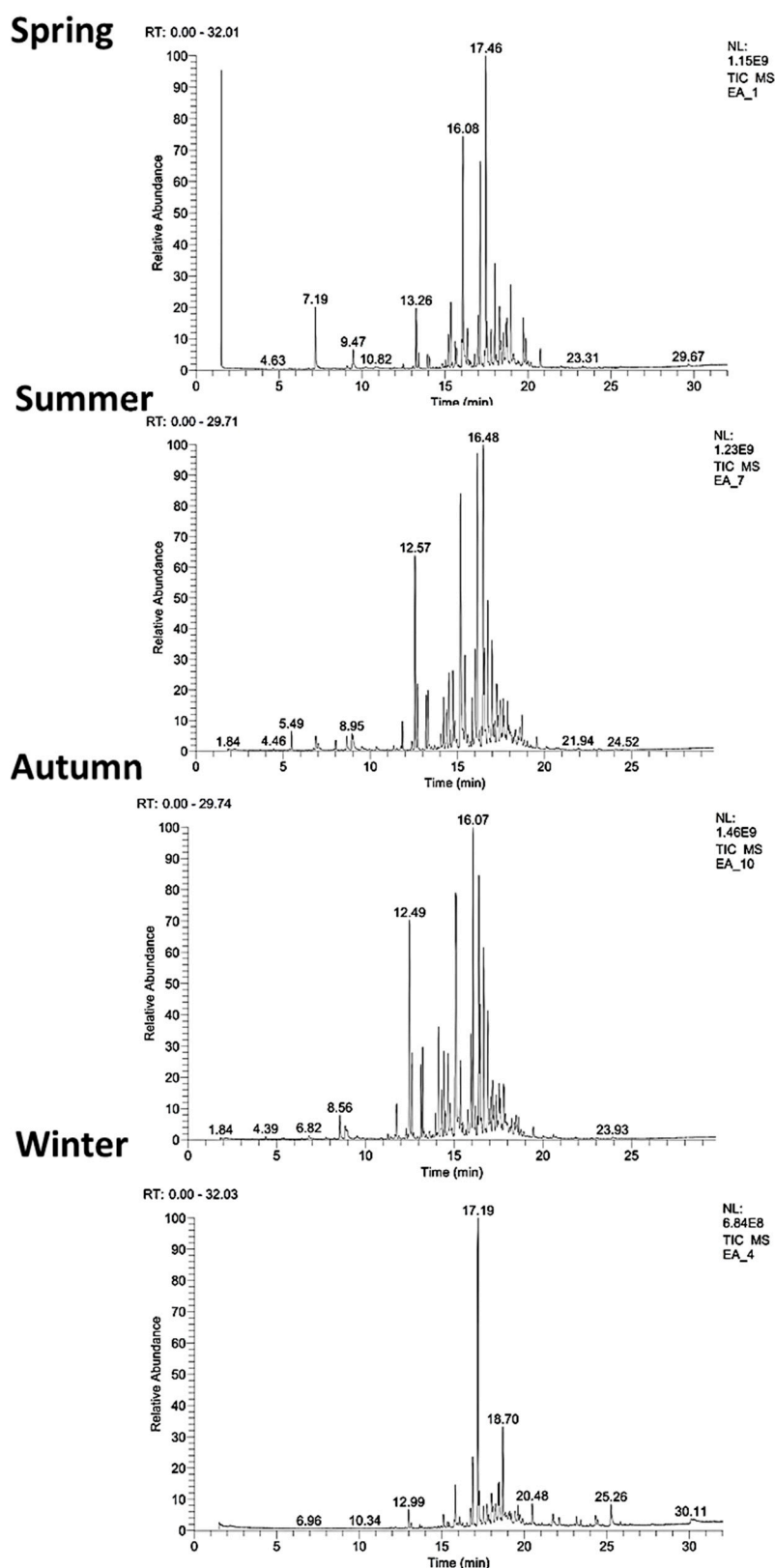


Figure S3. The chromatogram of the GC-MS analysis of *A. monosperma* EOs collected from the Ghat region during the four seasons (Spring, Summer, Autumn, and Winter).

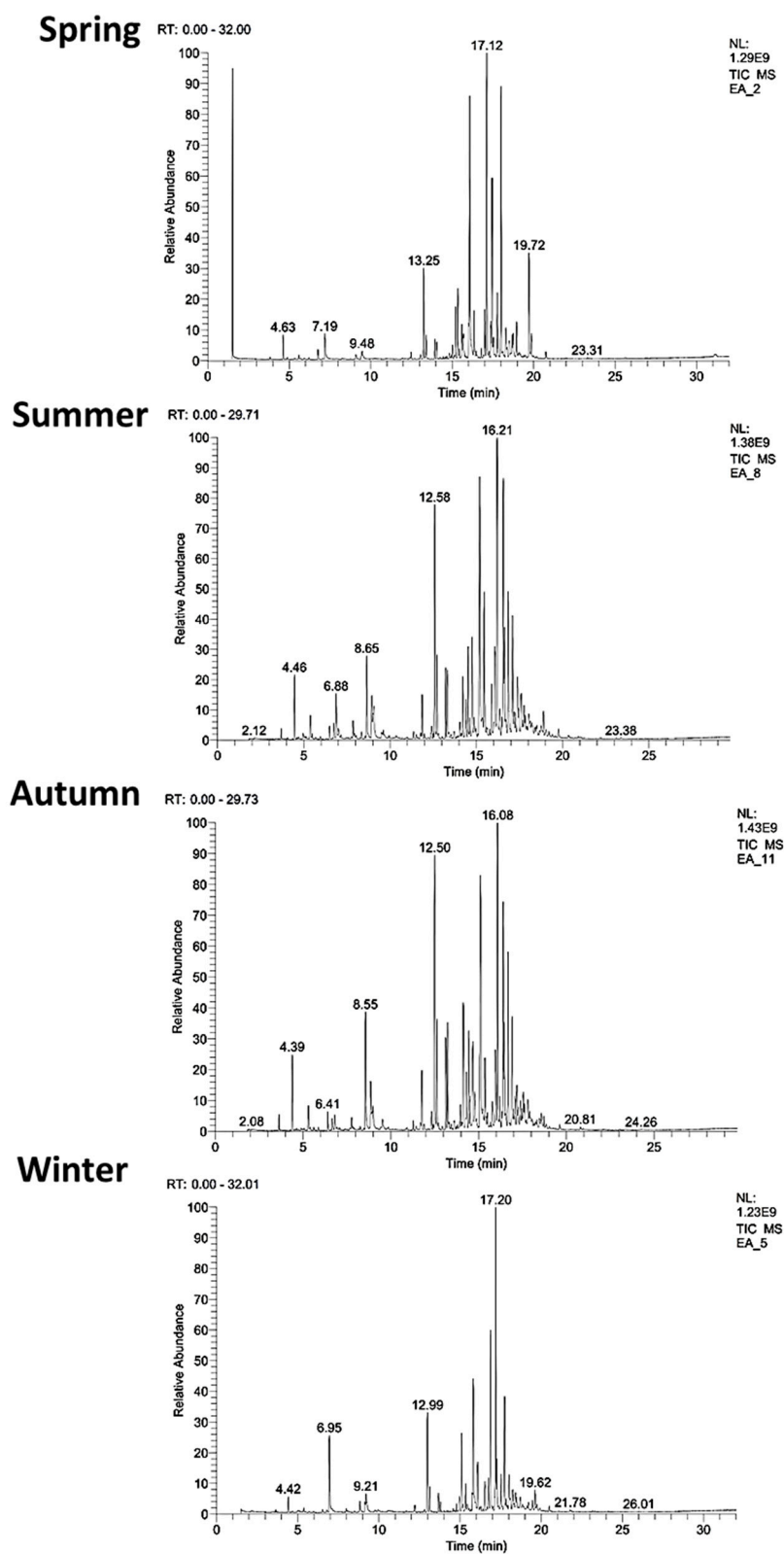


Figure S4. The chromatogram of the GC-MS analysis of *A. monosperma* EOs collected from the Thumamh region during the four seasons (Spring, Summer, Autumn, and Winter).

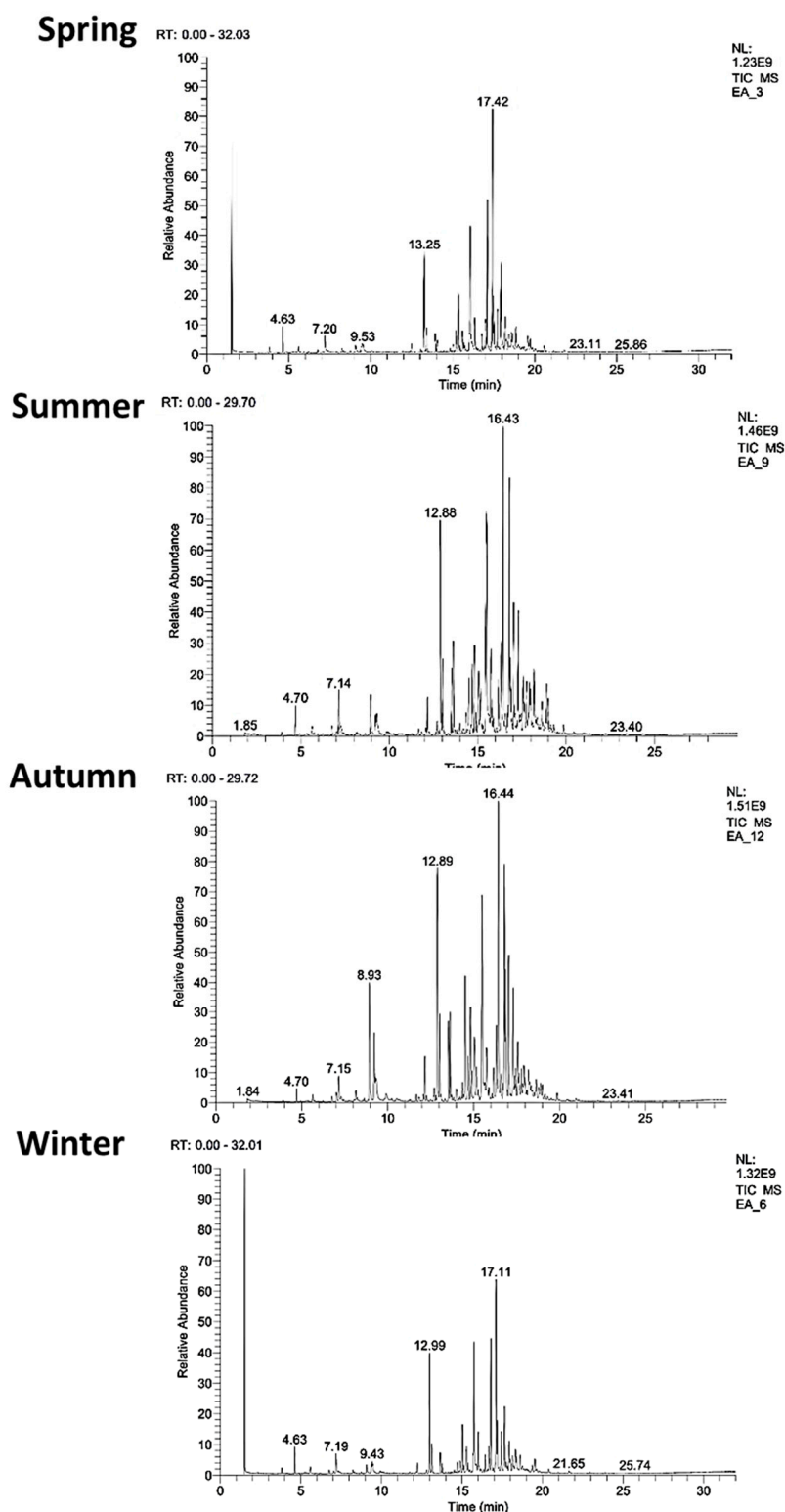


Figure S5. The chromatogram of the GC-MS analysis of *A. monosperma* EOs collected from the Giham region during the four seasons (Spring, Summer, Autumn, and Winter).

Disclaimer/Publisher's Note: The statements, opinions and data contained in all publications are solely those of the individual author(s) and contributor(s) and not of MDPI and/or the editor(s). MDPI and/or the editor(s) disclaim responsibility for any injury to people or property resulting from any ideas, methods, instructions or products referred to in the content.