

Figure S1: The LC/MS chromatograms of *Corylus avellana* gemmotherapy extract (Feb. 2019).

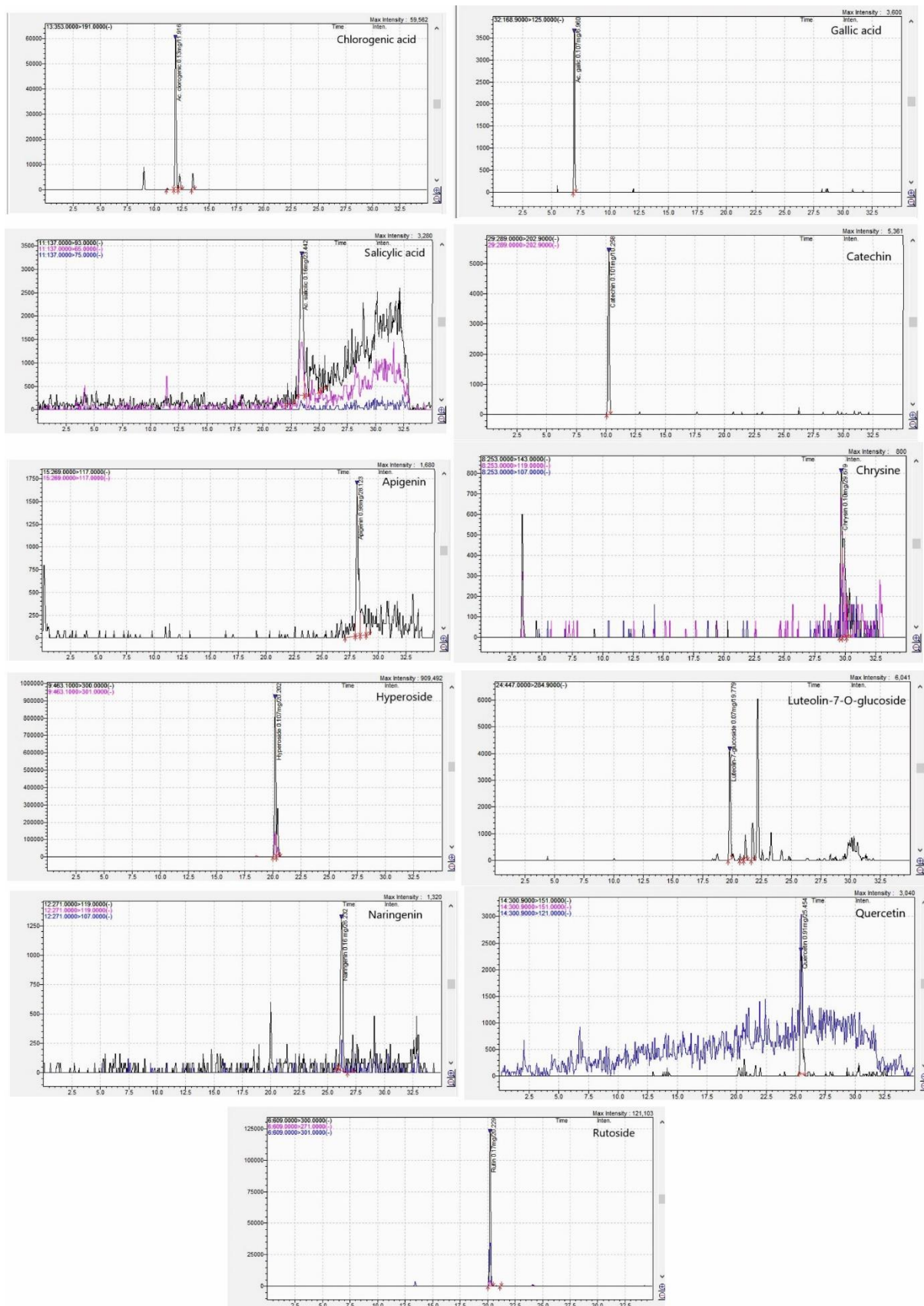


Figure S2: The LC/MS chromatograms of *Corylus avellana* gemmotherapy extract (Mar. 2019).

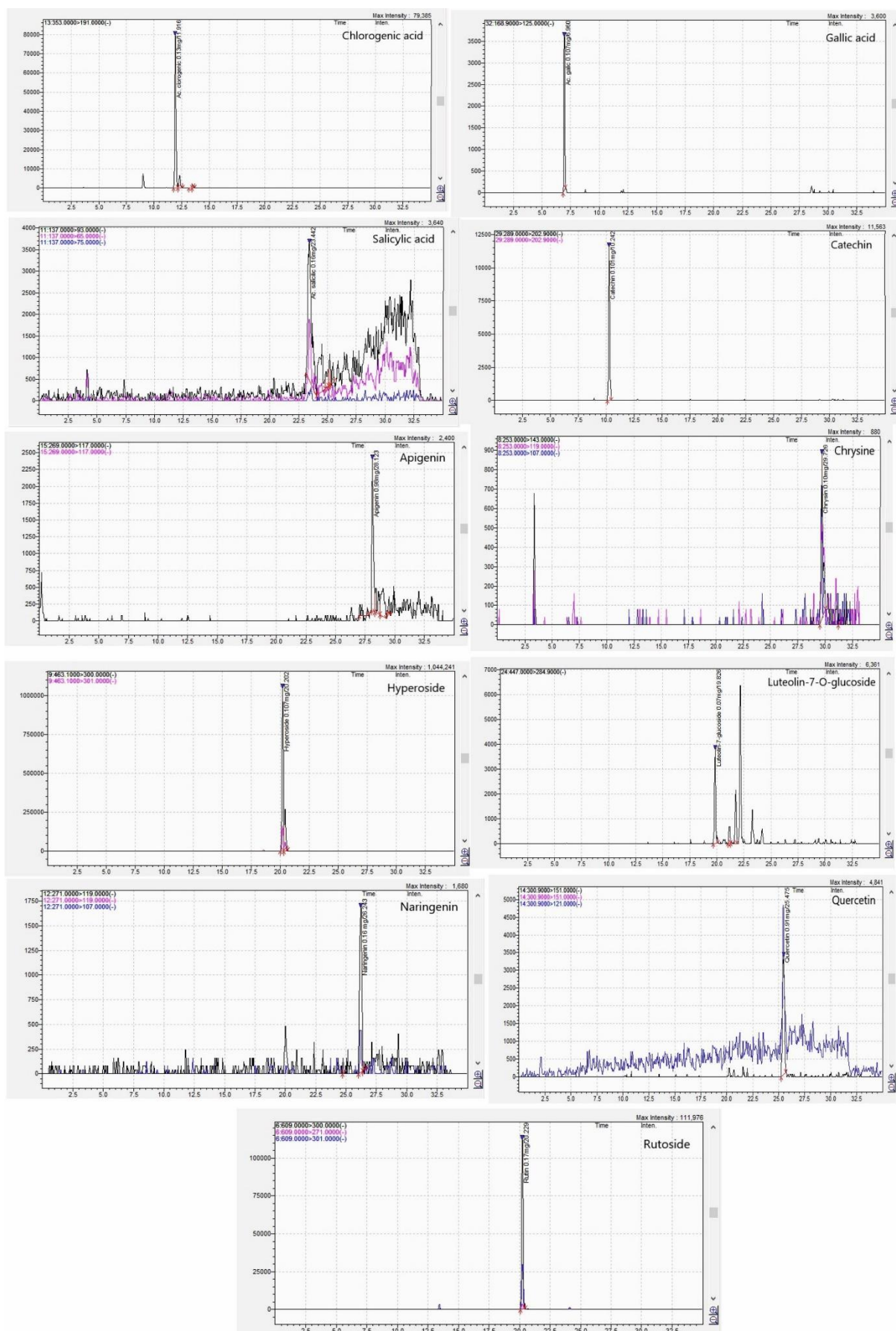


Figure S3: The LC/MS chromatograms of *Corylus avellana* gemmotherapy extract (Jan. 2020).

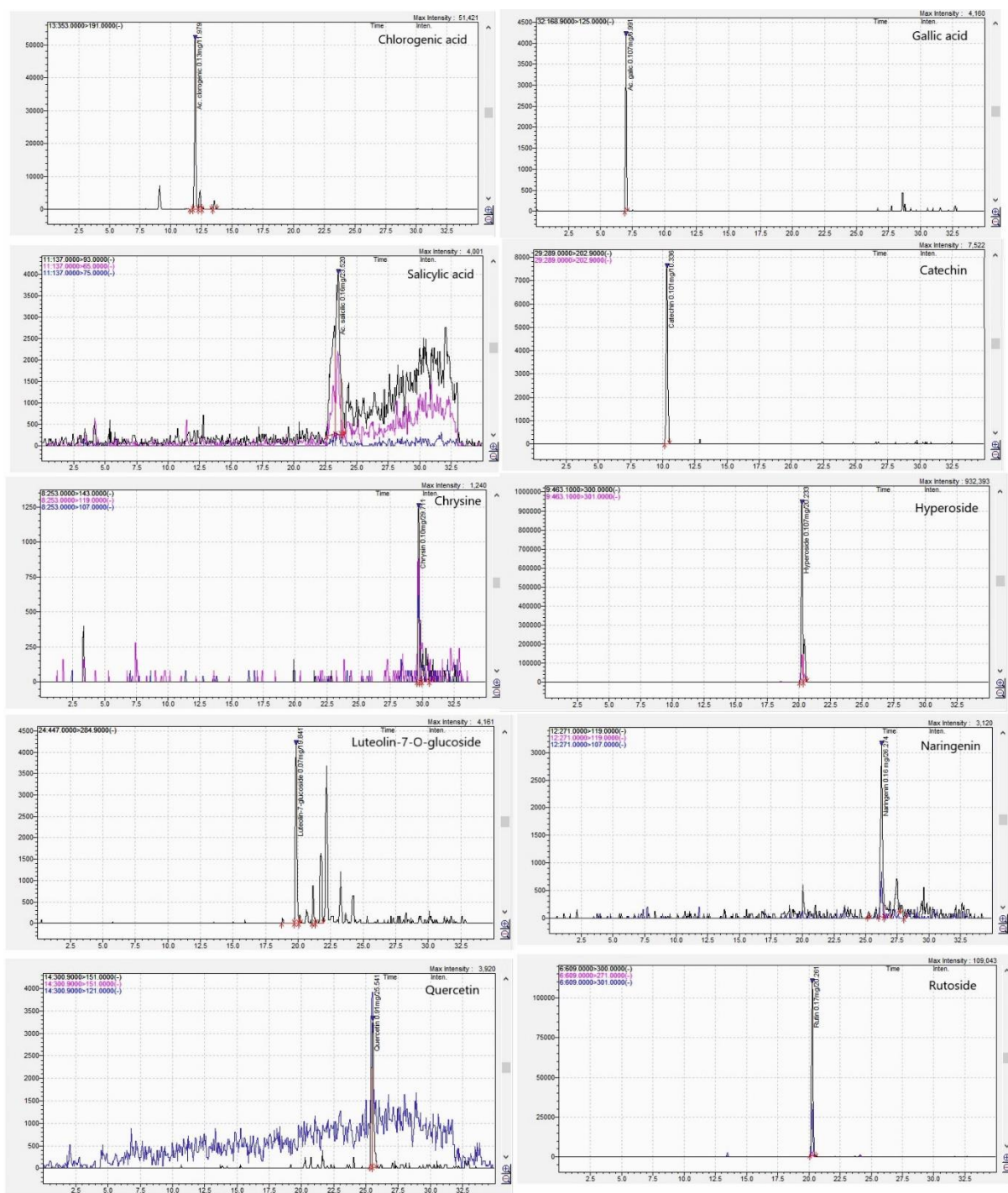


Figure S4: The LC/MS chromatograms of *Corylus avellana* gemmotherapy extract (Feb. 2020).

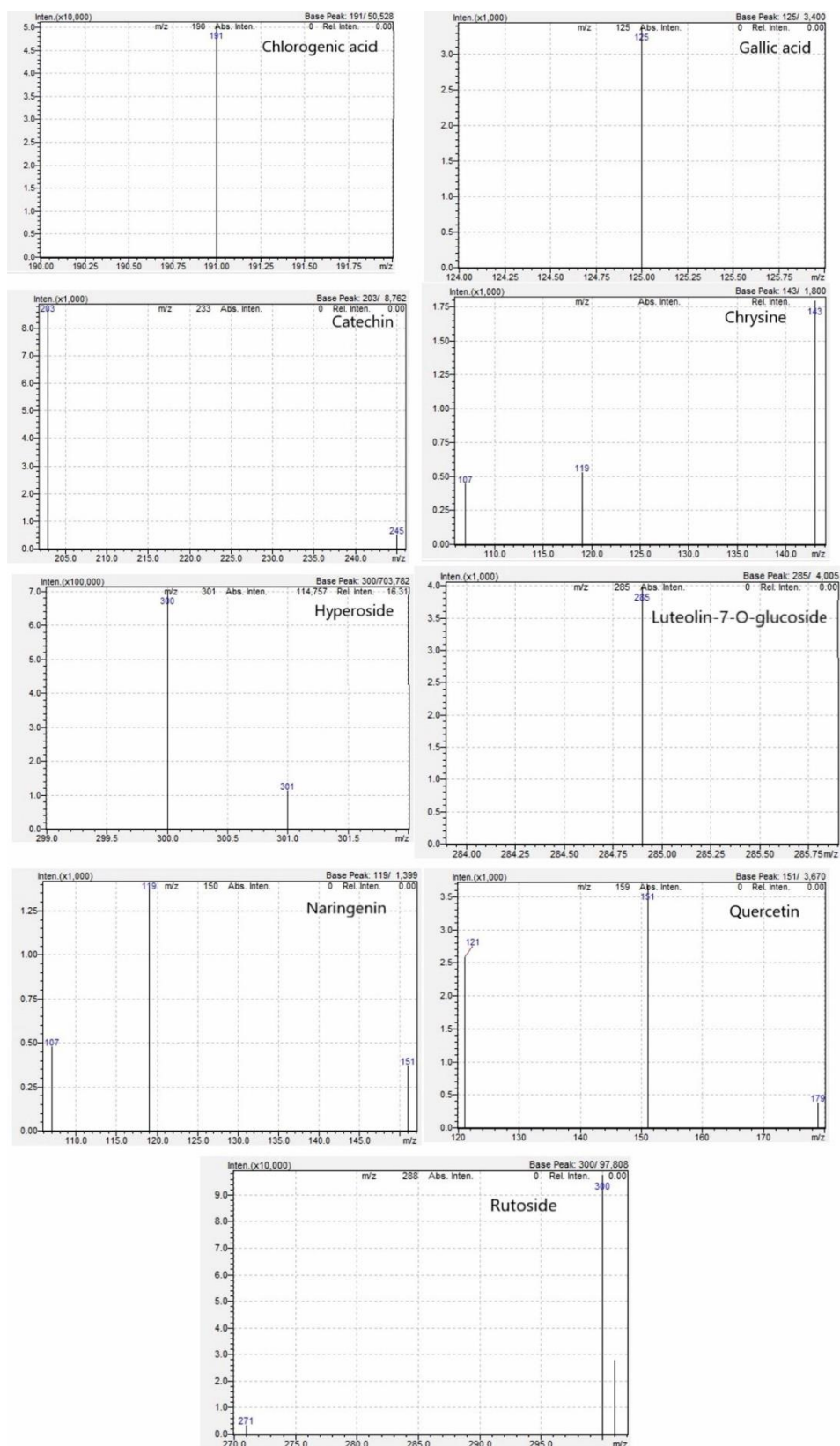


Figure S5: MS spectra of the identified compounds from *Corylus avellana* gemmotherapy extract (Feb. 2019).

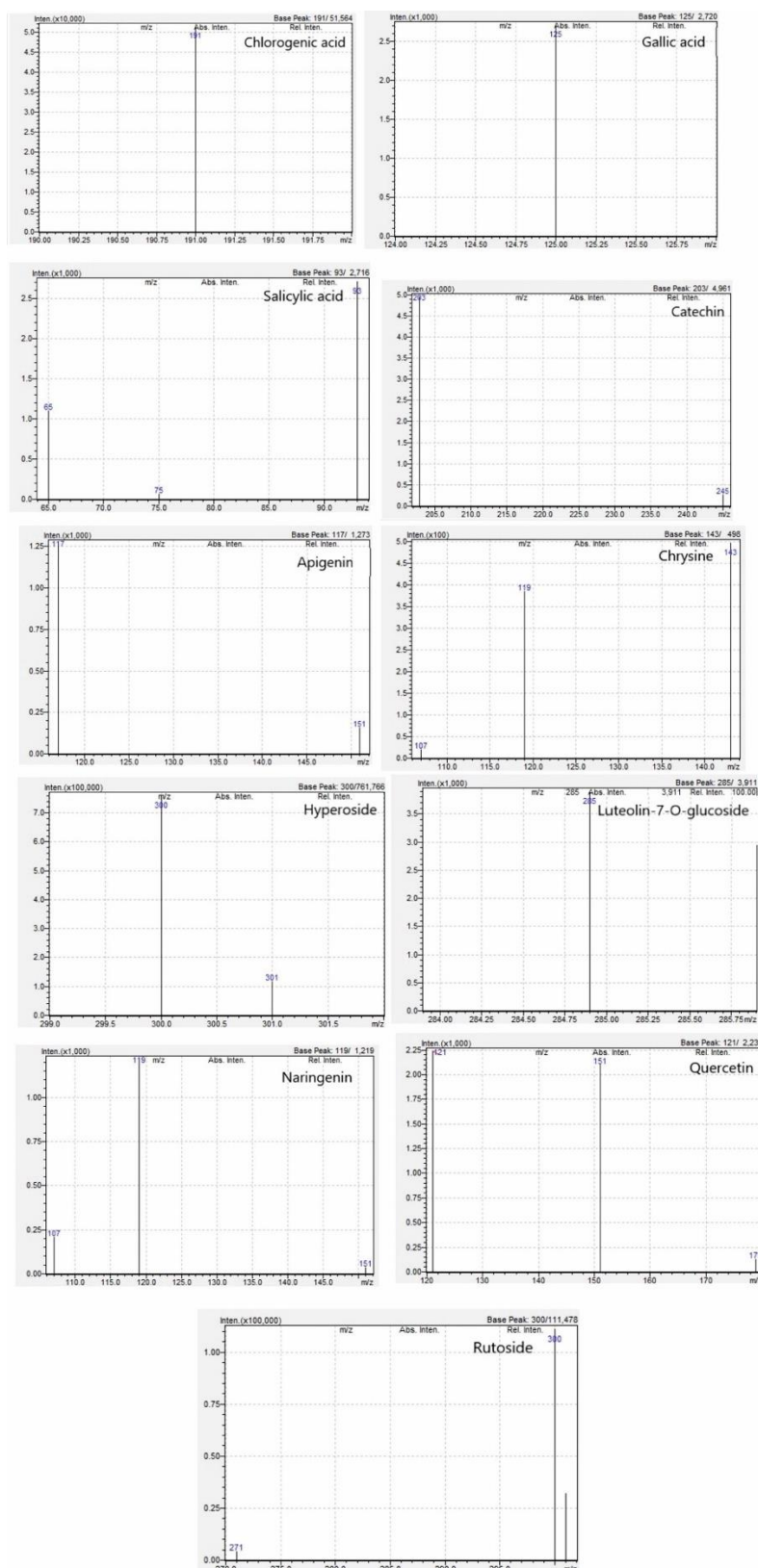


Figure S6: MS spectra of the identified compounds from *Corylus avellana* gemmotherapy extract (March 2019).

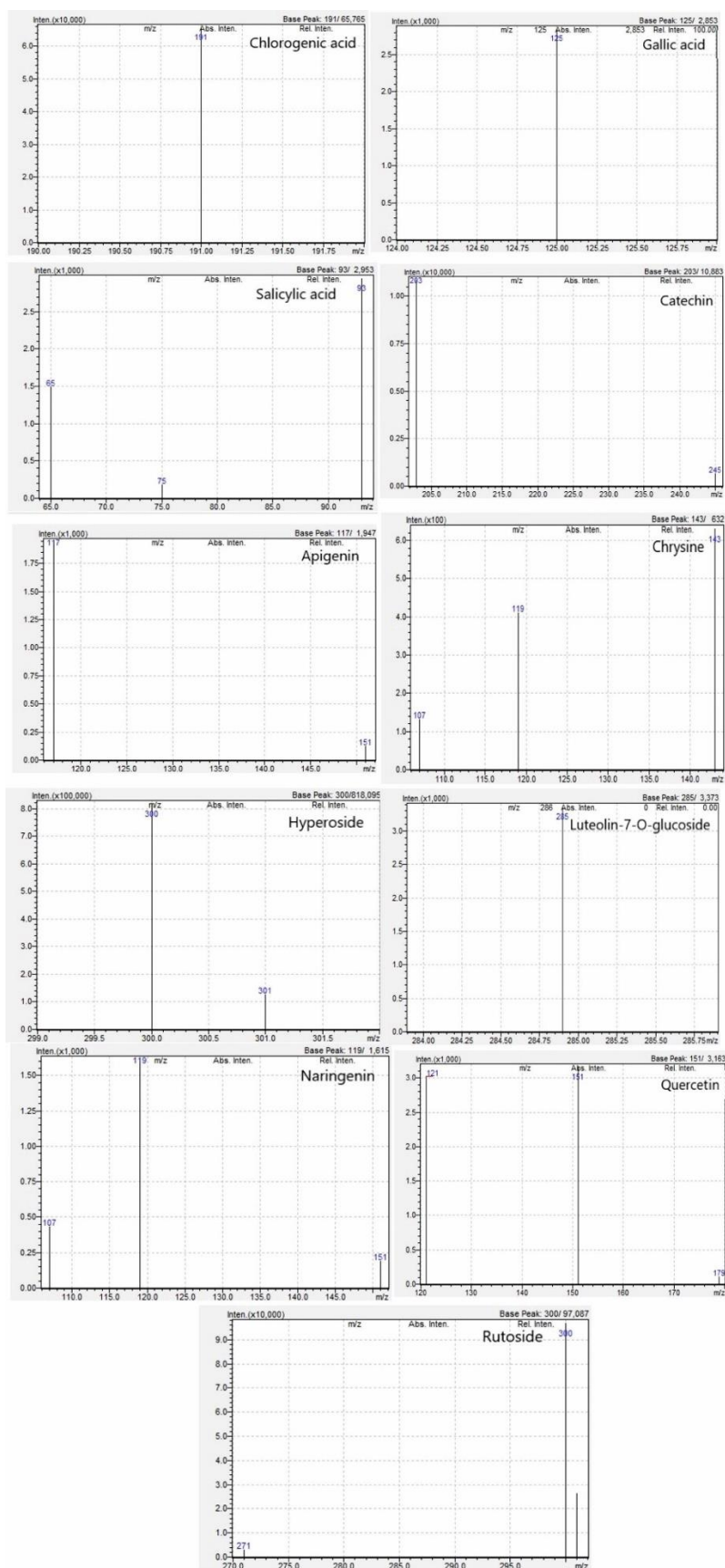


Figure S7: MS spectra of the identified compounds from *Corylus avellana* gemmotherapy extract (Jan. 2020).

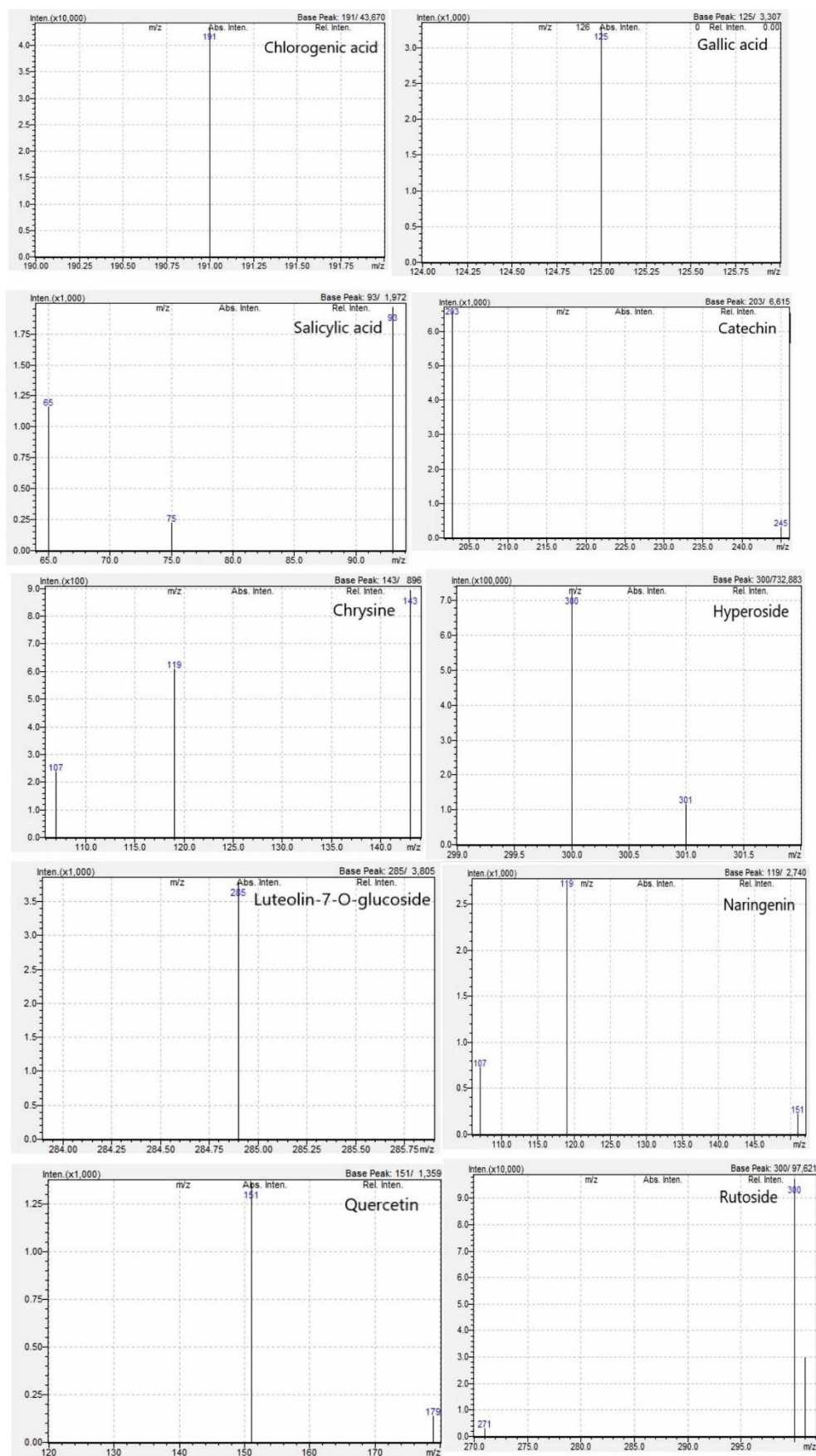


Figure S8: MS spectra of the identified compounds from *Corylus avellana* gemmotherapy extract (Feb. 2020).

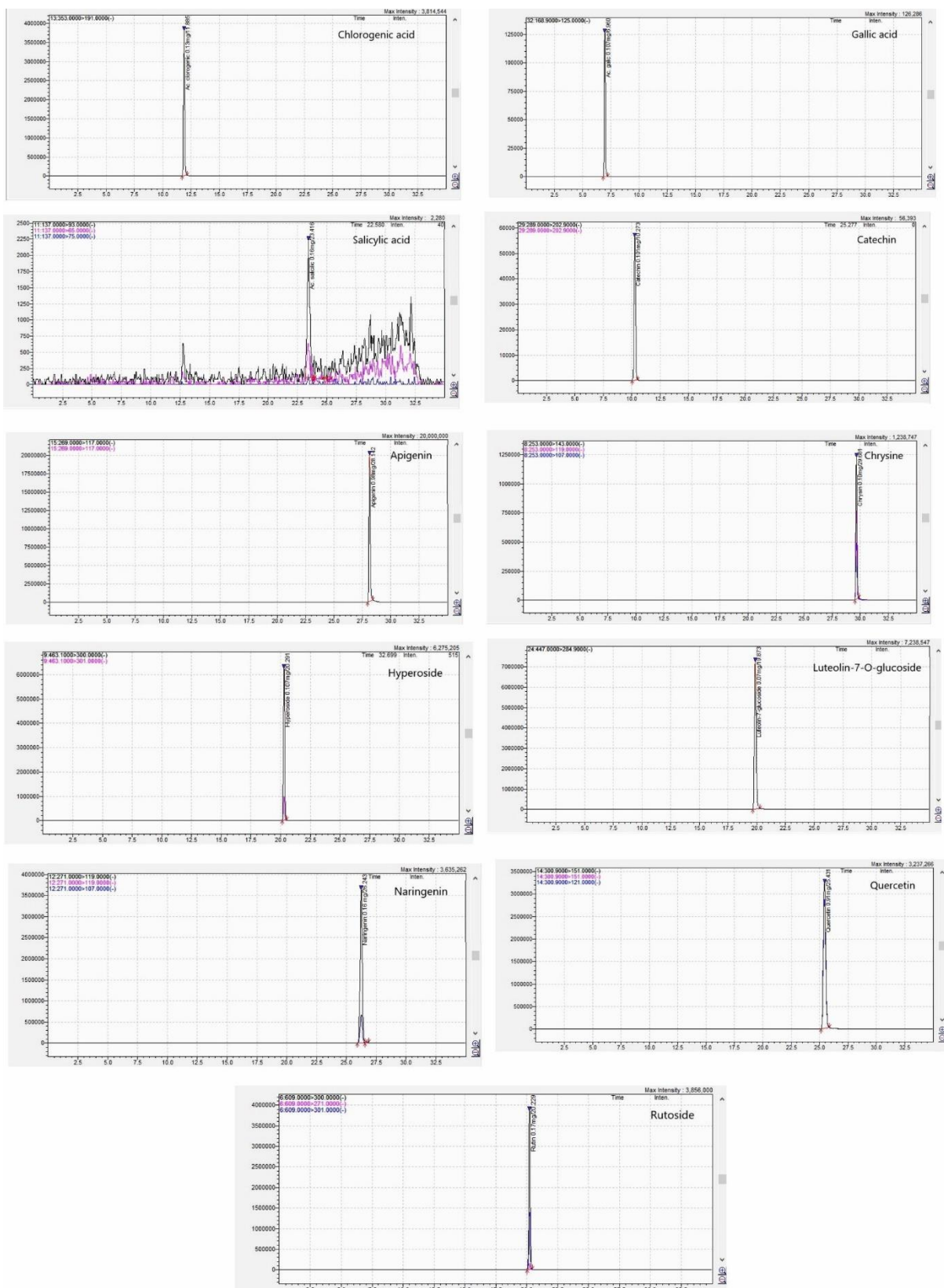


Figure S9: LC/MS chromatograms of the standards.

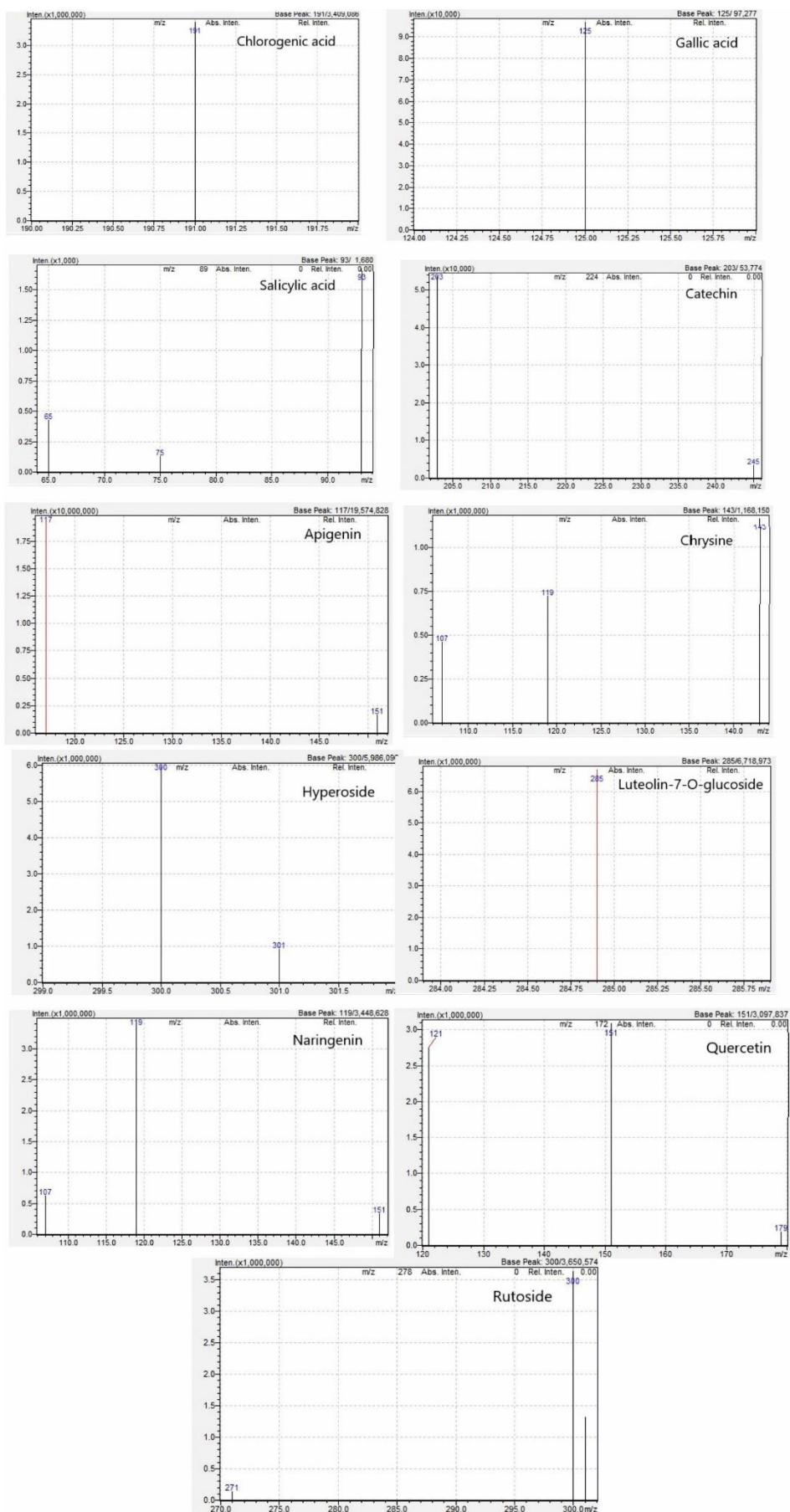


Figure S10: MS spectra of the standards.