

# Supplementary Table

Table S1. Clinical characteristics and serum MBL concentration of children with obesity and healthy controls (n =199)

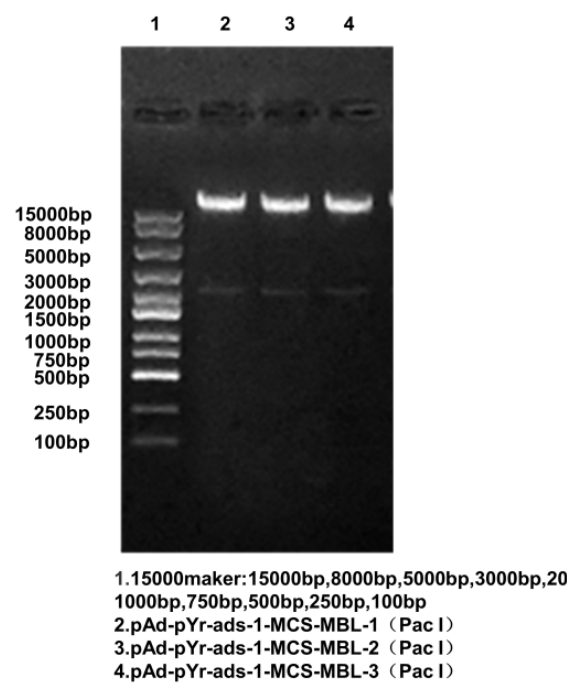
Characteristics	Overall	Control group	Obese group	P
Number	199	105	94	
Male (%)	65.69	58.10	73.74	
Age (y), mean (SD)	10.36(2.62)	10.35(2.51)	10.38(2.74)	0.56
BMI (kg/m2), median (IQR)	23.46(8.75)	19.06(2.82)	28.12(5.12)	<0.00
				1
ALT (U/L), median (IQR)	38.47(20.50)	21.54(13.00)	56.42(53.00)	<0.00
				1
AST (U/L), median (IQR)	33.79(14.00)	29.53(12.50)	38.31(23.00)	<0.00
				1
MBL (ng/ml), median (IQR)	927.60(908.59	909.69(523.51)	625.90(1151.85	<0.00
	)		)	1
SBP (mmHg), mean (SD)			149.99(14.38)	
DBP (mmHg), median (IQR)			66.00(11.00)	
TG (mmol/L), median (IQR)			1.12(0.64)	
TC (mmol/L), mean (SD)			4.21(0.47)	
LDL-C(mmol/L), mean (SD)			2.44(0.55)	
HDL-C(mmol/L), mean (SD)			1.24(0.25)	
Left cIMT(cm), median			0.06(0.02)	
(IQR)				

Right	cIMT(cm), median	0.06(0.01)
	(IQR)	
	HC (cm)	93.05(10.04)
	WC (cm)	95.60(10.42)

---

## Supplementary figures

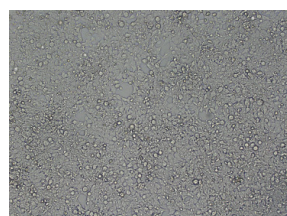
A



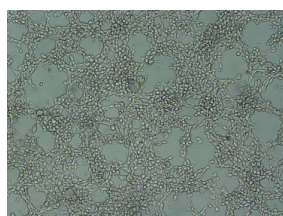
B



C



D



E

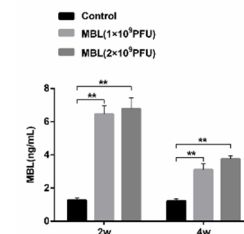
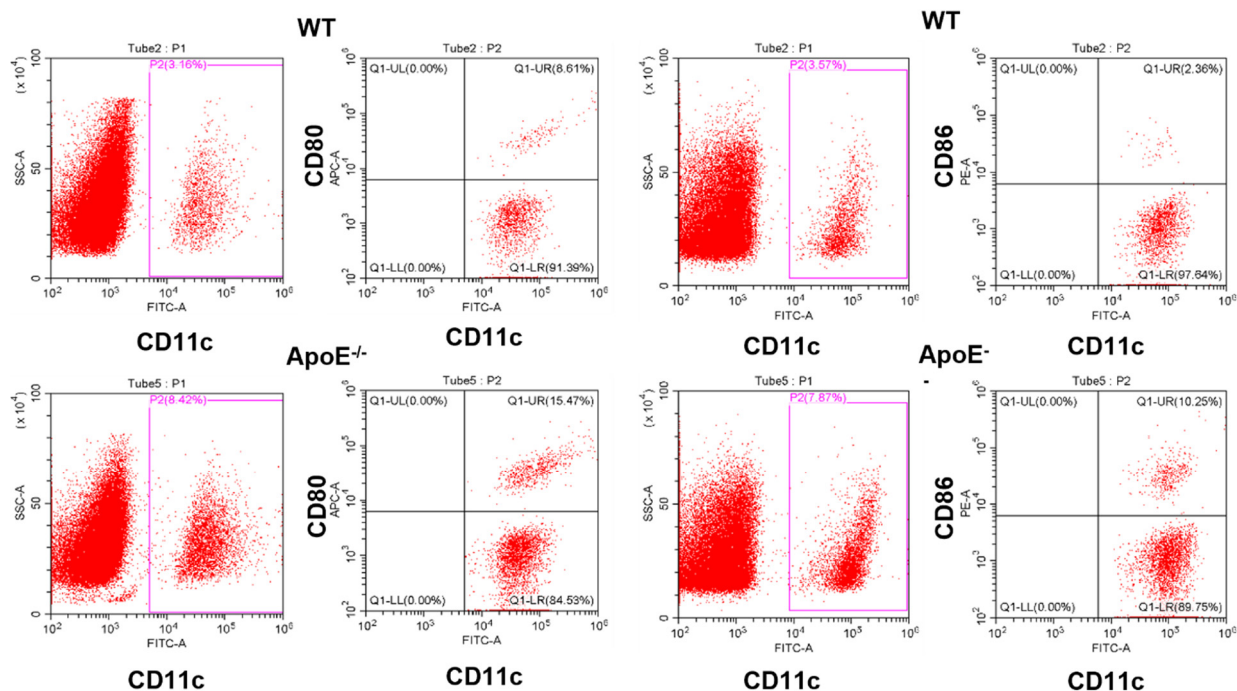
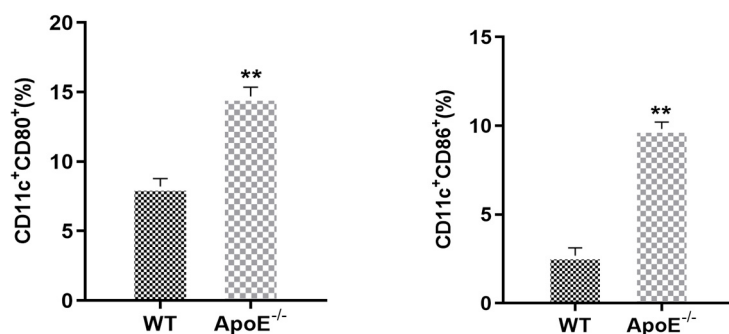


Figure S1 **Identification of adenovirus packaging.** A. Enzyme digestion identification map. B. Sequencing identification. C. White light image at 48 h after adenovirus infection. D. The white light image after amplification. E. MBL level in serum. \*\*Indicates  $p < 0.01$  vs. WT or control, # Indicates  $p < 0.01$  vs. ApoE<sup>-/-</sup>.

A

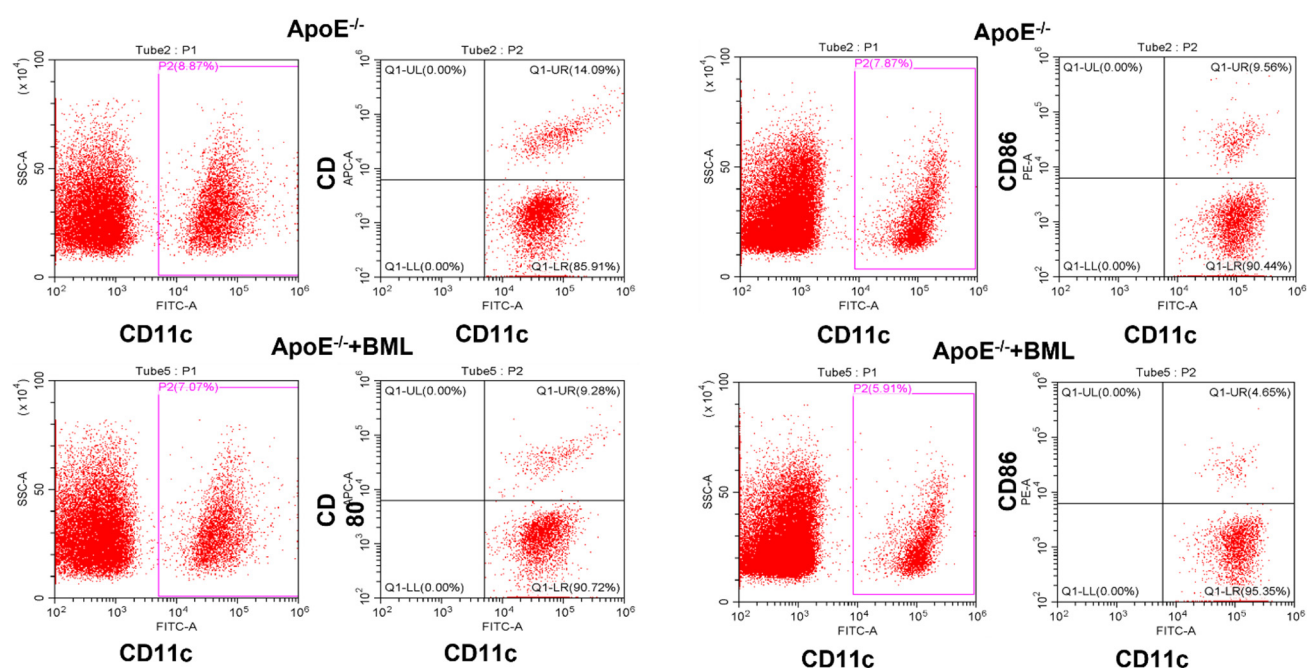


B

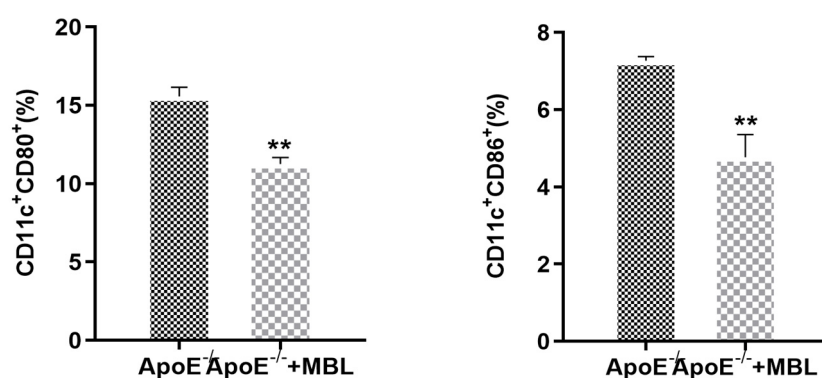


**Figure S2. DCs maturation rate in ApoE<sup>-/-</sup> and WT mice.** DCs were isolated from the spleen of ApoE<sup>-/-</sup> and WT mice after 16 weeks' HFD. A. Flow cytometry of DCs, B. Quantification of DCs: the proportion of CD11c<sup>+</sup>CD80<sup>+</sup> and CD11c<sup>+</sup>CD86<sup>+</sup> in ApoE<sup>-/-</sup> mice were significantly higher than that of WT mice. Note: \*\* p < 0.01.

A



B



**Figure S3. DCs maturation rate in MBL transfected  $ApoE^{-/-}$  and  $ApoE^{-/-}$  mice.** DCs were isolated from the spleen of  $ApoE^{-/-}$  and WT mice after 16 weeks' HFD. A. Flow cytometry of DCs, B. Quantification of DCs: the proportion of CD11c<sup>+</sup>CD80<sup>+</sup> and CD11c<sup>+</sup>CD86<sup>+</sup> were significantly decreased in MBL-adenovirus compared to blank-adenovirus injected  $ApoE^{-/-}$  mice. Note: \*\*  $p < 0.01$ .