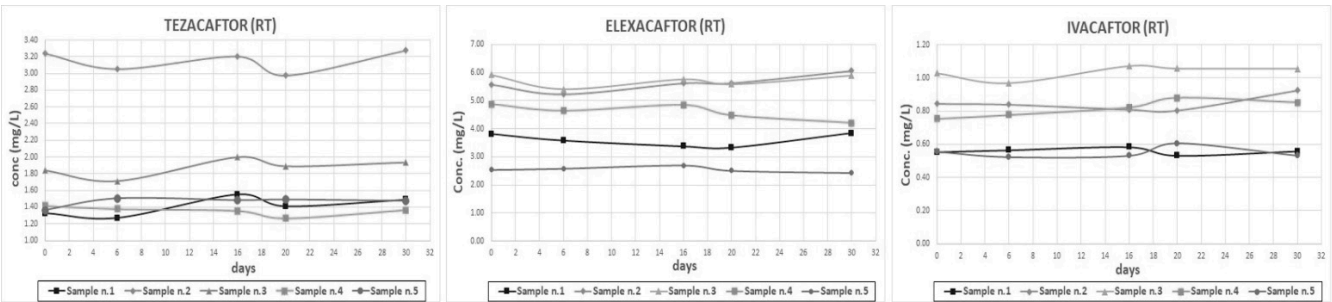
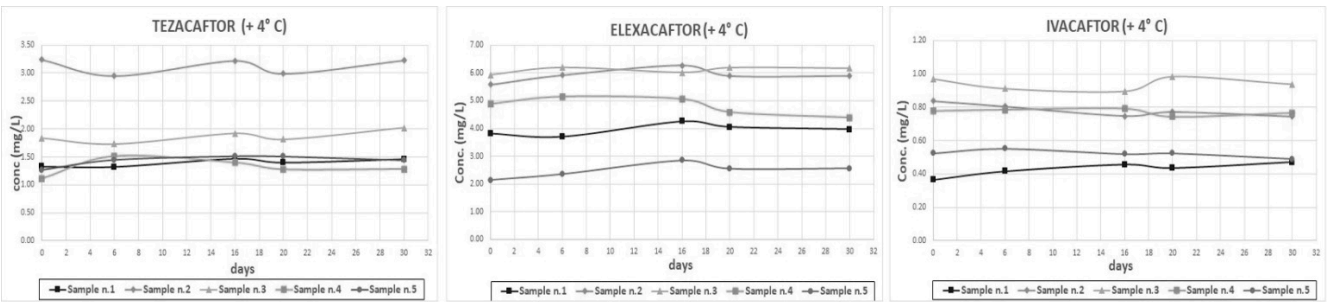


SUPPLEMENTARY MATERIALS

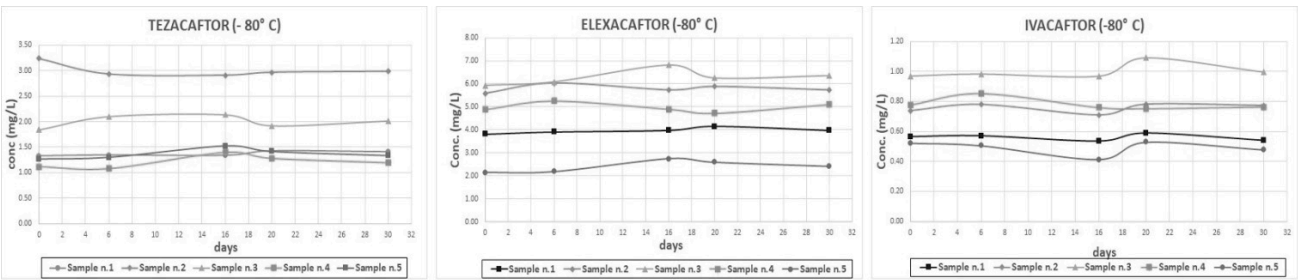
Supplementary Figure S1: Stability at room temperature (RT) of Tezacafor, Elexacaftor and Ivacaftor on five real samples (mg/L).



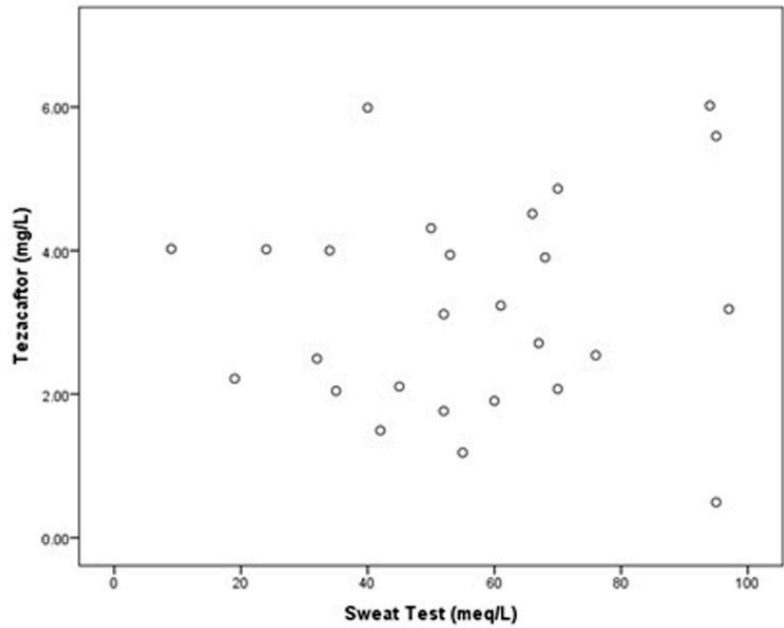
Supplementary Figure S2: Stability at + 4°C of Tezacafor, Elexacaftor and Ivacaftor on five real samples (mg/L).



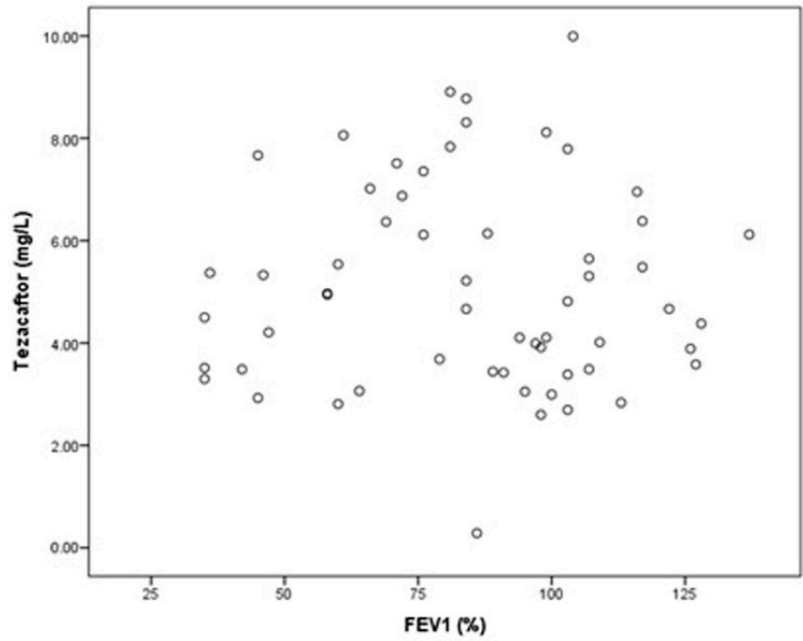
Supplementary Figure S3: Stability at -80°C of Tezacafor, Elexacaftor and Ivacaftor on five real samples (mg/L).



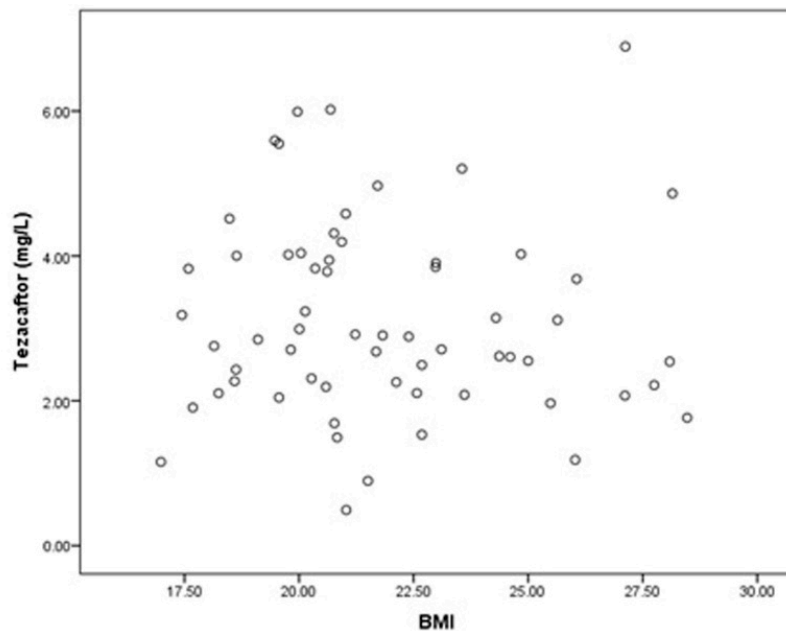
Supplementary Figure S4: The scatter plot between Cthrough of TEZ and sweat test.



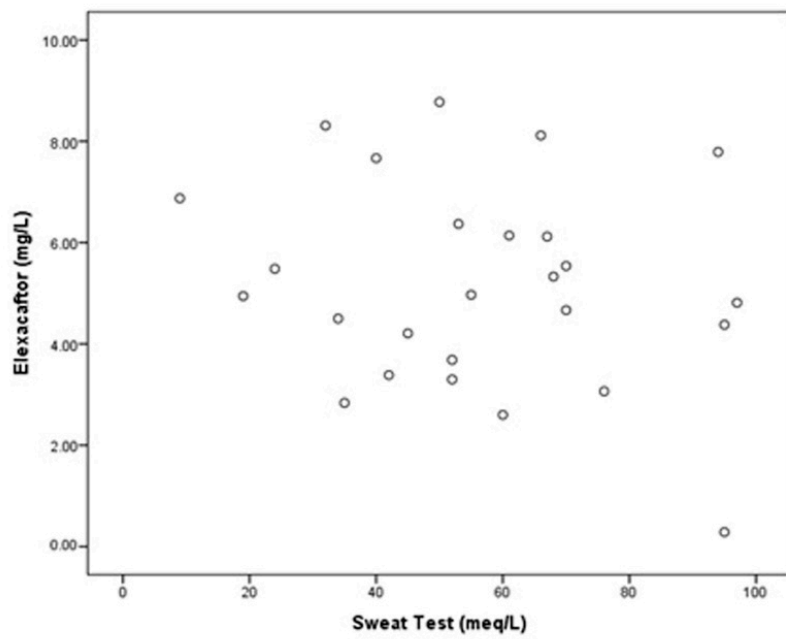
Supplementary Figure S5: The scatter plot between Cthrough of TEZ and FEV1 (%).



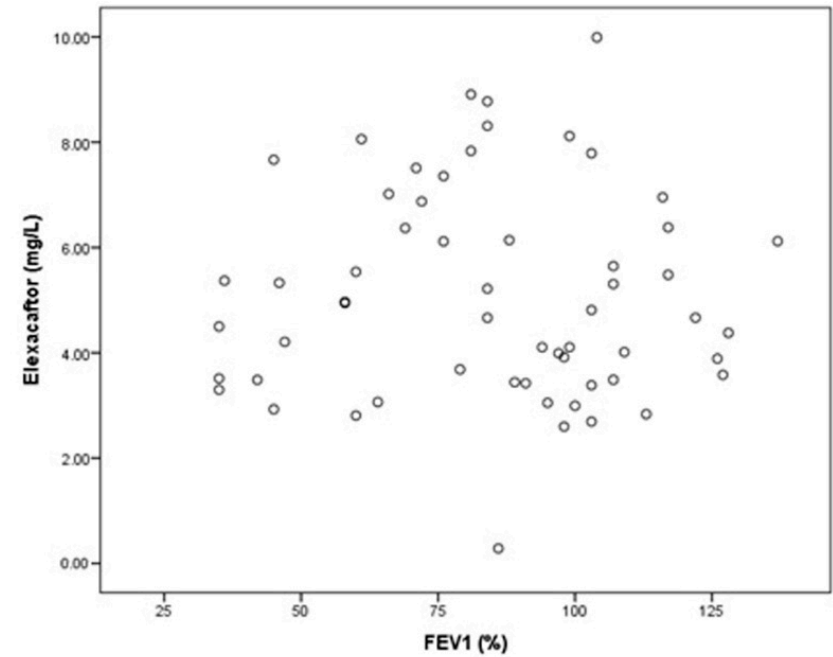
Supplementary Figure S6: The scatter plot between Cthrough of TEZ and BMI.



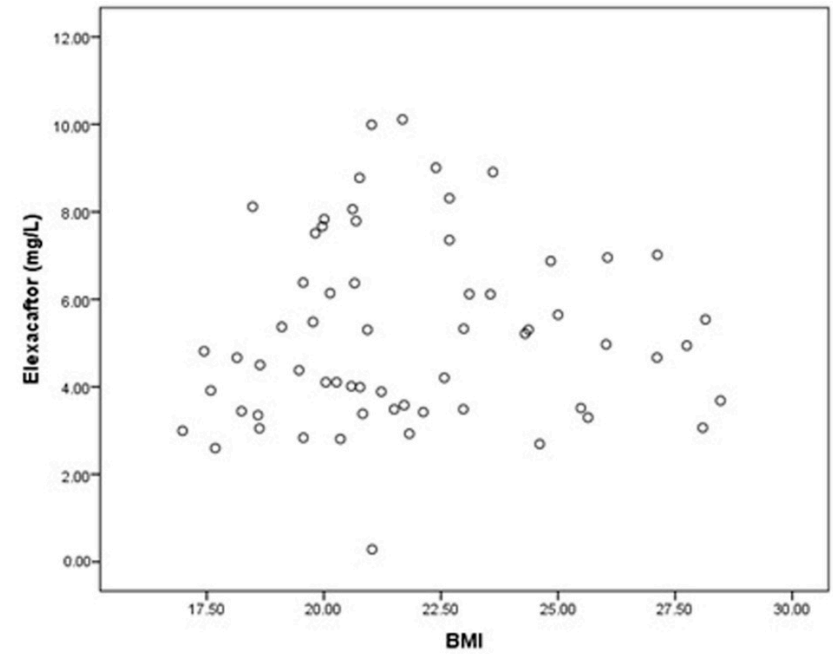
Supplementary Figure S7: The scatter plot between Cthrough of ELX and sweat test.



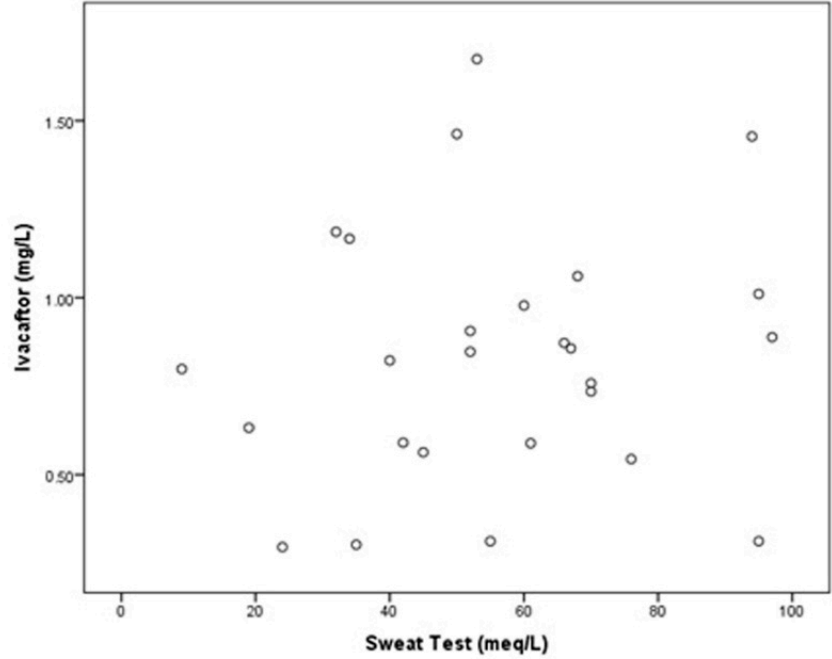
Supplementary Figure S8: The scatter plot between Cthrough of ELX and FEV1 (%).



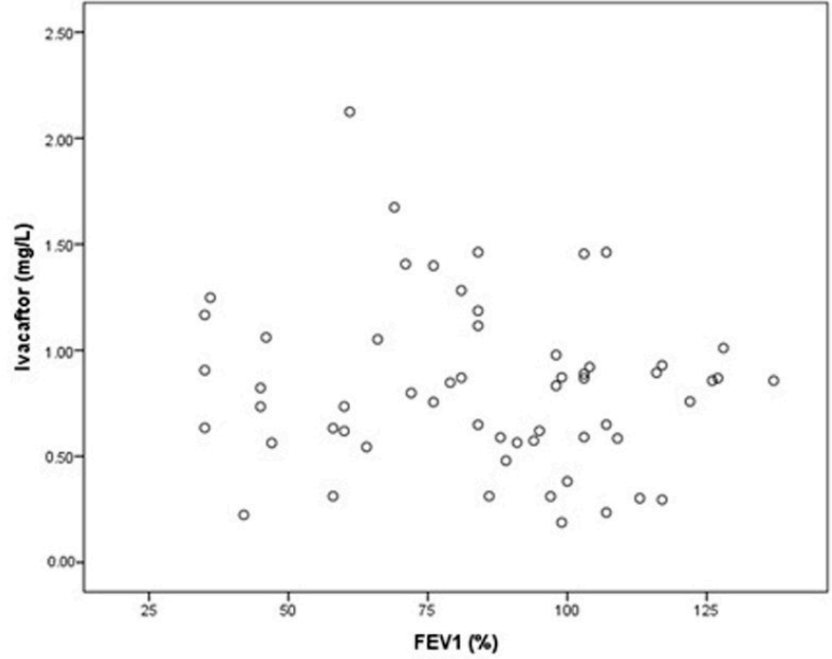
Supplementary Figure S9: The scatter plot between Cthrough of ELX and BMI.



Supplementary Figure S10: The scatter plot between Cthrough of IVA and sweat test.



Supplementary Figure S11: The scatter plot between Cthrough of IVA and FEV1 (%).



Supplementary Figure S12: The scatter plot between Cthrough of IVA and BMI.

