

Evaluation of the Essential Oil Composition of Five *Thymus* Species of Native to Greece

Eleni Kakouri ¹, Dimitra Daferera ¹, Anastasia Andriopoulou ¹, Panayiotis Trigas ² and Petros A. Tarantilis ^{1*}

¹ Laboratory of Chemistry, Department of Food Science and Human Nutrition, School of Food and Nutritional Sciences, Agricultural University of Athens, Iera Odos 75, 118 55 Athens, Greece

² Laboratory of Systematic Botany, Department of Crop Science, School of Plant Sciences, Agricultural University of Athens, Iera Odos 75, 118 55 Athens, Greece; Eleni Kakouri: elenikakouri@aua.gr; Dimitra Daferera: daferera@aua.gr; Anastasia Andriopoulou: natandriop@gmail.com; Panayiotis Trigas: trigas@aua.gr

*Correspondence: Petros A. Tarantilis; e-mail address: ptara@aua.gr; Tel: +30-210-5294265, Iera Odos 75, 118 55 Athens, Greece

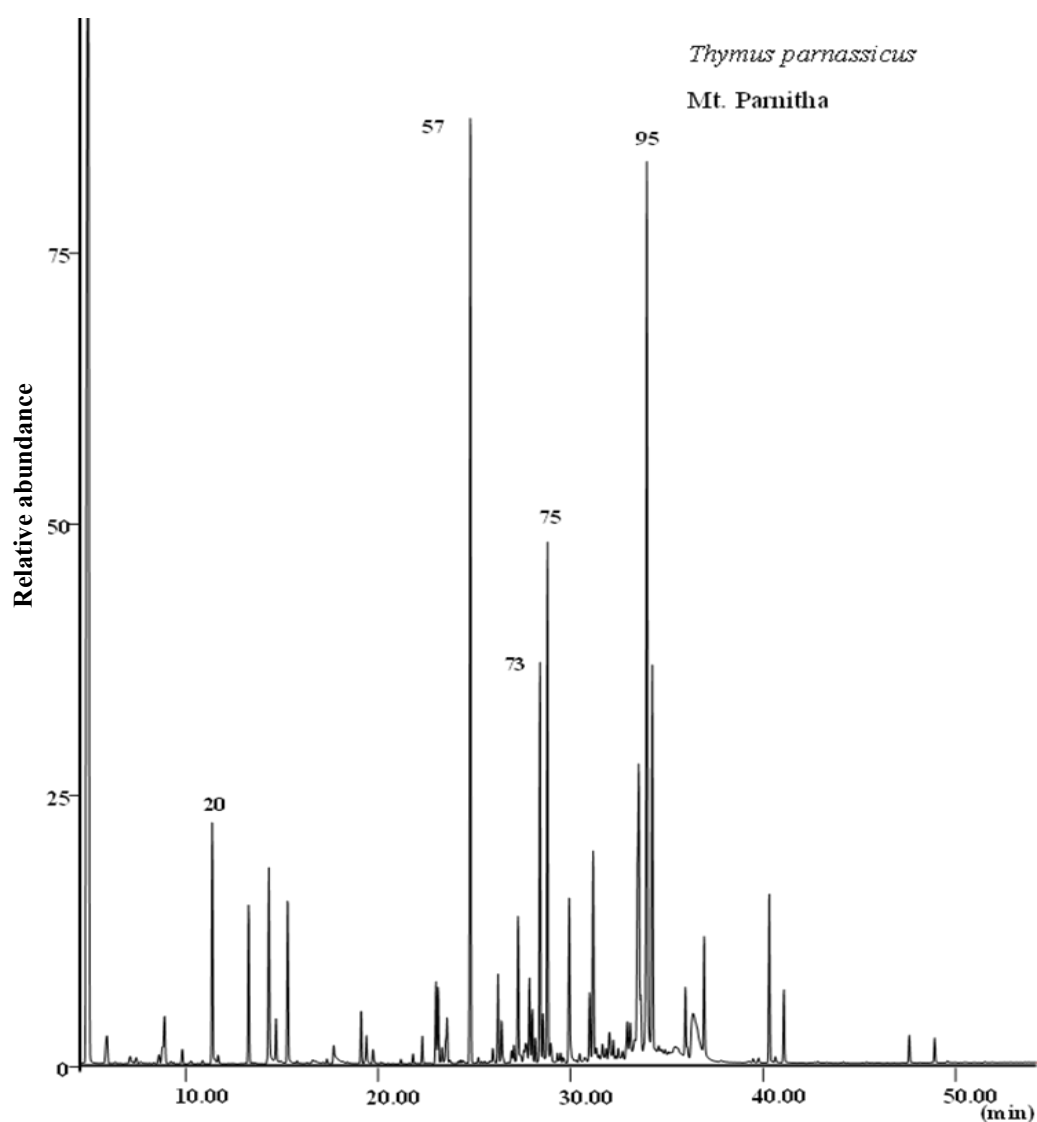


Figure S1: GC-MS chromatogram of *T. parnassicus* (Mt. Parnitha)

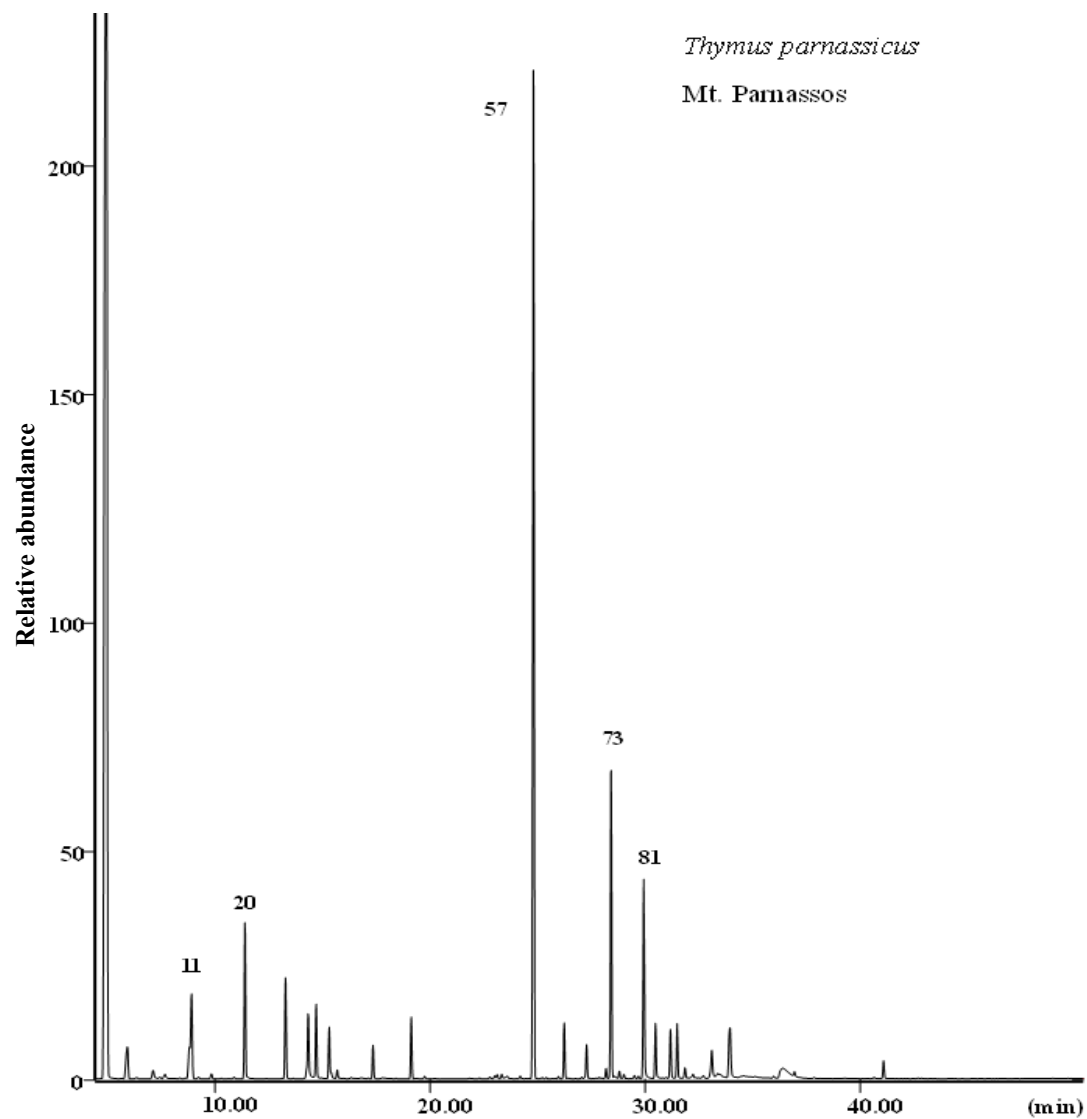


Figure S2: GC-MS chromatogram of *T. parnassicus* (Mt. Parnassos)

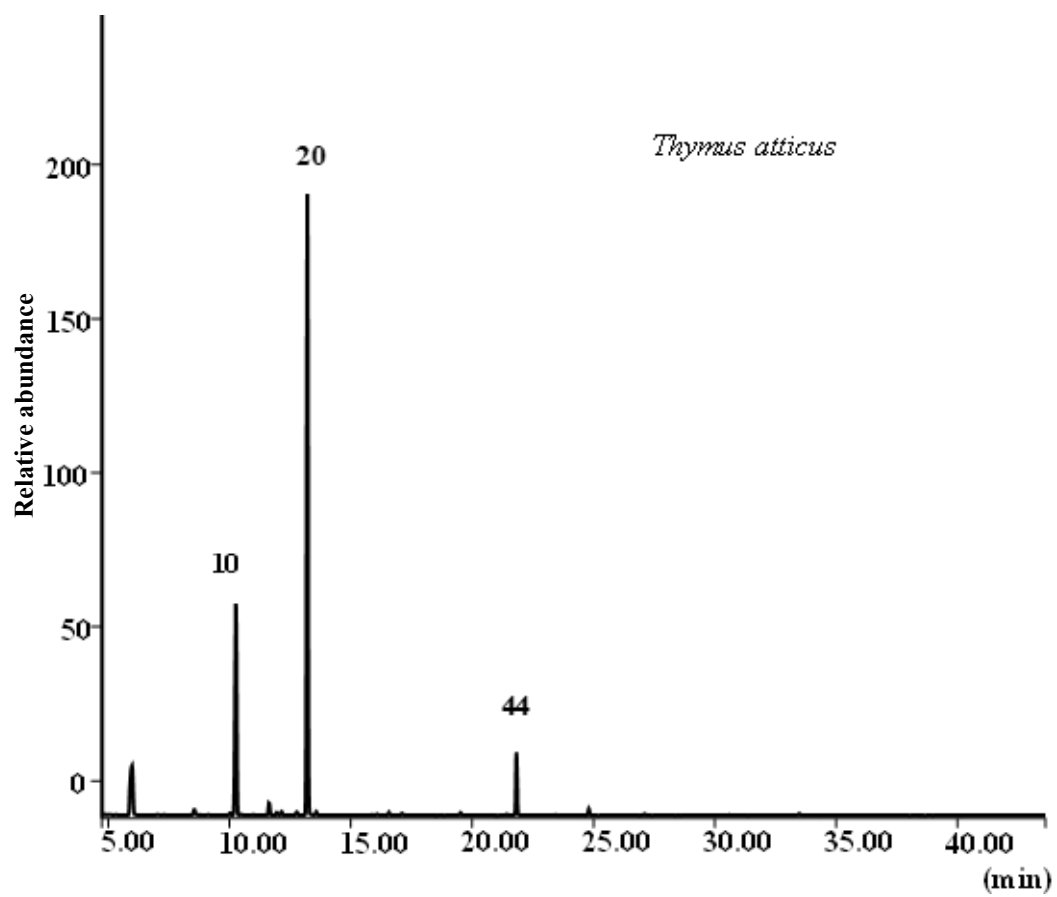


Figure S3: GC-MS chromatogram of *T. atticus* (Mt. Chelmos)

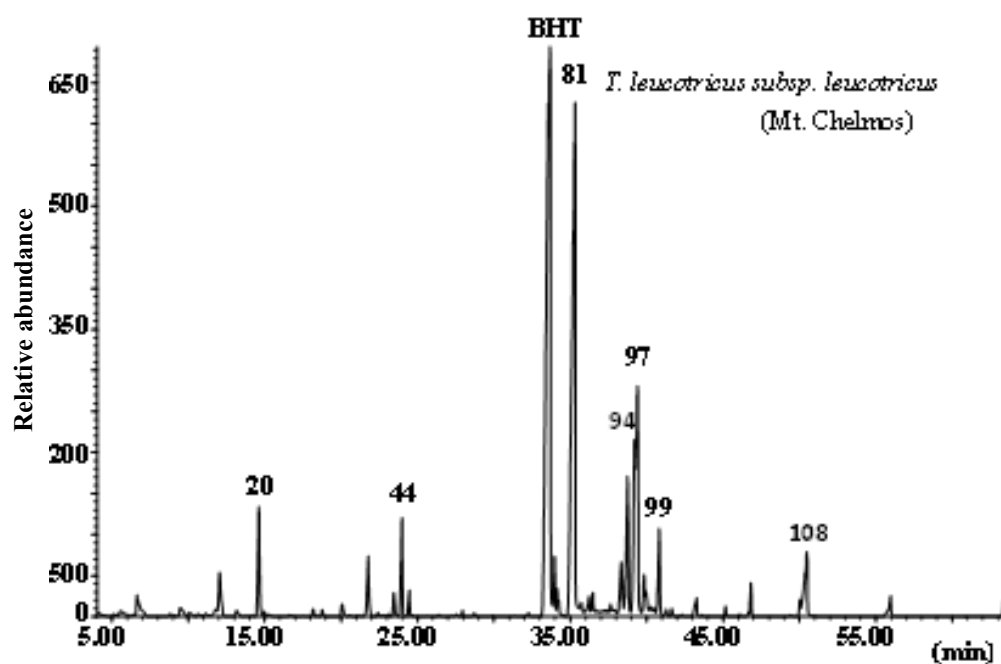


Figure S4: GC-MS chromatogram of *T. leucotricus subsp. leucotricus* (Mt. Chelmos)

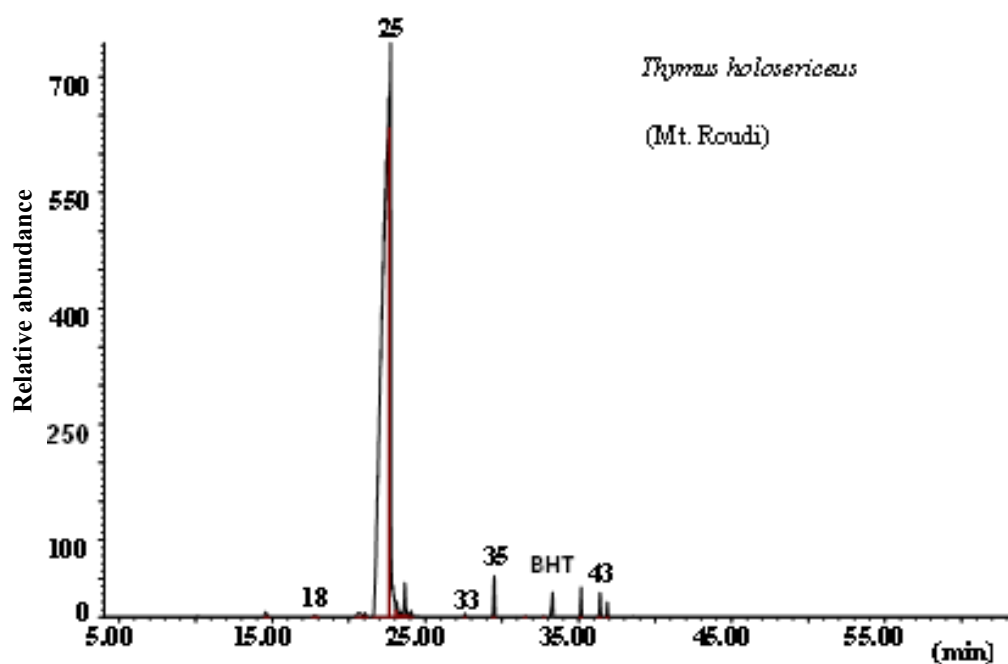


Figure S5: GC-MS chromatogram of *T. holosericeus* (Mt. Roudi)

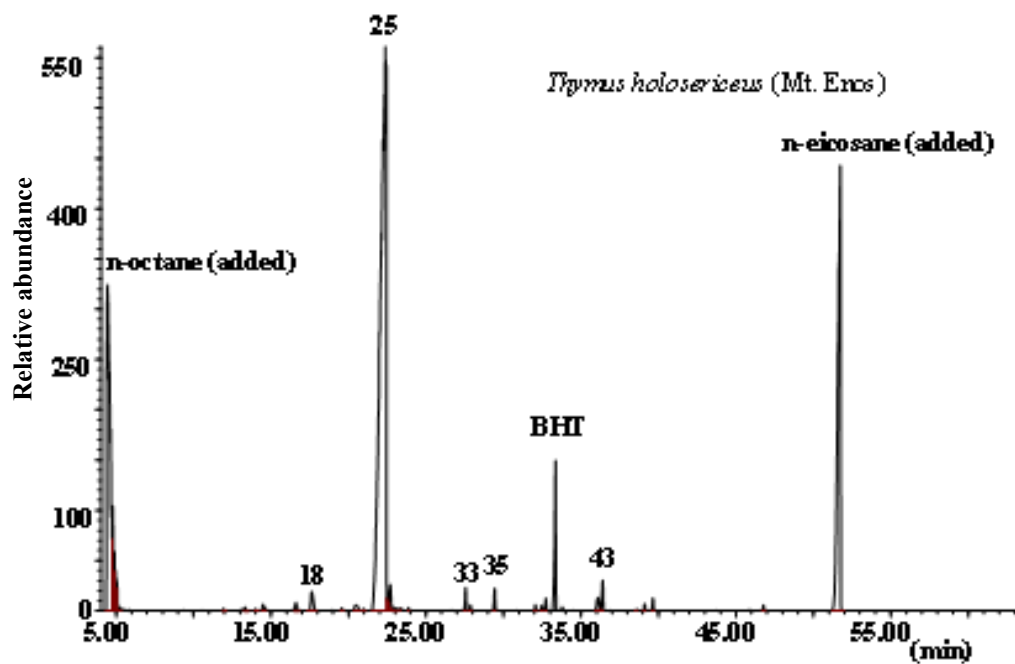


Figure S6: GC-MS chromatogram of *T. holosericeus* (Mt. Enos)

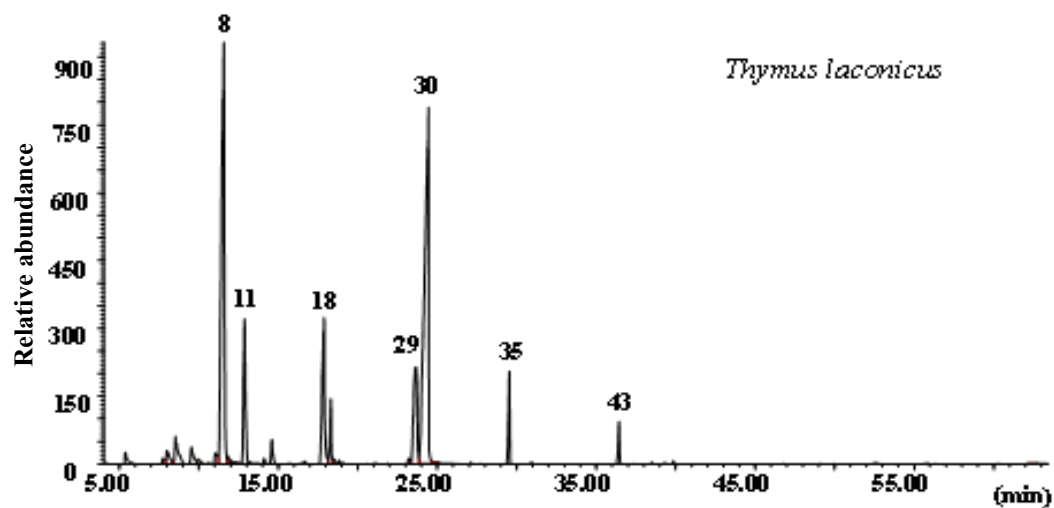


Figure S7: GC-MS chromatogram of *T. laconicus* (Geraki Lakonias)