

Supplementary Material

Solid-Phase Microextraction (SPME) and Gas Chromatographic/Mass Spectrometry in Chronic Obstructive Pulmonary Disease (COPD): A Chemometric Approach

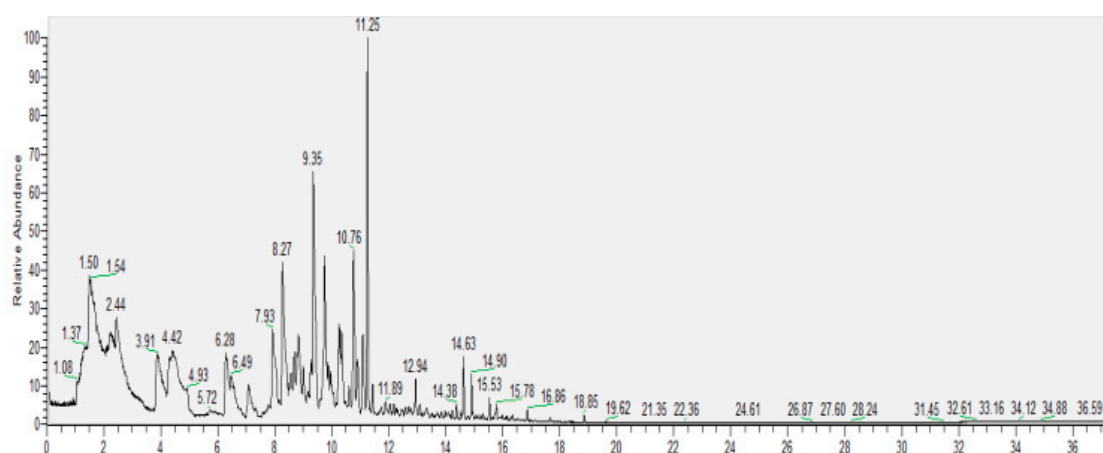
Loukia Lypirou ¹, Christos Chronis ², Konstantinos Exarchos ², Konstantinos Kostikas ² and Vasilios Sakkas ^{1,*}

¹ Chemistry Department, University of Ioannina, Ioannina, 45510, Greece; loukialpr@gmail.com

² Respiratory Medicine Department, School of Medicine, University of Ioannina, Ioannina, 45510, Greece; krapsi@hotmail.com (C.C.); kexarcho@gmail.com (K.E.); ktkostikas@uoi.gr (K.K.)

* Correspondence: vsakkas@uoi.gr; Tel.: +30-26510-08303

(A)



(B)

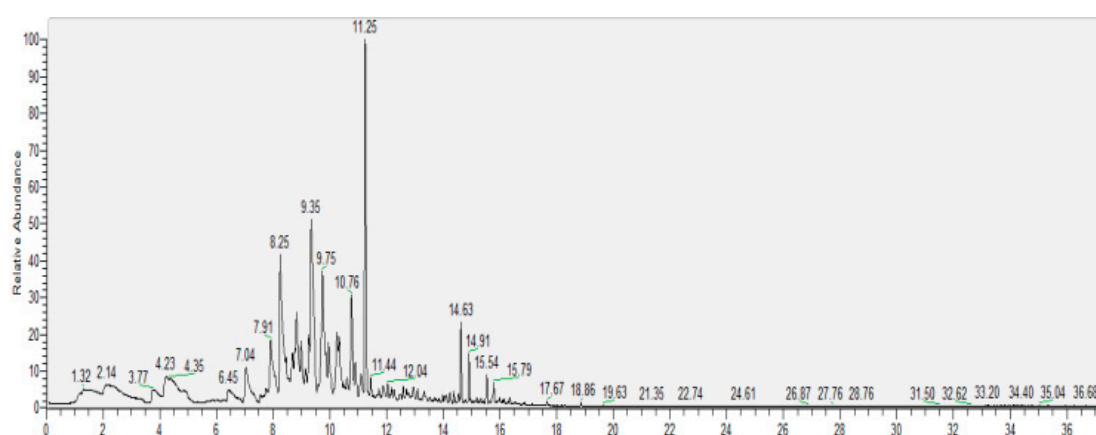


Figure S1. A typical SPME/GC-MS chromatogram of an exhaled breath sample of patient (A) with exacerbations and (B) without exacerbations.