

Supplementary information

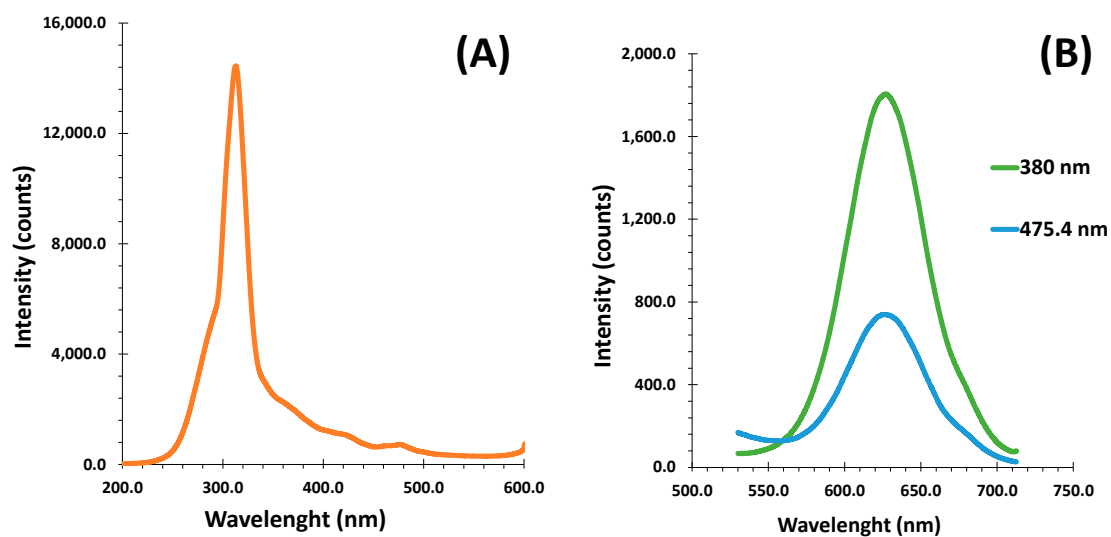
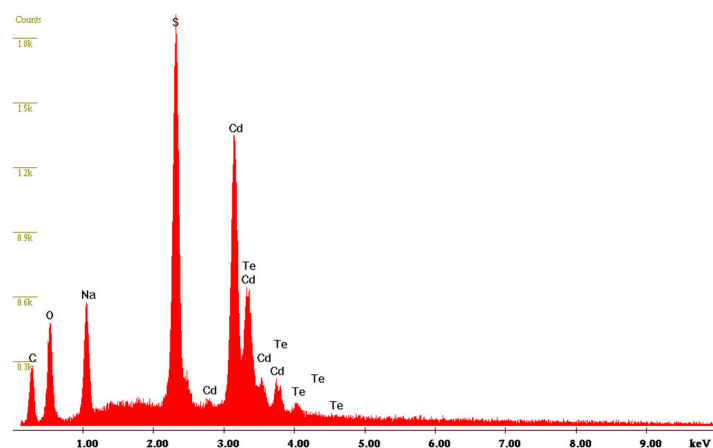


Figure S1. (A) Excitation spectrum of CdTe@MPA QDs in phosphate buffer at the emission of 580 nm. (B) Emission spectra of CdTe@MPA QDs in phosphate buffer upon excitation into 380 (green) and 475.4 nm (blue).



Element	Wt %	At %
C	10.56	28.53
O	15.36	31.13
Na	6.56	9.26
S	16.34	16.53
Cd	44.86	12.95
Te	6.33	1.61

Figure S2. EDS analysis of the QDs.

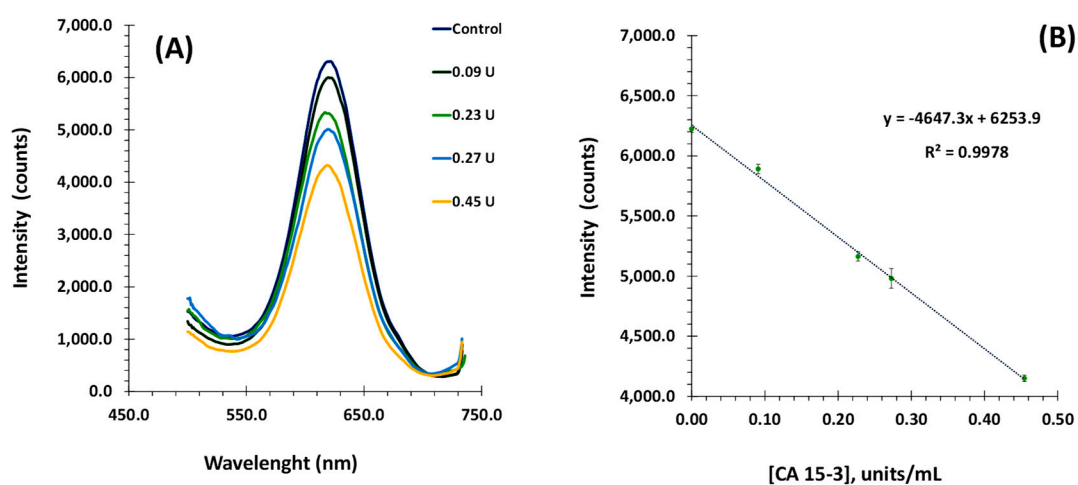


Figure S3. (A) Emission spectra of the QDs conjugates upon CA 15-3 protein recognition. The calibration curve was performed in PBS 10mM pH 7.4. (B) The analysis was conducted using a photomultiplier tube voltage of 410 PMT and an excitation wavelength of 380 nm (n=3).