

**Table S1.** Clinical characteristics of non-COVID and COVID patients on maintenance hemodialysis in Kee-lung Chang Gung Memorial Hospital ( $n = 497$ ).

	All HD patients ( $n = 497$ )	Non-COVID patients ( $n = 496$ )	COVID patient ( $n = 1$ )
Male, $n$ , (%)	263 (53)	263 (53)	0 (0)
Age, year	$66.03 \pm 13.28$	$66.04 \pm 13.29$	60.88
W.B.C. (x1000/uL)	$6.62 \pm 2.87$	$6.61 \pm 2.87$	6.80
Hb (g/dL)	$10.06 \pm 1.25$	$10.07 \pm 1.25$	8.20
Platelet (x1000/uL)	$190.47 \pm 68.53$	$190.51 \pm 68.60$	173
Albumin (g/dL)	$4.00 \pm 0.48$	$4.00 \pm 0.49$	3.76
AST (IU/L)	$18.49 \pm 10.31$	$18.49 \pm 10.32$	16
ALT (IU/L)	$17.87 \pm 14.74$	$17.87 \pm 14.75$	17
Alkaline-P (IU/L)	92 (71-137)*	92 (71-137)*	128
Total Bilirubin (mg/dL)	$0.38 \pm 0.16$	$0.38 \pm 0.16$	0.3
Cholesterol (mg/dL)	$153.76 \pm 36.27$	$153.79 \pm 36.31$	139
Triglyceride(mg/dL)	$151.77 \pm 116.22$	$151.92 \pm 116.30$	82
Creatinine (mg/dL)	$9.40 \pm 2.68$	$9.40 \pm 2.68$	9.04
Uric acid (mg/dL)	$6.43 \pm 1.82$	$6.43 \pm 1.82$	6.9
Na (meq/L)	$138.10 \pm 3.21$	$138.10 \pm 3.21$	137
K (meq/L)	$4.70 \pm 0.83$	$4.70 \pm 0.83$	5.7
Ca (mg/dL)	$9.33 \pm 0.90$	$9.33 \pm 0.89$	8.80
P (mg/dL)	$5.26 \pm 1.55$	$5.26 \pm 1.55$	6.00
Kt/V (Daugirdes)	$1.67 \pm 0.33$	$1.67 \pm 0.33$	1.46
nPCR (g/kg/day)	$1.08 \pm 0.39$	$1.08 \pm 0.39$	1.03
Ferritin (ng/mL)	$496.46 \pm 415.14$	$497.43 \pm 415.05$	41.9
Transferrin saturation (%)	$33.00 \pm 14.51$	$33.03 \pm 14.51$	17.11
intact-PTH (pg/mL)	285 (119, 672)*	284.50(118.75, 672.75)*	440
Cardiac/thoracic ratio	$0.52 \pm 0.07$	$0.52 \pm 0.06$	0.48
Ca x P product	$49.17 \pm 15.67$	$49.17 \pm 15.68$	52.80

Abbreviation: WBC, white blood cell count; AST, aspartate transaminase; ALT, alanine aminotransferase; Hb, hemoglobin; i-PTH, intact-parathyroid hormone; nPCR, normalized protein catabolic rate. \*Data are expressed as median (interquartile range)

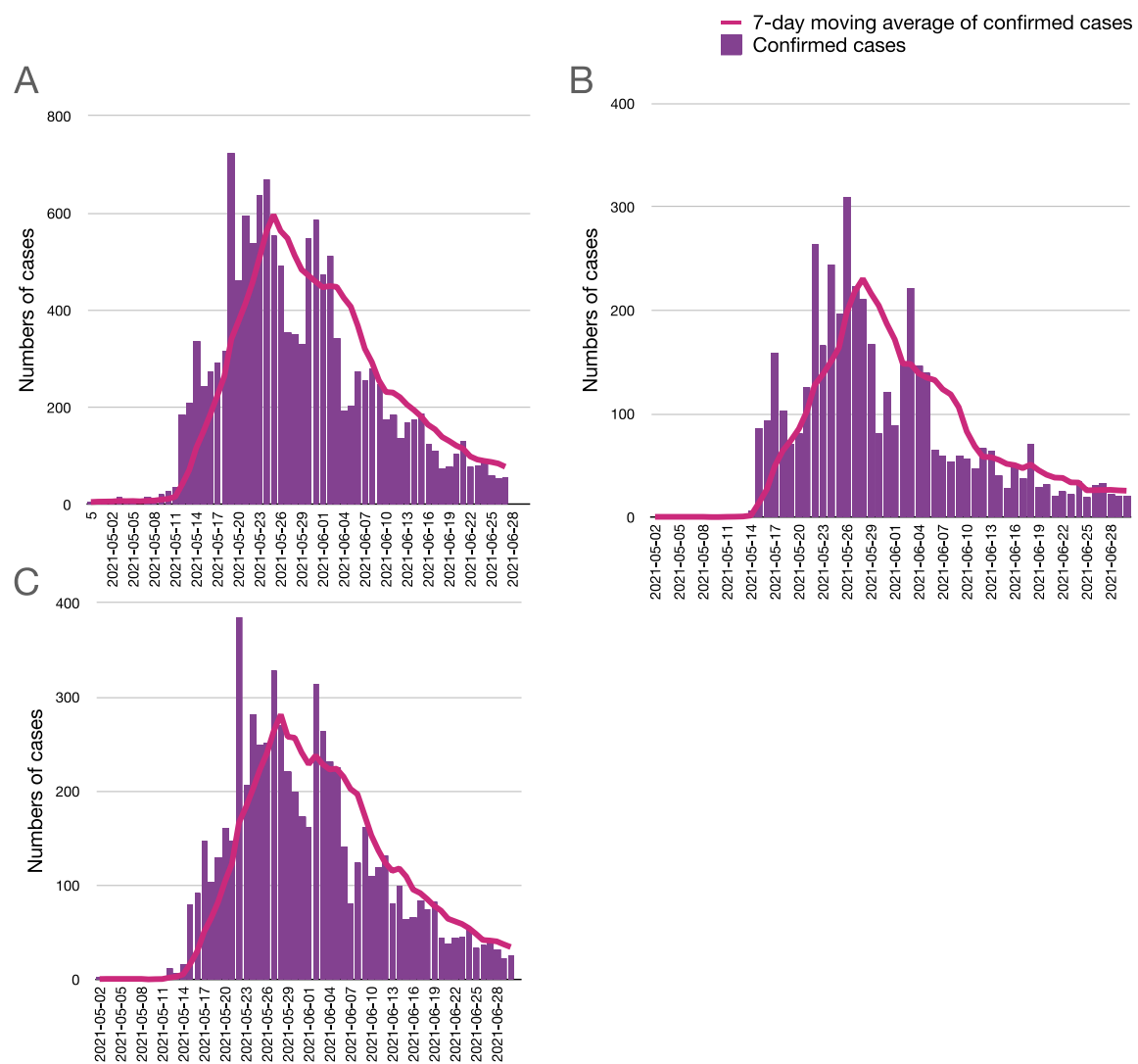


Figure S1: Estimates of COVID-19 confirmed case number and 7-days moving average of confirmed cases. (A) National estimates, (B) in Taipei City and (C) in New Taipei City.

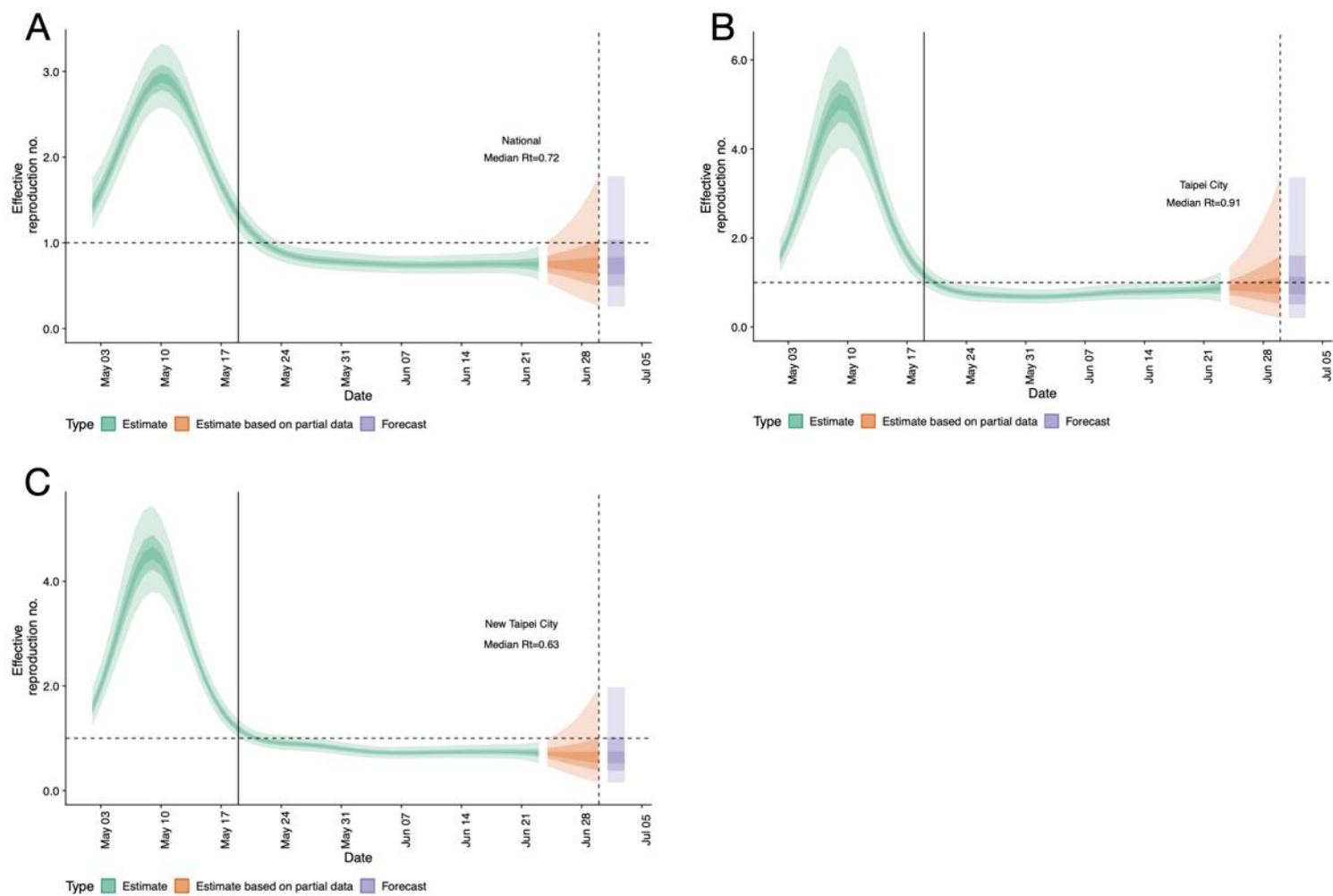


Figure S2: Estimated and predicted time-varying reproduction number ( $R_t$ ) of SARS-CoV-2 using national and subnational case counts reported in Taiwan Centers for Disease Control between May 2, 2021 and June 30, 2021. Estimation of time-varying  $R_t$  with 20%, 50%, 90% credible intervals using national data in Taiwan (A), Taipei City (B) and New Taipei City (C).