

Research Article

Network Analysis of a Membrane-Enriched Brain Proteome in Alzheimer's Disease

Lenora Higginbotham^{1*}, Eric B. Dammer^{2*}, Duc M. Duong², Erica Modeste², Thomas Montine³, James J. Lah¹, Allan I. Levey¹, and Nicholas T. Seyfried^{1,2,#}

¹ Department of Neurology, Emory University School of Medicine, Atlanta, GA 30322

² Department of Biochemistry, Emory University School of Medicine, Atlanta, GA 30322

³ Department of Pathology, Stanford University School of Medicine, Stanford, CA 94305

* Both authors contributed equally to this manuscript.

Correspondence: nseyfri@emory.edu; Tel.: 1-404-712-9783

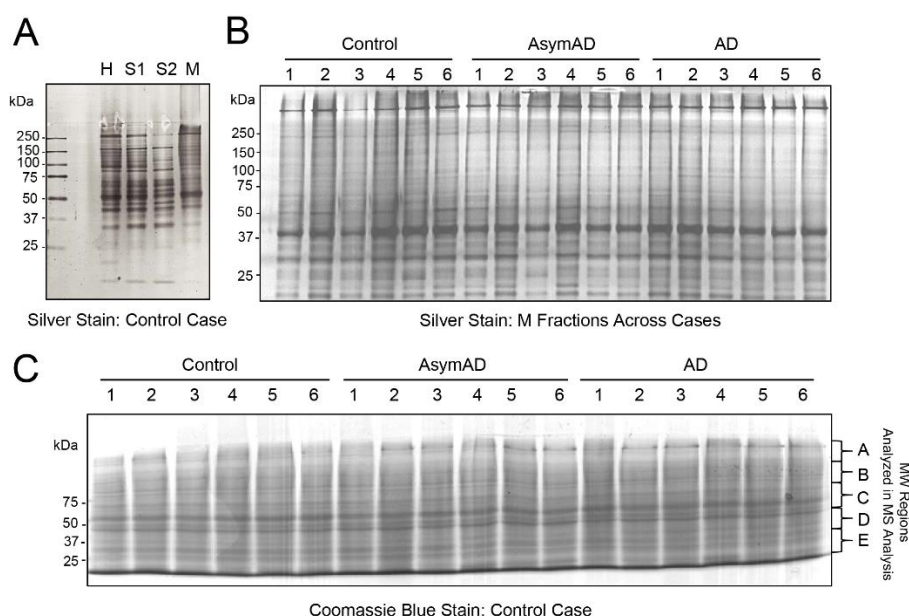


Figure S1. Preparation of Membrane-Enriched Samples. (A) Silver stain analysis of sequential fractions of an individual control case demonstrated differential banding between the cytosol-enriched S2 and membrane-enriched M fractions. (B) Silver stain analysis of the M fractions from the 18 analyzed cases demonstrated consistent protein integrity and intensity throughout. (C) Coomassie-stained SDS-page gel of the 18 alkylated M fractions. Prior to proteomic analysis, each sample lane was cut into five gel bands corresponding to the approximate molecular weight (MW) ranges shown on the right. Abbreviations: H, Homogenate; S, Supernatant; P, Pellet; MW, Molecular Weight.



© 2019 by the authors. Submitted for possible open access publication under the terms and conditions of the Creative Commons Attribution (CC BY) license (<http://creativecommons.org/licenses/by/4.0/>).