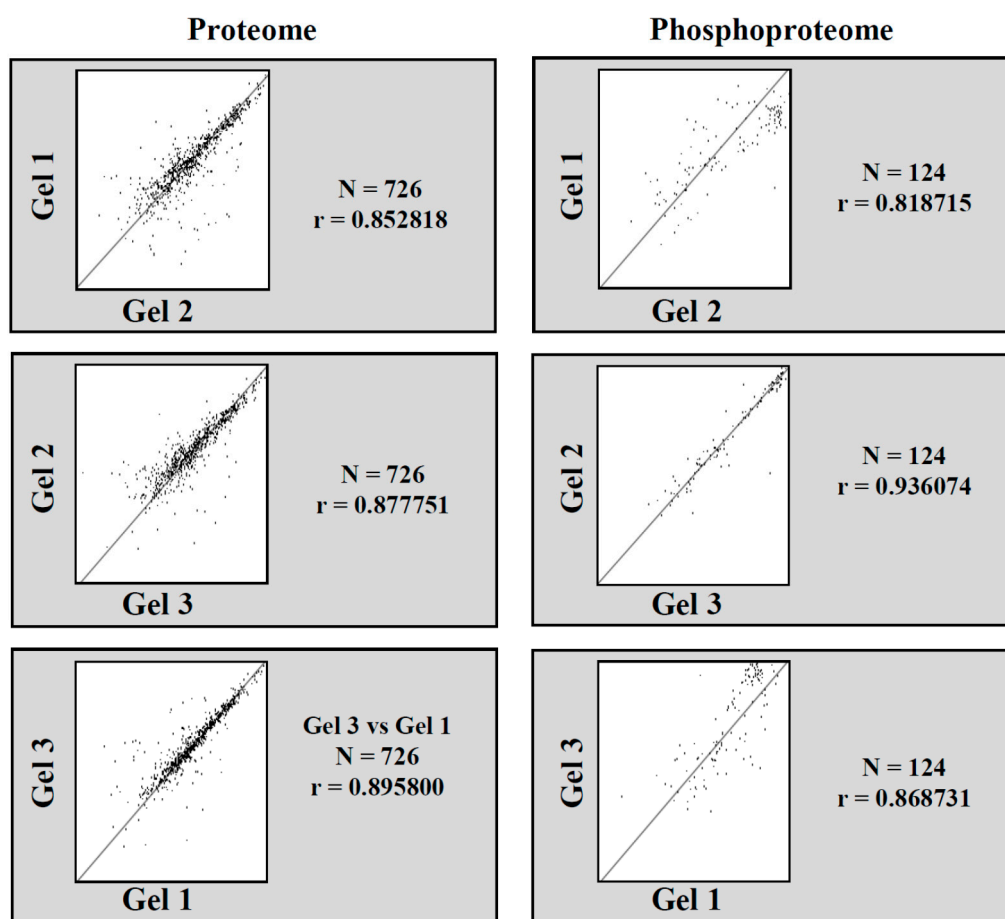
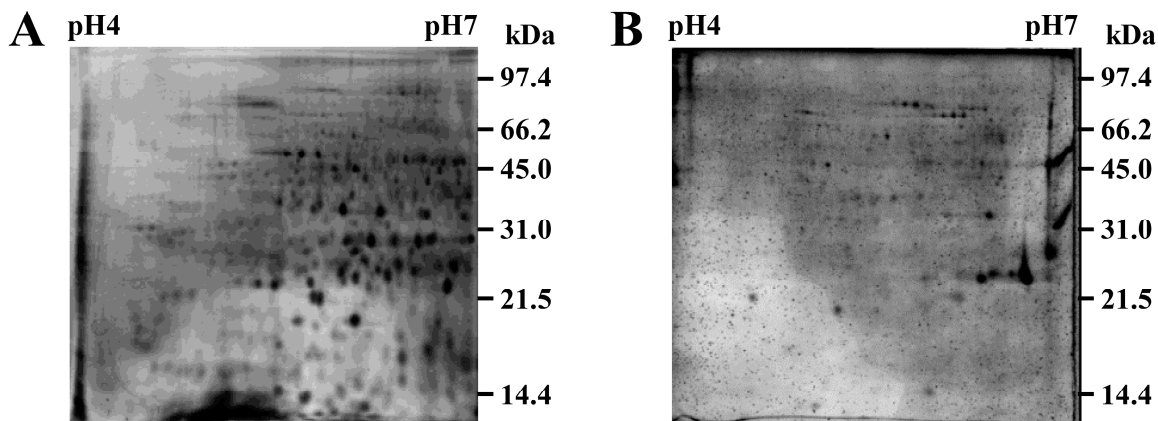


# Extracellular Matrix Proteome and Phosphoproteome of Potato Reveals Functionally Distinct and Diverse Canonical and Non-Canonical Proteoforms

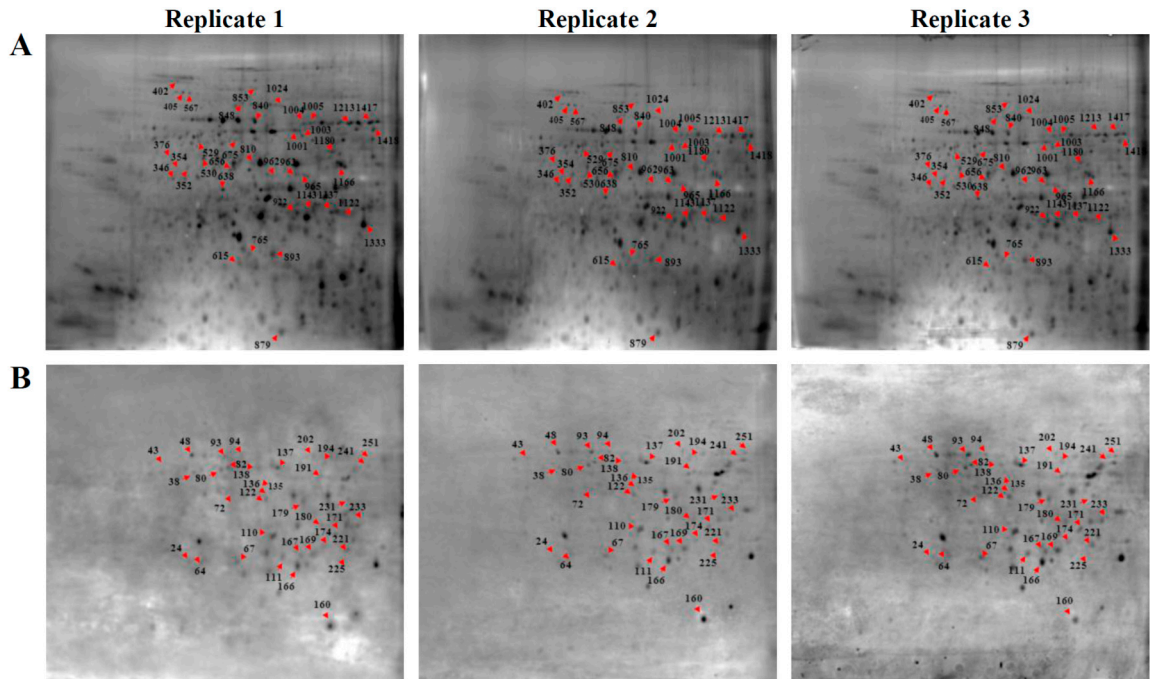
Eman Elagamey, Kanika Narula, Arunima Sinha, Pooja Rani Aggarwal, Sudip Ghosh, Niranjan Chakraborty and Subhra Chakraborty



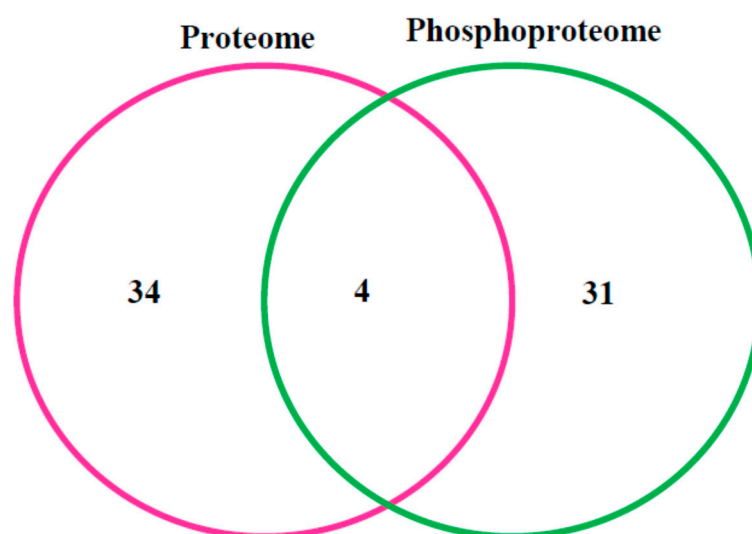
**Figure S1.** Scatter plots displaying a correlation coefficient of variation above 0.8 among the three replicates.



**Figure S2.** 2-DE reference maps of the potato ECM proteins and phosphoproteins zoomed onto pH 4-7 13 cm. (A) ECM proteins, (B) ECM phosphoproteins. The second dimension was performed on 12.5% (*w/v*) SDS-PAGE.



**Figure S3.** Reproducible 2-DE images of ECM proteome and phosphoproteome. (A) Proteins, (B) Phosphoproteins, zoomed onto 24 cm IPG strip (pH 4-7) and second dimension was performed on 12.5% (*w/v*) SDS-PAGE. The spot numbers marked in red arrows on three replicate gels correlate with the protein and phosphoprotein identifications as listed in Table 1 and Table 2.



**Figure S4.** Venn diagram depicting overlaps of proteome and phosphoproteome.