

Supplementary Materials: Simulated Regional Yields of Spring Barley in the United Kingdom under Projected Climate Change

David O. Yawson, Tom Ball, Michael O. Adu, Sushil Mohan, Barry Mulholland and Philip J. White

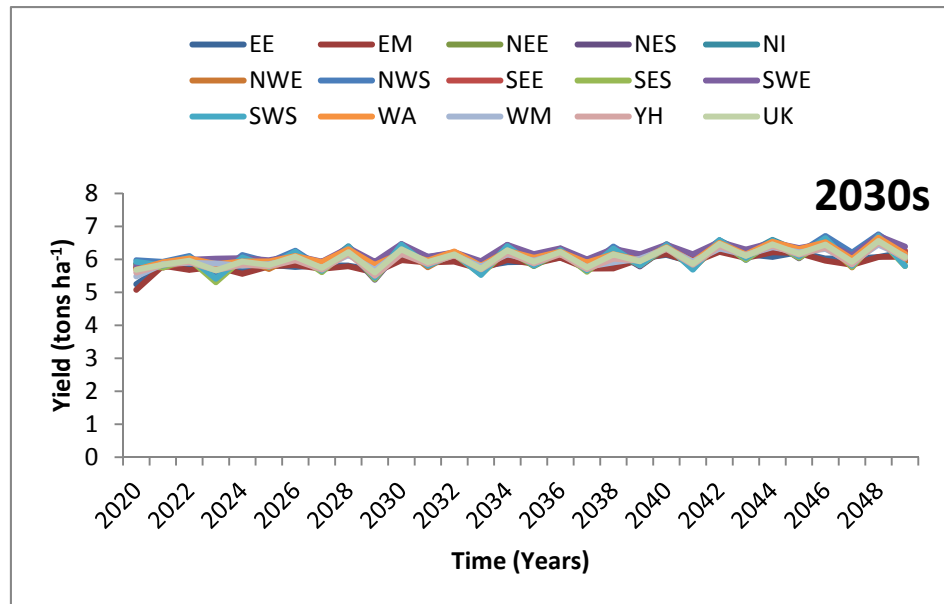


Figure S1. Temporal variations in yield under the LES in the 2030s. EE (Eastern England), EM (East Midlands), NI (Northern Ireland), NEE (North East England), NES (North East Scotland), NWE (North West England), NWS (North West Scotland), SEE (South East England), SES (South East Scotland), SWE (South West England), SWS (South West Scotland), WAL (Wales), WM (West Midlands), YH (Yorkshire and Humber).

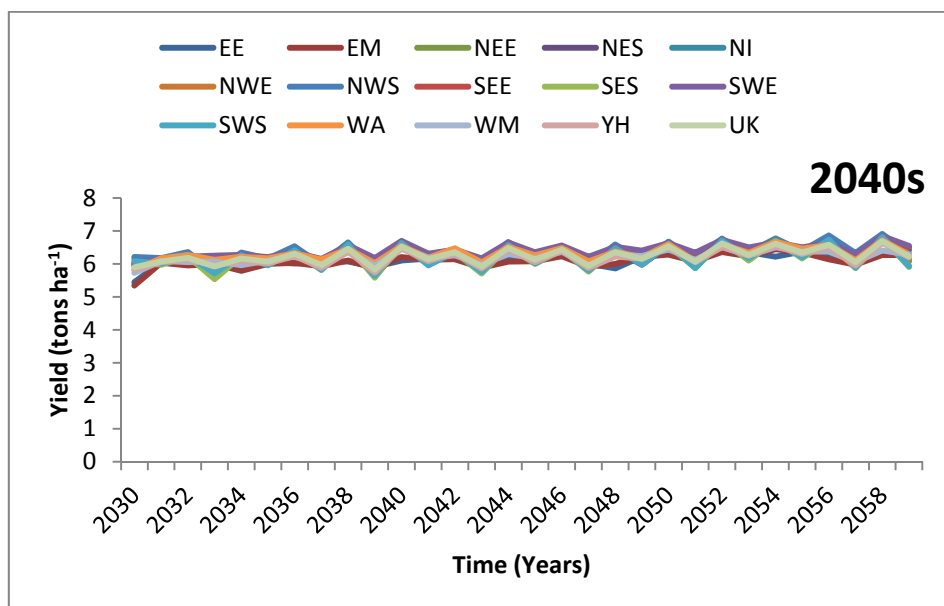


Figure S2. Temporal variations in yield under the low emissions scenario (LES) in the 2040s.

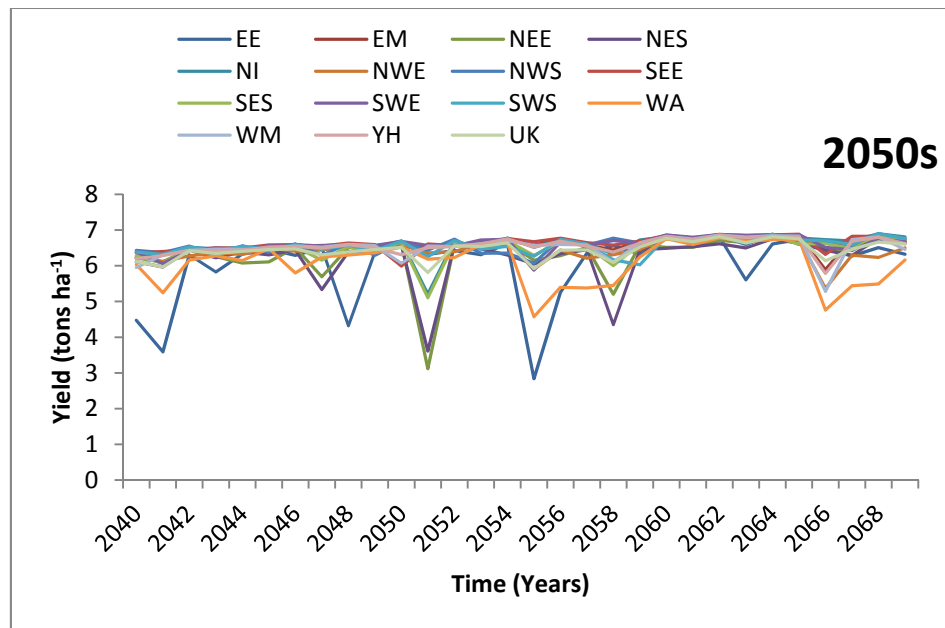


Figure S3. Temporal variations in yield under the LES in the 2050s.

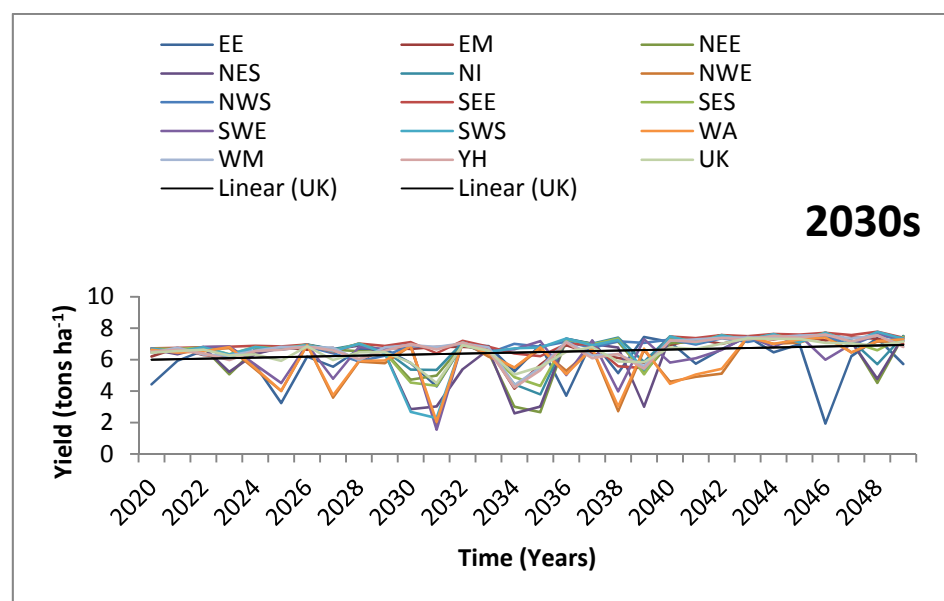


Figure S4. Temporal variations in yield under the medium emissions scenario (MES) in the 2030s.

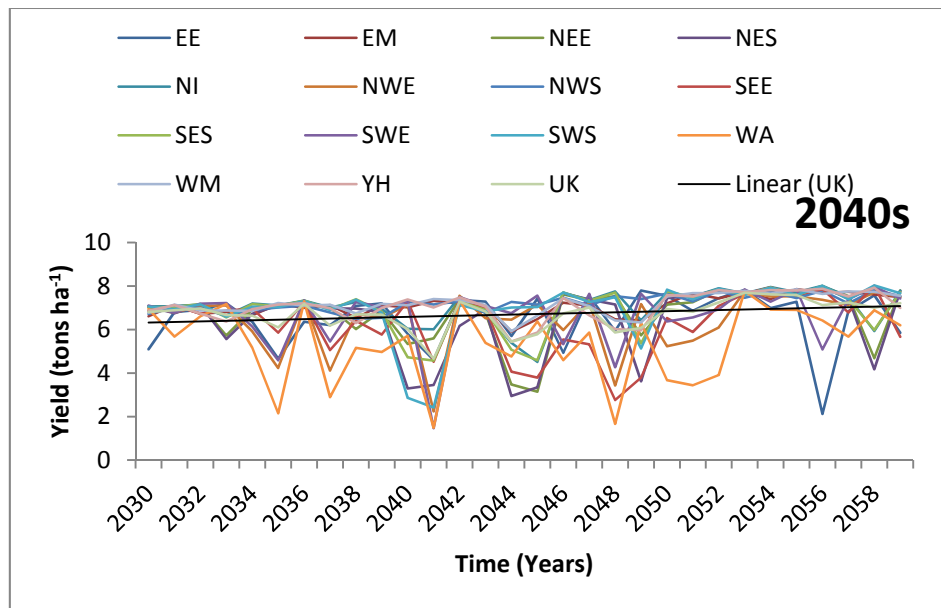


Figure S5. Temporal variations in yield under the MES in the 2040s.

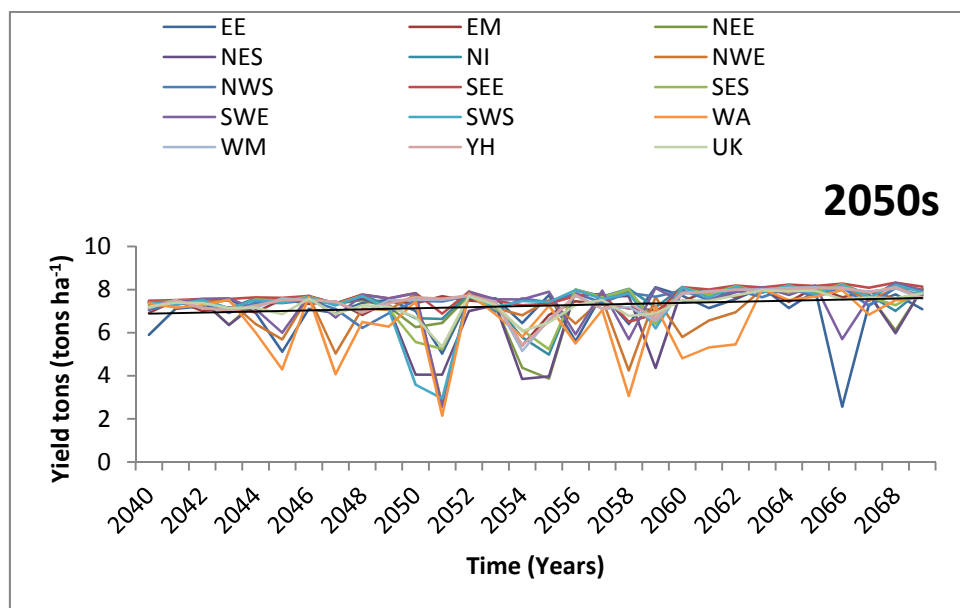


Figure S6. Temporal variations in yield under the MES in the 2050s.

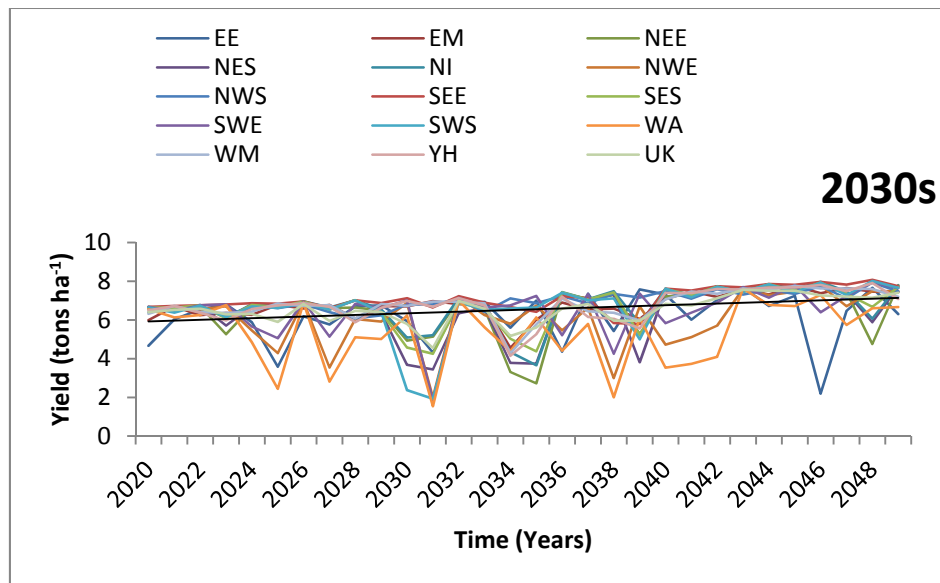


Figure S7. Temporal variations in yield under the HES in the 2030s.

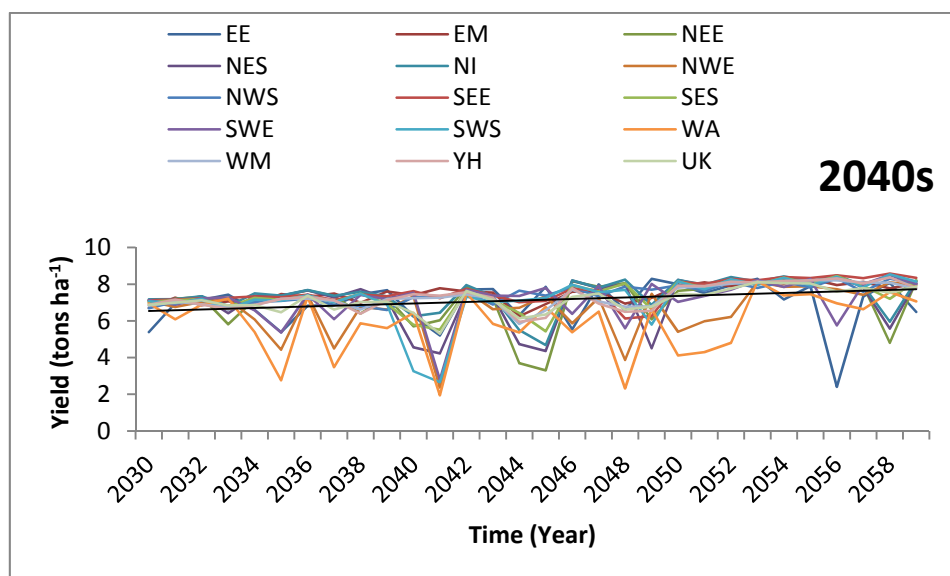


Figure S8. Temporal variations in yield under the high emissions scenario (HES) in the 2040s.

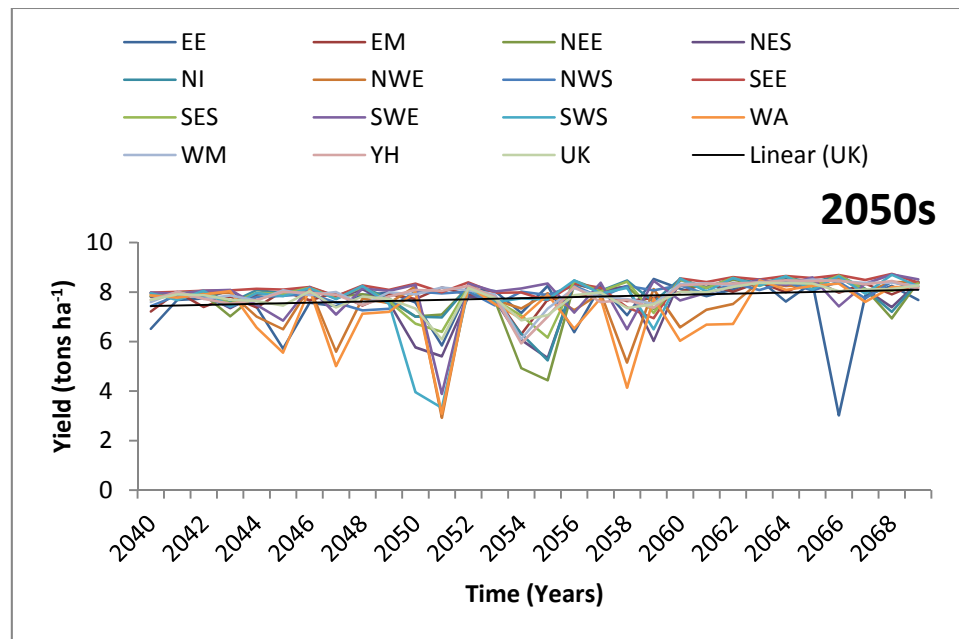


Figure S9. Temporal variations in yield under the HES in the 2050s.



© 2016 by the authors. Submitted for possible open access publication under the terms and conditions of the Creative Commons Attribution (CC-BY) license (<http://creativecommons.org/licenses/by/4.0/>).