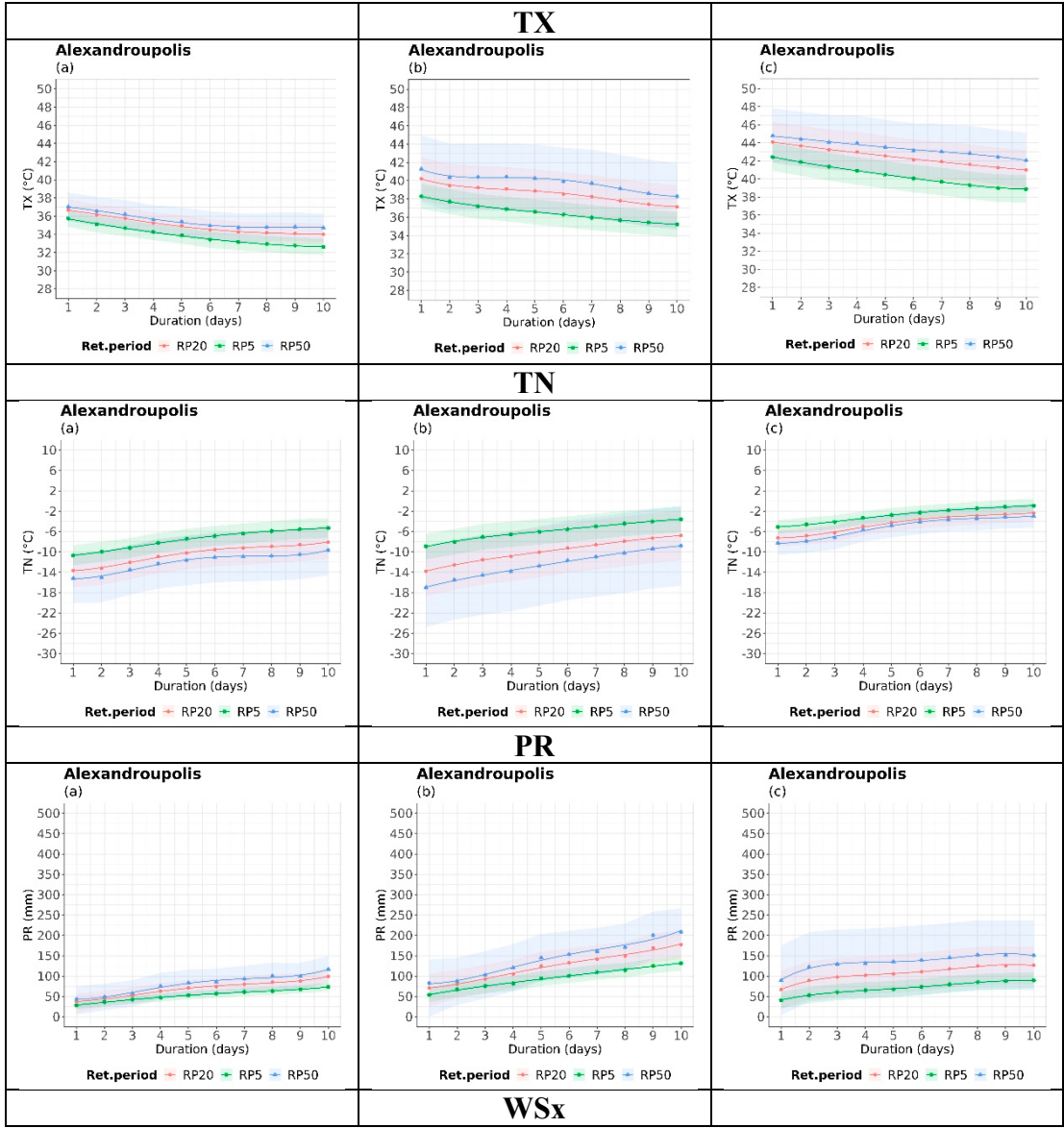


Title: Multi-hazard extreme scenarios quantification using intensity, duration and return period characteristics

Sfetsos Athanasios¹, Politi Nadia¹ and Vlachogiannis Diamando¹

¹Environmental Research Laboratory, INRaSTES, NCSR “Demokritos”, 15341 Agia Paraskevi, Greece

Case study of Alexandroupolis



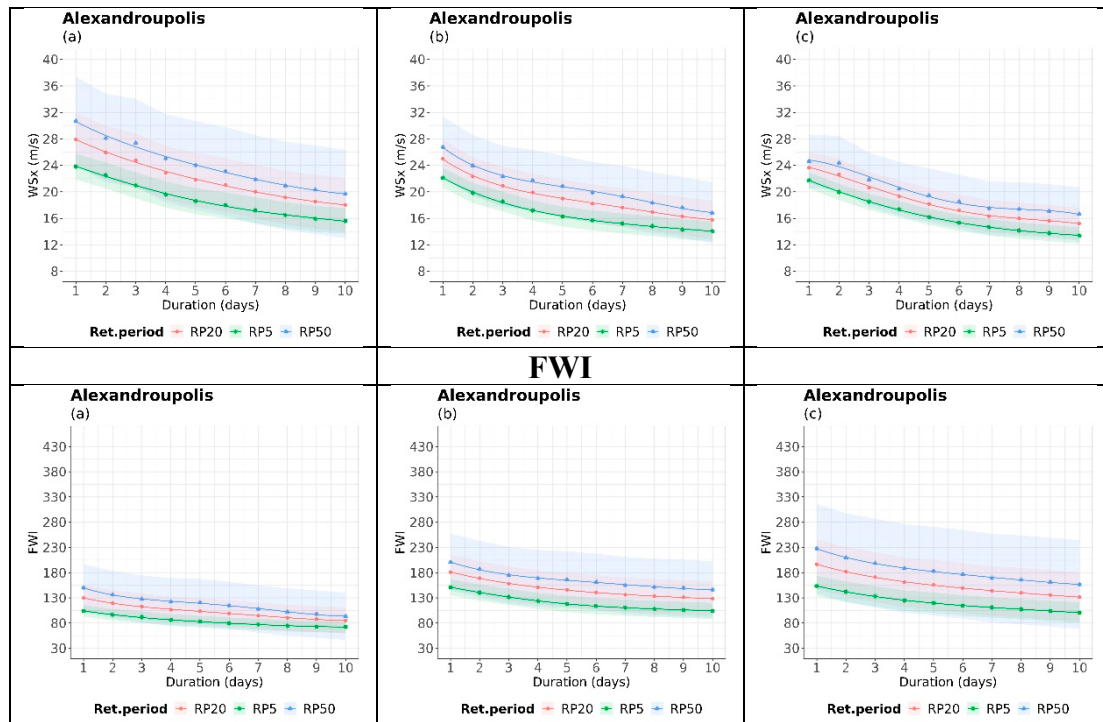
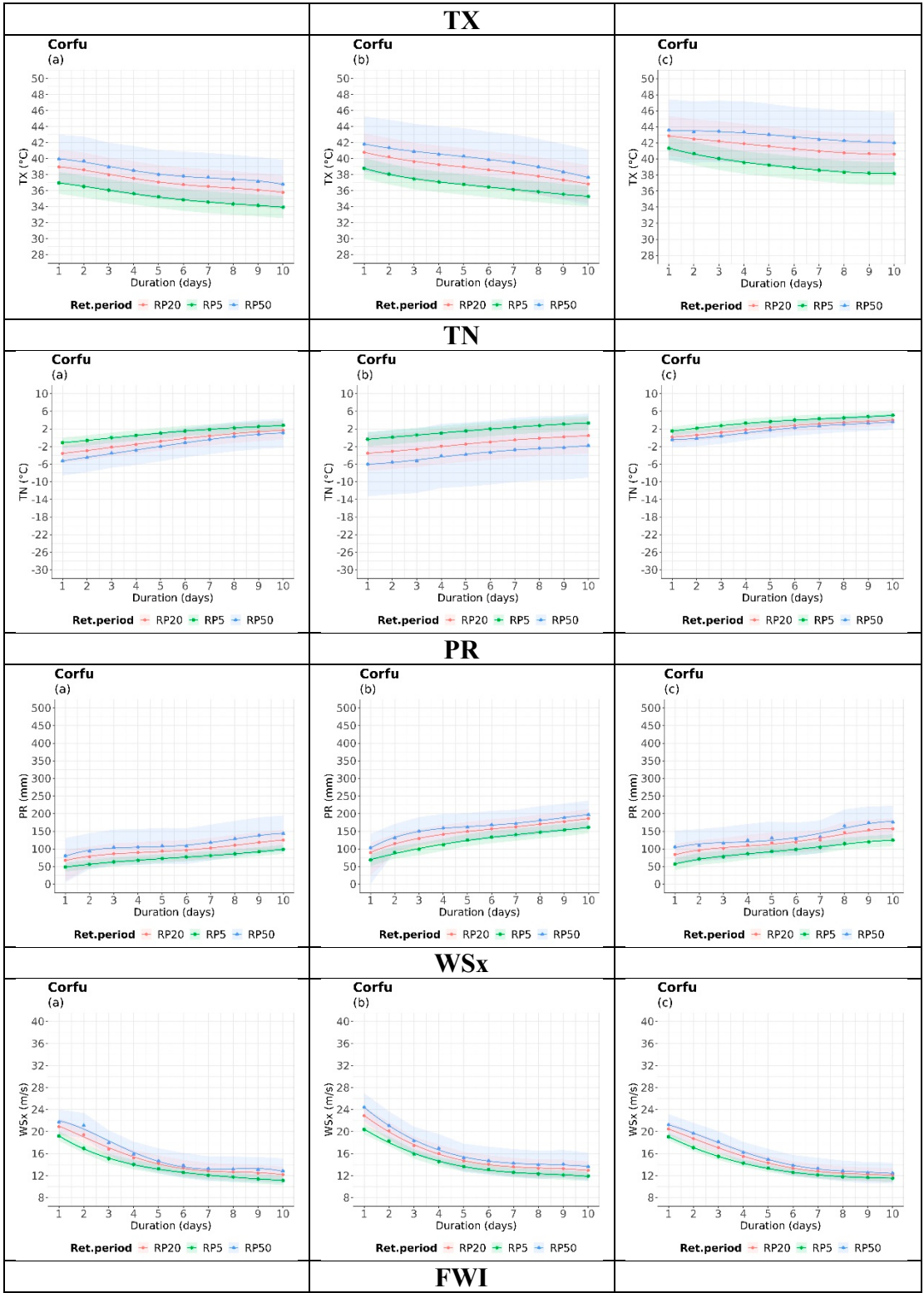


Figure S.1 Intensity-duration return period curves of the examined variables for 5,20 and 50 return periods, during a) the historical period (1980-2004), b) near future period (2025-2049) and c) far future (2075-2099) for Alexandroupolis. The colored areas illustrate the 99% confidence intervals for each return period.

Case study of Corfu



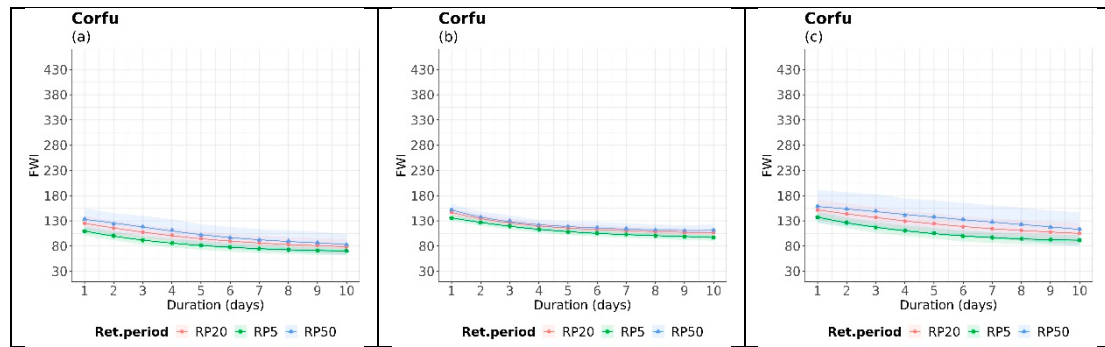
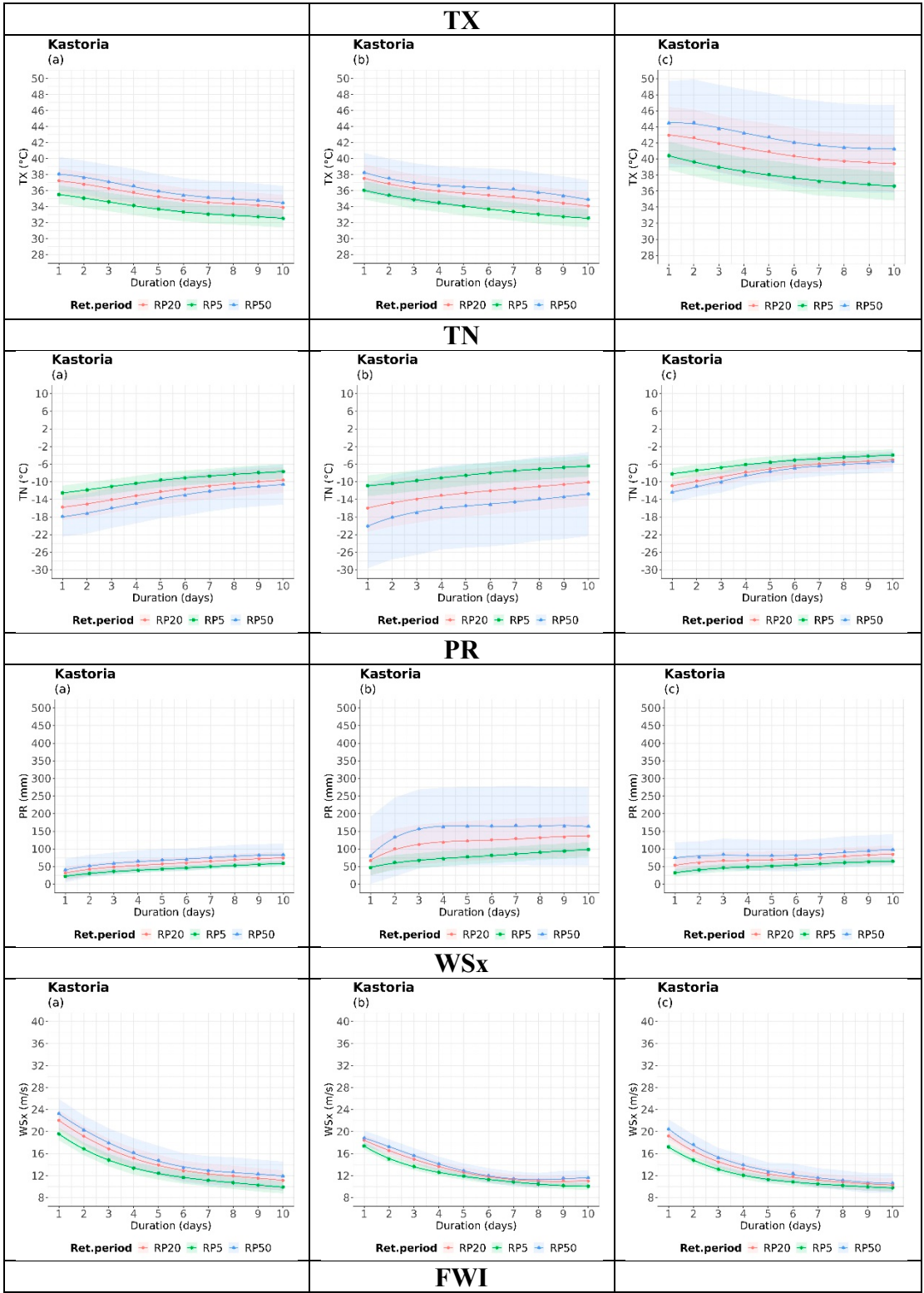


Figure S.2 Intensity-duration return period curves of the examined variables for 5,20 and 50 return periods, during a) the historical period (1980-2004), b) near future period 2025-2049 and c) far future 2075-2099 for Corfu.

Case study of Kastoria



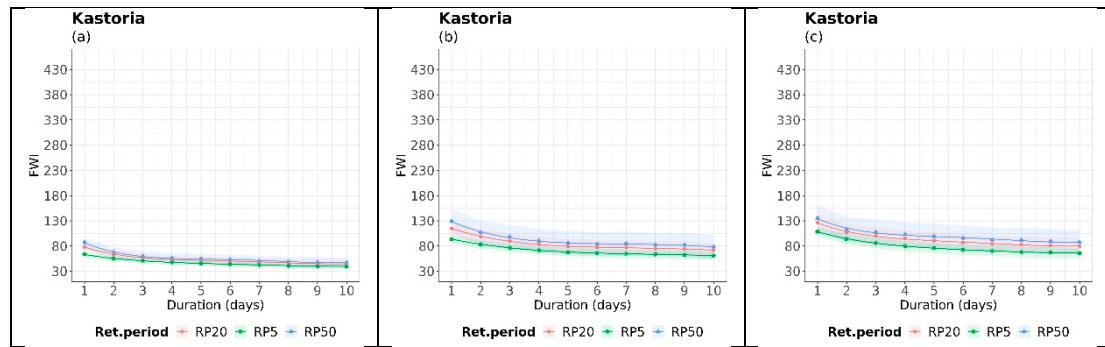
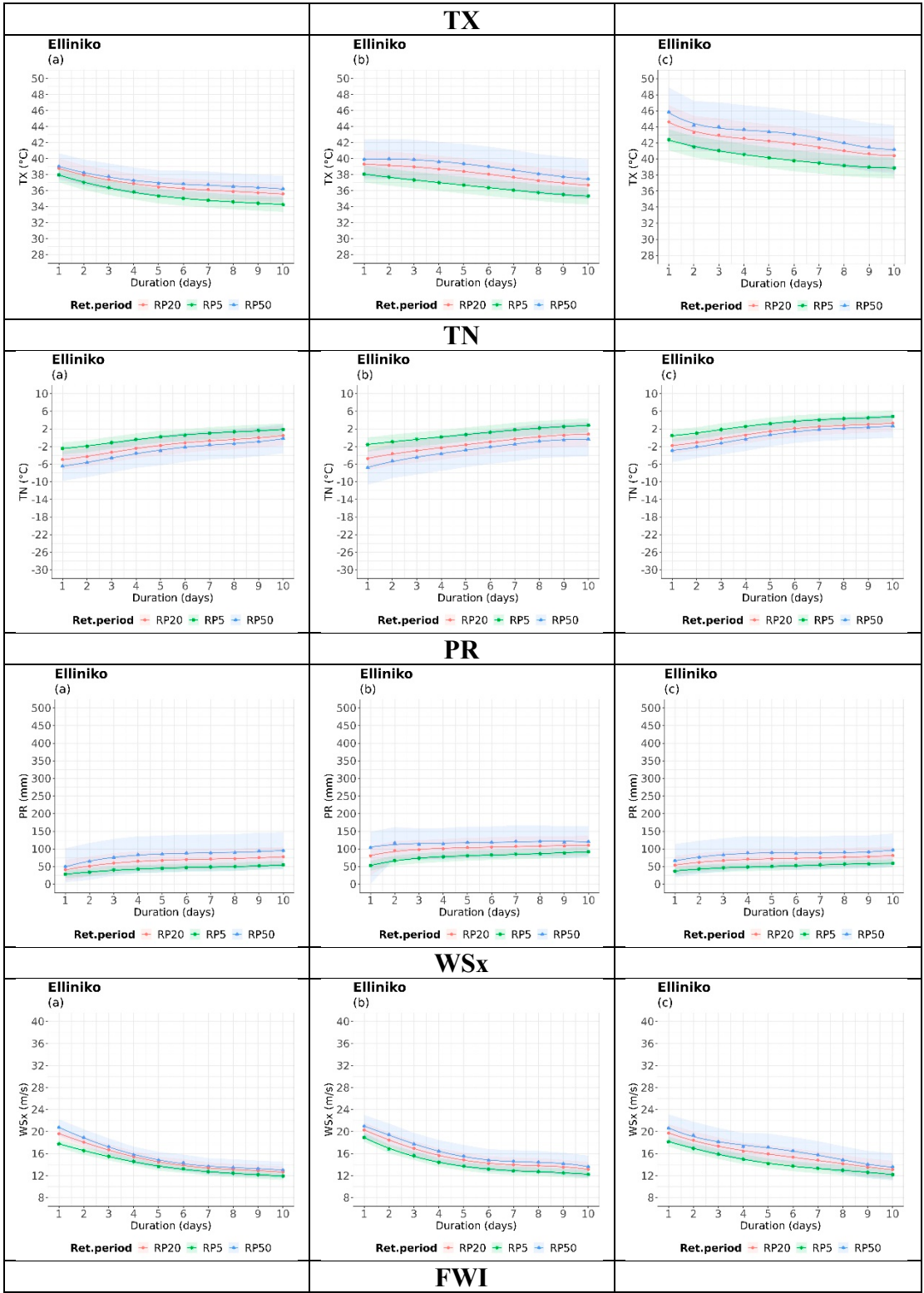


Figure S.3 Intensity-duration return period curves of the examined variables for 5,20 and 50 return periods, during the a) historical period (1980-2004), b) near future period 2025-2049 and c) far future 2075-2099 for Kastoria.

Case study of Elliniko



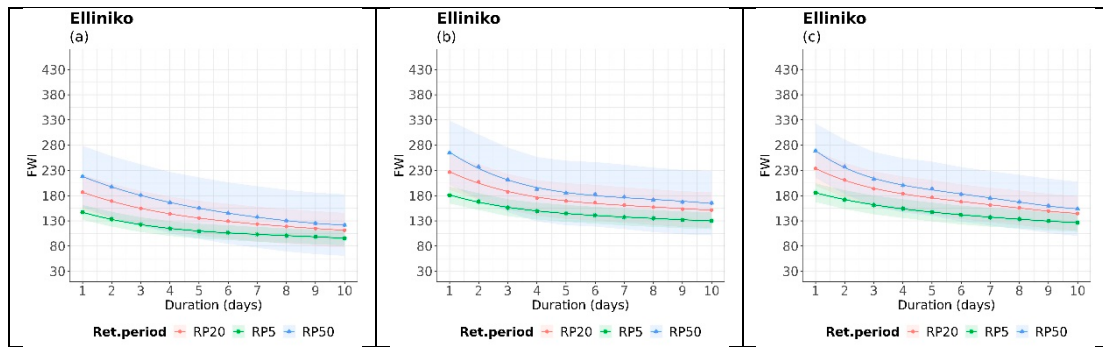
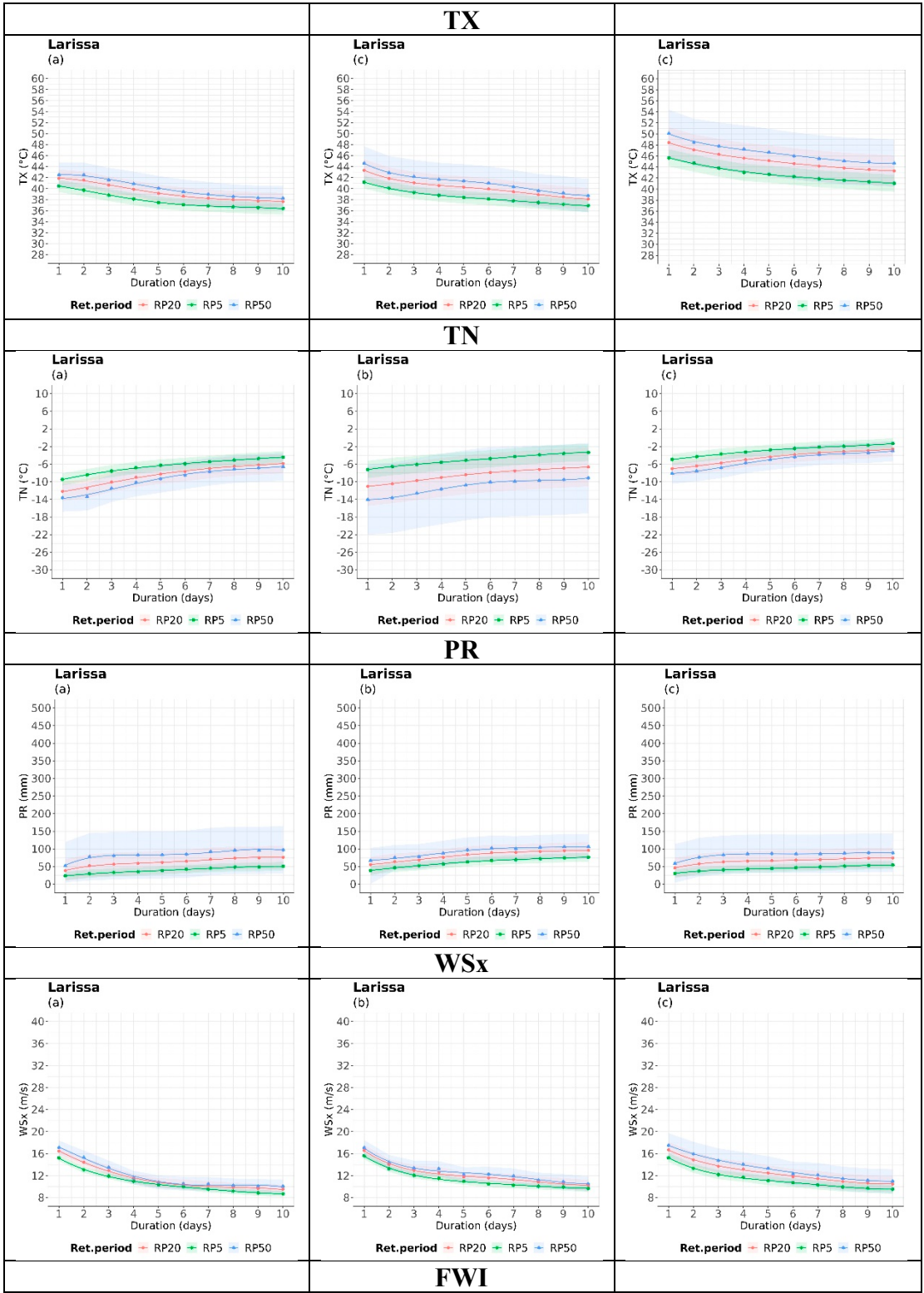


Figure S.4 Intensity-duration return period curves of the examined variables for 5,20 and 50 return periods, during the a) historical period (1980-2004), b) near future period 2025-2049 and c) far future 2075-2099 for Elliniko.

Case study of Larissa



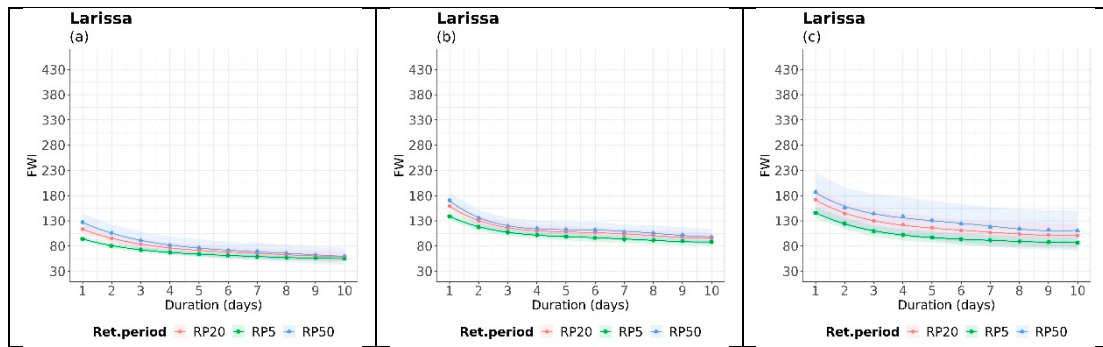
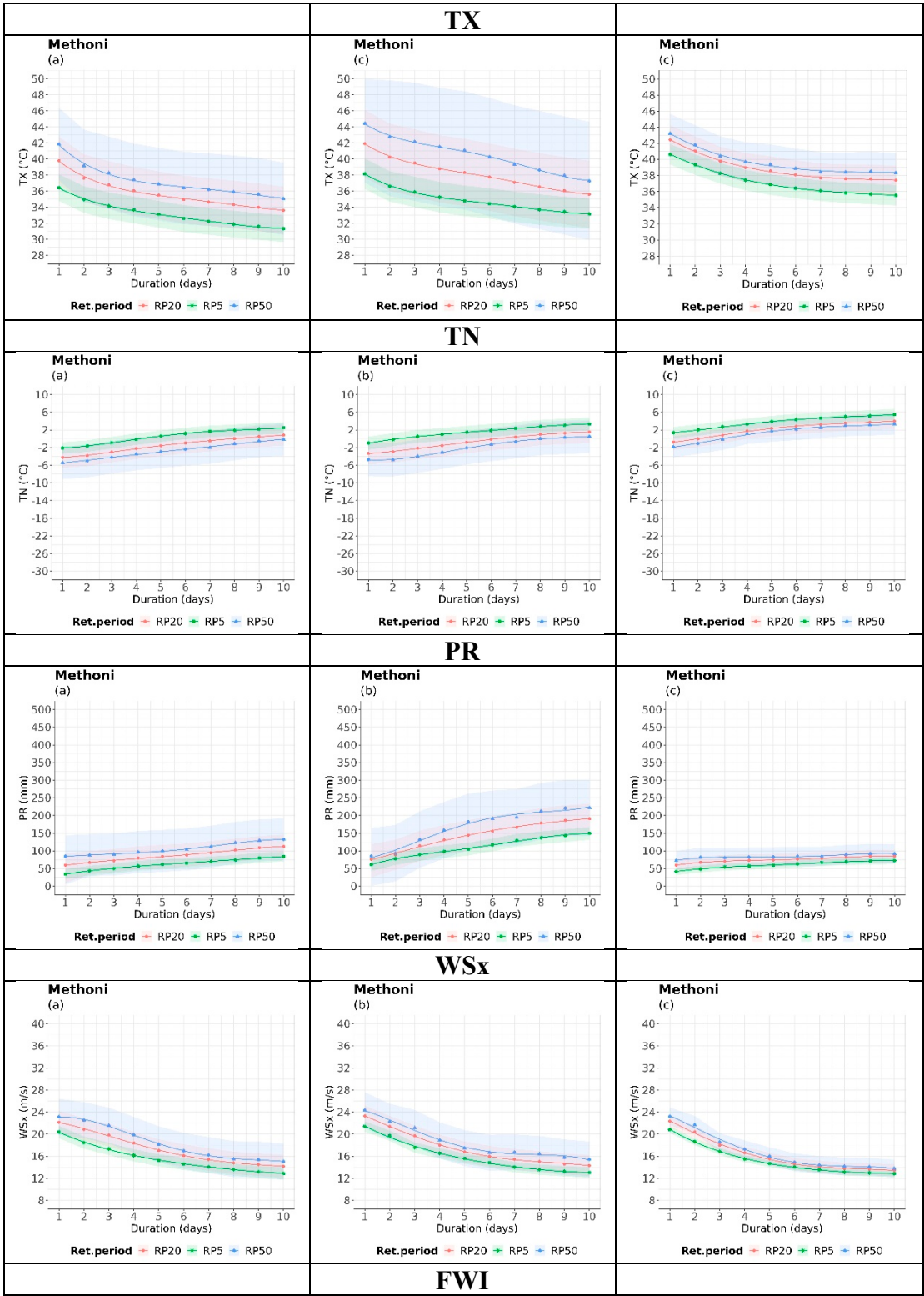


Figure S.5 Intensity-duration return period curves of the examined variables for 5,20 and 50 return periods, during the a) historical period (1980-2004), b) near future period 2025-2049 and c) far future 2075-2099 for Larissa.

Case study of Methoni



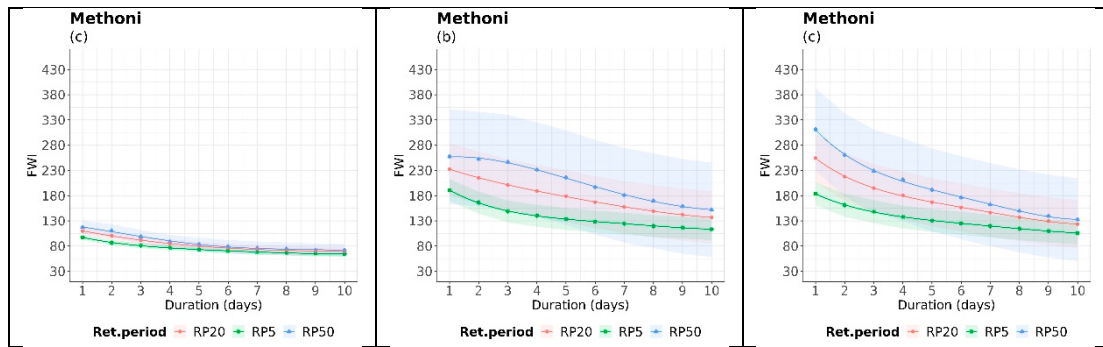
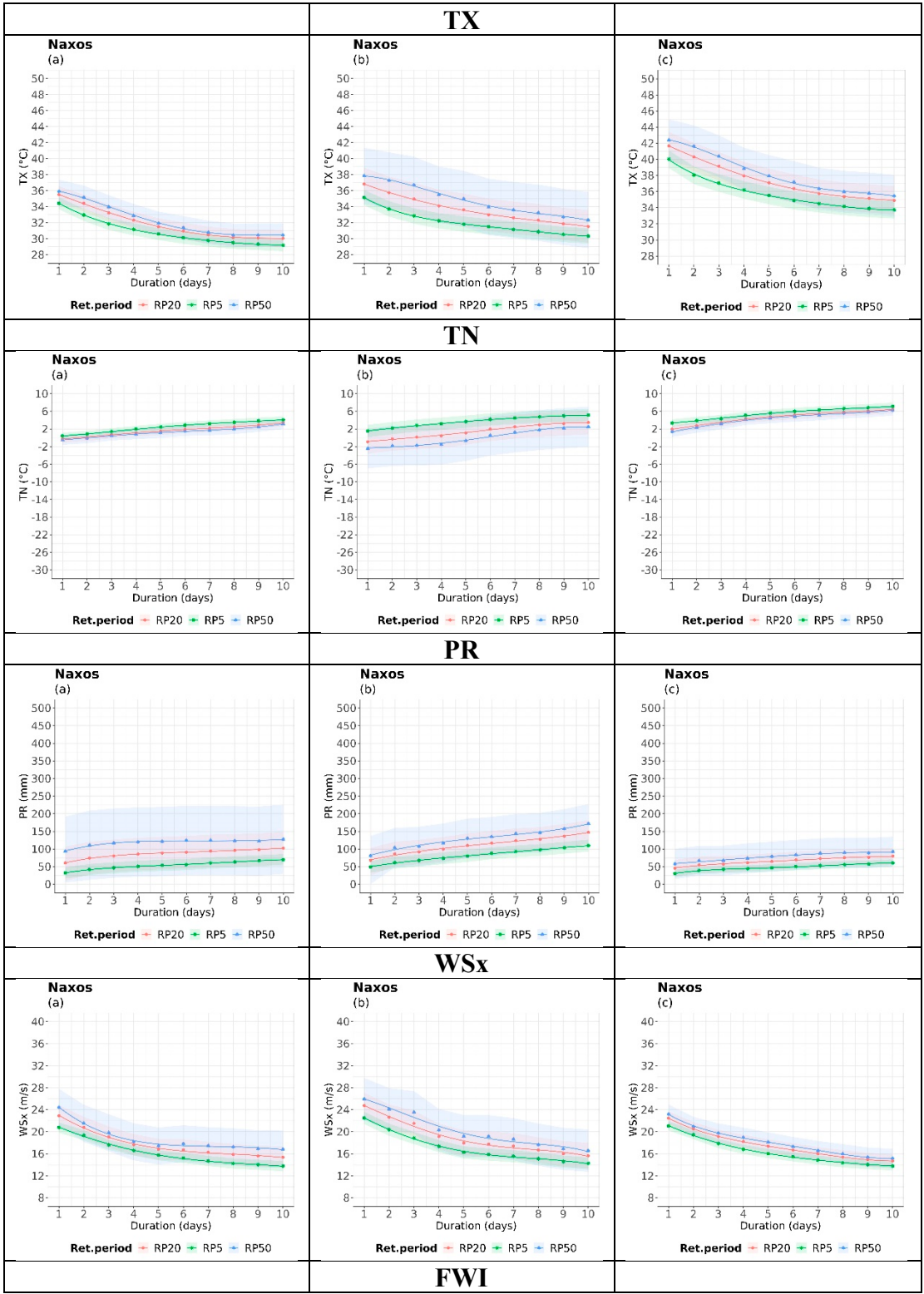


Figure S.6 Intensity-duration return period curves of the examined variables for 5,20 and 50 return periods, during the a) historical period (1980-2004), b) near future period 2025-2049 and c) far future 2075-2099 for Methoni.

Case study of Naxos



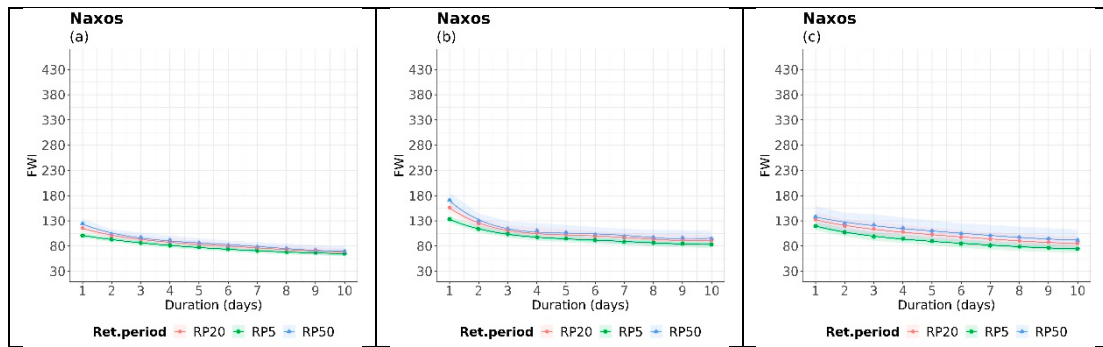


Figure S.7 Intensity-duration return period curves of the examined variables for 5,20 and 50 return periods, during the a) historical period (1980-2004), b) near future period 2025-2049 and c) far future 2075-2099 for Naxos.