

Supplementary Materials: Silicon and Nitrate Differentially Modulate the Symbiotic Performances of Healthy and Virus-Infected *Bradyrhizobium*-nodulated Cowpea (*Vigna unguiculata*), Yardlong Bean (*V. unguiculata* subsp. *sesquipedalis*) and Mung Bean (*V. radiata*)

Maria Luisa Izaguirre-Mayoral, Miriam Brito, Bikash Baral and Mario José Garrido

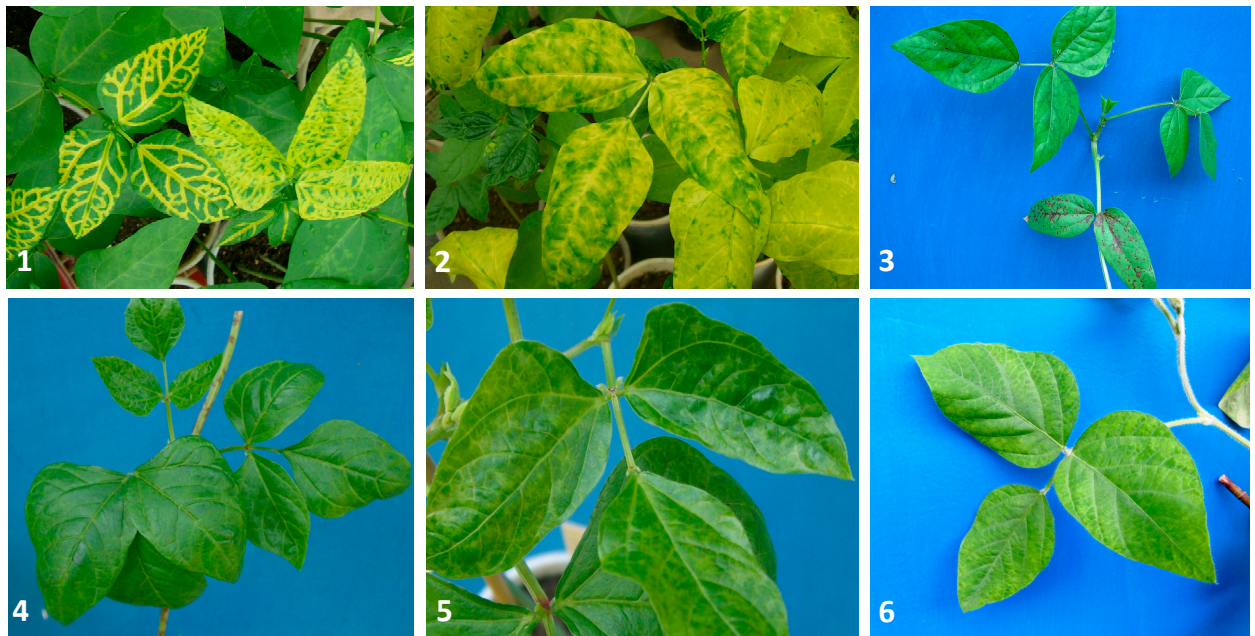


Figure S1. Upper photos: Symptoms elicited by *Cowpea chlorotic mottle virus* (CCMV) infection in cowpea (1), yardlong bean (2) and mung bean (3). Note in (3), the necrotic lesions in the CCMV-inoculated primary leaves. Lower photos: Symptoms elicited by *Cowpea mild mottle virus* (CMMV) infection in cowpea (4), yardlong bean (5) and mung bean (6).



Figure S2. *Bradyrhizobia*-nodulated roots of 20 days old *Vigna unguiculata*; (A) healthy plants root and (B) CCMV-infected plants root.