

Figure S1. 1.2% agarose gel electrophoresis detection of total RNA extracted from lingonberry.

Note: M is 2000bp DNA Marker; 1-17 are random selection of total RNA from tested lingonberry samples.

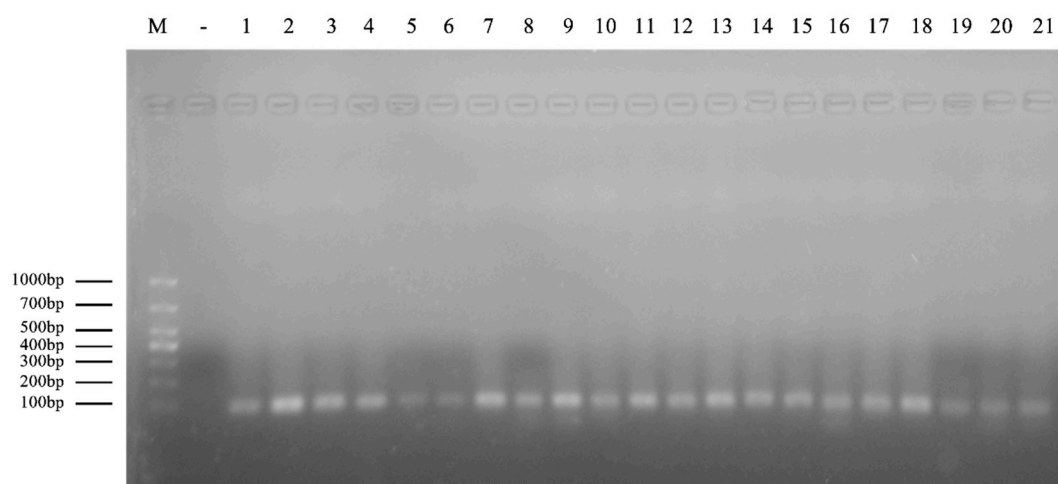


Figure S2. Products of qRT-PCR of 21 candidate reference genes.

Note: M: 1000bp DNA Marker; -: Negative control,

1-21: PCR Products (*Actin CL1167.Contig3_All*, *Actin CL2126.Contig2_All*, *Actin CL2172.Contig2_All*, *Actin CL2172.Contig3_All*, *Actin CL3559.Contig7_All*, *Actin CL494.Contig13_All*, *Actin CL5740.Contig1_All*, *Actin CL5740.Contig2_All*, *Actin CL5740.Contig5_All*, *Actin CL7856.Contig2_All*, *Actin Unigene12465_All*, *Actin Unigene20323_All*, *Actin Unigene23839_All*, *Actin Unigene6171_All*, *Chy Unigene26262_All*, *18S rRNA CL5051.Contig1_All*, *Tub CL1466.Contig3_All*, *Tub CL1466.Contig7_All*, *Tub CL3192.Contig5_All*, *Tub CL7489.Contig2_All*, *Tub Unigene3128_All*.)