

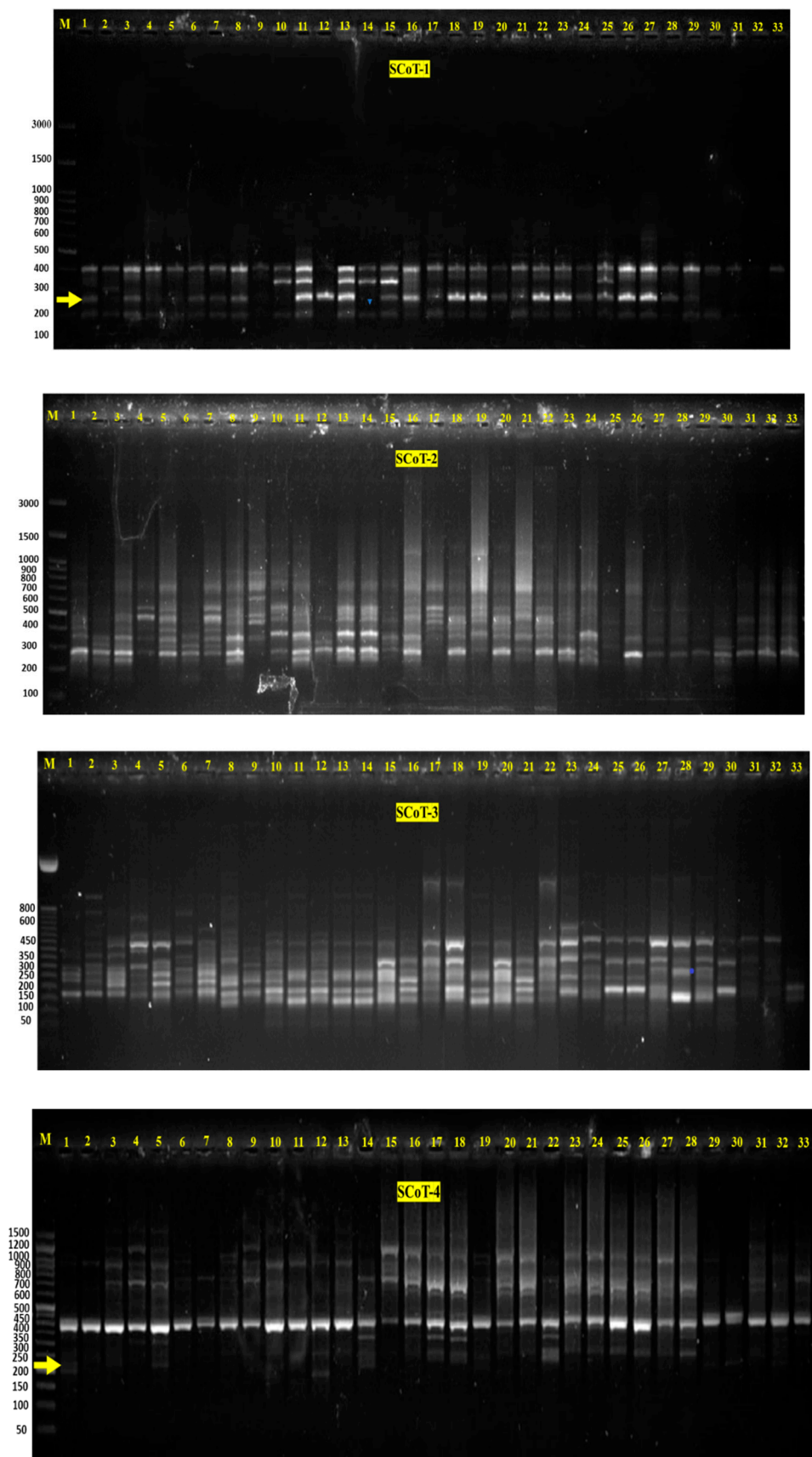
Tabel S1. Scaling test of the three crosses for the studied traits.

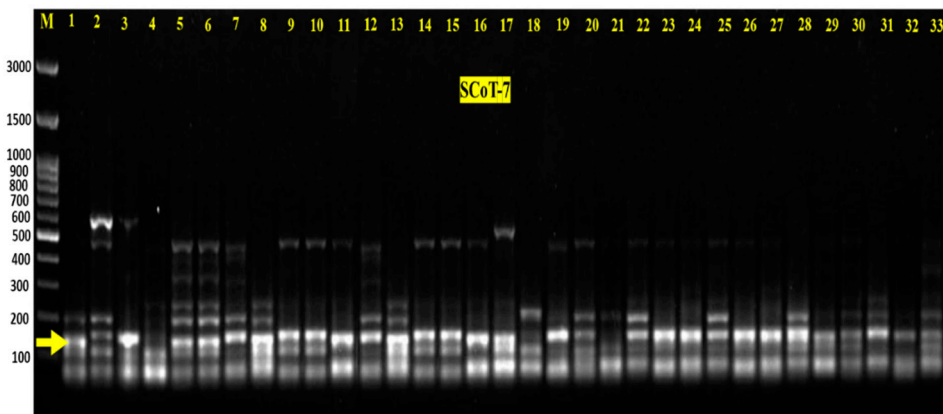
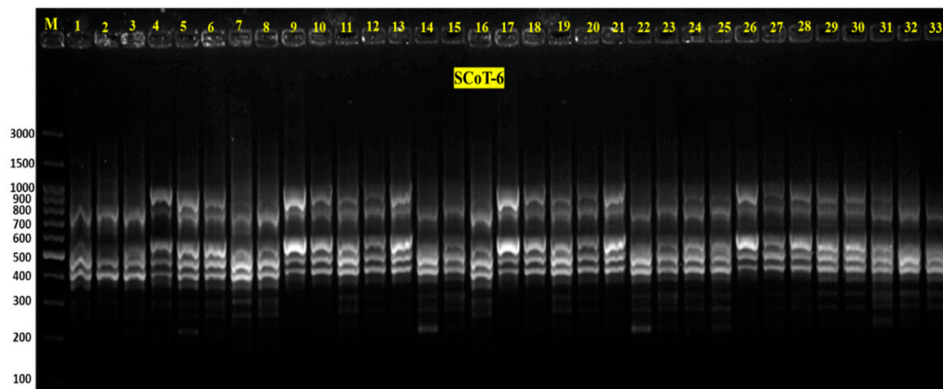
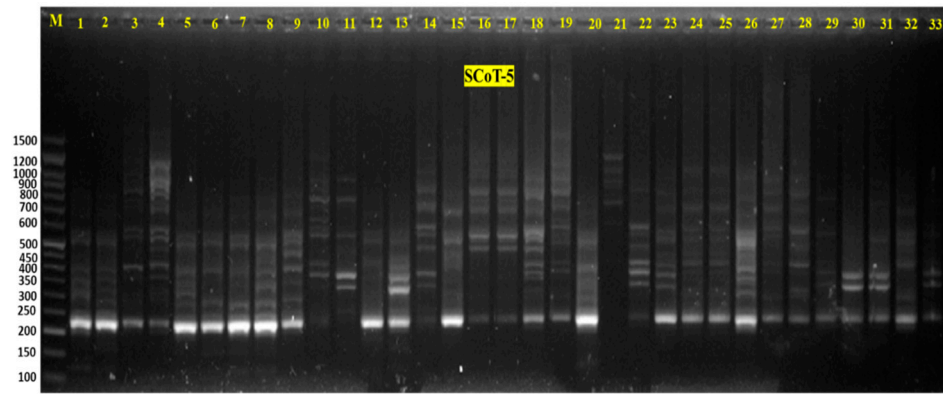
Traits	Crosses	Scaling test			
		A	B	C	D
Plant Height	Cross 1	40.33**	31.39**	34.32**	-18.70**
	Cross 2	-33.33**	-66.52**	-59.16	20.35
	Cross 3	-18.00**	-43.10**	-59.96**	0.57
No. of Branches/plant	Cross 1	-0.53	-3.98**	-7.45**	-1.47*
	Cross 2	0.67	0.86	0.37**	-0.58**
	Cross 3	2.13**	-0.97	1.71**	0.27
No. of Pods/Plant	Cross 1	-6.54	1.1	-60.64**	-27.60**
	Cross 2	-20.70**	-6.59	-7.99	9.65
	Cross 3	-2.83	5.07	-27.39**	-14.81**
No. of Seeds/Plant	Cross 1	26.4	14.11	-139.69**	-90.10**
	Cross 2	-71.40**	-56.77**	-54.73**	36.72**
	Cross 3	35.87**	-41.81**	-42.56**	-18.31**
Seed Yield/Plant	Cross 1	9.65	-6.42	-146.29**	-74.76**
	Cross 2	-65.93**	-24.98**	-53.57**	18.67**
	Cross 3	14.07	-31.51**	-33.27**	-7.91
Chocolate spot	Cross 1	0.34	2.18**	2.80**	0.14
	Cross 2	-2.33**	-3.68**	0.07	3.04**
	Cross 3	0.01	-2.93**	-1.26**	0.83**
Rust	Cross 1	-0.26	1.43**	0.65	-0.26
	Cross 2	-1.56**	-4.00**	-0.18	2.69**
	Cross 3	-3.70**	-1.13**	0.62	2.73**

Table S2. List of SCoT primers and their sequences.

Primer	Primer sequence (5' → 3')
SCoT-1	5'-ACGACATGGCGACCACGC-3'
SCoT-2	5'-ACCATGGCTACCACCGGC-3'
SCoT-3	5'-ACGACATGGCGACCCACA-3'
SCoT-4	5'-CAATGGCTACCACTAGCG-3'
SCoT-5	5'-CAATGGCTACCACTACAG-3'
SCoT-6	5'-ACAATGGCTACCACTGAC-3'
SCoT-7	5'-ACGACATGGCGACCCAC-3'

Figure S1. SCoT-PCR amplification using the selected primers





[illegible]