

Figure S1: The volcano diagram of DEGs

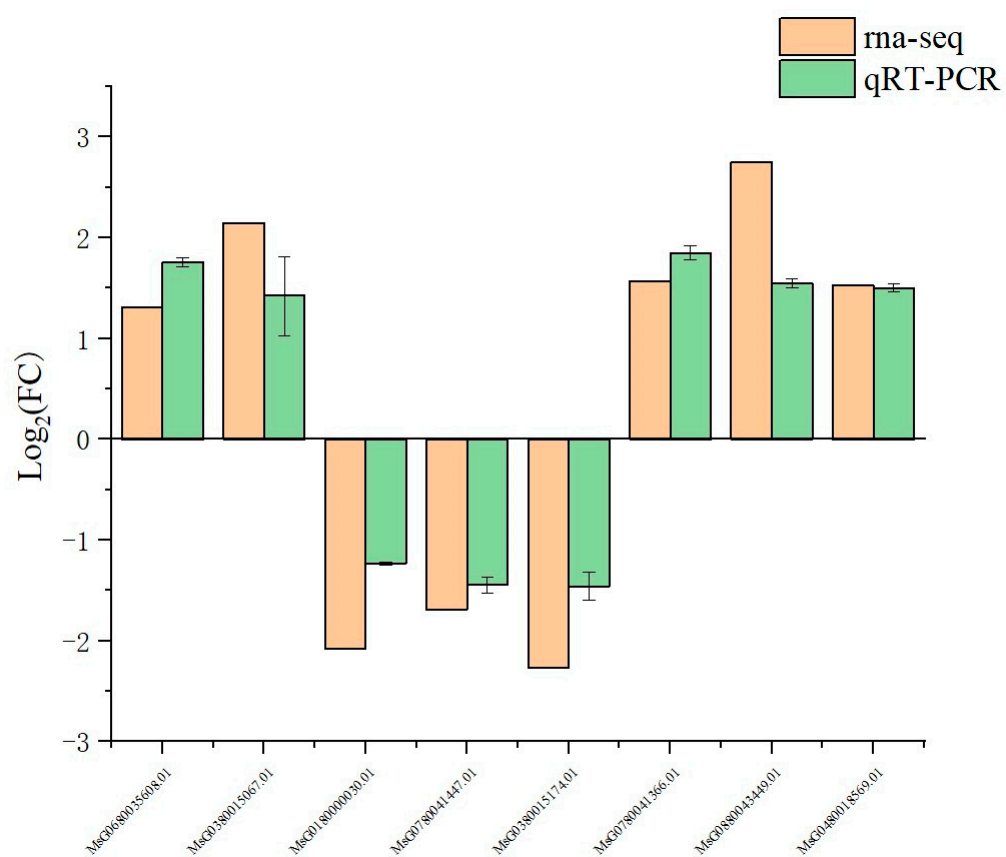


Figure S2: The qRT-PCR verification of selected genes

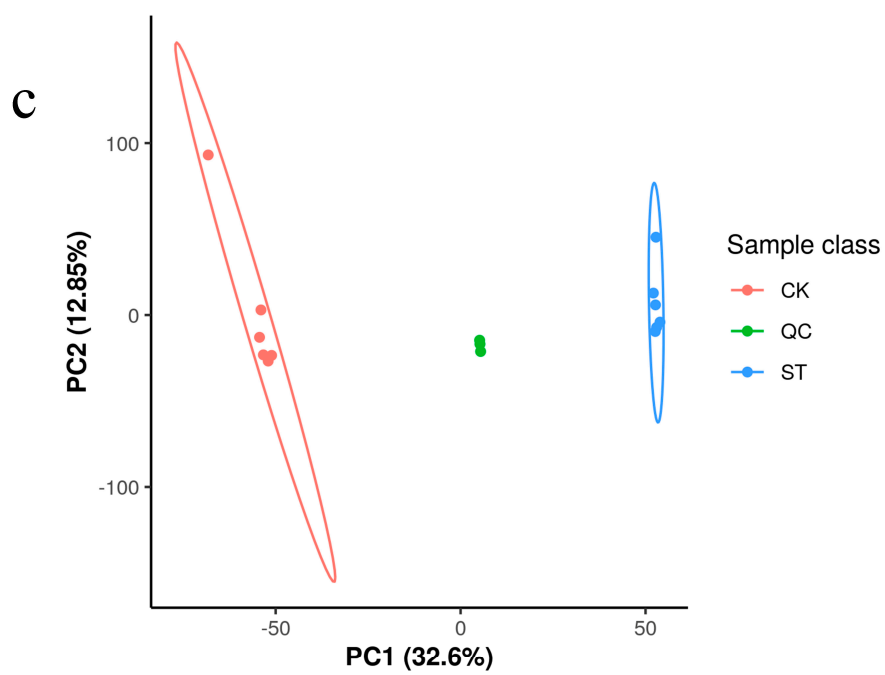
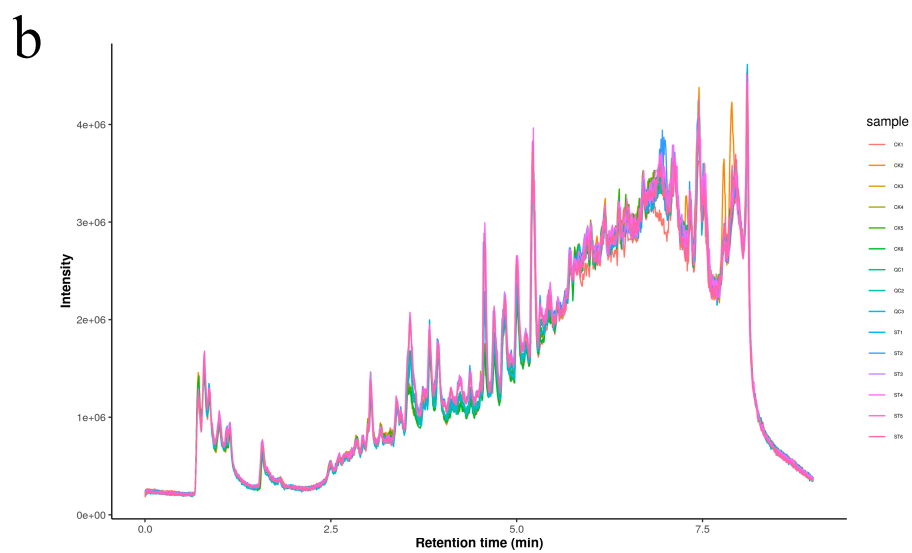
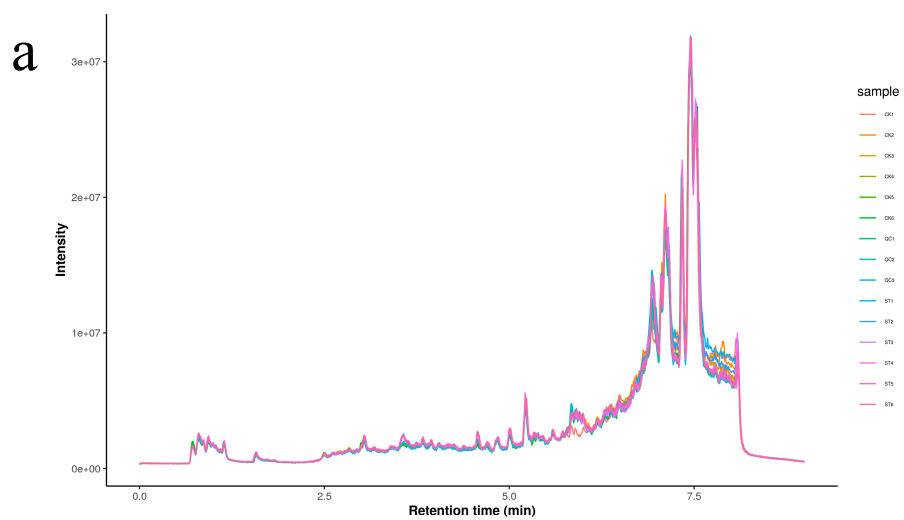


Figure S3: The positive (a) and negative (b) total ion flow chromatogram diagram and the PCA analysis (c) of alfalfa samples

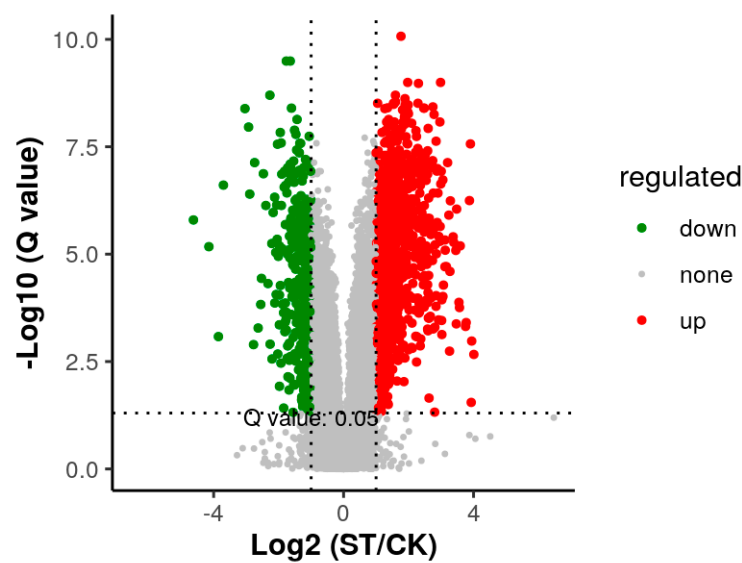


Figure S4: The volcano diagram of DEMs

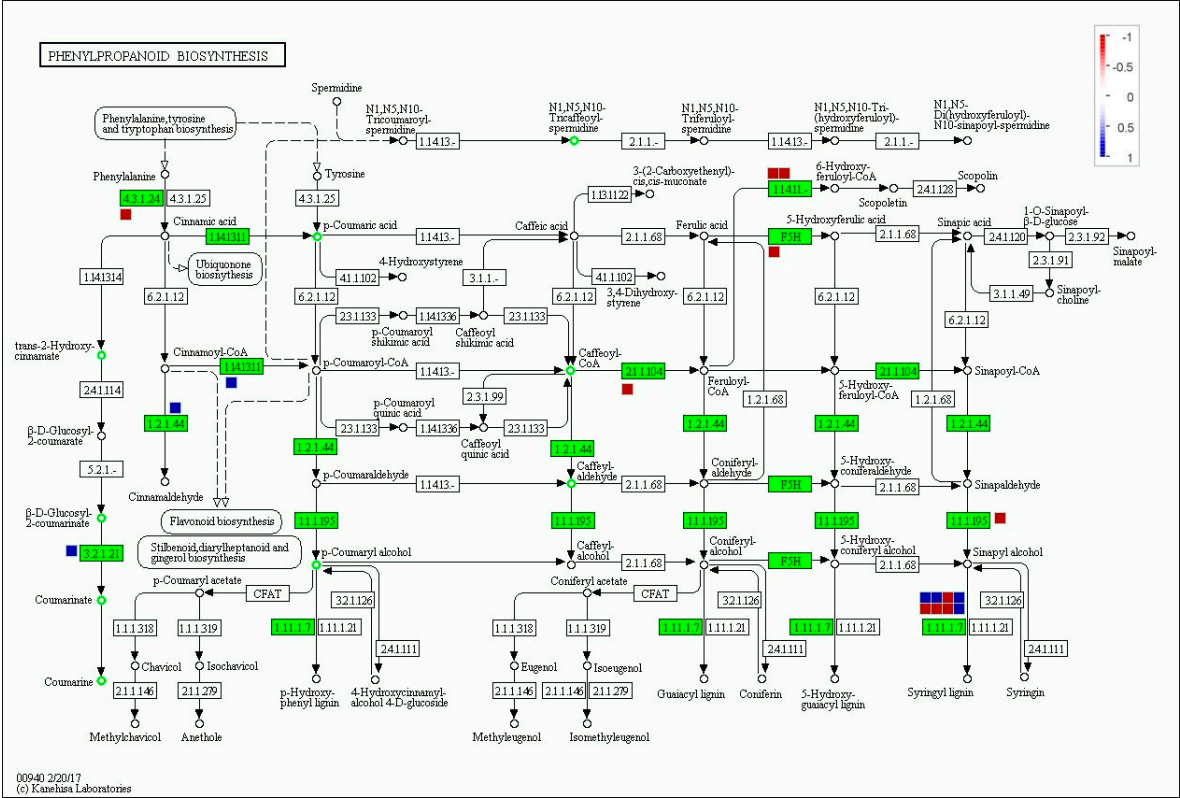


Figure S5: The DEGs and DEMs in phenylpropanoid biosynthesis pathways