

Supplementary Materials

for

GC, GC/MS analysis and biological effects of essential oils from *Thymus mastichina* and *Elettaria cardamomum*

Nenad L. Vukovic ^{1*}, Milena D. Vukic ¹, Ana D. Obradovic ², Milos M. Matic ², Lucia Galovičová ³, Miroslava Kačániová ^{3,4}

¹ Department of Chemistry, Faculty of Science, University of Kragujevac, 34000 Kragujevac, Serbia

² Department of Biology and Ecology, Faculty of Science, University of Kragujevac, 34000 Kragujevac, Serbia

³ Institute of Horticulture, Faculty of Horticulture and Landscape Engineering, Slovak University of Agriculture, Tr. A. Hlinku 2, 94976 Nitra, Slovakia

⁴ Department of Bioenergy, Food Technology and Microbiology, Institute of Food Technology and Nutrition, University of Rzeszow, 4 Zelwerowicza St, 35601 Rzeszow, Poland

*Correspondence: nenad.vukovic@pmf.kg.ac.rs; Tel.: +381336223

Content

Figure S1. GC/MS chromatogram of series of n-alkanes (C₇–C₃₅) for calculation of Kovats retention indices for *T. mastichina* EO.

Figure S2. GC/MS chromatogram of *T. mastichina* EO for calculation of Kovats retention indices.

Figure S3. GC/MS chromatogram of series of n-alkanes (C₇–C₃₅) for calculation of Van Den Dool retention indices for *T. mastichina* EO.

Figure S4. GC/MS chromatogram of *T. mastichina* EO for calculation of Van Den Dool retention indices.

Figure S5. GC/MS chromatogram of series of n-alkanes (C₇–C₃₅) for calculation of Kovats retention indices for *E. cardamomum* EO.

Figure S6. GC/MS chromatogram of *E. cardamomum* EO for calculation of Kovats retention indices.

Figure S7. GC/MS chromatogram of series of n-alkanes (C₇–C₃₅) for calculation of Van Den Dool retention indices for *E. cardamomum* EO.

Figure S8. GC/MS chromatogram of *E. cardamomum* EO for calculation of Van Den Dool retention indices.

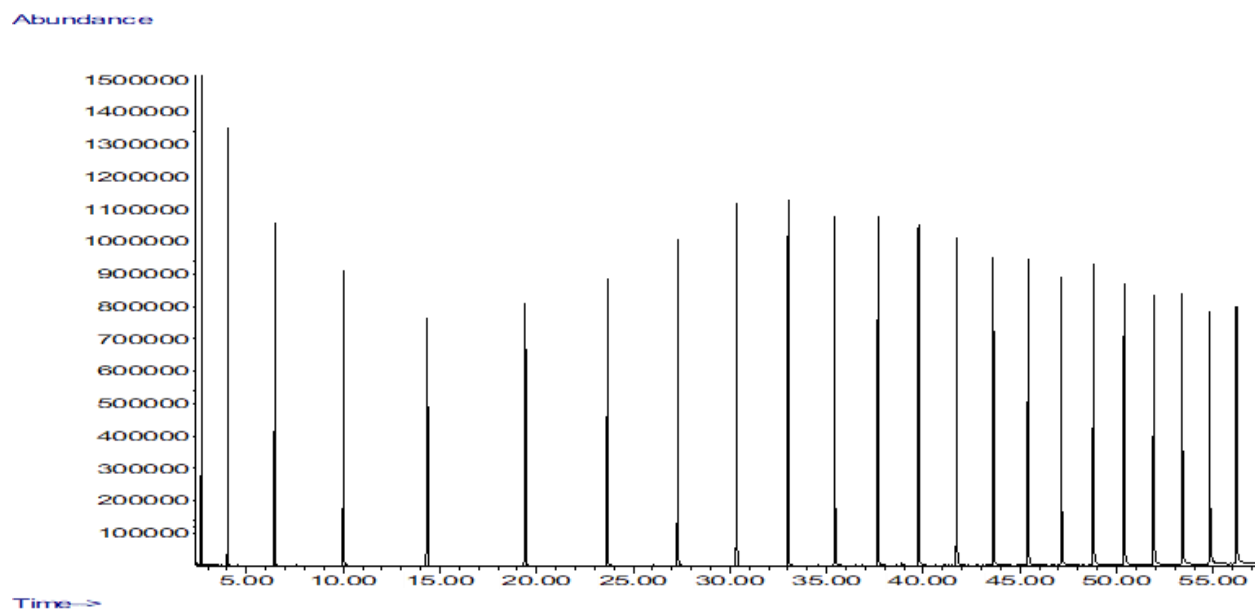


Figure S1. GC/MS chromatogram of series of n-alkanes (C₇–C₃₅) for calculation of Kovats retention indices for *T. mastichina* EO.

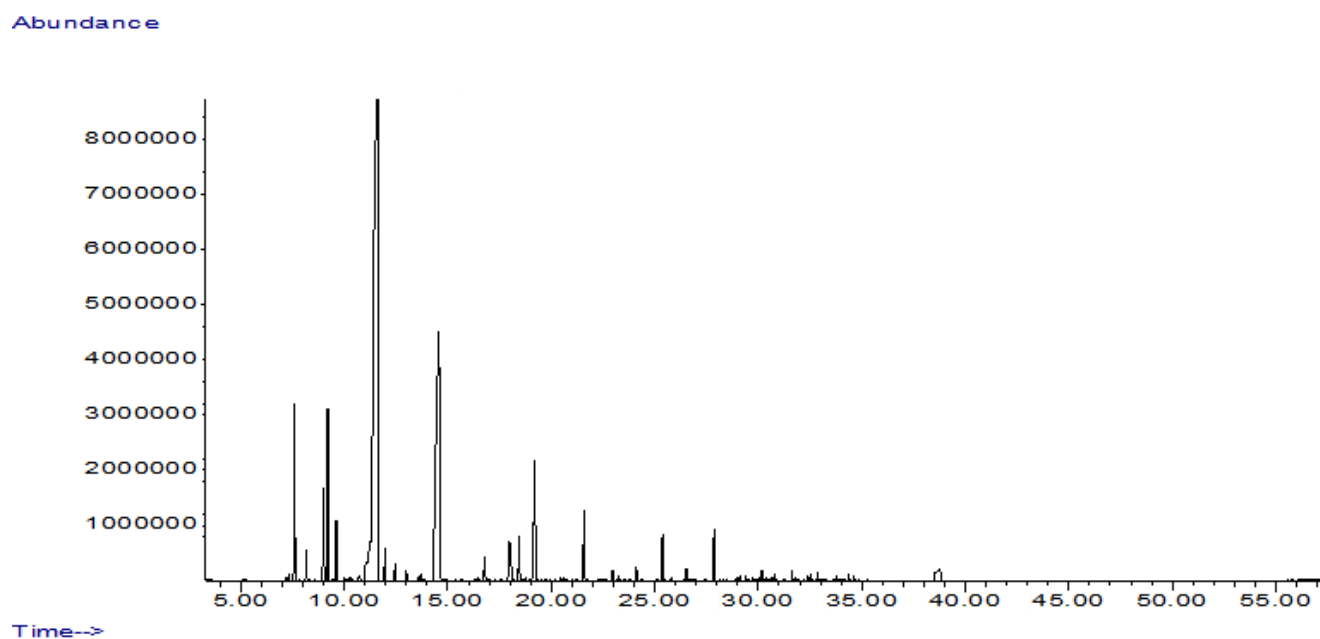


Figure S2. GC/MS chromatogram of *T. mastichina* EO for calculation of Kovats retention indices.

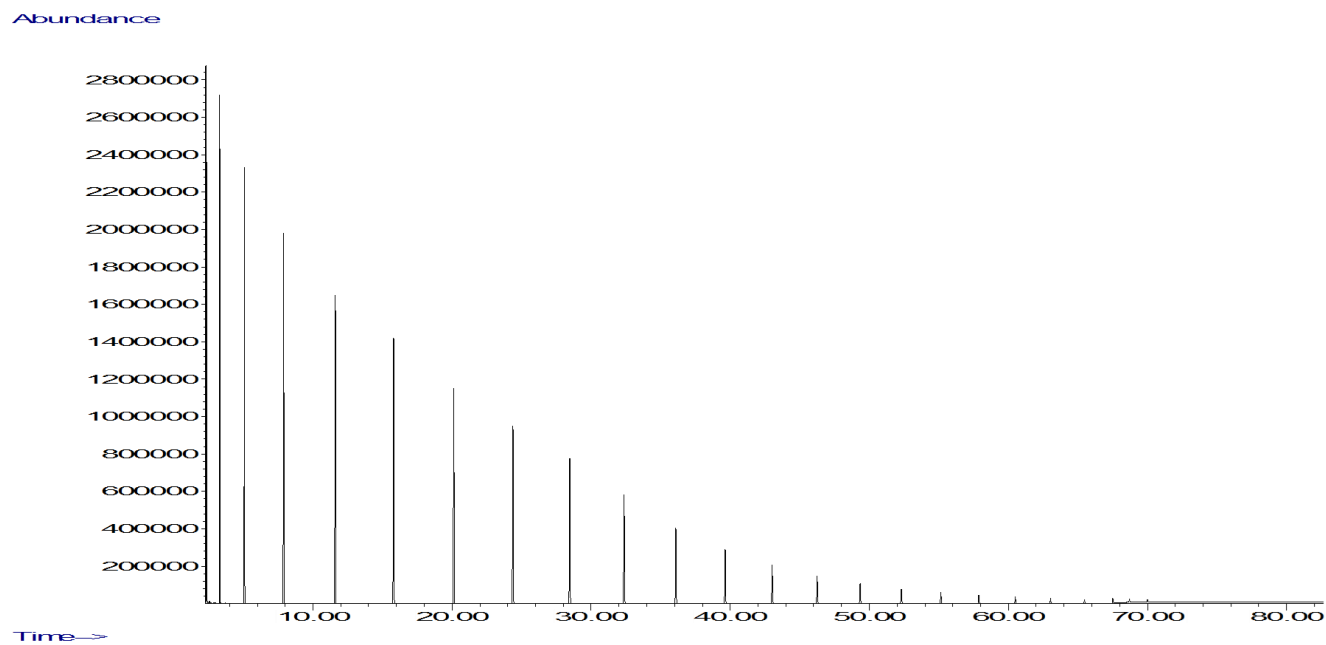


Figure S3. GC/MS chromatogram of series of n-alkanes (C₇–C₃₅) for calculation of Van Den Dool retention indices for *T. mastichina* EO.

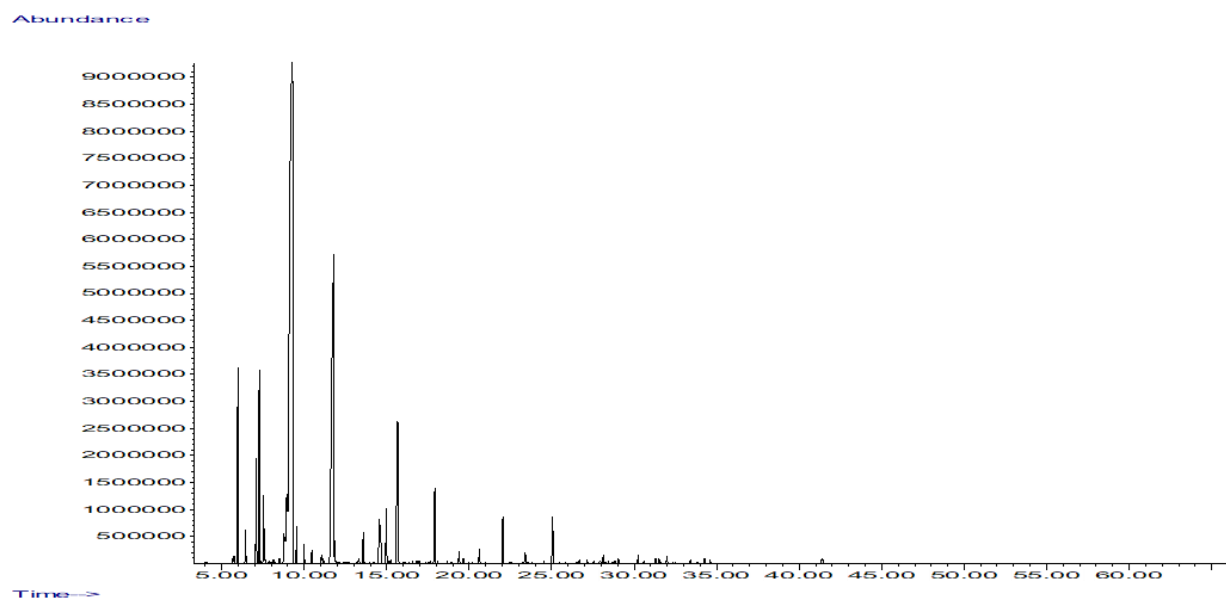
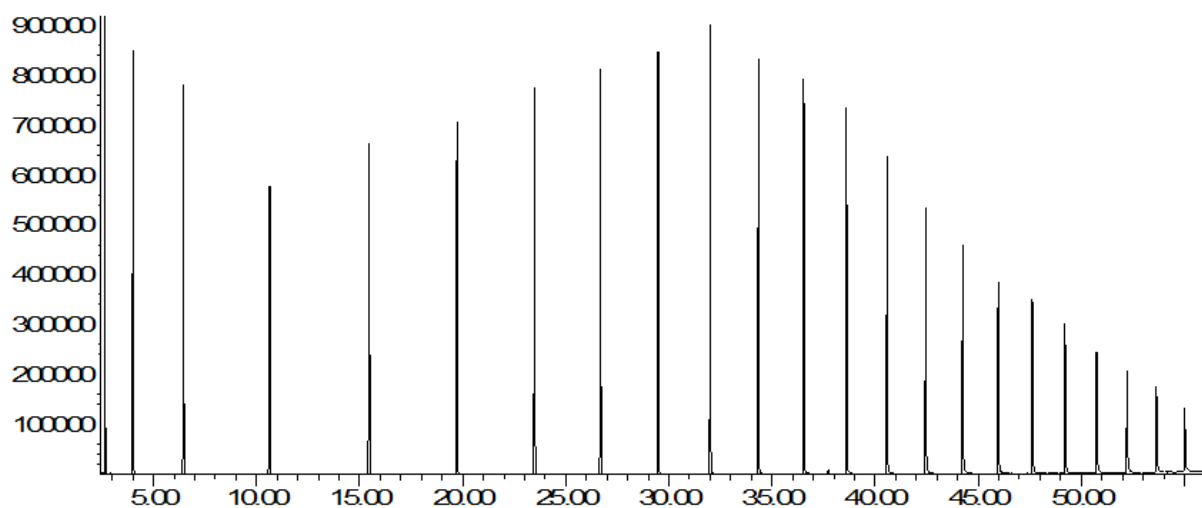


Figure S4. GC/MS chromatogram of *T. mastichina* EO for calculation of Van Den Dool retention indices.

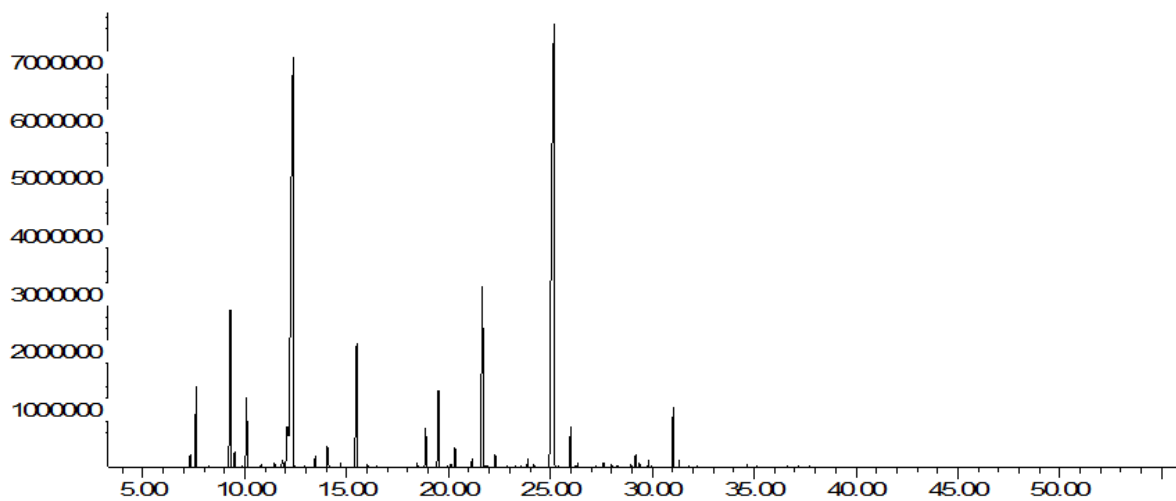
Abundance



Time→

Figure S5. GC/MS chromatogram of series of n-alkanes (C₇–C₃₅) for calculation of Kovats retention indices for *E. cardamomum* EO.

Abundance



Time→

Figure S6. GC/MS chromatogram of *E. cardamomum* EO for calculation of Kovats retention indices.

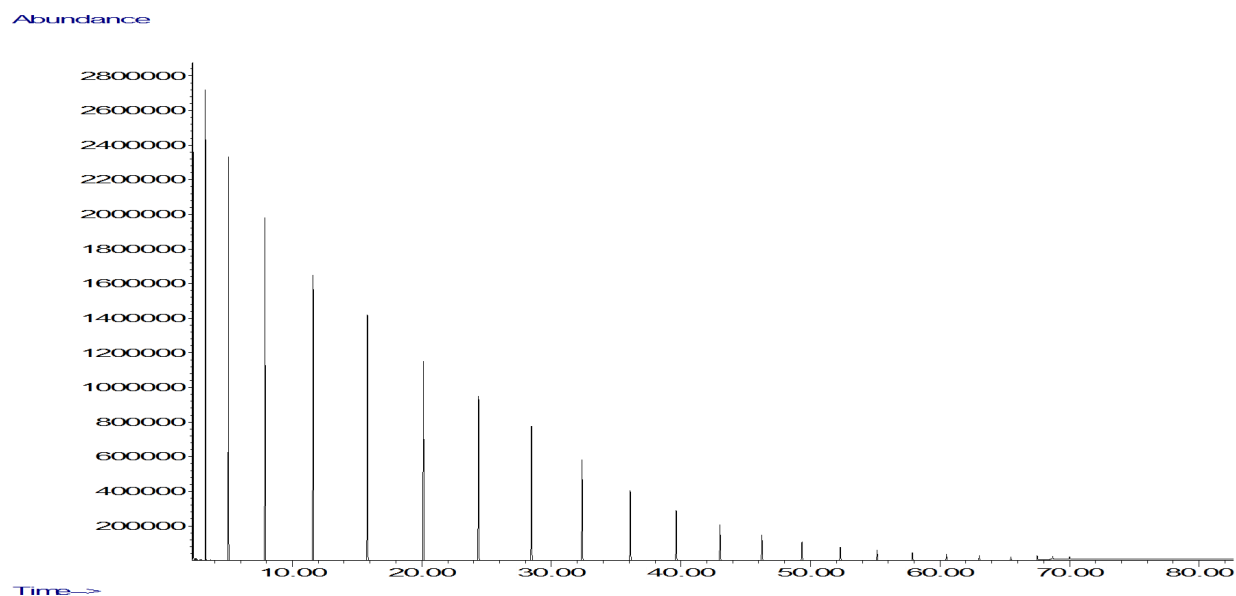


Figure S7. GC/MS chromatogram of series of n-alkanes (C₇-C₃₅) for calculation of Van Den Dool retention indices for *E. cardamomum* EO.

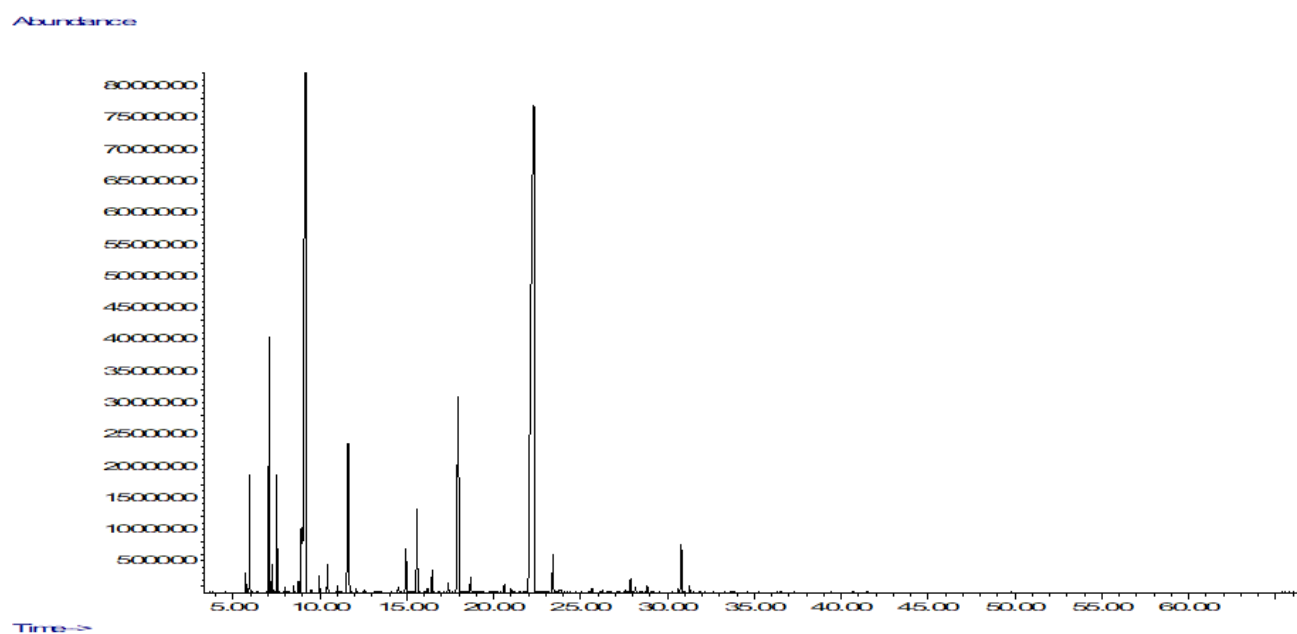


Figure S8. GC/MS chromatogram of *E. cardamomum* EO for calculation of Van Den Dool retention indices.