

## SUPPLEMENTARY DATA

### A Validated Method for the Determination of Carnosic Acid and Carnosol in the Fresh Foliage of *Salvia rosmarinus* and *Salvia officinalis* from Greece

Charikleia Paloukopoulos and Anastasia Karioti \*

Laboratory of Pharmacognosy, School of Pharmacy, Aristotle University of Thessaloniki, University Campus,  
54124 Thessaloniki, Greece

**Table S1.** Extraction yield of carnosic acid and carnosol expressed as µg/g (fresh weight) in the samples of *S. rosmarinus* in different solvent in three individual extractions of the same sample.

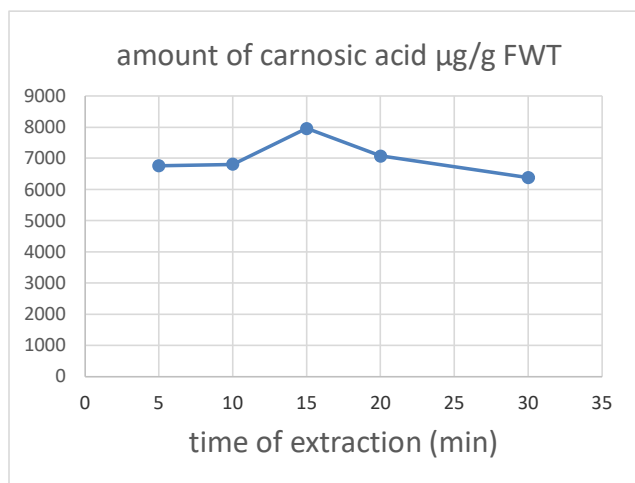
Extraction solvent	Carnosic acid (µg/g FWT) (%RSD)	Carnosol (µg/g FWT) (%RSD)
Methanol	7314.21 ± 445.03 (6.08)	4345.93 ± 431.29 (9.92)
Ethanol 96%	6531.21 ± 1102.41 (16.88)	2725.35 ± 492.59 (18.07)
Acetone	7913.33 ± 275.79 (3.49)	2843.31 ± 3.33 (1.17)

**Table S2.** Accuracy data of the HPLC method at three concentration levels based on carnosic acid and carnosol.

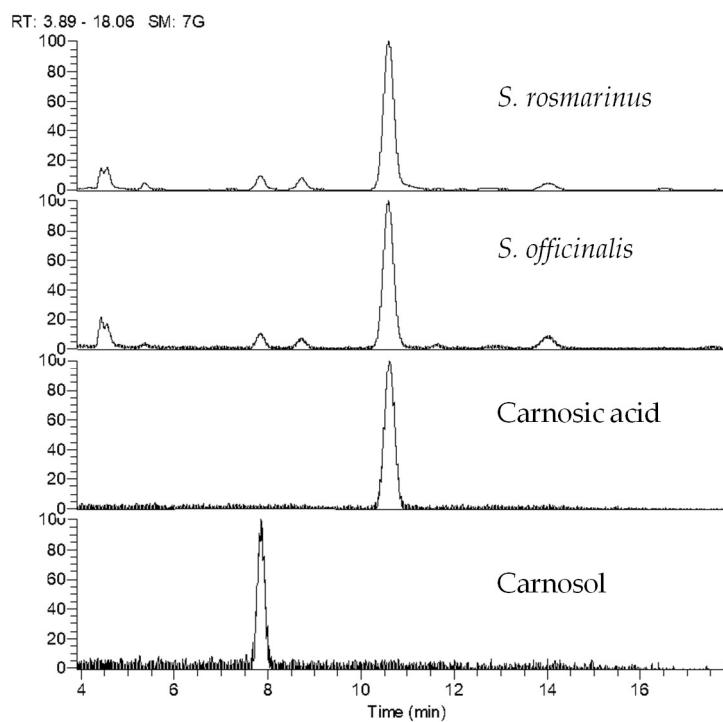
Compound	Found (µg)	Added (µg)	Recovery (%)	RSD (% , n = 3)
<b>carnosic acid</b>				
High	0.389	0.410	94.5	1.82
Medium	0.209	0.205	101.8	0.46
Low	0.108	0.103	105.3	3.28
<b>carnosol</b>				
High	0.068	0.064	105.8	0.49
Medium	0.031	0.032	97.0	1.88
Low	0.015	0.016	98.9	4.74

**Table S3.** Accuracy data of the overall method based on carnosic acid and carnosol.

Compound	Found (µg)	Added (µg)	Recovery (%)	RSD (% , n=3)
<b>carnosic acid</b>				
High	0.26694	0.26292	101.5	4.74
Medium	0.12587	0.13145	95.8	2.61
Low	0.05591	0.06573	85.1	3.69
<b>carnosol</b>				
High	0.156	0.150	103.9	3.65
Medium	0.0752	0.0750	100.3	4.20
Low	0.0392	0.0375	104.6	0.62



**Figure S1.** Optimization of extraction time.



**Figure S2.** Representative chromatogram of rosemary and sage leaf extracts, carnosic acid and carnosol at 280 nm.