

Climate Change, Forest Fires, and Territorial Dynamics in the Amazon Rainforest: An Integrated Analysis for Mitigation Strategies

Nathalia Celis, Alejandro Casallas, Ellie Anne Lopez-Barrera, Martina Felician, Massimo De Marchi, Salvatore E. Pappalardo

Supplementary Material

Year	Path/Row	Date (dd/mm)
2013	7/60	23/11
	8/60	11/09
	8/59	11/09
2014	7/60	31/03
	8/60	19/12
	8/59	19/12
2015	7/60	26/09
	8/60	20/11
	8/59	20/11
2016	7/60	01/02
	8/60	11/03
	8/59	11/03
2017	7/60	19/02
	8/60	25/01
	8/59	25/01
2018	7/60	18/09
	8/60	09/09
	8/59	24/08
2019	7/60	25/02
	8/60	10/07
	8/59	04/05
2020	7/60	27/01
	8/60	22/03
	8/59	22/03
2021	7/60	29/01

	8/60	17/09
	8/59	28/05

Table S1. Satellite data specifications used in Cartagena del Chaira, Caquetá-Colombia.

Class ID	PBLCC Classification	Description
WAT	Water	Deep Water Bodies/Rivers (DWAT/SWAT)
SI	Snow	Snow/Ice
DWAT	Water	Deep Water Bodies/Rivers (DWAT/SWAT)
CL	Clouds	Clouds
SV	Shadowed Vegetation	Shadowed/Low Illuminated Vegetation
SS	Shadowed Soil	Shadowed Soil/Burnt Areas
SPV	Sparse Vegetation	Sparse Grassland/Sparse Shrub
OLD	Other Land Dark	Dark Soil/Rocks/Sand
OLL	Other Land Light	Light Soil/Rocks/Sand
TCD	Tree Cover Dark	Dense Forest/Dense Shrub
TCL	Tree Cover Light	Open Forest/Shrub
SHR	Shrub	Dense Shrub
GRS	Grassland	Dense Grassland/Open Shrub

Table S2. PBLCC Classification based on the work of Simonetti et al. (2014)

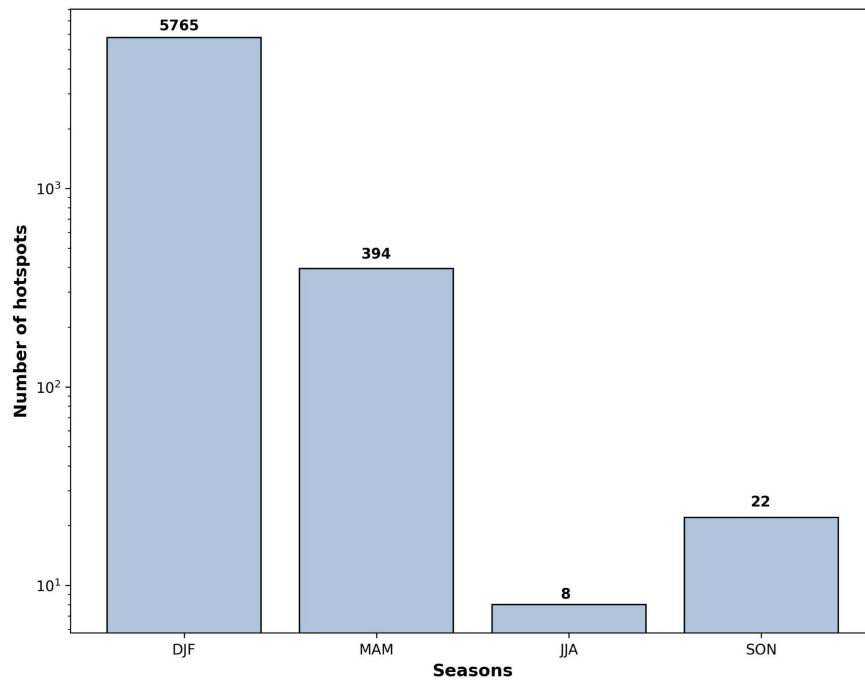


Figure S1. Seasonal number of hotspots in Cartagena del Chaira from 2010 to 2022. Notice that the y-axis has a logarithmic scale.

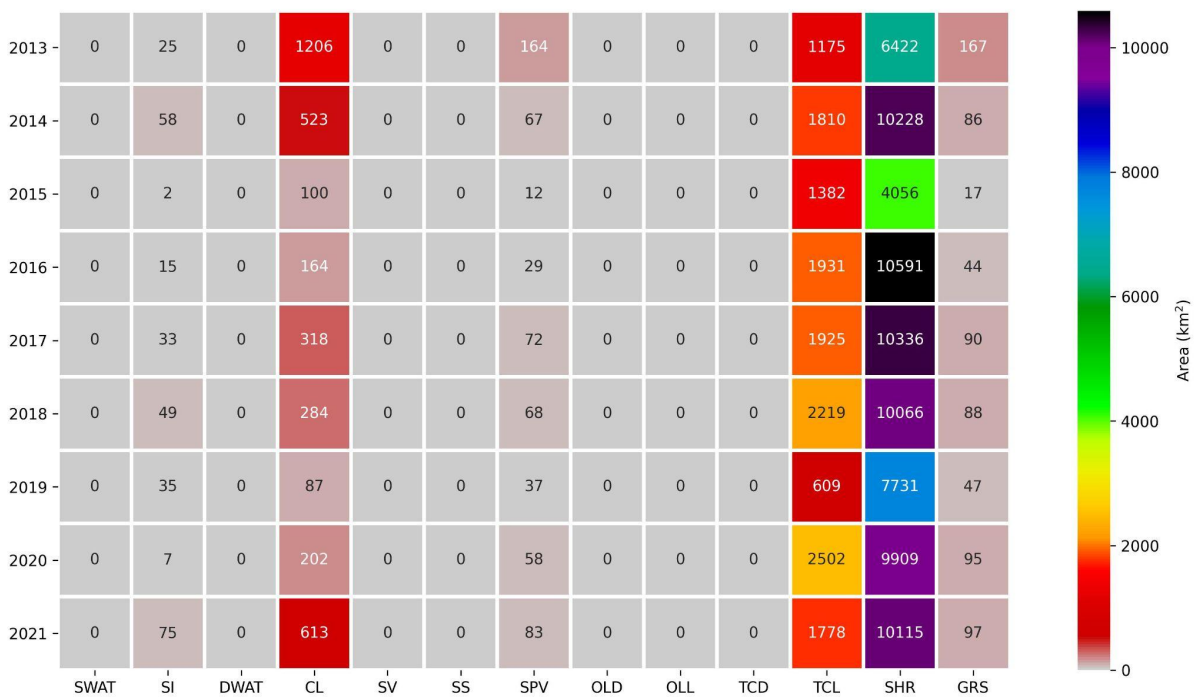


Figure S2. Area in km² of each land cover category from Simonetti et al. (2014). The nomenclature of the x-axis is described in Table S2.

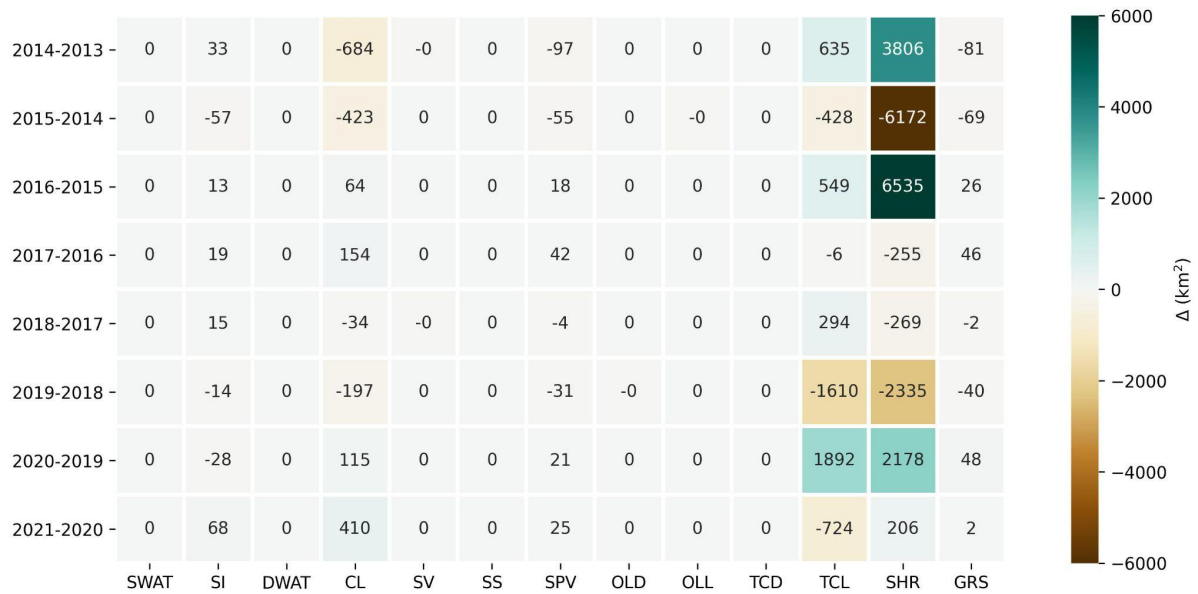


Figure S3. Land cover category changes per year in km^2 . The categories are from Simonetti et al.(2014). The nomenclature of the x-axis is described in Table S2.

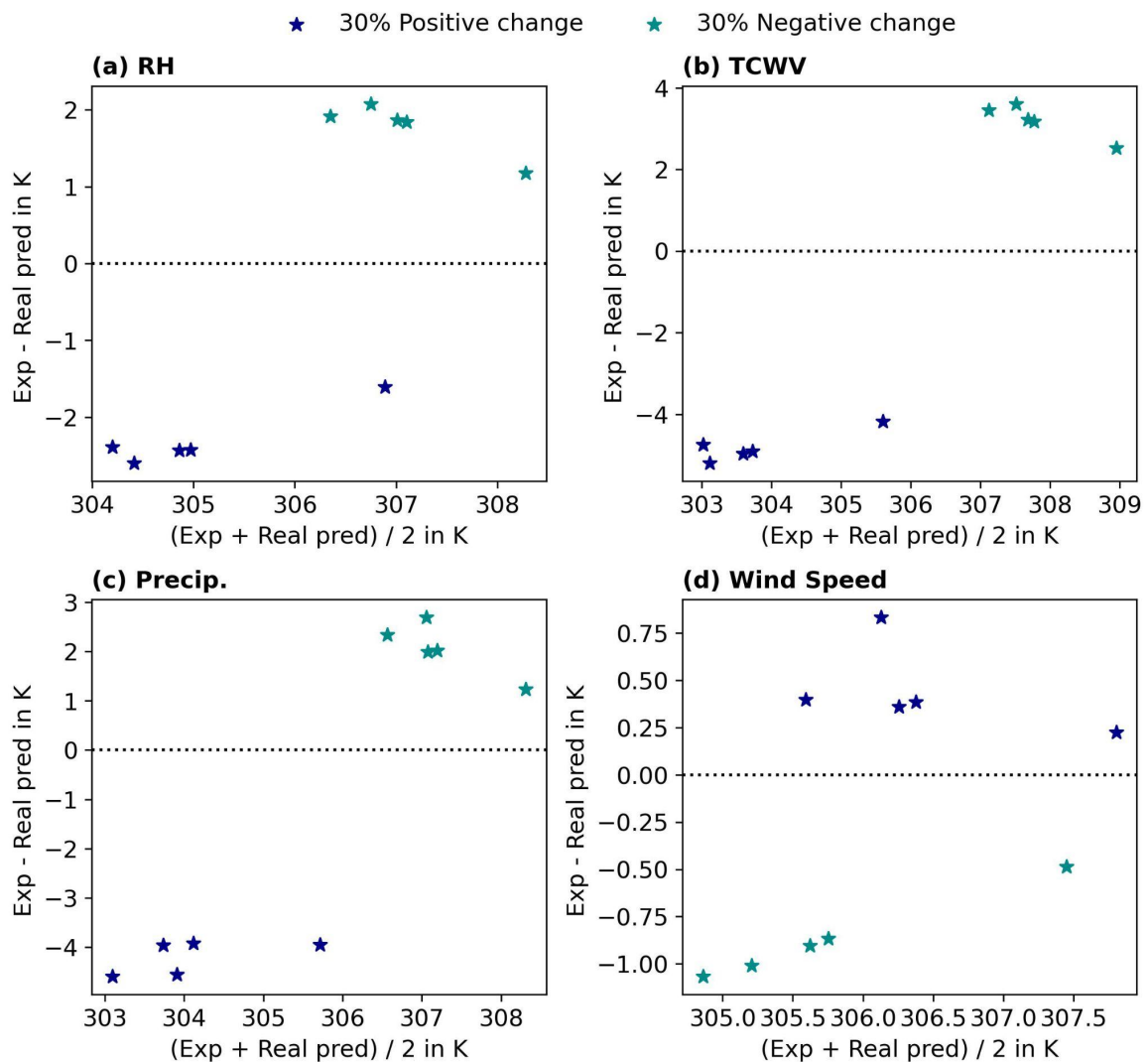


Figure S4. Experiments increasing (blue stars) and decreasing (green stars) by 30% the meteorological variables: (a) RH, (b) TCWV, (c) Precipitation, and (d) Wind Speed. For plotting purposes each star represents the mean of 10 wildfire events that present similar temperatures.