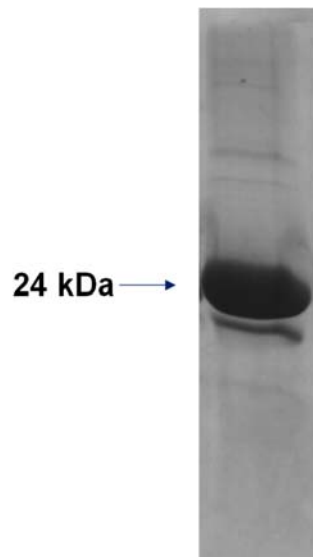
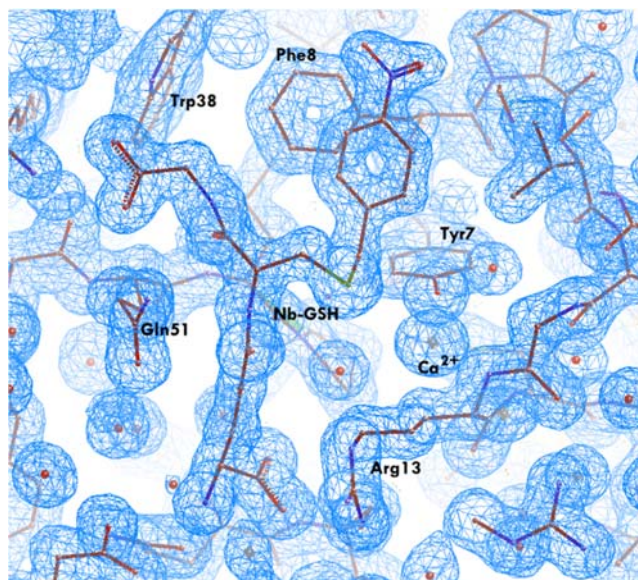


## Supplementary Materials



**Figure S1.** SDS-PAGE analysis of the eluted fraction of recombinant *Mm*GSTP1-1. Protein bands were stained with Coomassie Brilliant Blue R-250. *Mm*GSTP1-1 was purified by affinity chromatography using GSH-Sepharose as adsorbent.



**Figure S2.** SigmaA-weighted 2Fo-Fc electron density map of Nb-GSH with surrounding residues at 1 sigma level. The figure was created using Coot [1].

## References

[1]. Emsley, P.; Lohkamp, B.; Scott, W.G.; Cowtan, K. Features and development of Coot. *Acta Crystallogr D Biol Crystallogr*. 2010, 66, 486–501. doi: 10.1107/S0907444910007493. Epub 2010 Mar 24. PMID: 20383002; PMCID: PMC2852313.