

Supplementary Information

The promoting mechanism of the sterile fermentation filtrate of *Serratia odorifera* on *Hypsizygus marmoreus* by means of metabolomics analysis

Jixuan Cao ¹, Jiacheng Xie ¹, Mingming Yu ¹, Tao Xu ¹, Huangru Zhang ¹, Liding Chen ¹ and Shujing Sun ^{1, 2,*}

¹ College of Life Sciences, Fujian Agriculture and Forestry University, Fuzhou 350002, China; 2210514023@fafu.edu.cn (J.C.); 3200537080@fafu.edu.cn (J.X.); 1210514112@fafu.edu.cn (M.Y.); 3215413137@stu.fafu.edu.cn (T.X.); 3205403014@stu.fafu.edu.cn (H.Z.); chenliding@fafu.edu.cn (L.C.)

² Gutian Edible Fungi Research Institute, Fujian Agriculture and Forestry University, Ningde 352200, China

* Correspondence: shjsun2004@126.com

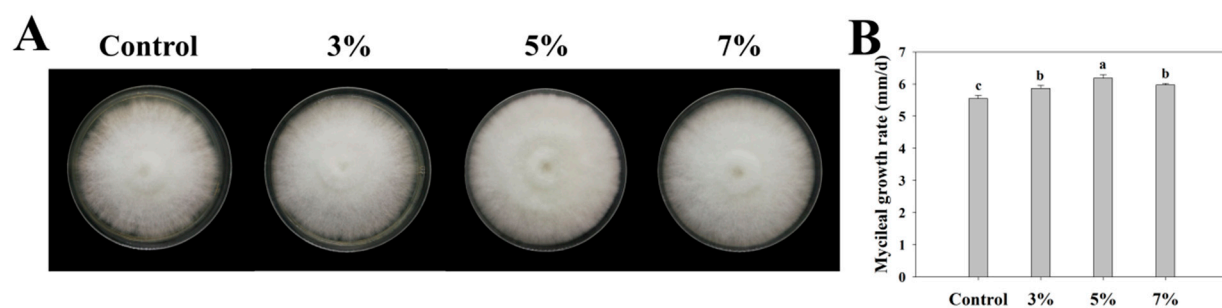


Figure S1 Effects of sterile fermentation broth of *S. odorifera* on the growth of *H. marmoreus* hyphae on the plate. (A) Diagram and (B) rate of growth of *H. marmoreus* hyphae (mm/d) after treatment with the sterile fermentation broth at different concentrations.

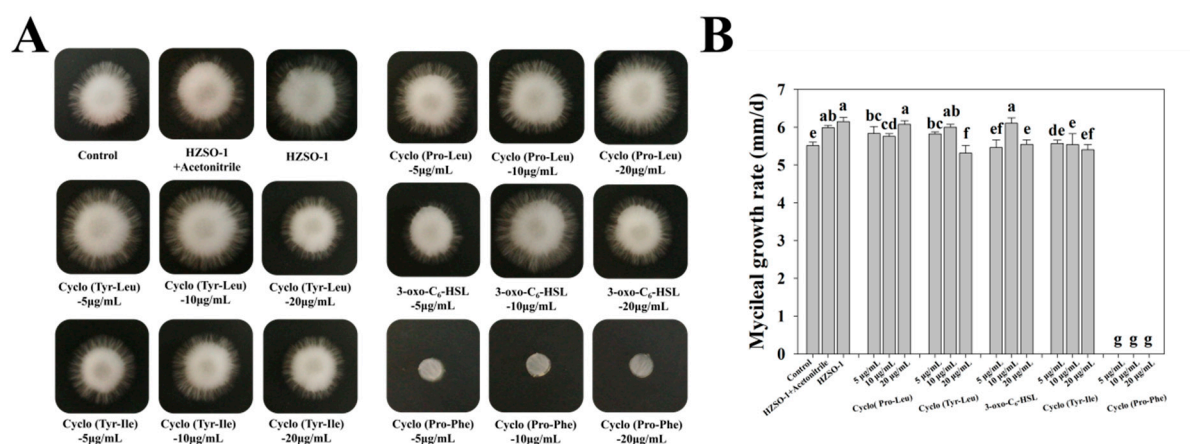


Figure S2 Effects of different signaling molecules on plate growth of *H. marmoreus* hyphae. (A) Diagram and (B) mycelial growth rate (mm/d) of different signaling molecule treatments on *H. marmoreus* growth.

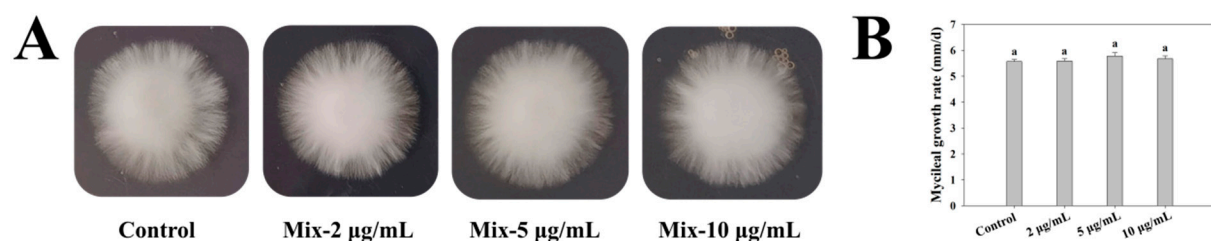


Figure S3 Effect of mixture (3-oxo-C₆-HSL: cyclo(Pro-Leu): cyclo(Tyr-Leu) in 1:1:1 ratio) on plate growth of *H. marmoreus* hyphae. (A) Graph and (B) mycelial growth rate (mm/d) at different concentrations.

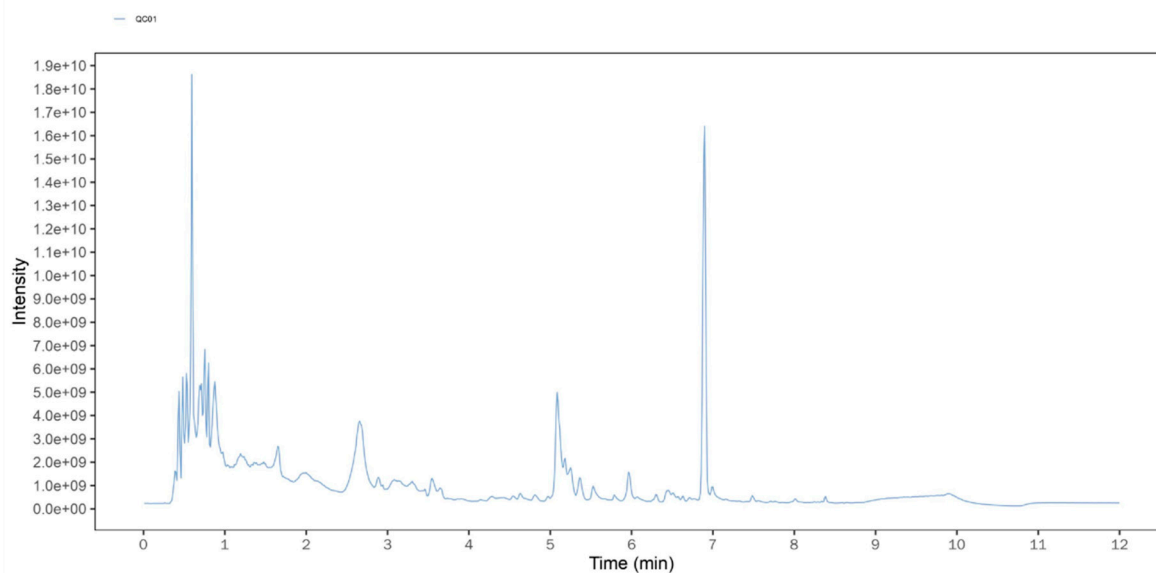
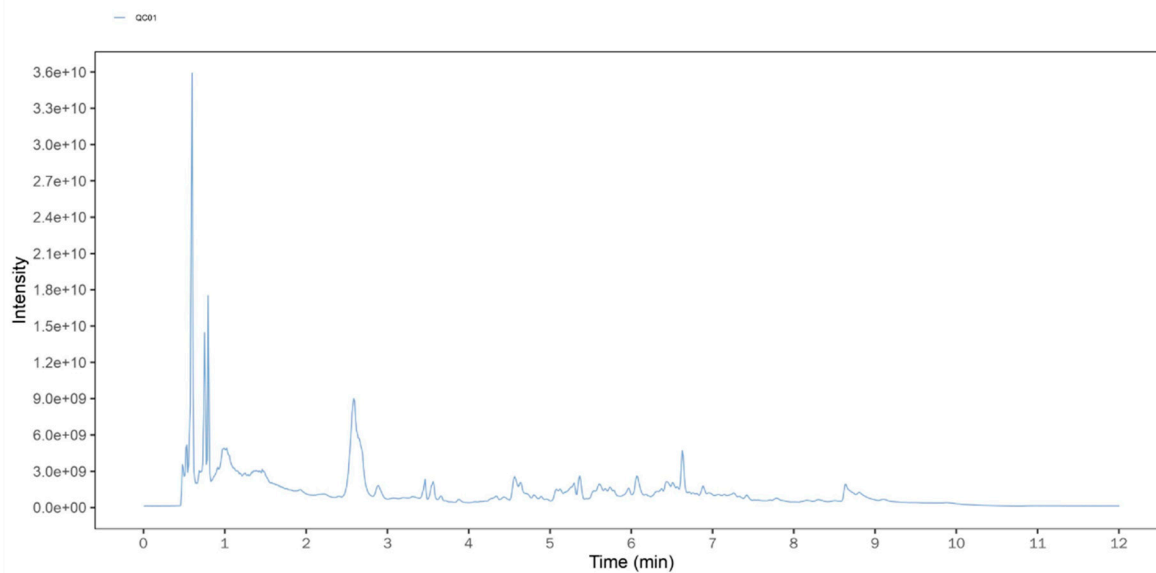
A**B**

Figure S4 Total ion chromatograph of the QC sample. (A) Positive ion mode and (B) negative ion mode.

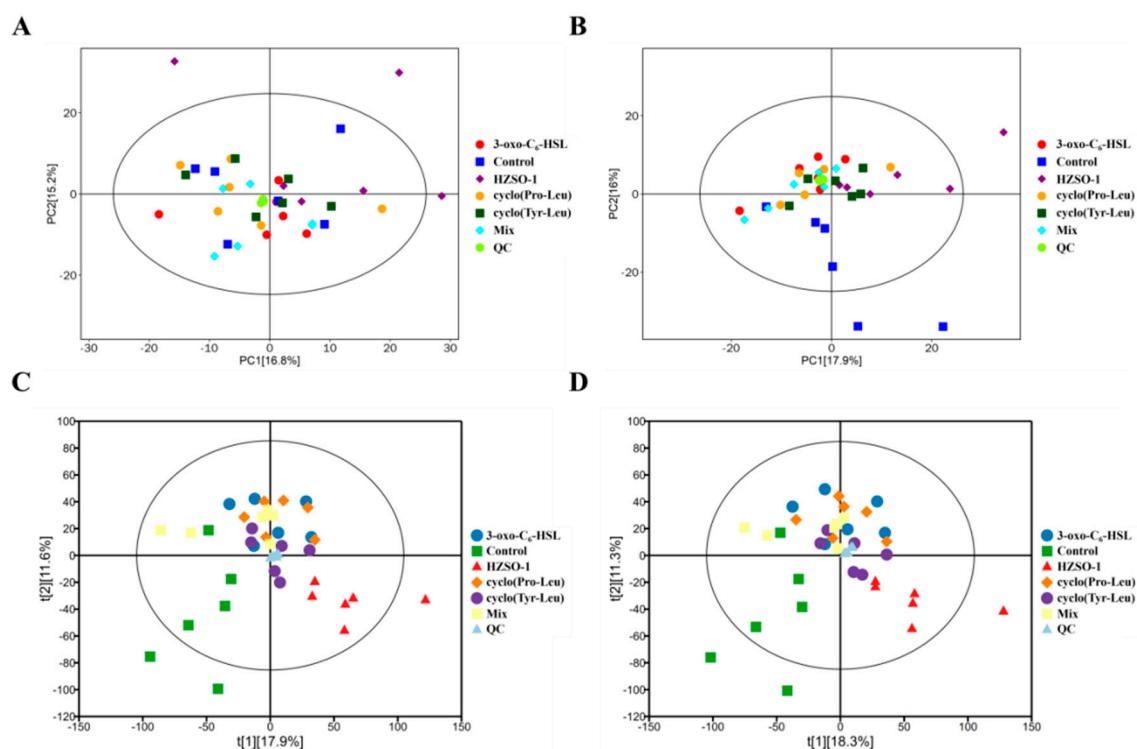


Figure S5 Multivariate statistical analysis of *H. marmoreus* mycelia. (A) PCA in positive ion mode; (B) PCA in negative ion mode; (C) PLS-DA in positive ion mode; (D) PLS-DA in negative ion mode.

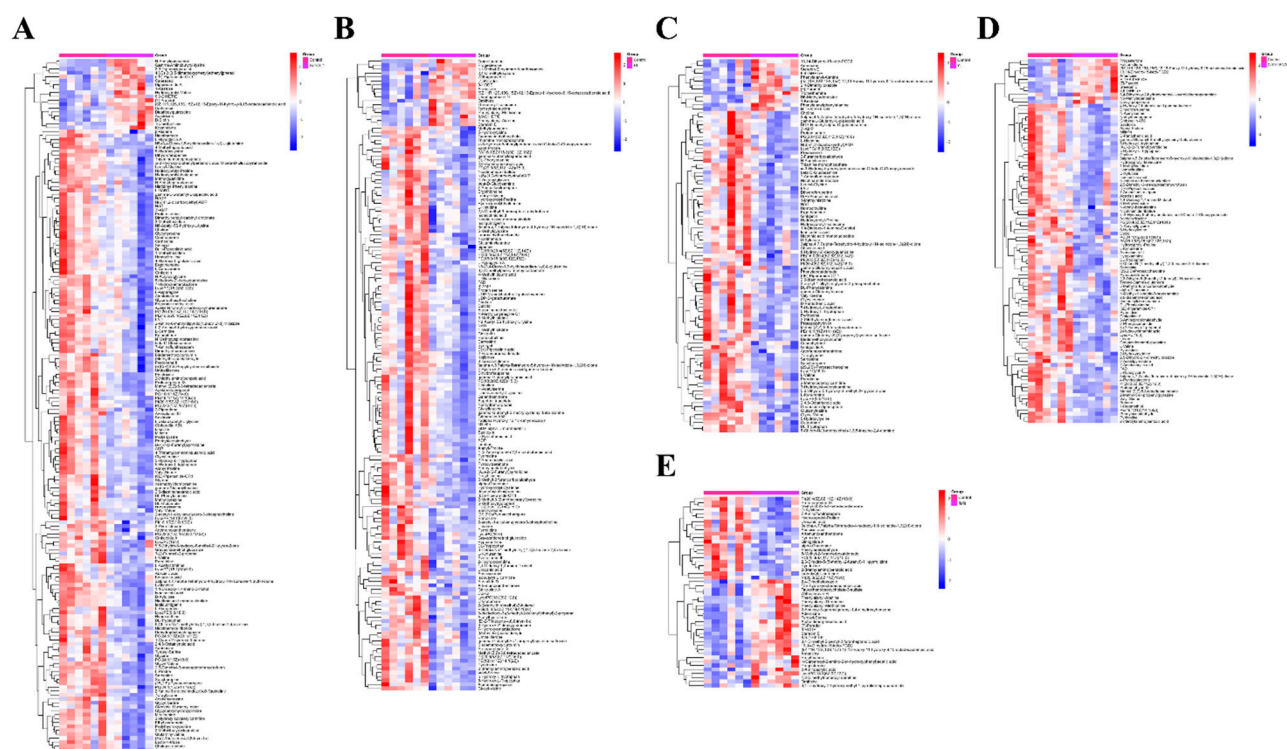


Figure S6 Heat maps of differential accumulation of metabolites in *H. marmoreus* mycelium sam-ples in five groups. (A) HZSO-1 vs. control; (B) cyclo(Pro-Leu) vs. control; (C) cy-clo(Tyr-Leu) vs. control; (D) 3-oxo-C6-HSL vs. control; (E) mix vs. control.

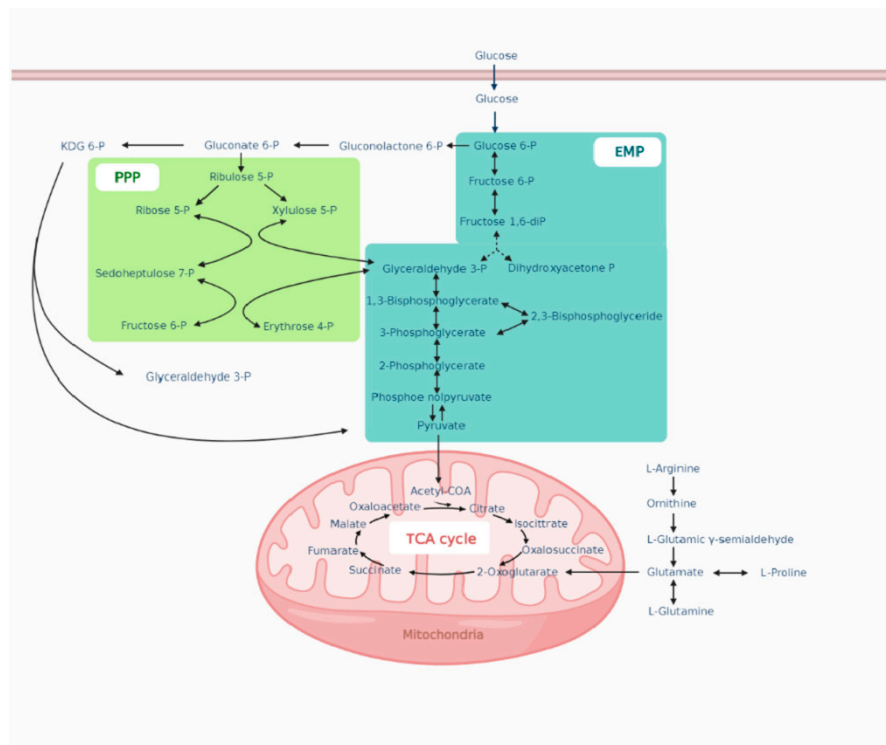


Figure S7 Schematic diagram of the metabolic pathways of carbohydrate and amino acid metabolism in *H. marmoreus* as influenced by the sterile fermentation filtrate of *S. odorifera*.