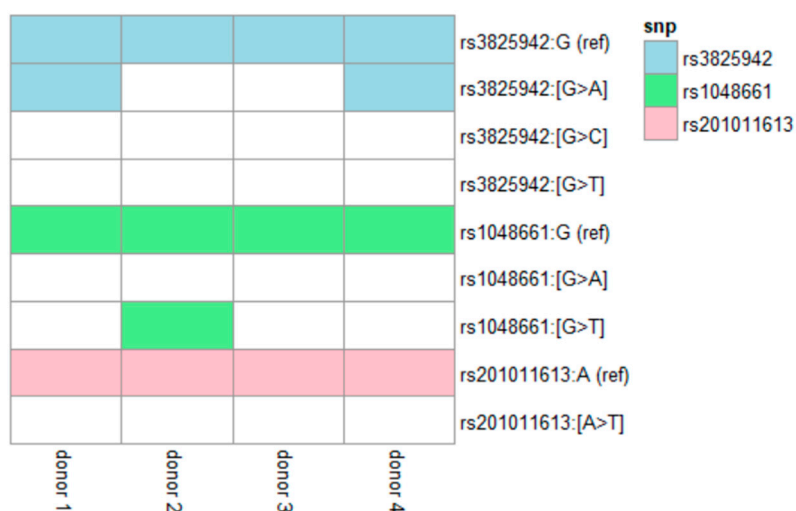


Supplemental Figure S1 of Genome-wide RNA sequencing of human trabecular meshwork cells treated with TGF- β 1 : relevance to pseudoexfoliation glaucoma

A



B

donor	sex
1	M
2	F
3	F
4	M

Figure S1. LOXL1 SNPs and sex of donors in this study (A) LOXL1 genotyping for several SNPs. Donors 1 and 4 were heterozygous for rs3825942:[G>A] while donor 2 was heterozygous for SNP rs1048661:[G>T]. Donor 3 was wild-type and did not have any of the studied SNPs. For rs201011613 all donors were wild-type (B) donor sex.