

Supplementary Materials

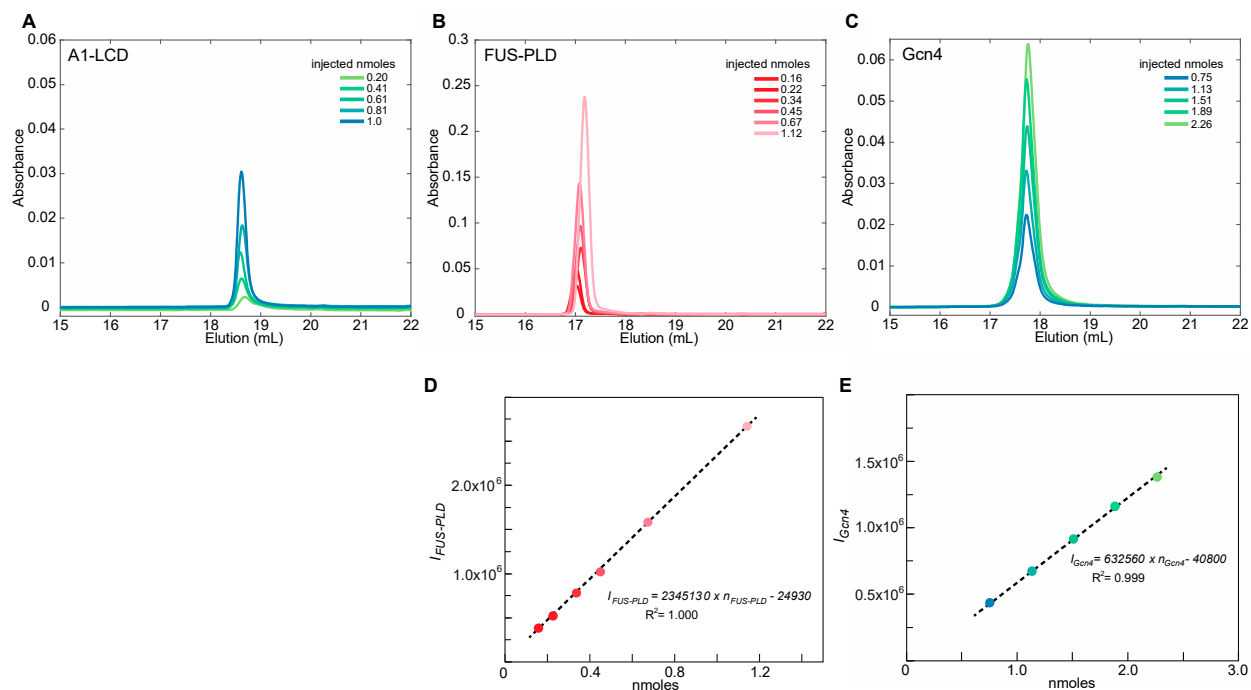


Figure S1. HPLC elution profile of (A) A1-LCD, (B) FUS-PLD and (C) Gcn4 were used to generate respective standard curves (D) and (E), where the ordinate is the area under the HPLC elution peak, and the abscissa is n , given in nmoles. For the A1-LCD standard curve, see Fig. 2.

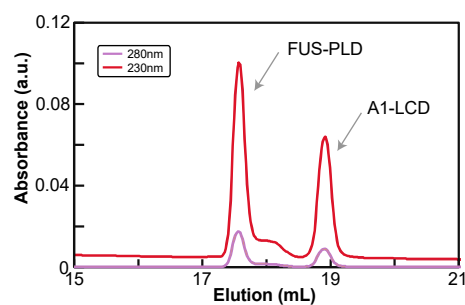


Figure S2. HPLC elution profile of A1-LCD and FUS-PLD monitored at 230 and 280 nm.