

Supplementary Material

Table S1. Circular dichroism spectrum data of Feleucin-K3 and its analogs in PBS and 50% TFE.

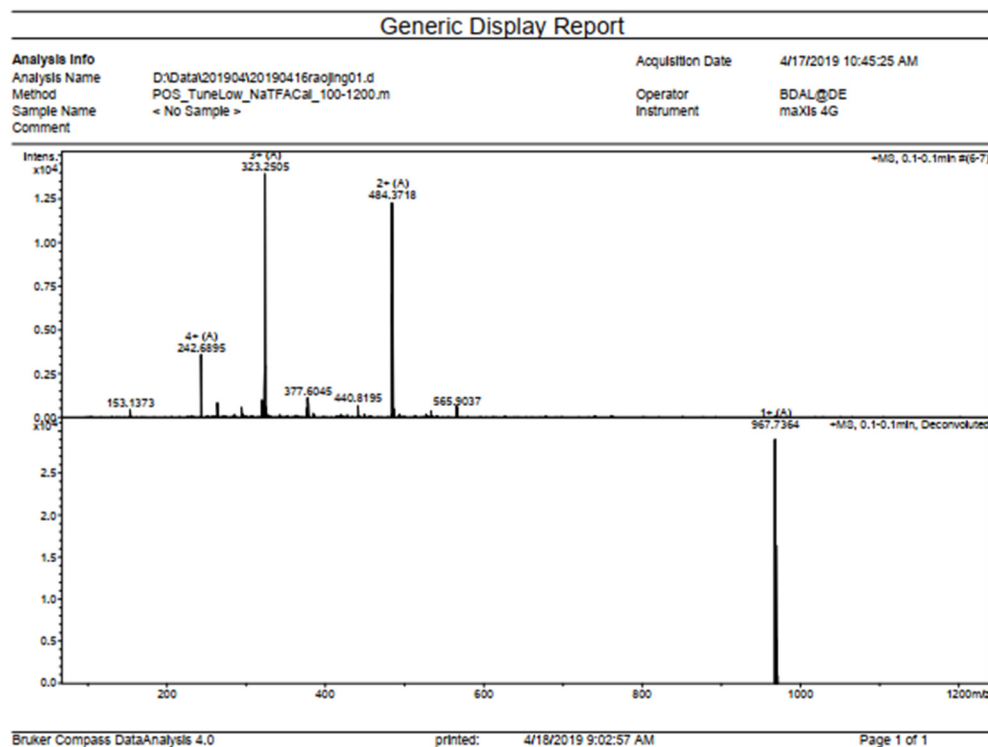
Peptide (% content ^a)	PBS	50%TFE
	β -strand	β -strand
Feleucin-K3	1.95	0.46
K63	10.51	16.41
K64	14.63	23.24
K65	11.12	23.56
K66	9.71	10.93
K67	12.82	18.86
K68	12.30	17.34
K69	10.28	24.08
K70	9.38	18.09
K71	20.20	21.99

^aThe α -helix and β -strand contents of the Feleucin-K3 analogs were estimated online by K2D3 tools.

2. Quality Data for Major Synthetic Peptides Used in This Study

2.1. MS and HPLC data for Feleucin-K63

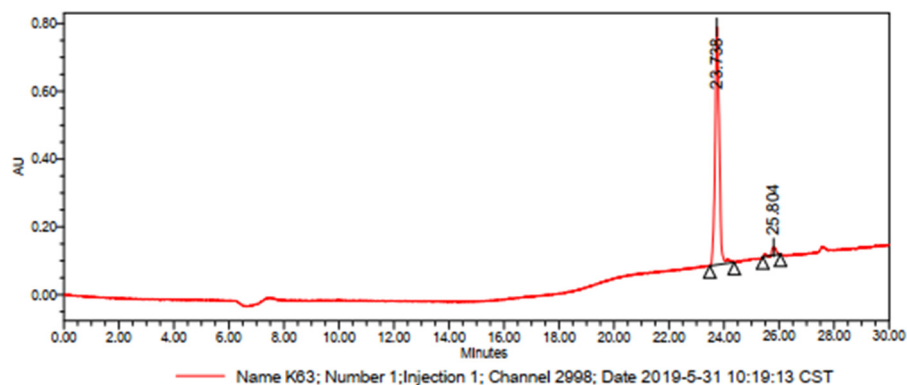
MS: expected mass: 968.3; Measured average mass: 967.7



Customer Peptide HPLC Report

Purity: 96.07%

Sample Information			
Name:	K63	Collector:	System
Type:	NO	Acquisition time:	2019-5-31 10:19:13 CST
Bottle number:	1	Method group:	0
Injection times:	1	Processing date:	2019-5-31 20:49:18 CST
Injection volume:	20.00 ul	Processing method:	0
Operation time:	30.0 Minutes	Channel name:	220.0 nm
		Channel annotation:	PDA 220.0 nm

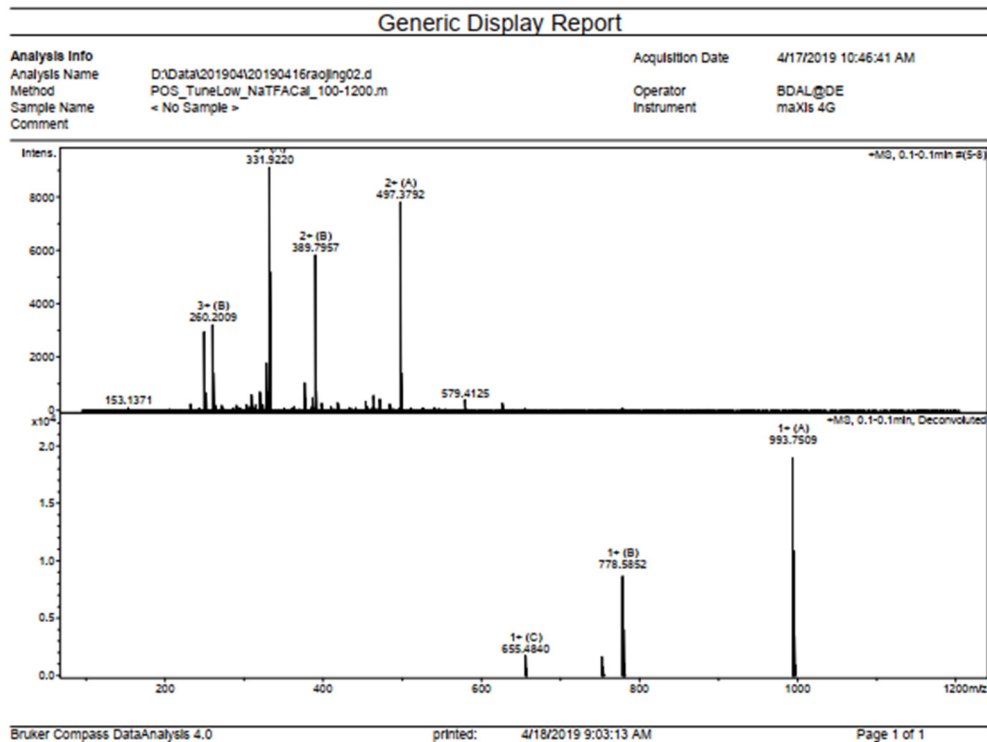


Channel: PDA 220.0 nm

	channel	retention time(min)	area	% area	peak height
1	PDA 220.0 nm	23.738	7339853	96.07	700906
2	PDA 220.0 nm	25.804	300423	3.93	23054

2.2. MS and HPLC data for Feleucin-K64

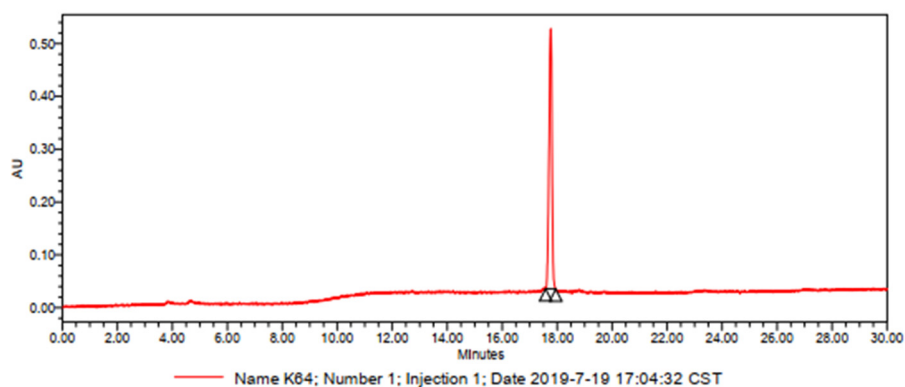
MS: expected mass: 994.5; Measured average mass: 993.8



Customer Peptide HPLC Report

Purity: 100.00%

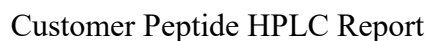
Sample Information			
Name:	K64	Collector:	System
Type:	NO	Acquisition time:	2019-7-19 17:04:32 CST
Bottle number:	1	Method group:	peptide
Injection times:	1	Processing date:	2019-7-19 20:37:23 CST
Injection volume:	20.00 ul	Processing method:	0
Operation time:	30.0 Minutes	Channel name:	220.0 nm
		Channel annotation:	PDA 220.0 nm



Channel: PDA 220.0 nm

	channel	retention time(min)	area	% area	peak height
1	PDA 220.0 nm	17.768	3728537	100.00	492610

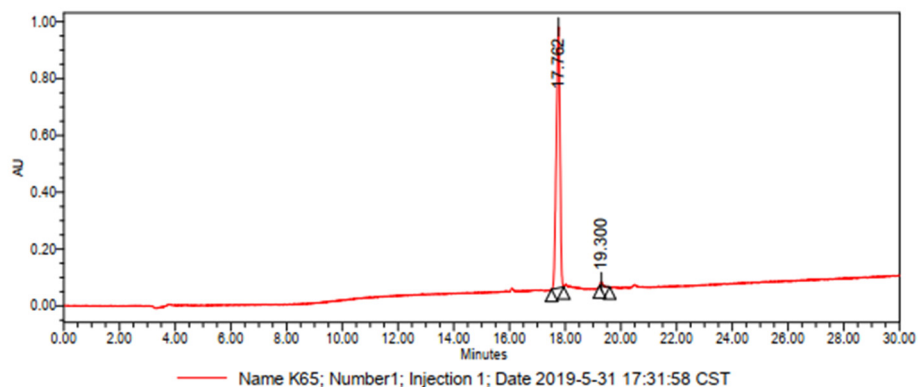
MS: expected mass: 1107.5; Measured average mass: 1106.8



Purity:98.90%

Name: K65
Type: NO
Bottle number: 1
Injection times: 1
Injection volume: 20.00 ul
Operation time: 30.0 Minutes

Collector: System
Acquisition time: 2019-5-31 17:31:58 CST
Method group: peptide
Processing date: 2019-5-31 20:58:09 CST
Processing method: 0
Channel name: 220.0 nm
Channel annotation: PDA 220.0 nm

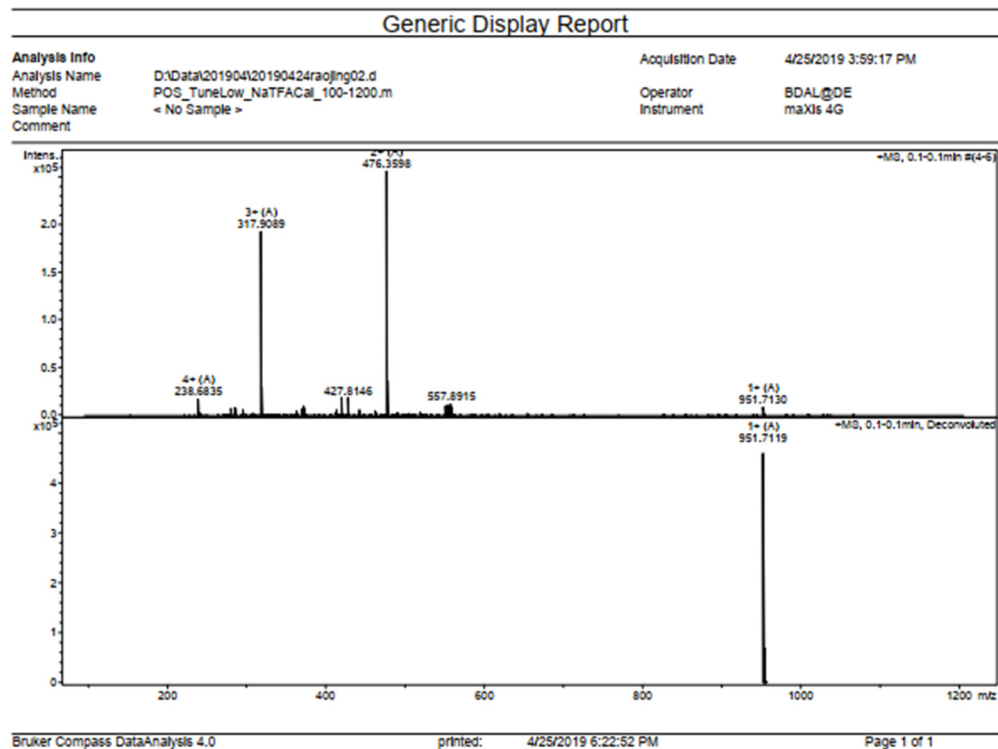


Channel: PDA 220.0 nm

	channel	retention time(min)	area	% area	peak height
1	PDA 220.0 nm	17.762	8323065	98.90	918299
2	PDA 220.0 nm	19.300	92528	1.10	15403

2.4. MS and HPLC data for Feleucin-K66

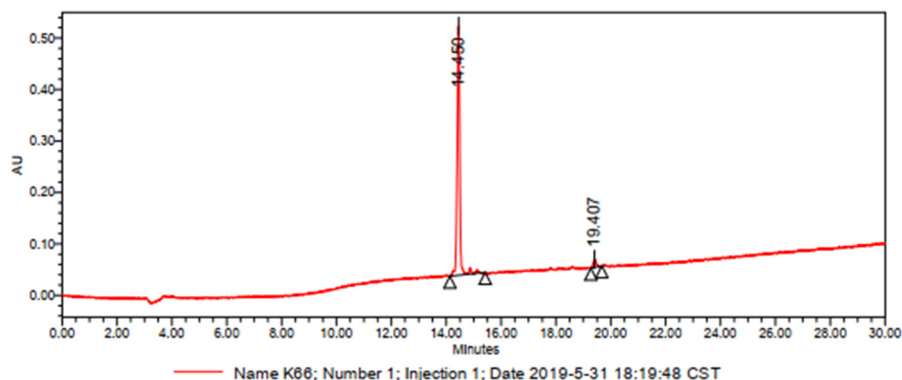
MS: expected mass: 952.5; Measured average mass: 951.7



Customer Peptide HPLC Report

Purity:96.25%

Sample Information			
Name:	K66	Collector:	System
Type:	NO	Acquisition time:	2019-5-31 18:19:48 CST
Bottle number:	1	Method group:	peptide
Injection times:	1	Processing date:	2019-5-31 21:01:42 CST
Injection volume:	20.00 ul	Processing method:	0
Operation time:	30.0 Minutes	Channel name:	220.0 nm
		Channel annotation:	PDA 220.0 nm

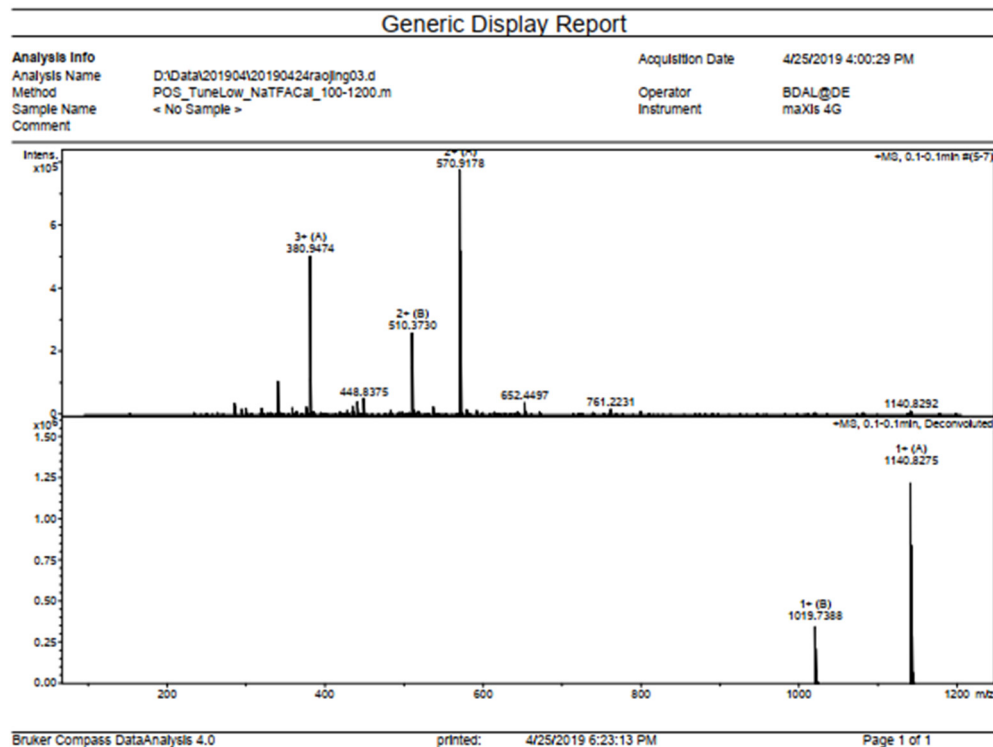


Channel: PDA 220.0 nm

	channel	retention time(min)	area	% area	peak height
1	PDA 220.0 nm	14.450	3213739	96.25	483436
2	PDA 220.0 nm	19.407	125260	3.75	15457

2.5. MS and HPLC data for Feleucin-K67

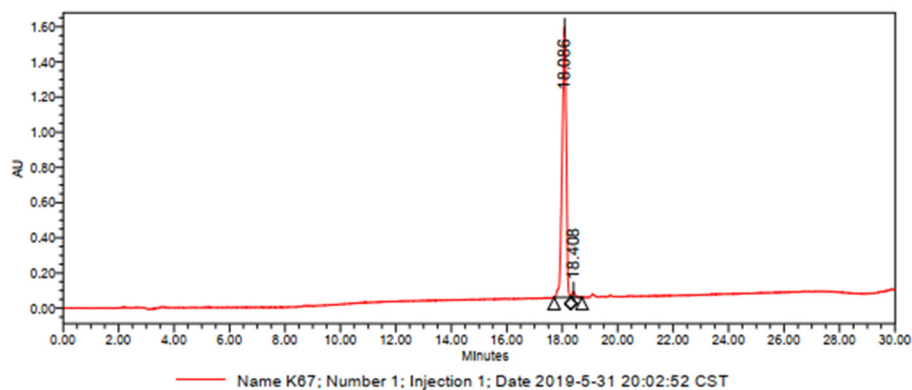
MS: expected mass: 1141.5; Measured average mass: 1140.8



Customer Peptide HPLC Report

Purity:98.45%

Sample Information			
Name:	K67	Collector:	System
Type:	NO	Acquisition time:	2019-5-31 20:02:52 CST
Bottle number:	1	Method group:	peptide
Injection times:	1	Processing date:	2019-5-31 21:03:01 CST
Injection volume:	20.00 ul	Processing method:	0
Operation time:	30.0 Minutes	Channel name:	220.0 nm
		Channel annotation:	PDA 220.0 nm

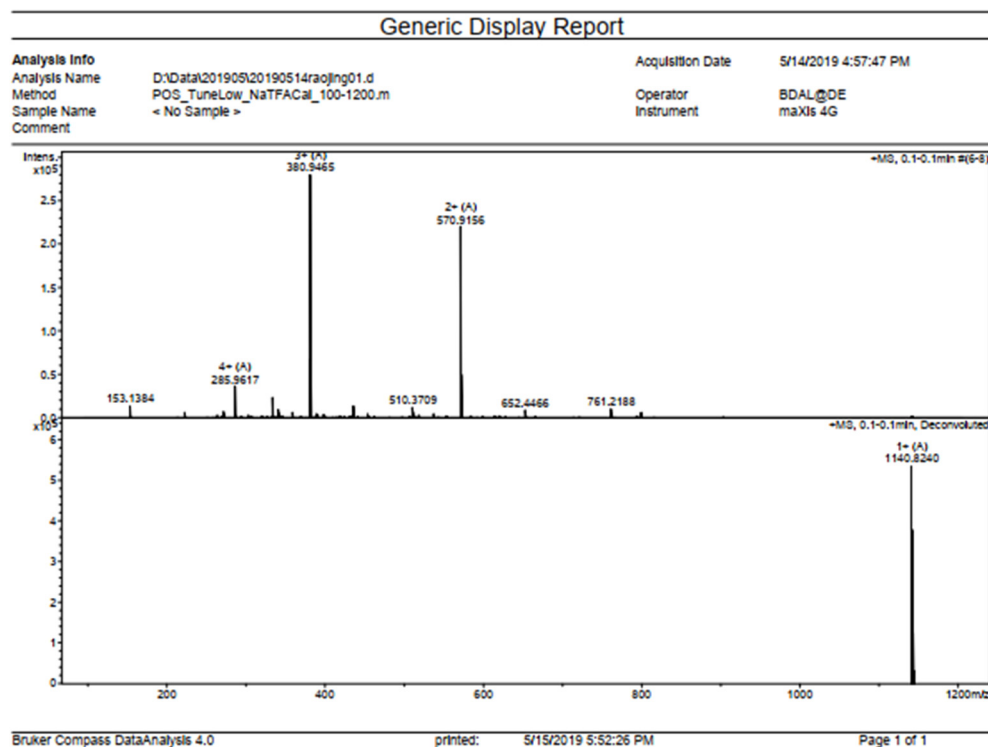


Channel: PDA 220.0 nm

	channel	retention time(min)	area	% area	peak height
1	PDA 220.0 nm	18.086	15645465	98.45	1539079
2	PDA 220.0 nm	18.408	246630	1.55	33378

2.6. MS and HPLC data for Feleucin-K68

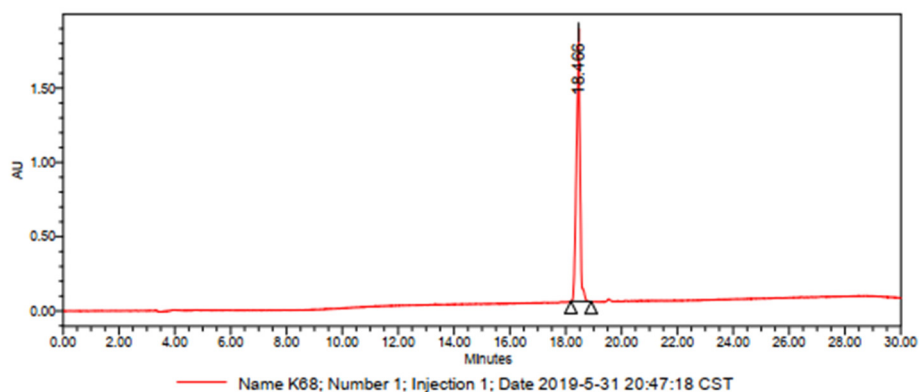
MS: expected mass: 1141.5; Measured average mass: 1140.8



Customer Peptide HPLC Report

Purity:100.00%

Sample Information			
Name:	K68	Collector:	System
Type:	NO	Acquisition time:	2019-5-31 20:47:18 CST
Bottle number:	1	Method group:	peptide
Injection times:	1	Processing date:	2019-5-31 21:18:16 CST
Injection volume:	20.00 ul	Processing method:	0
Operation time:	30.0 Minutes	Channel name:	220.0 nm
		Channel annotation:	PDA 220.0 nm

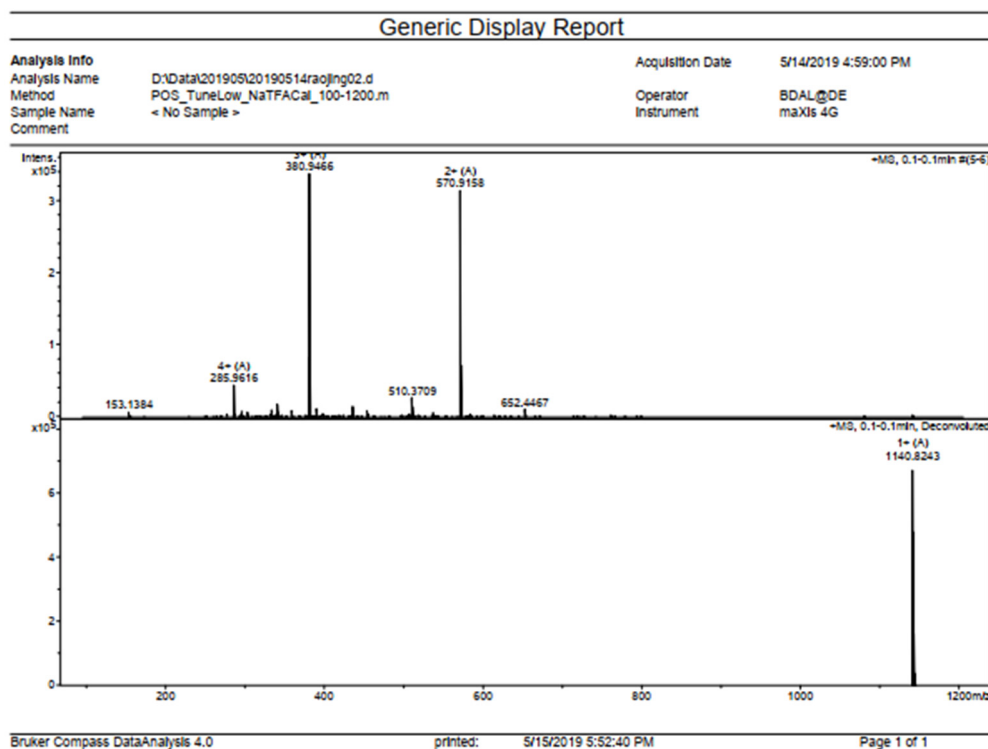


Channel: PDA 220.0 nm

	channel	retention time(min)	area	% area	peak height
1	PDA 220.0 nm	18.466	15471650	100.00	1833445

2.7. MS and HPLC data for Feleucin-K69

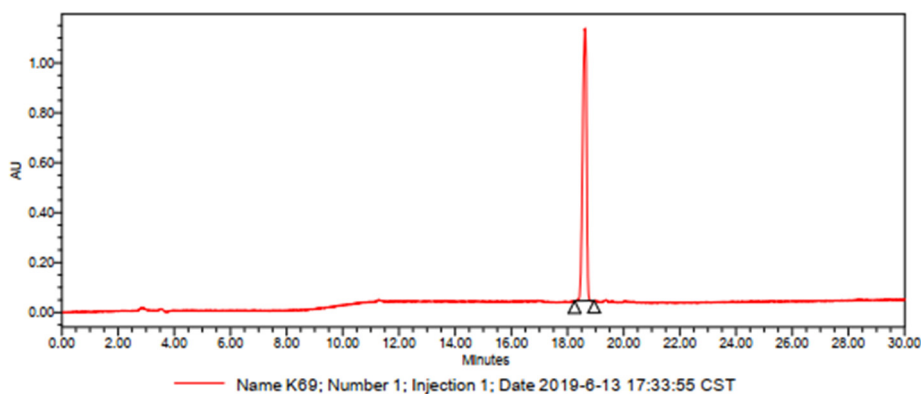
MS: expected mass: 1141.5; Measured average mass: 1140.8



Customer Peptide HPLC Report

Purity:100.00%

Sample Information			
Name:	K69	Collector:	System
Type:	未知	Acquisition time:	2019-6-13 17:33:55 CST
Bottle number:	1	Method group:	peptide
Injection times:	1	Processing date:	2019-6-15 10:03:59 CST
Injection volume:	20.00 ul	Processing method:	0
Operation time:	30.0 Minutes	Channel name:	220.0 nm
		Channel annotation:	PDA 220.0 nm

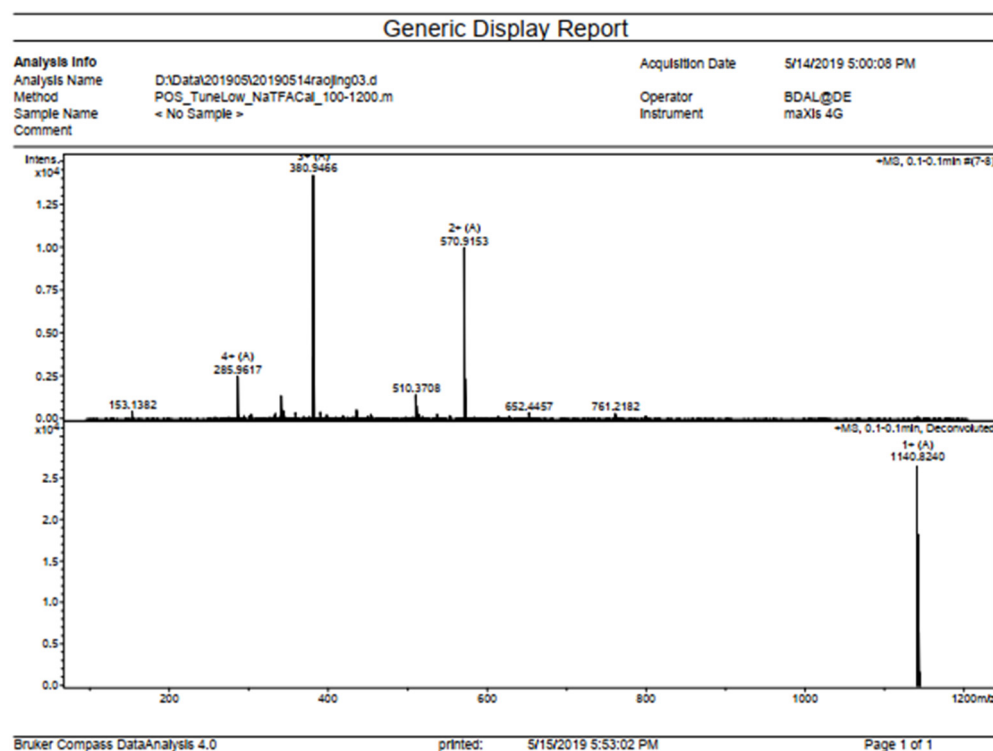


Channel: PDA 220.0 nm

	channel	retention time(min)	area	% area	peak height
1	PDA 220.0 nm	18.635	10688139	100.00	1089819

2.8. MS and HPLC data for Feleucin-K70

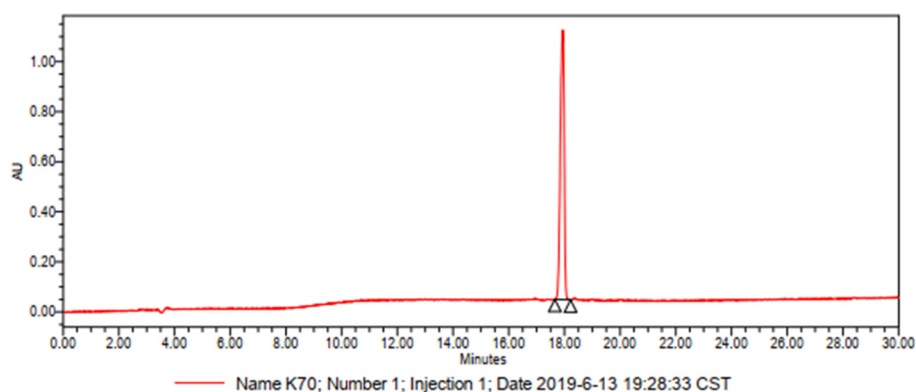
MS: expected mass: 1141.5; Measured average mass: 1140.8



Customer Peptide HPLC Report

Purity: 100.00%

Sample Information			
Name:	K70	Collector:	System
Type:	NO	Acquisition time:	2019-6-13 19:28:33 CST
Bottle number:	1	Method group:	peptide
Injection times:	1	Processing date:	2019-6-15 10:06:13 CST
Injection volume:	20.00 ul	Processing method:	0
Operation time:	30.0 Minutes	Channel name:	220.0 nm
		Channel annotation:	PDA 220.0 nm



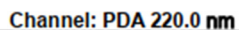
Channel: PDA 220.0 nm

	channel	retention time(min)	area	% area	peak height
1	PDA 220.0 nm	17.942	10441606	100.00	1077355

MS: expected mass: 1126.8; Measured average mass: 1125.8



Name:	K71	Collector:	System
Type:	NO	Acquisition time:	2019-6-27 13:37:12 CST
Bottle number:	1	Method group:	peptide
Injection times:	1	Processing date:	2019-6-28 15:08:48 CST
Injection volume:	20.00 ul	Processing method:	0
Operation time:	30.0 Minutes	Channel name:	220.0 nm
		Channel annotation:	PDA 220.0 nm



	channel	retention time(min)	area	% area	peak height
1	PDA 220.0 nm	20.493	7843637	100.00	687935