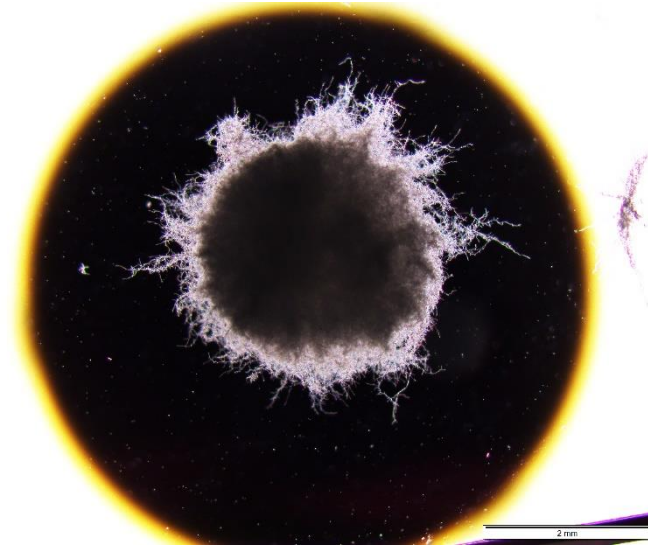
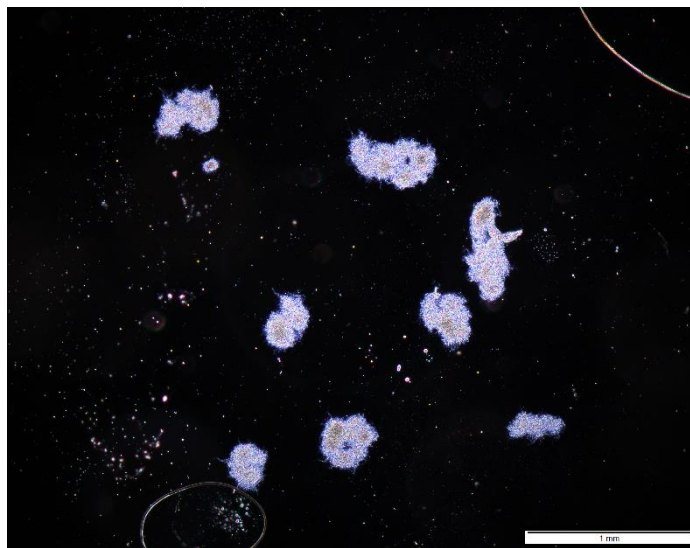


**Supplementary Figure S1.** Microscopic image of the morphological objects snapped in 24 h of ATSR2: (a) *A. terreus* monoculture, (b) *S. rimosus* monoculture, (c) *A. terreus* and *S. rimosus* co-culture. The co-culture morphological objects were marked as follows: *A. terreus* fully evolved pellet - yellow arrow, *S. rimosus* fully evolved pellets - green arrows, hyphae or clumps of both species - blue arrows.

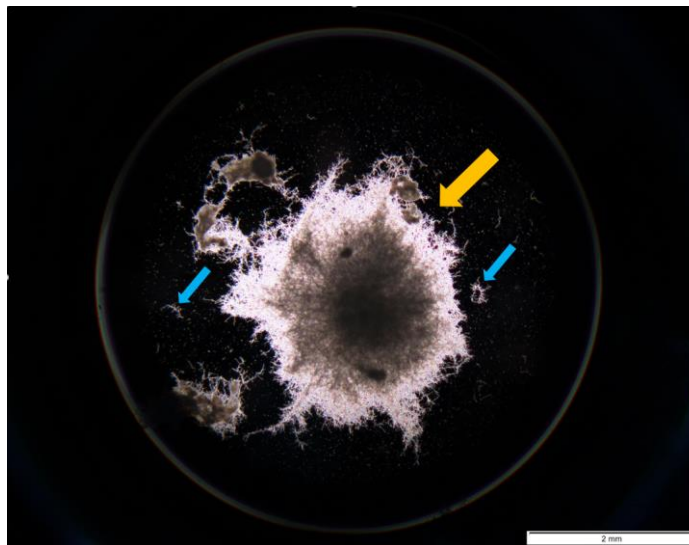
a)



b)

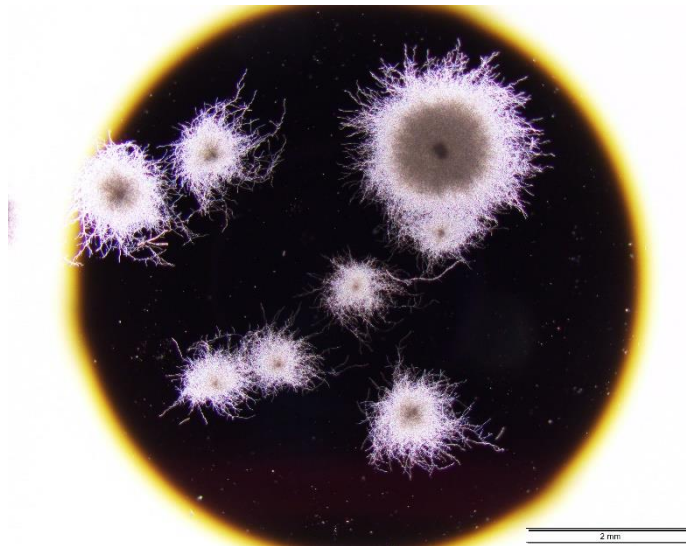


c)

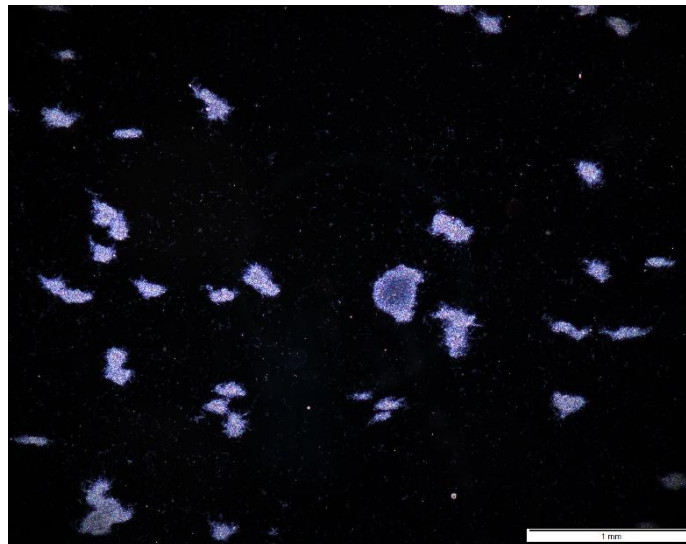


**Supplementary Figure S2.** Microscopic image of the morphological objects snapped in 24 h of ATSR8: (a) *A. terreus* monoculture, (b) *S. rimosus* monoculture, (c) *A. terreus* and *S. rimosus* co-culture in which *A. terreus* pellets are visible and hardly any *S. rimosus* objects can be found (*A. terreus* fully evolved pellet - yellow arrow, hyphae or clumps of both species - blue arrows).

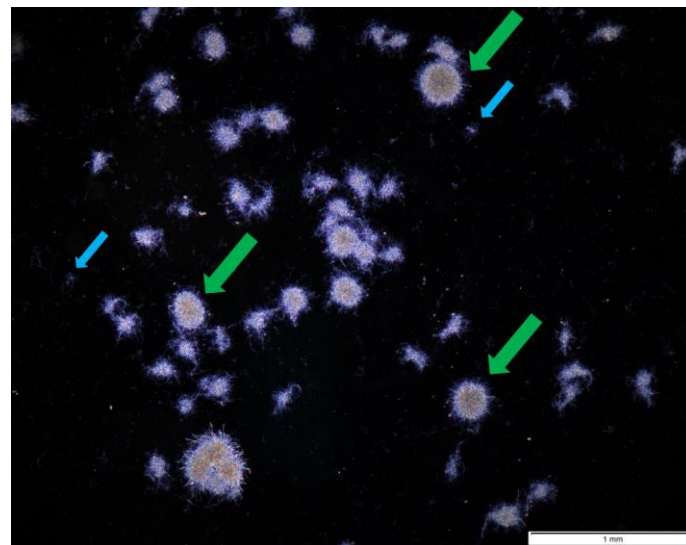
a)



b)



c)



**Supplementary Figure S3.** Microscopic image of the morphological objects snapped in 24 h of ATSR9: (a) *A. terreus* monoculture, (b) *S. rimosus* monoculture, (c) *A. terreus* and *S. rimosus* co-culture, in which *S. rimosus* pellets are visible and hardly any *A. terreus* objects can be found (*S. rimosus* fully evolved pellets - green arrows, hyphae or clumps of both species - blue arrows).