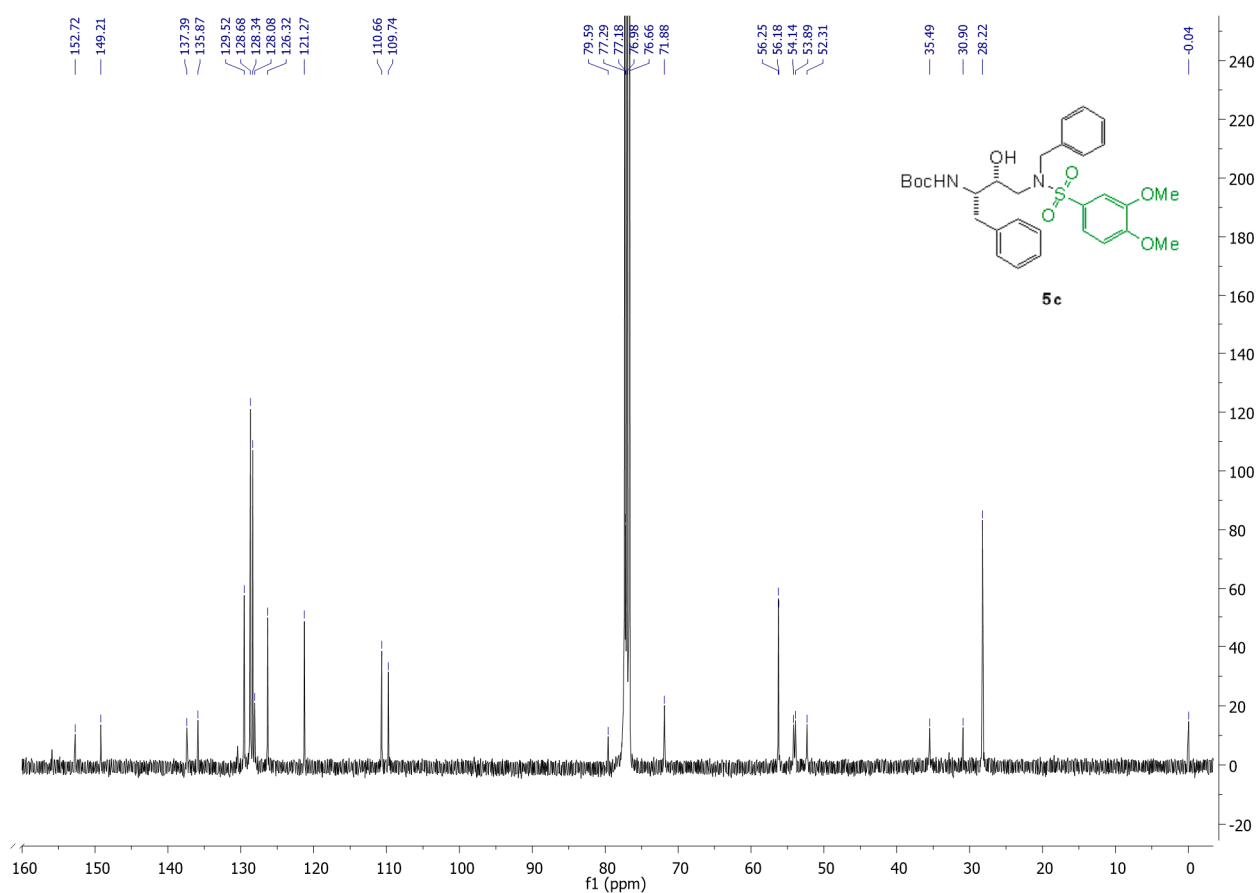
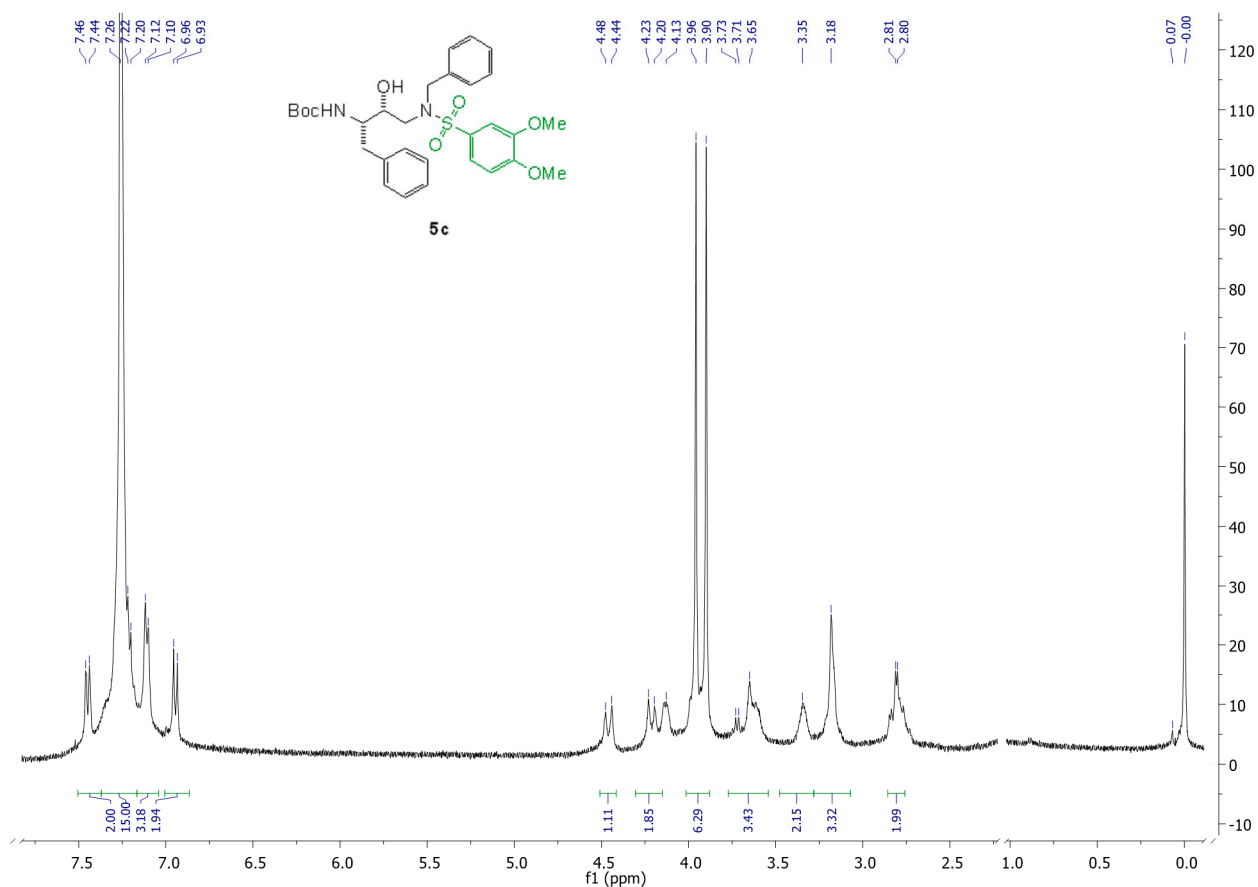


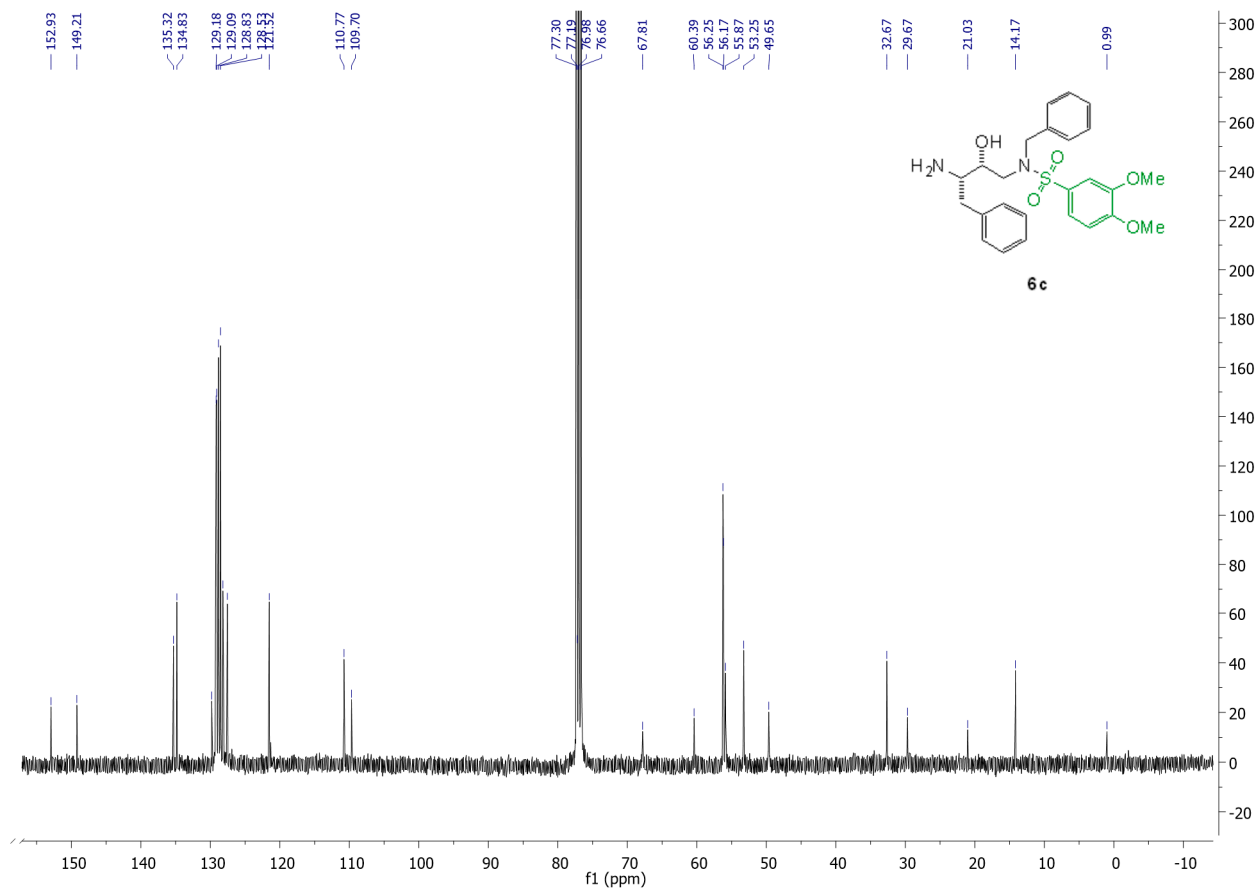
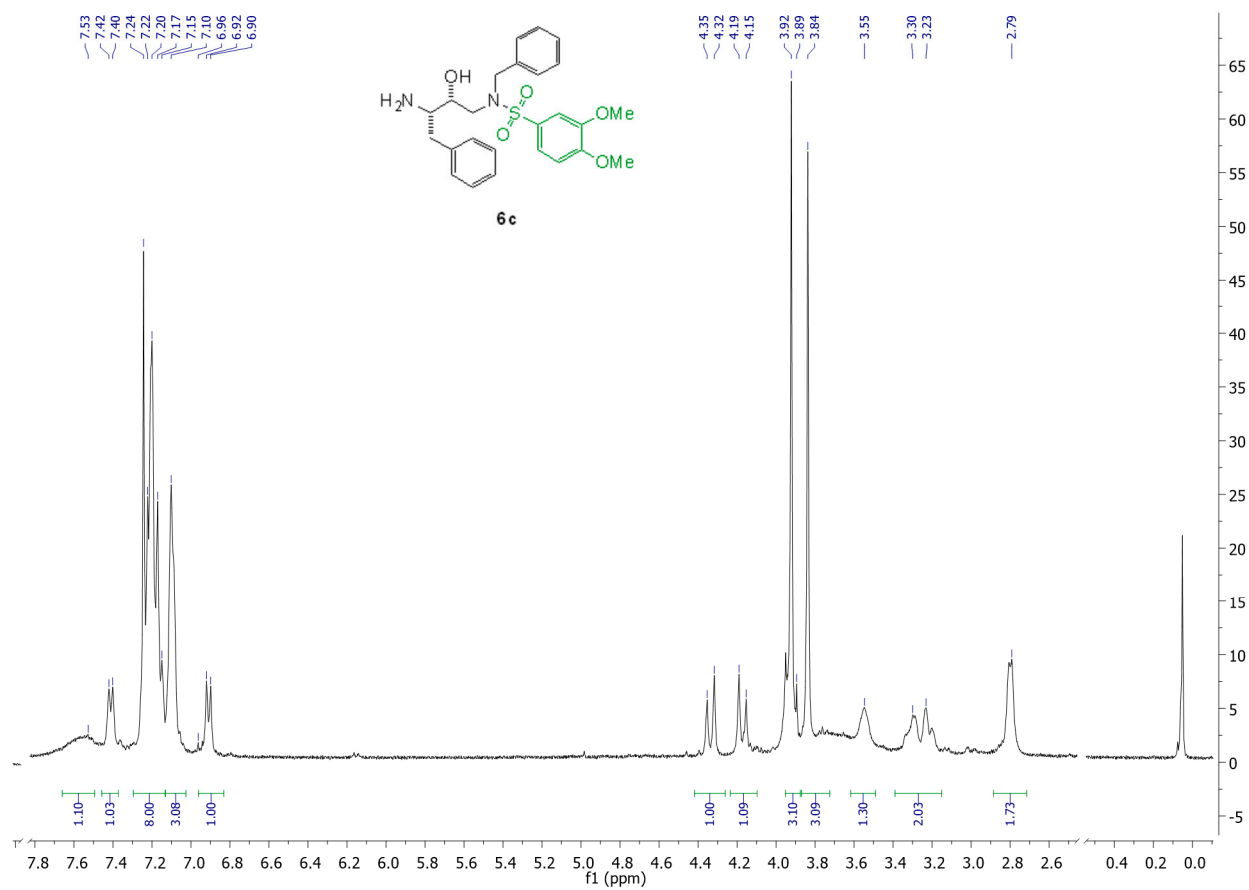
Supplementary material

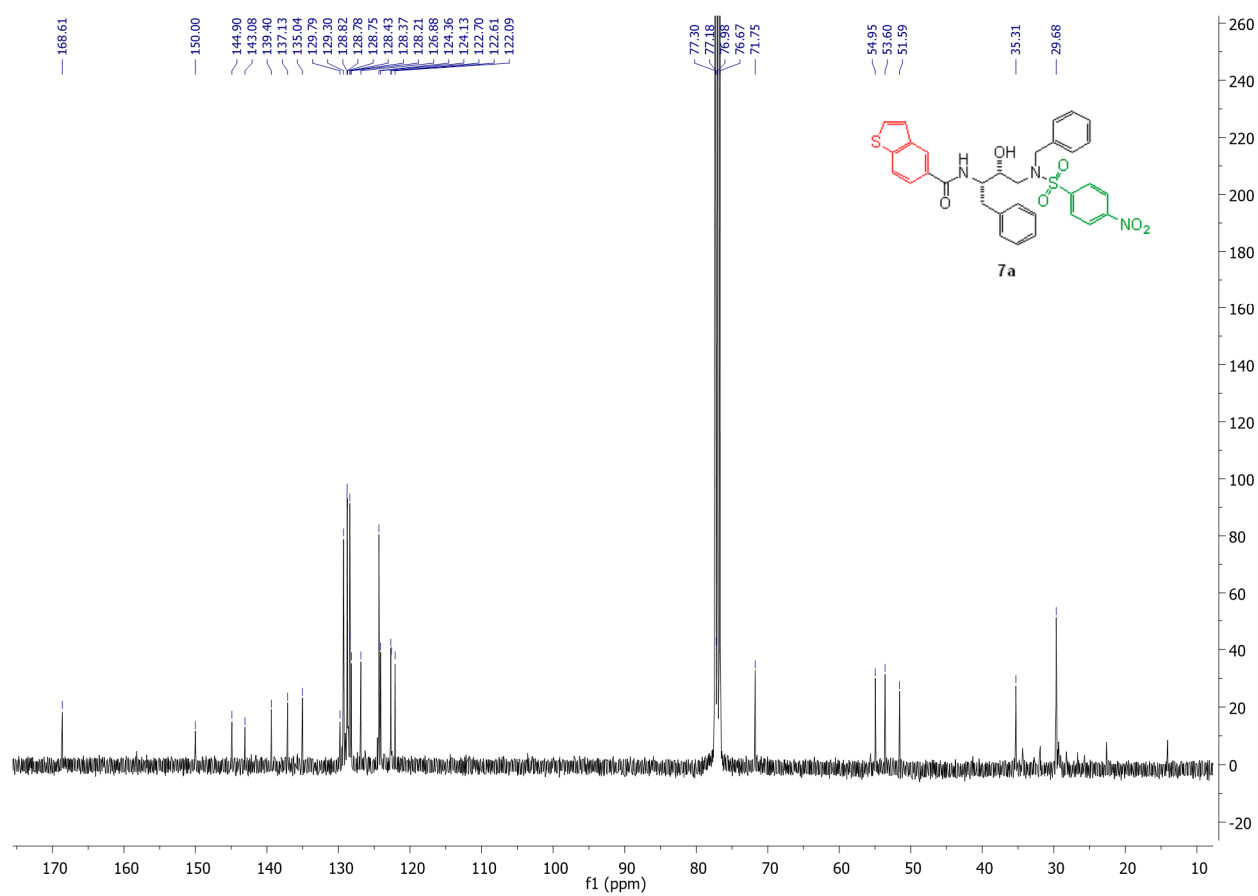
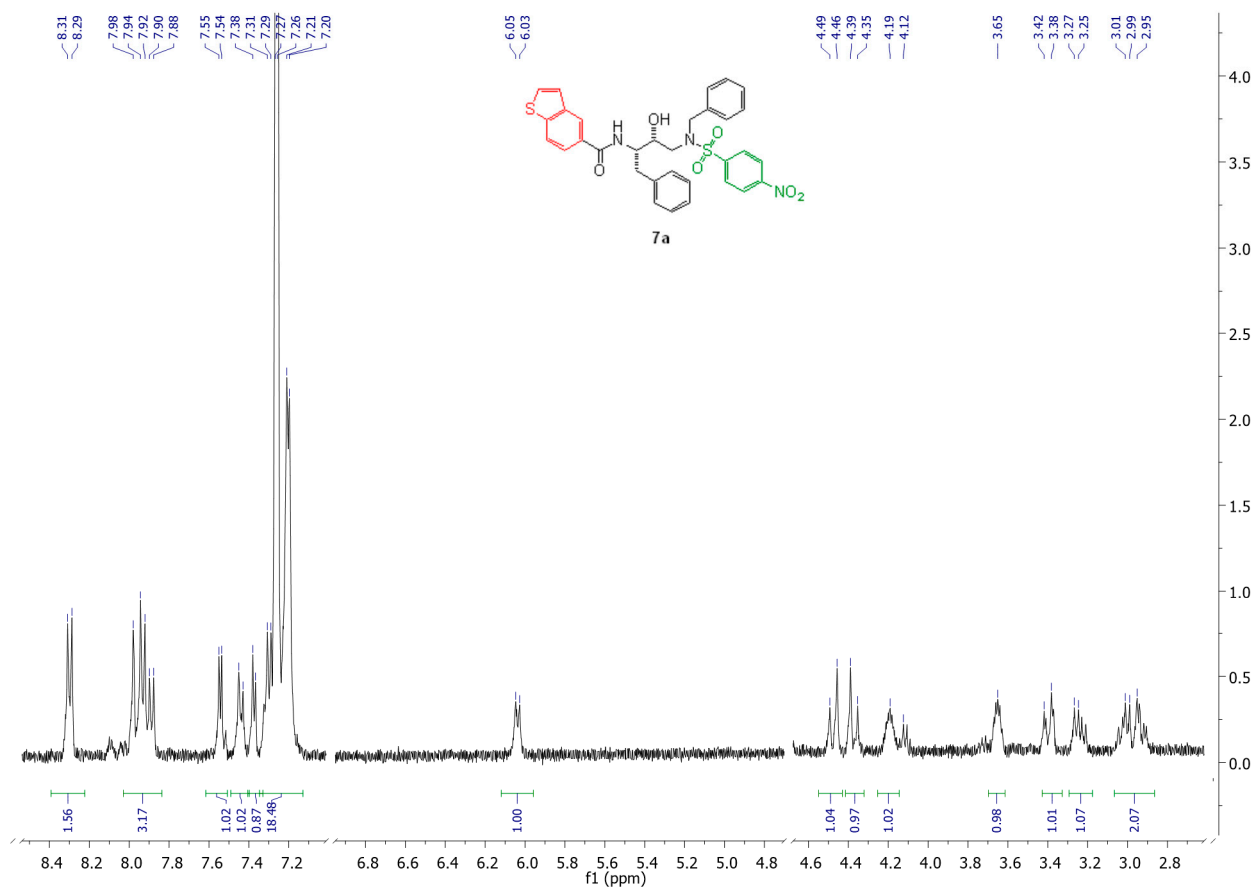
The pseudo-symmetric *N*-benzyl hydroxyethylamine *core* in a new series of heteroarylcarboxamide HIV-1 Pr inhibitors: synthesis, molecular modeling and biological evaluation.

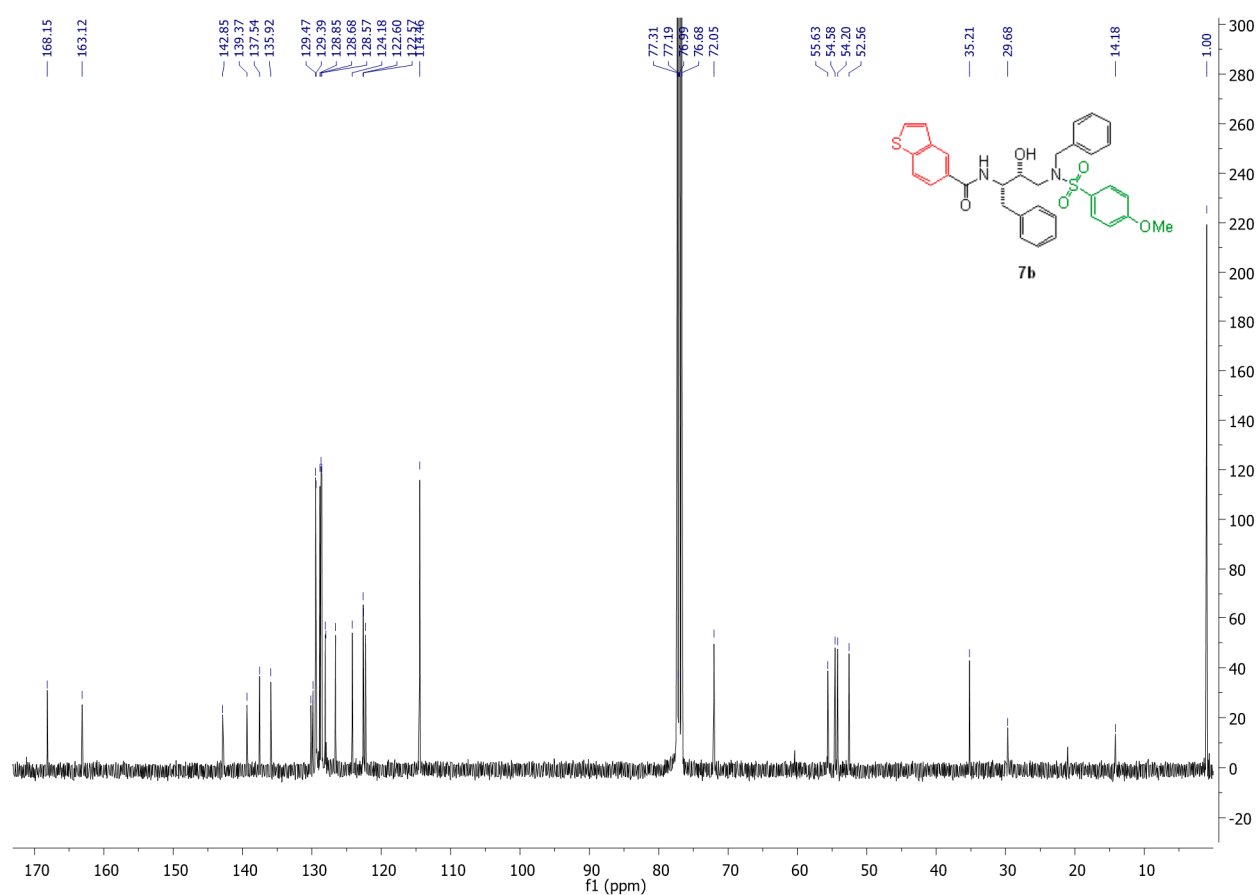
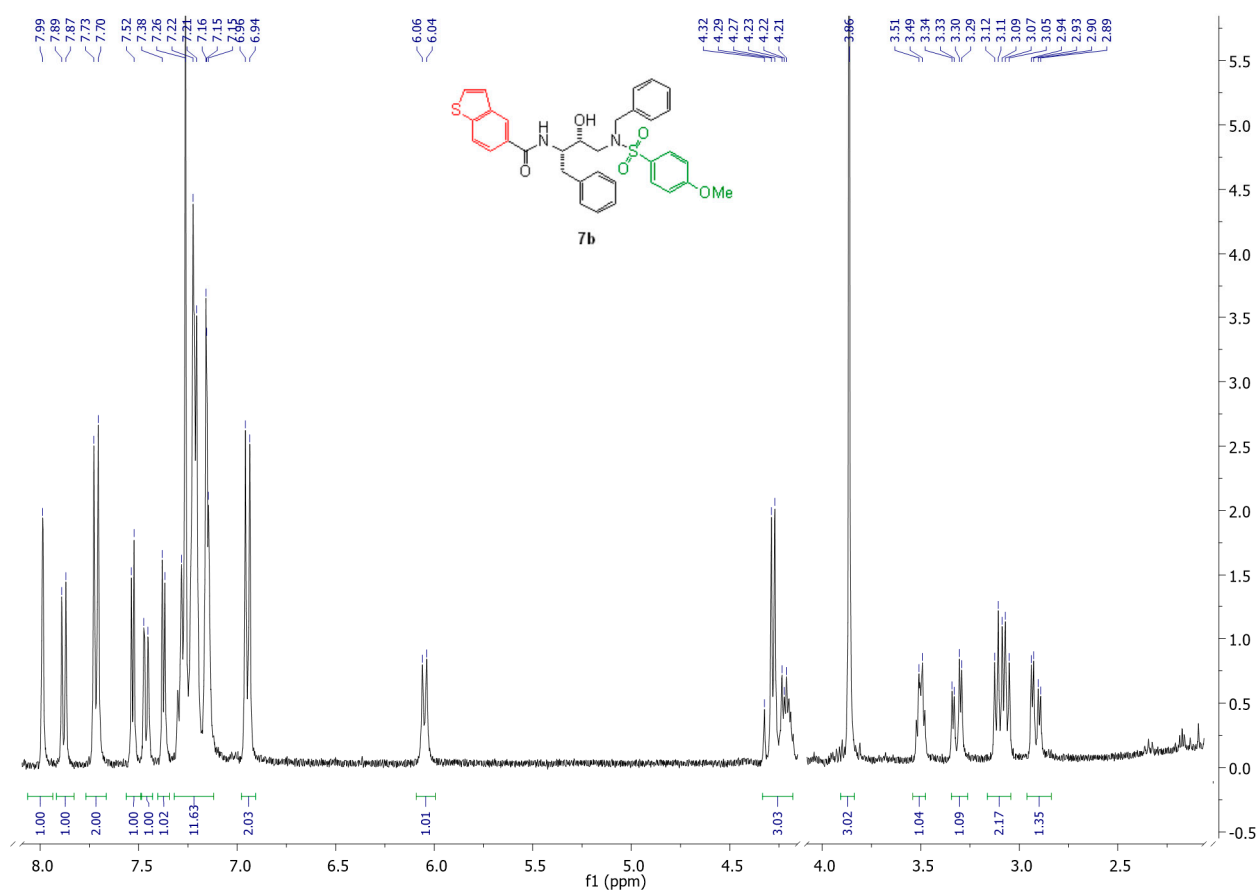
Table of contents

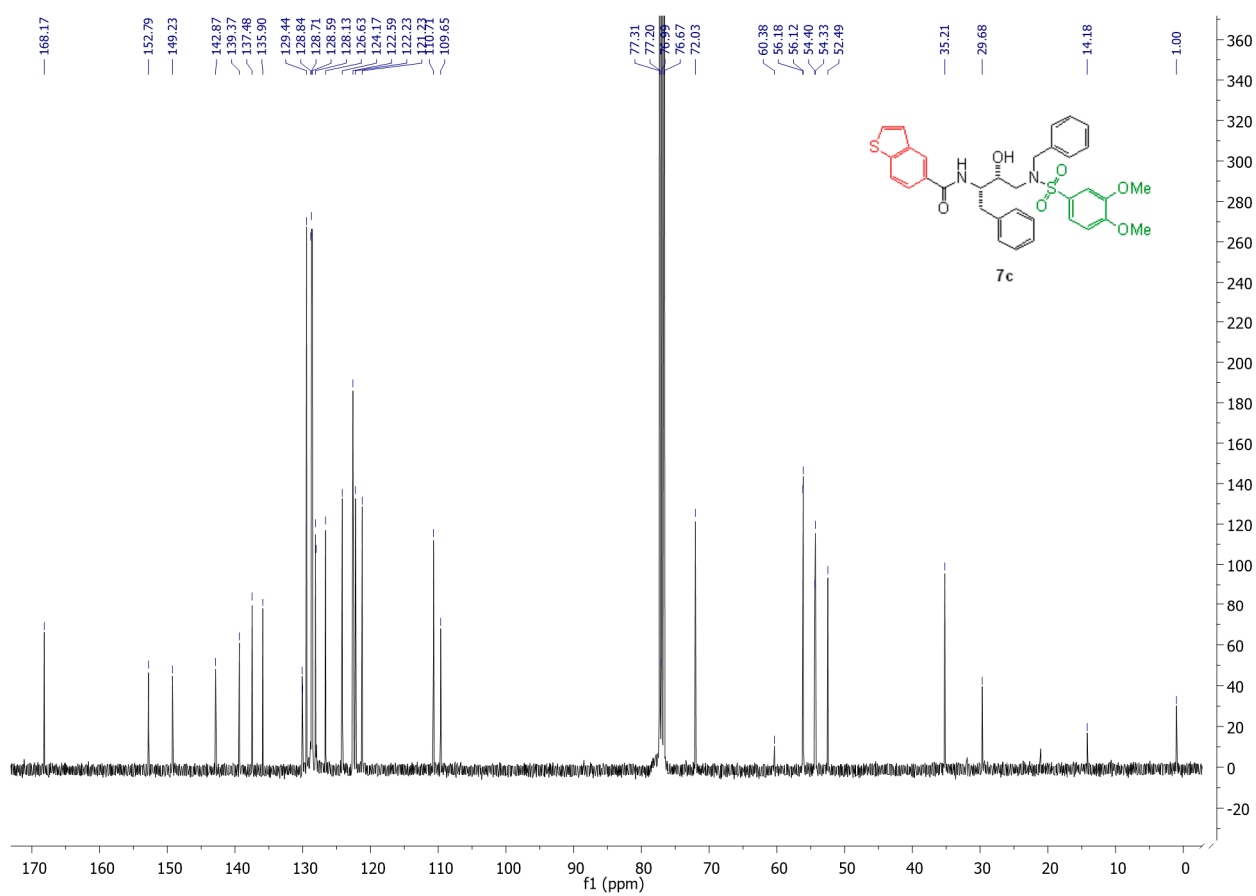
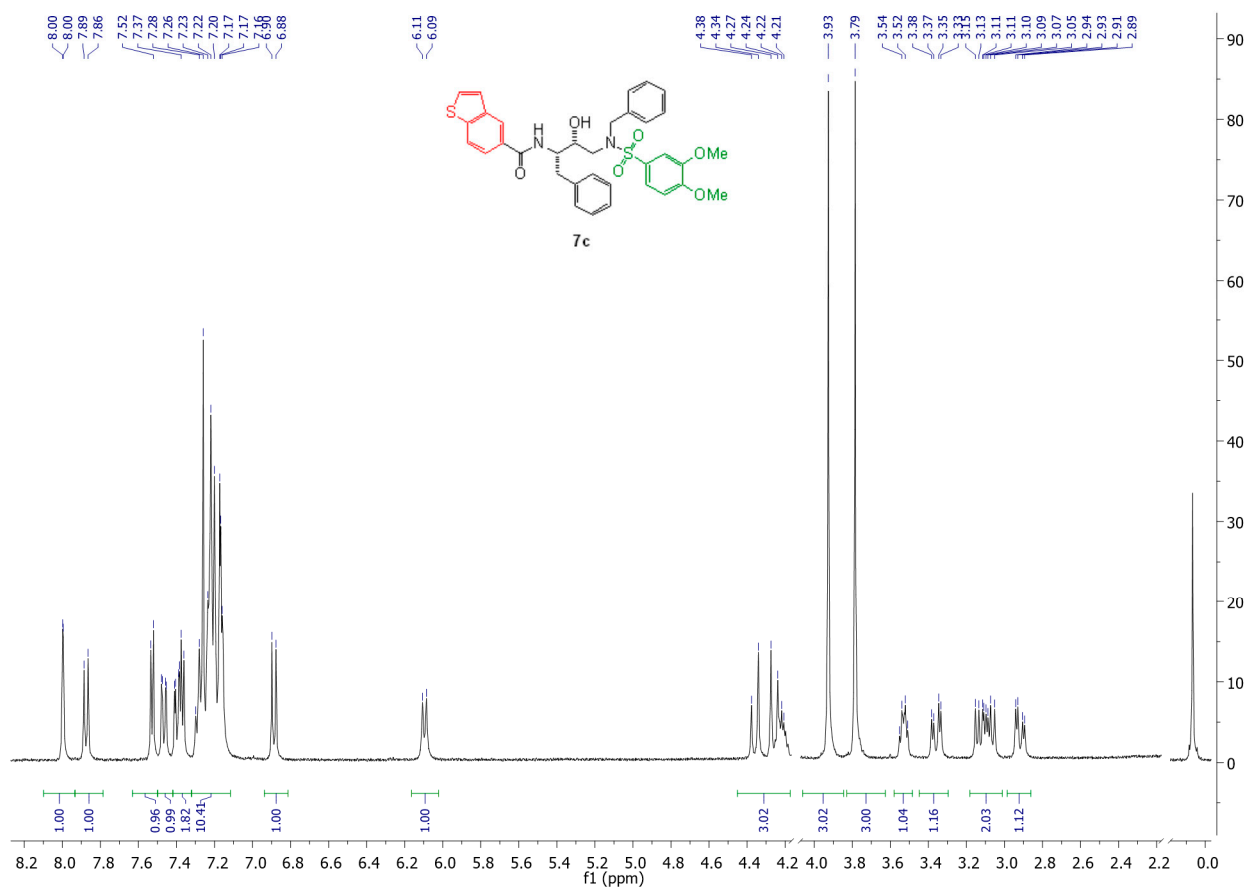
Copies of ¹ H and ¹³ C NMR spectra of compounds 5c and 6c	S2-S3
Copies of ¹ H and ¹³ C NMR spectra of compounds 7a-c , 8a-c , 9a-c	S4-S12
Supplementary figures S1-S4	S13-S17

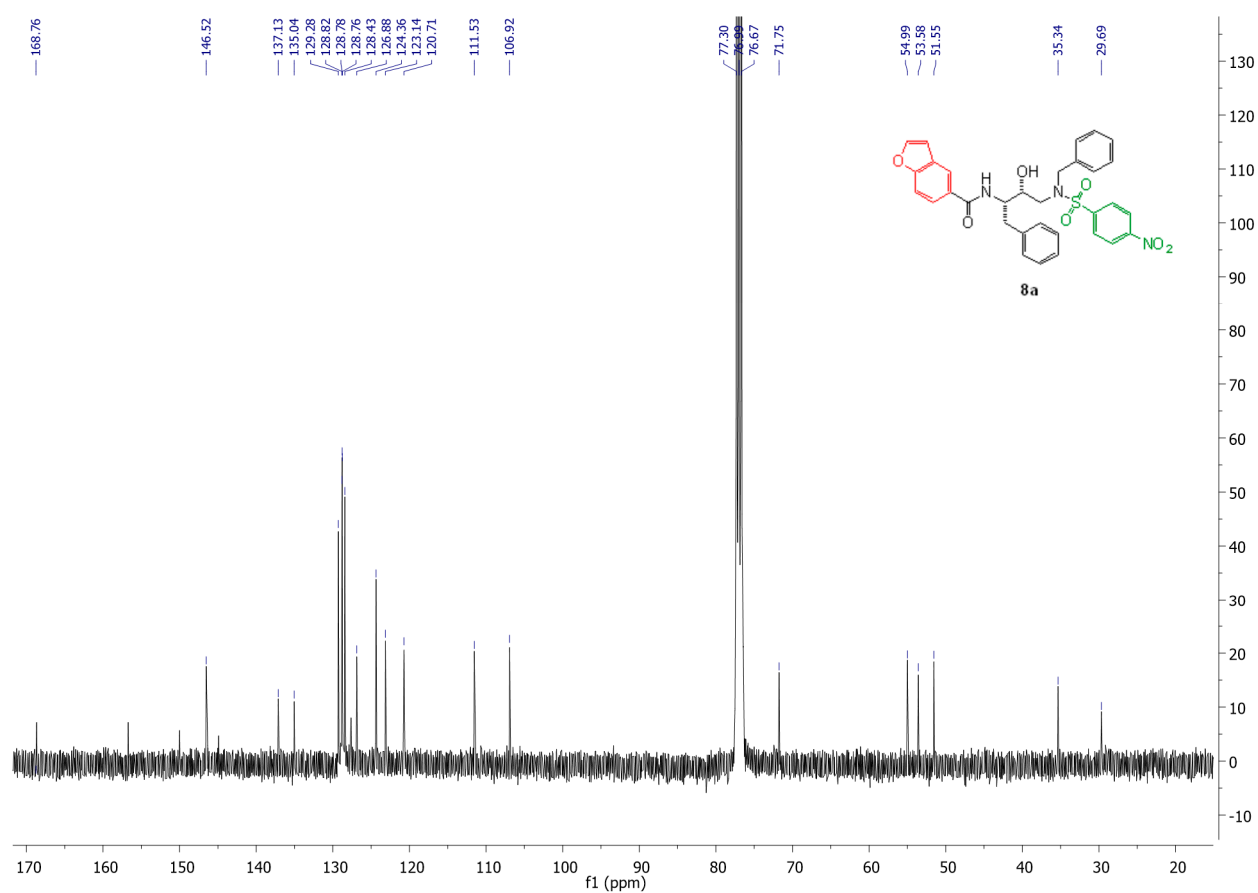
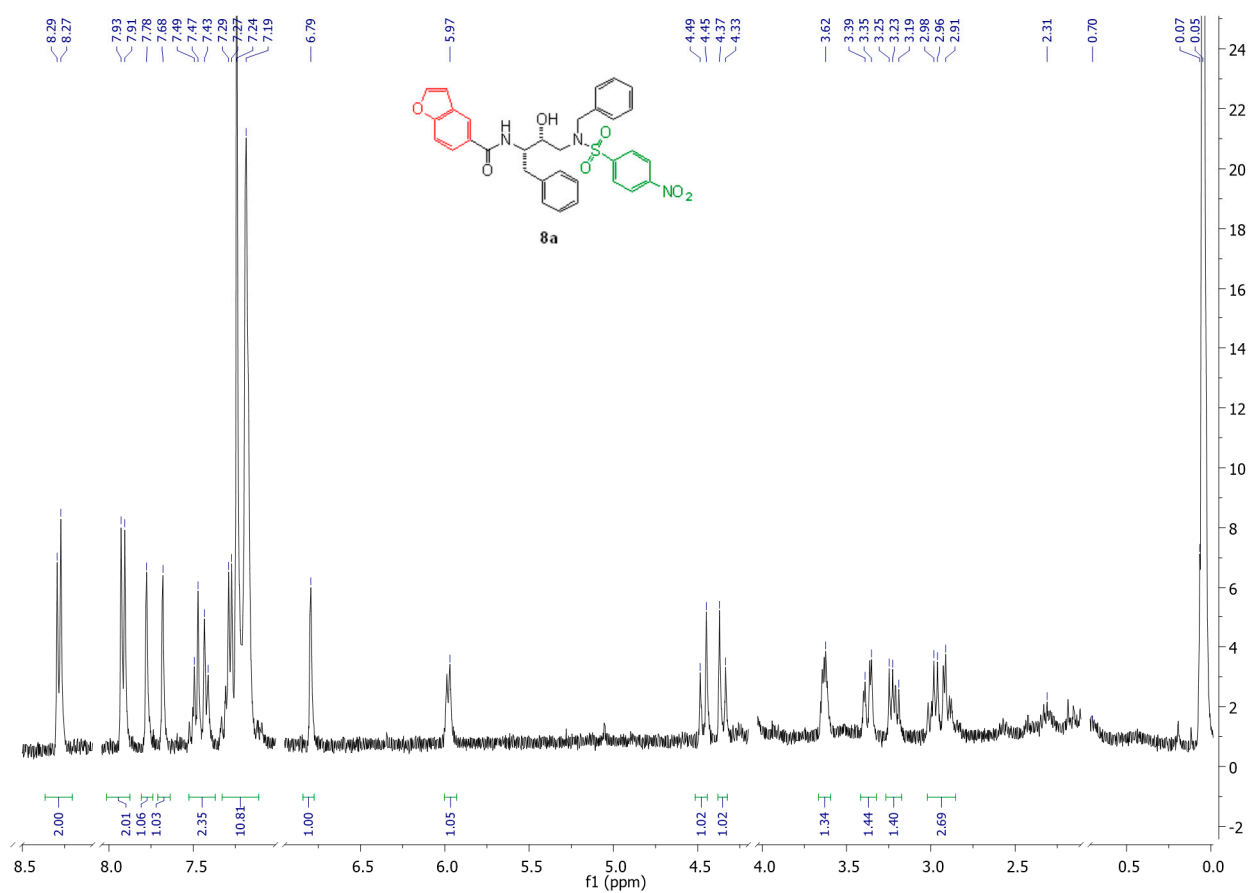


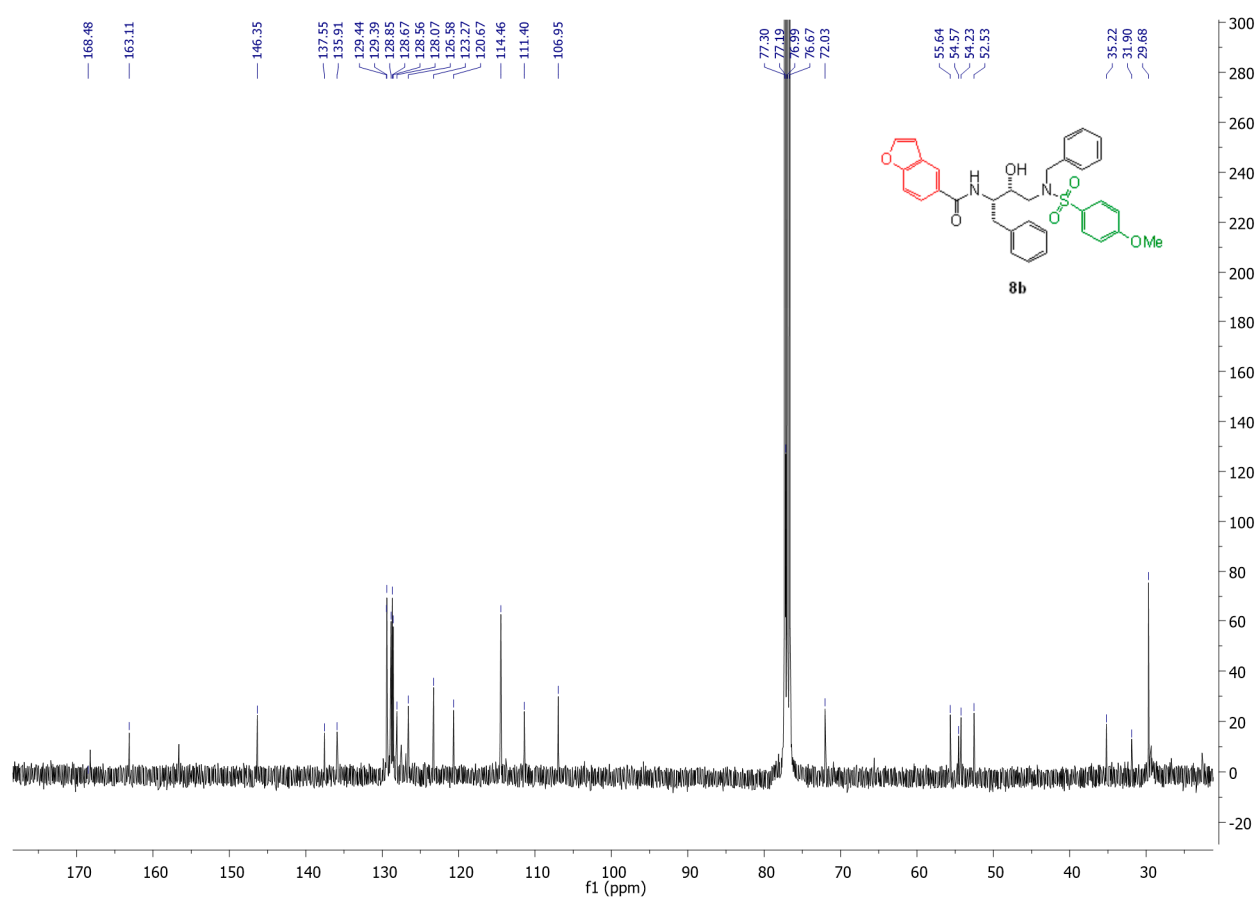
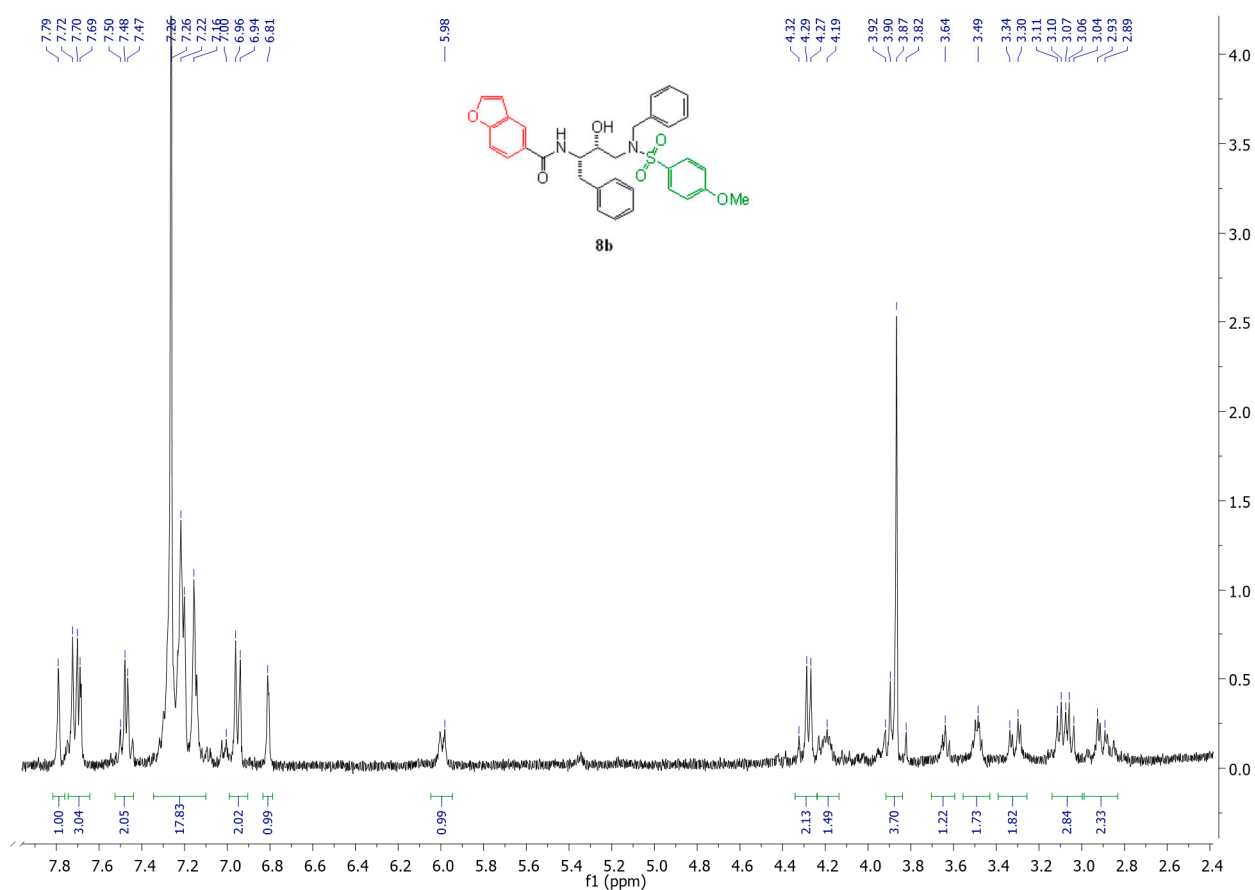


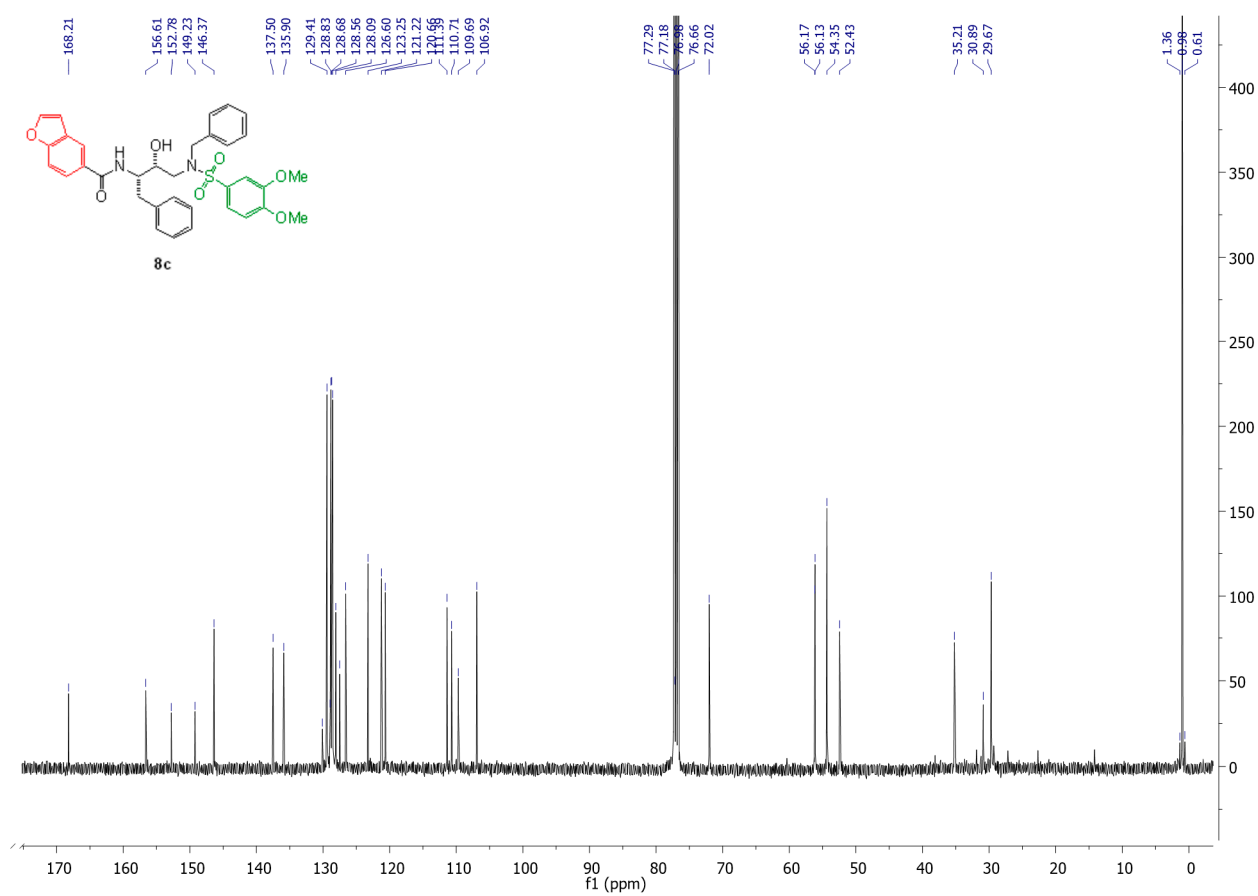
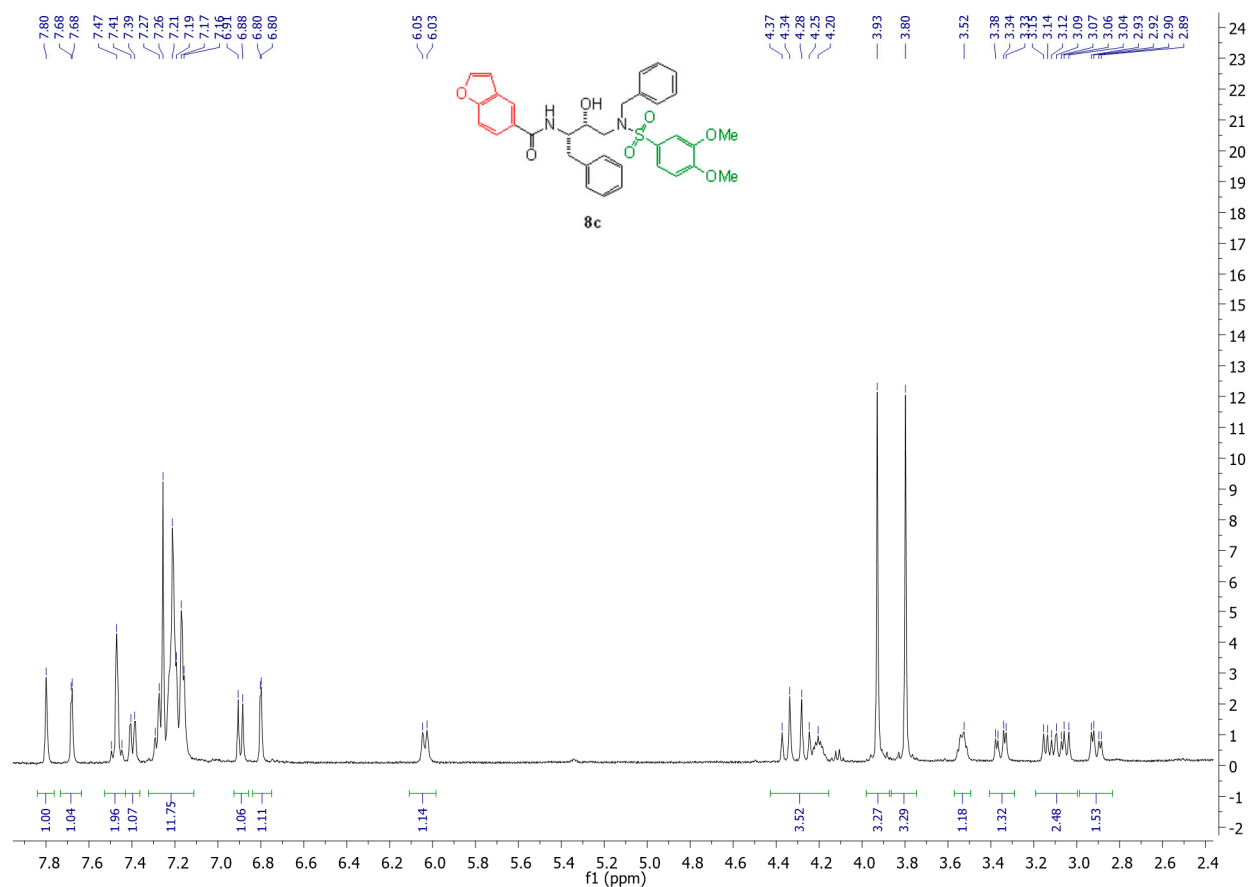


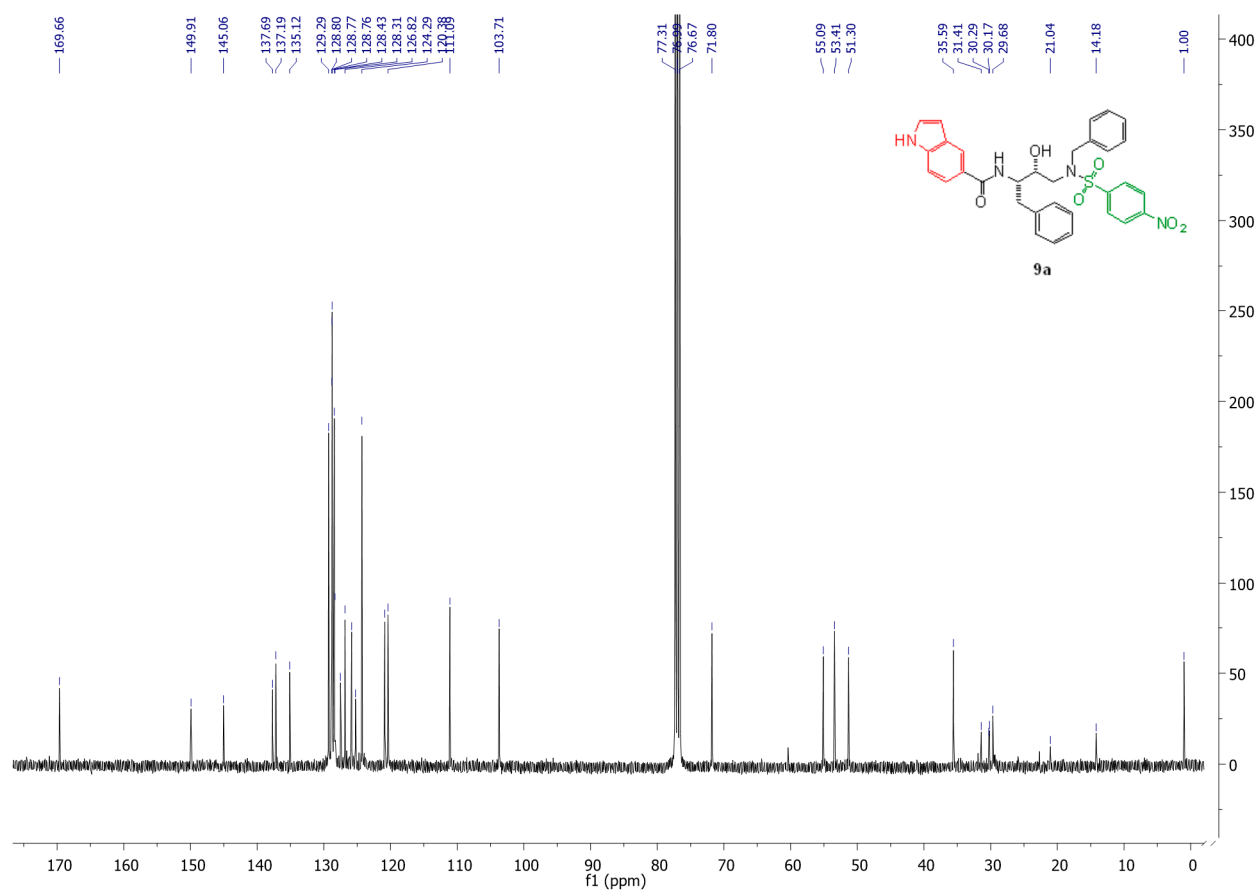
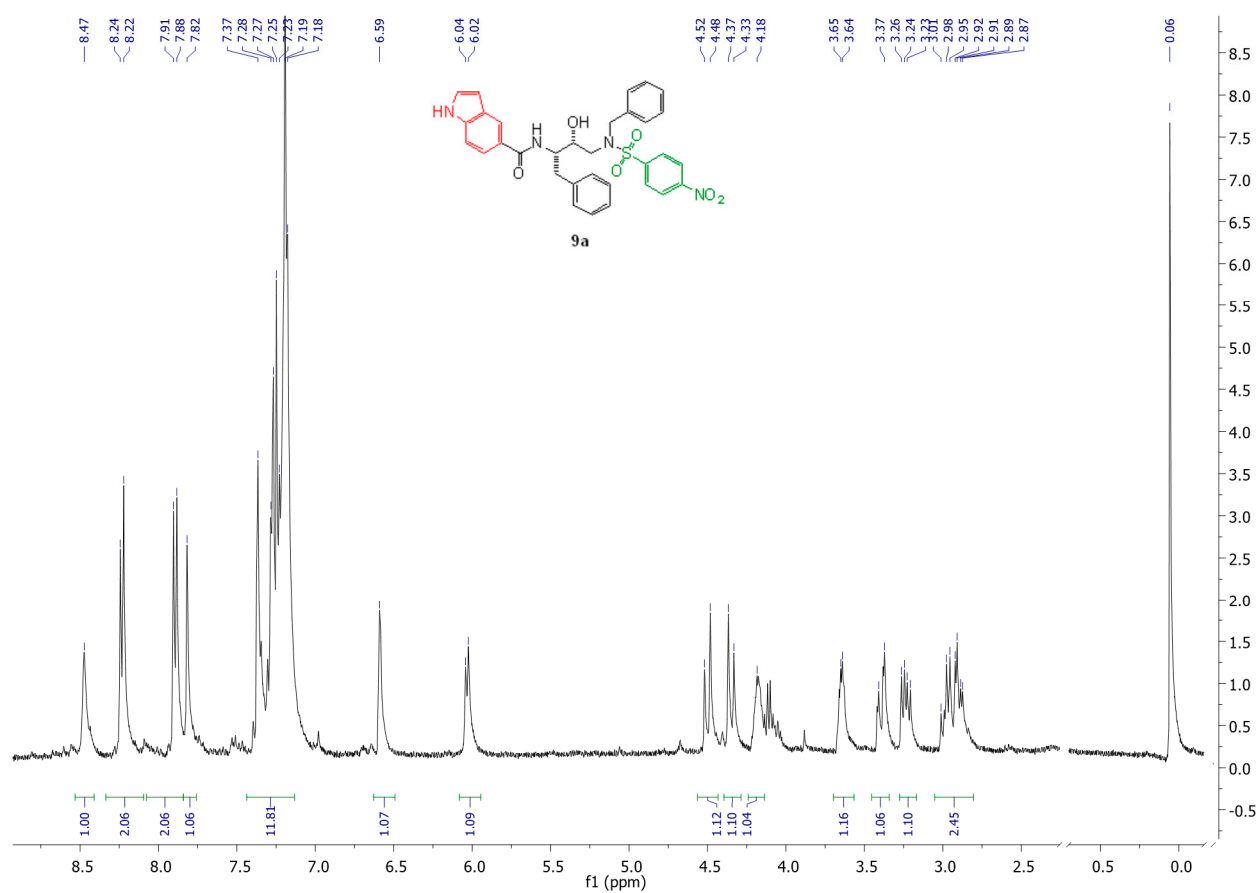


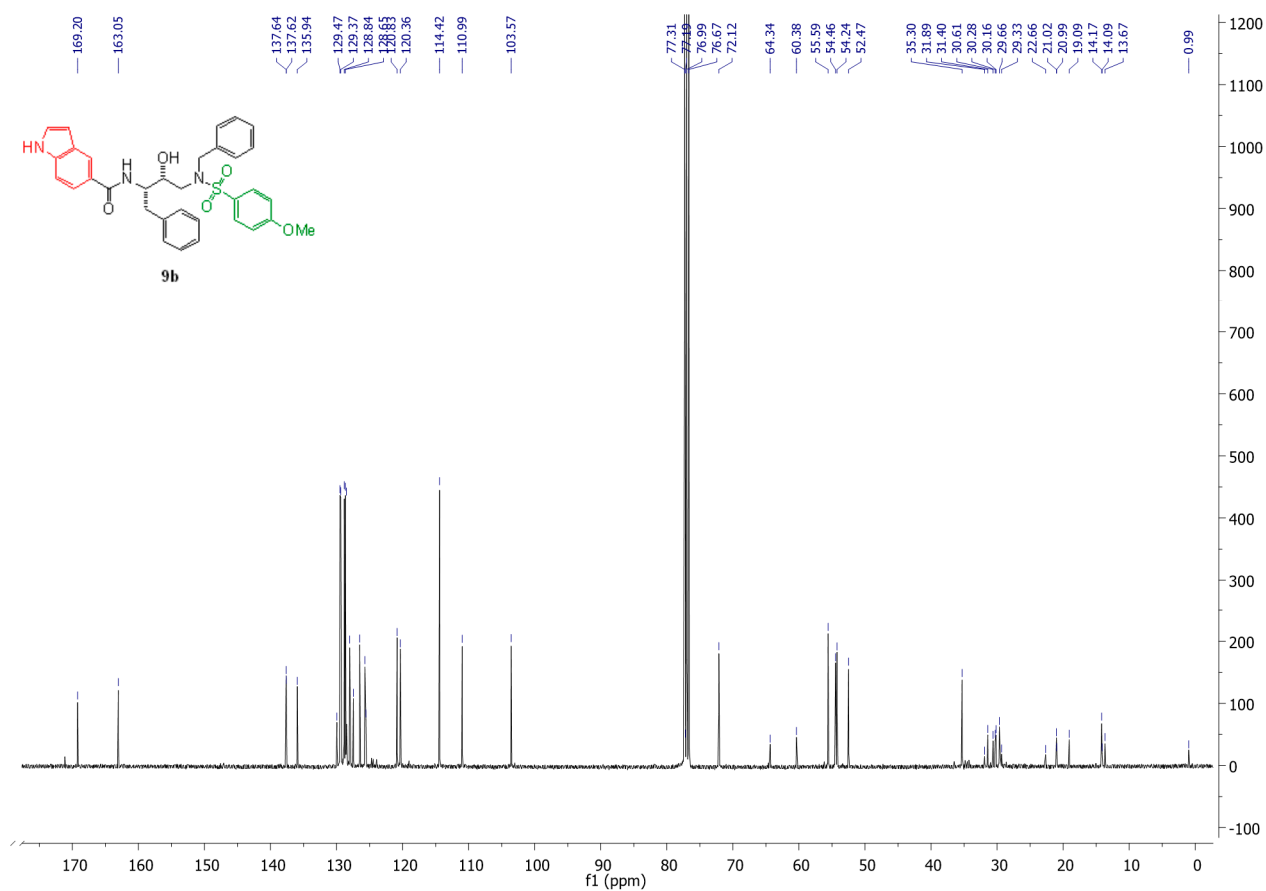
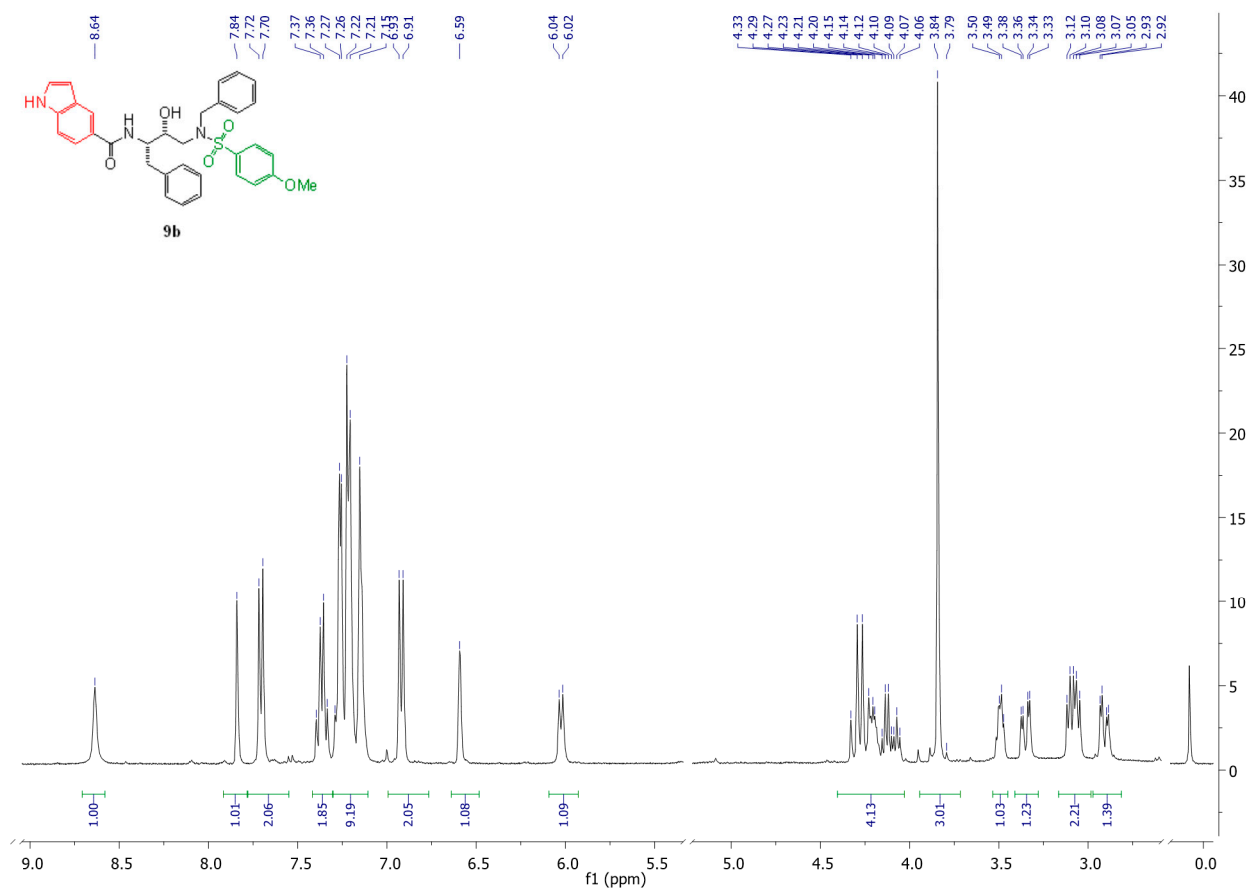


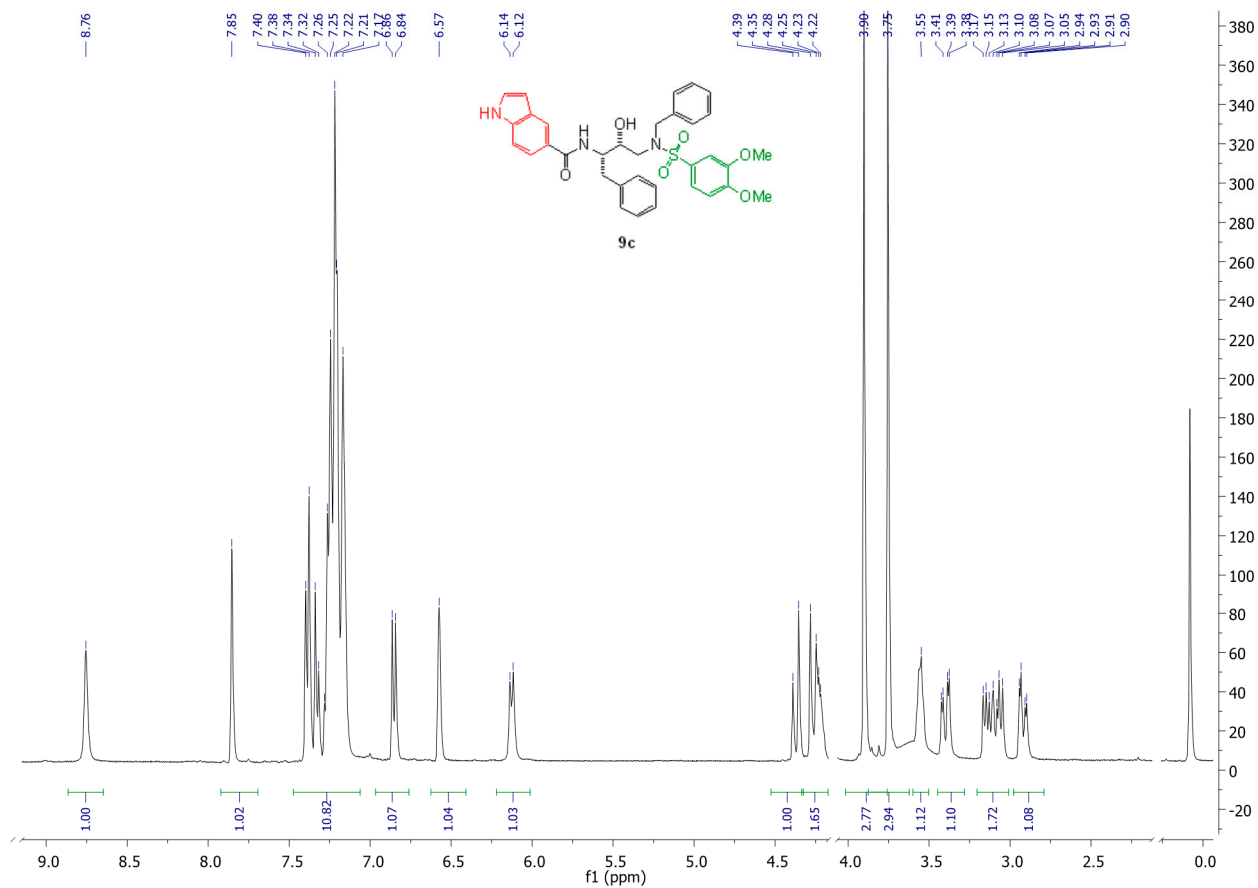
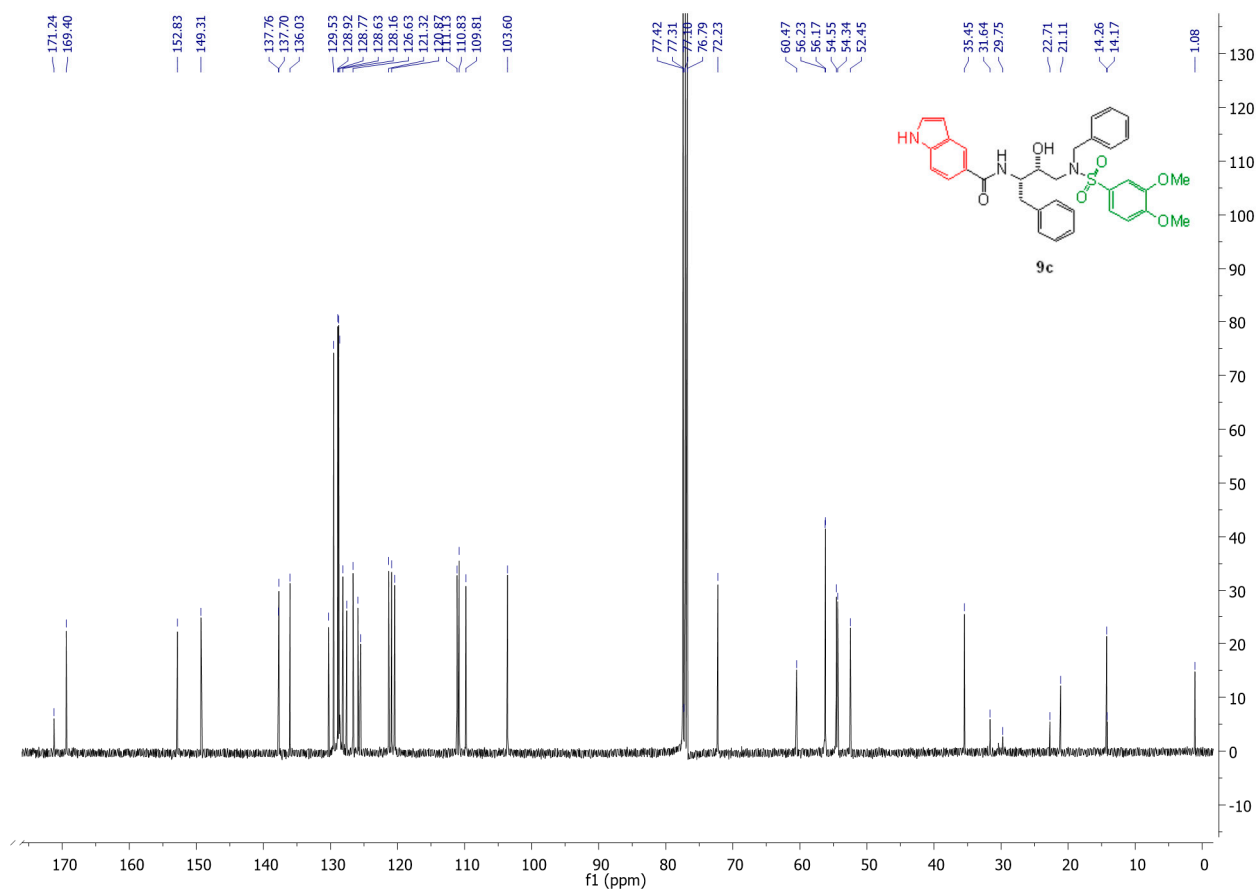


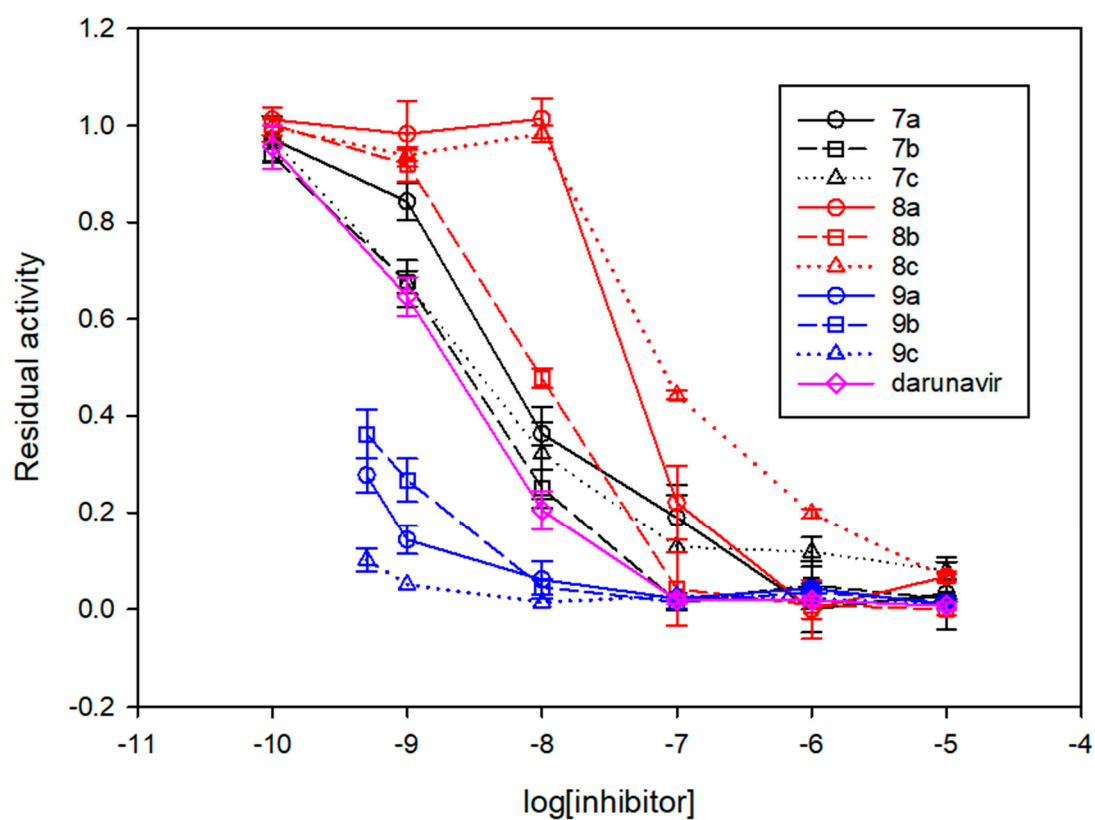




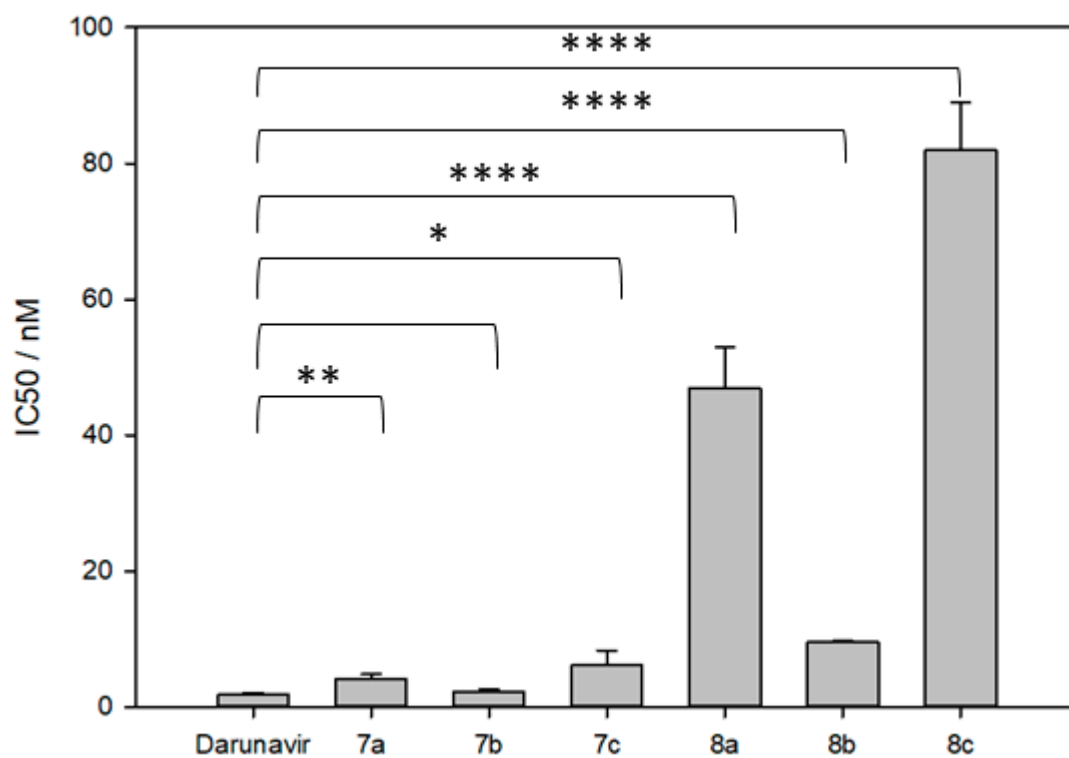




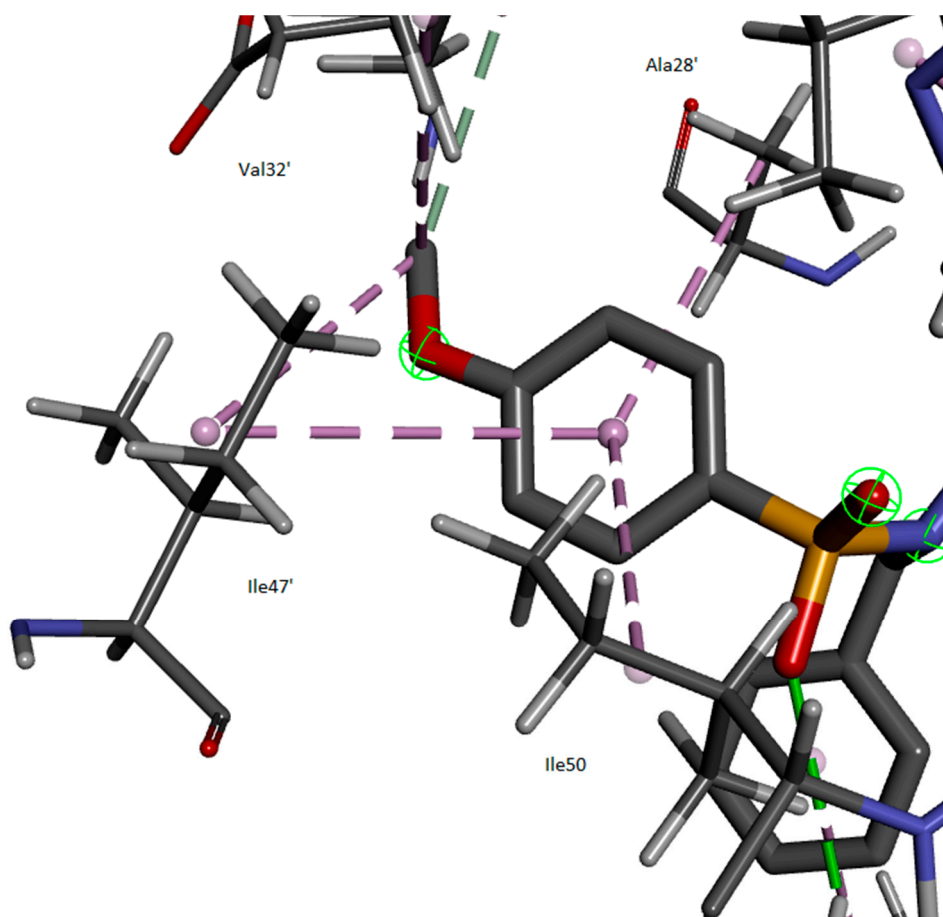




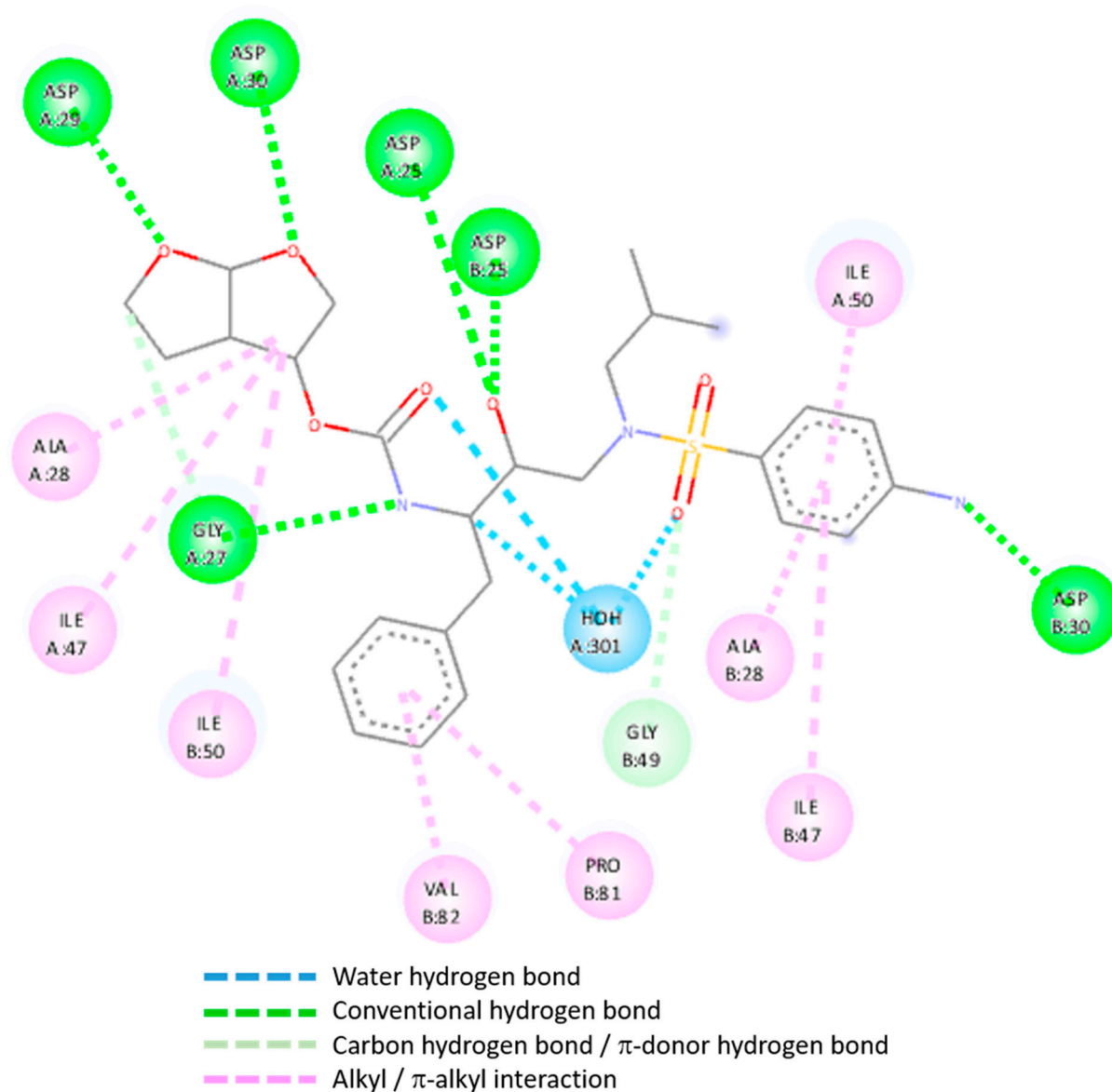
Supplementary Figure S1. concentration – response curves for the inhibition of the protease with all the inhibitors.



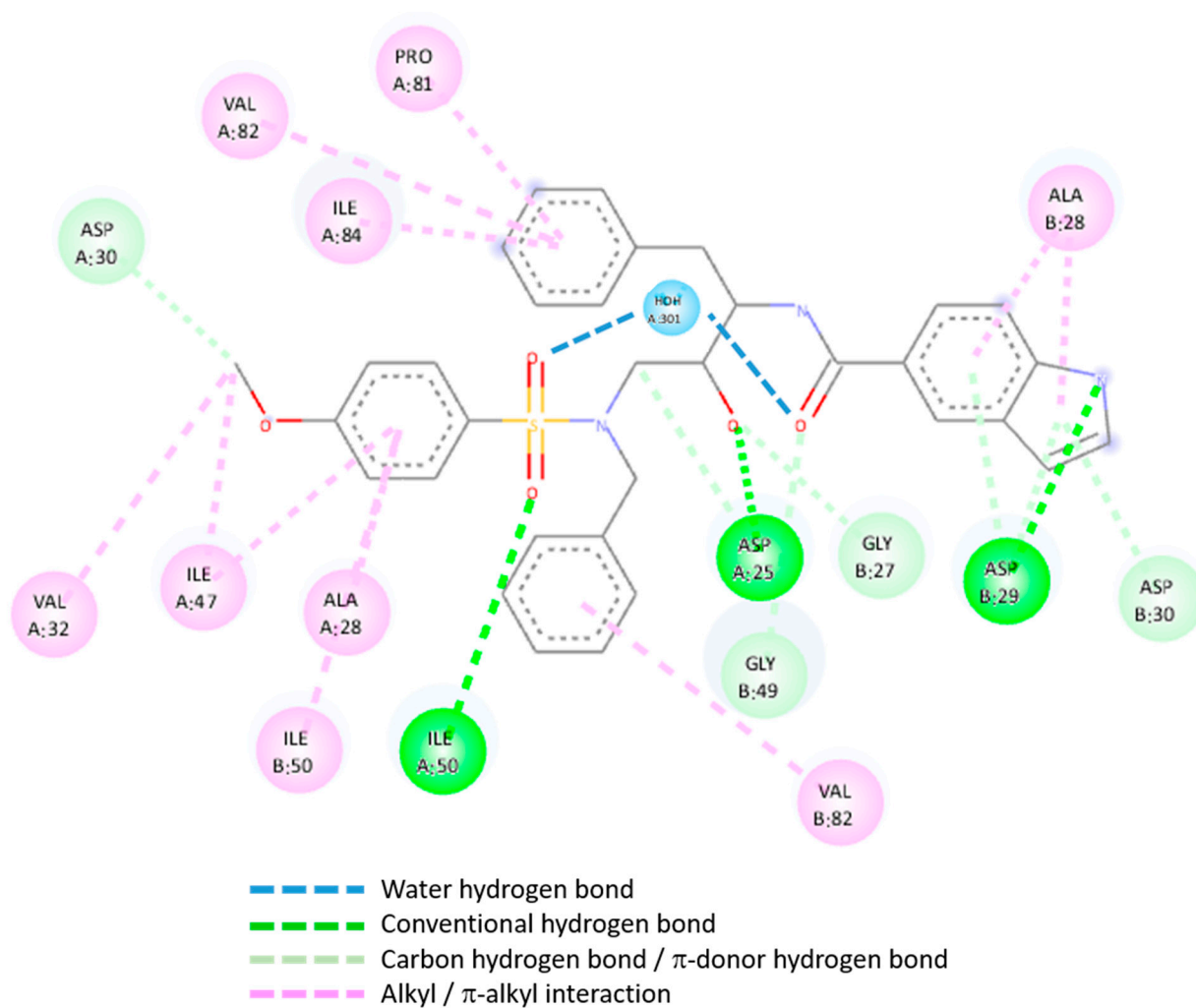
Supplementary Figure S2. statistical comparison of the measured IC₅₀ with respect to darunavir.
 *: $p < 0.01$; **: $p < 0.001$; ****: $p < 0.00001$.



Supplementary figure S3: interactions of the 4-methoxyphenyl group at P2' in the model structure of the complex of compound **9b** with the protease.



Supplementary figure S4: map of the interactions of Darunavir with the protease.



Supplementary figure S5: map of the interactions of compound **9b** with the protease.