

# In-Situ Metabolic Profiling of Different Kinds of *Rheum palmatum* L. by Laser Desorption–Dielectric Barrier Discharge Ionization Mass Spectrometry Imaging

Xue Xiao <sup>1,2</sup>, Xiaokang Guan <sup>3</sup>, Zhouyi Xu <sup>4,\*</sup> and Qiao Lu <sup>1,2,\*</sup>

<sup>1</sup> Department of Laboratory Medicine, Taihe Hospital, Hubei University of Medicine, Shiyan 442000, China; xiaoxue@hbm.u.edu.cn

<sup>2</sup> Hubei Key Laboratory of Wudang Local Chinese Medicine Research, Hubei University of Medicine, Shiyan 442000, China

<sup>3</sup> Discipline of Intelligent Instruments and Equipment, Xiamen University, Xiamen 361005, China; 20520220156671@stu.xmu.edu.cn

<sup>4</sup> Pen-Tung Sah Institute of Micro-Nano Science & Technology, Xiamen University, Xiamen 361005, China

\* Correspondence: zhouyixu@xmu.edu.cn (Z.X.); qiaolu@hbm.u.edu.cn (Q.L.)

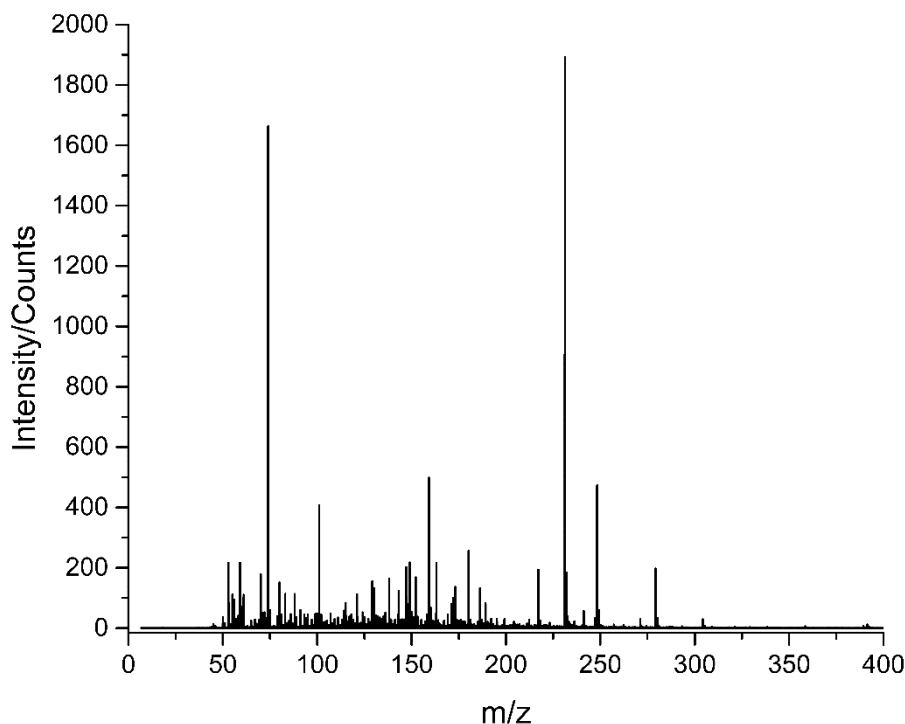


Figure S1. The whole mass spectrum of *Rheum Palmatum* L. (Plant A) obtained by laser desorption–dielectric barrier discharge ionization mass spectrometry.